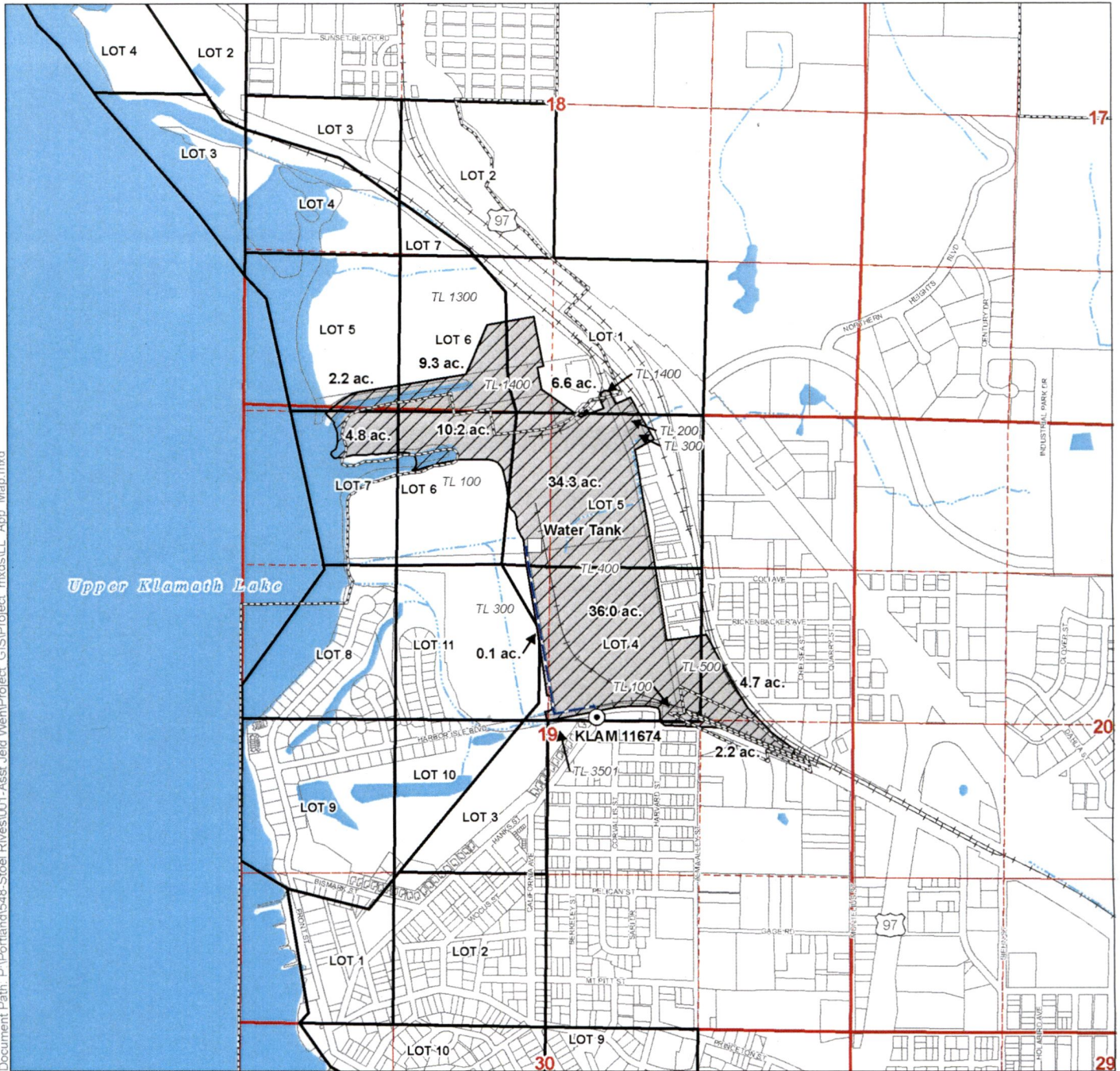


Application for Limited Water Use License in the Name of Jeld-Wen, Inc. Place of Use/Point of Appropriation Map

Township 38 South, Range 9 East (W.M.)



Document Path: P:\Portland\548-Stoel Rives\Project_GIS\Project_mxd\11_App_Map.mxd

LEGEND

- Place of Use (POU)
- Point of Appropriation (POA)
- Water Tank
- Water Conveyance Pipeline
- Tax Lots
- Government Lots
- Railroads
- Watercourses
- Waterbodies

Disclaimer

This map was prepared for the purpose of identifying the location of a water right only and it is not intended to provide legal dimensions or location of property ownership lines.

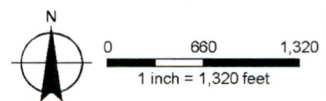
Map Notes

Date: July 1, 2014
Data Sources: Jeld Wen, OWRD, US BLM, USGS, ESRI
Prepared By: GSI Water Solutions, Inc.

POA LOCATION DESCRIPTION

KLAM 11674
Located 30 feet North and 2,215 feet West from the E1/4 corner of Section 19, Township 38 South, Range 9 East (W.M.)

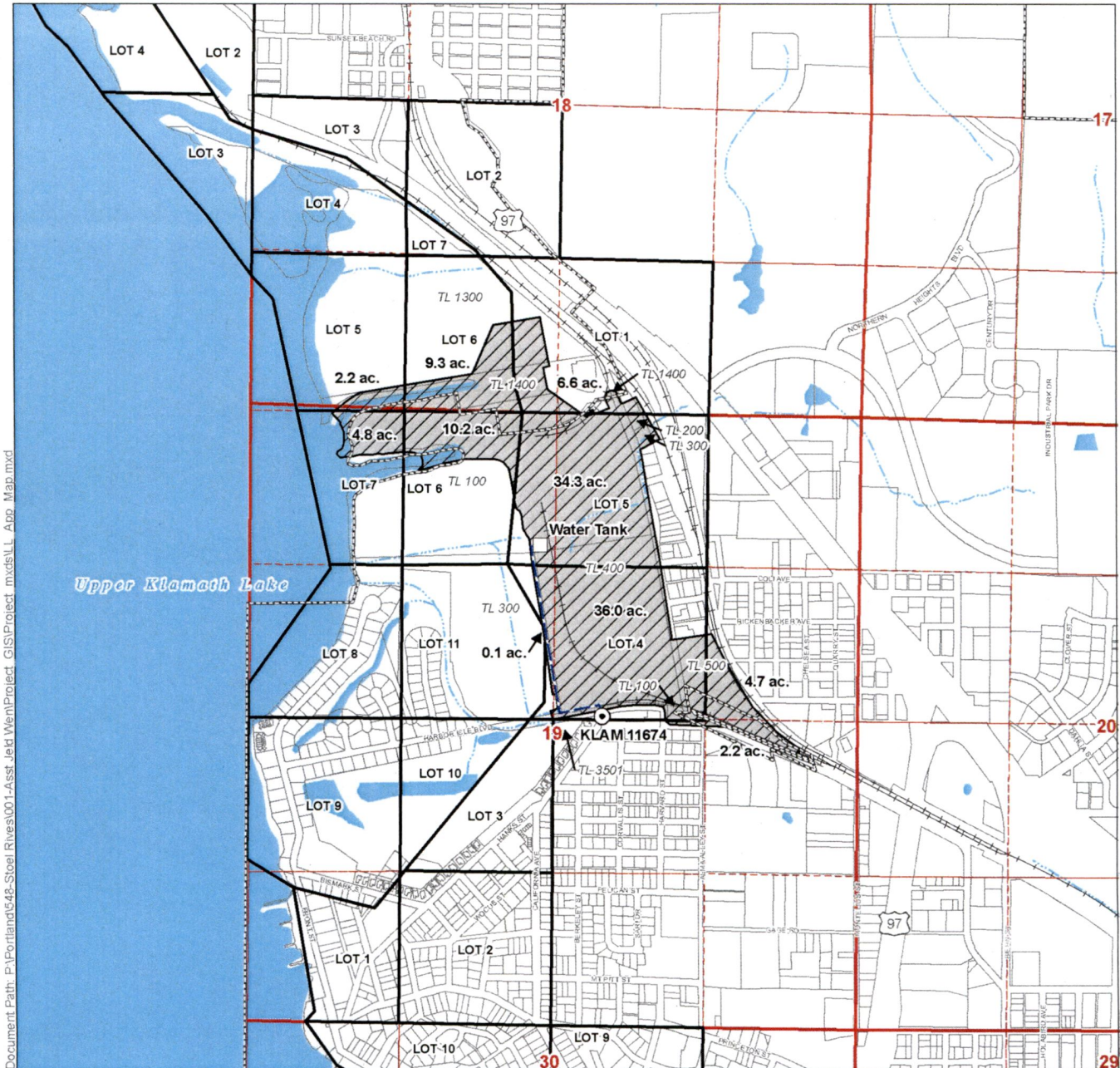
RECEIVED
MAY 24 2019
OWRD



22-1784

Application for Limited Water Use License in the Name of Jeld-Wen, Inc. Place of Use/Point of Appropriation Map

Township 38 South, Range 9 East (W.M.)



Document Path: P:\Portland\648-Stoel Rives\001-Assst Jeld Wen\Project_GIS\Project_mxd\LL_App_Map.mxd

LEGEND

- Place of Use (POU)
- Point of Appropriation (POA)
- Water Tank
- Water Conveyance Pipeline
- Tax Lots
- Government Lots
- Railroads
- Watercourses
- Waterbodies

POA LOCATION DESCRIPTION

KLAM 11674
Located 30 feet North and 2,215 feet West from the E1/4 corner of Section 19, Township 38 South, Range 9 East (W.M.)

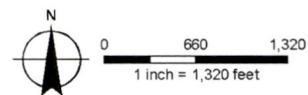
Disclaimer

This map was prepared for the purpose of identifying the location of a water right only and it is not intended to provide legal dimensions or location of property ownership lines.

Map Notes

Date: July 1, 2014
Data Sources: Jeld Wen, OWRD, US BLM, USGS, ESRI
Prepared By: GSI Water Solutions, Inc.

RECEIVED
MAY 24 2019
OWRD



LL-1784