

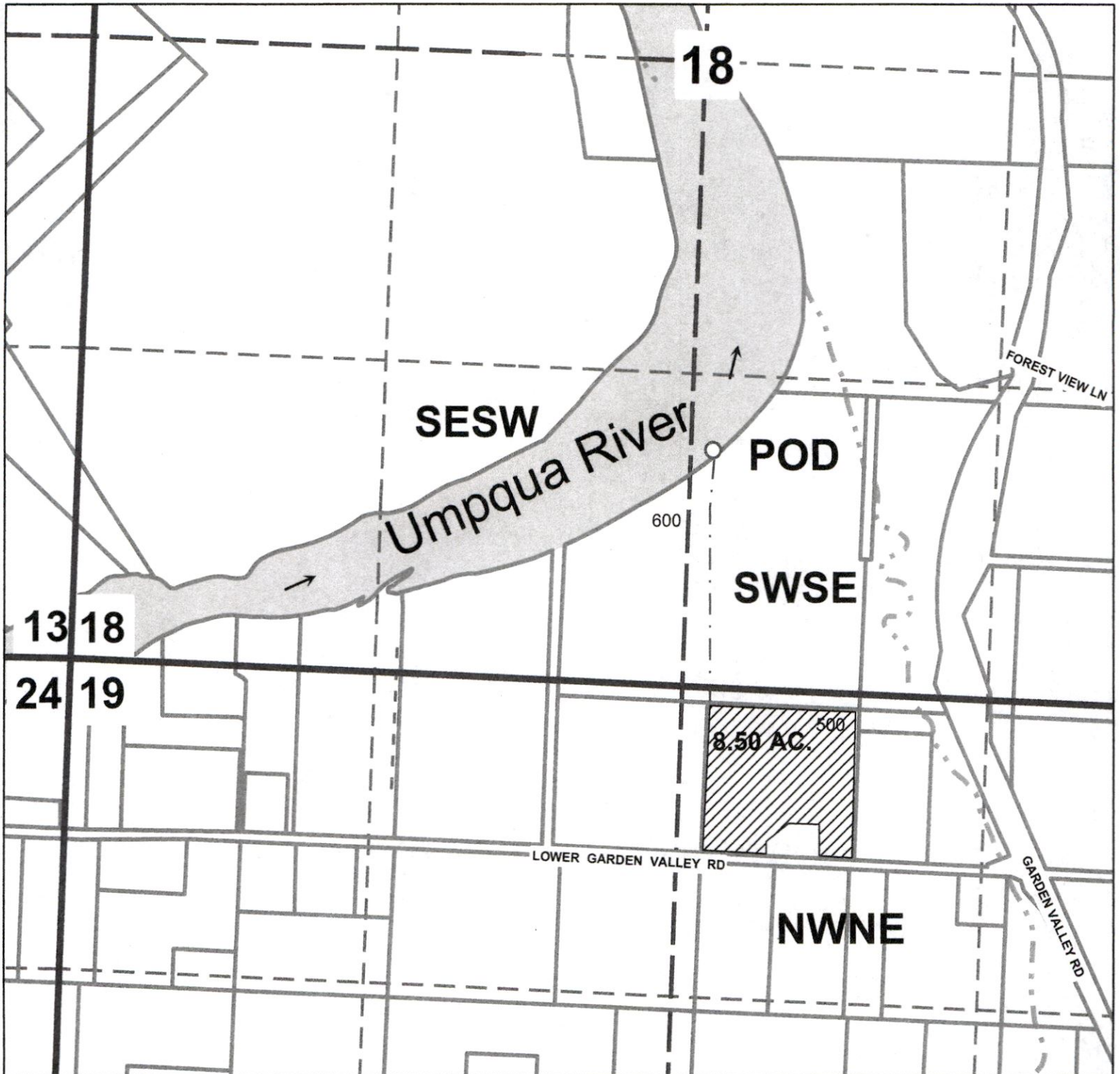


**Application Map**  
**Erleen and J Simms**  
**NE 1/4 SEC.19 T.26S. R.6W. WM**  
**Douglas County**  
**Scale: 1"= 600'**

RECEIVED

JUN 06 2019

OWRD

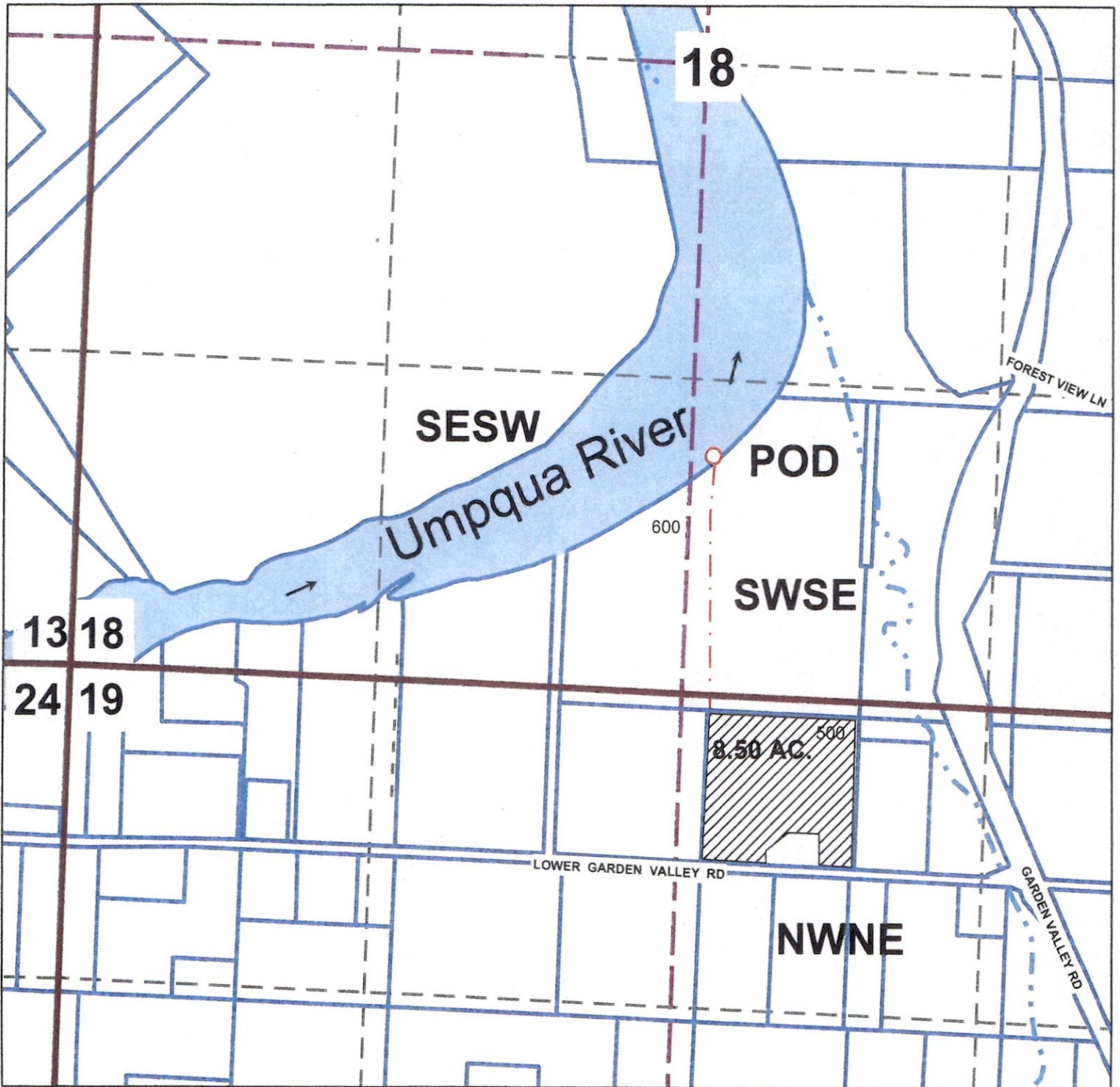


**Point of Diversion is 975 ft. North and 2750 ft. East of the  
South West quarter corner of Section 18**



**Application Map**  
**Erleen and J Simms**  
**NE 1/4 SEC.19 T.26S. R.6W. WM**  
**Douglas County**  
**Scale: 1"= 600'**

RECEIVED  
JUN 06 2019  
OWRD



**Point of Diversion is 975 ft. North and 2750 ft. East of the South West quarter corner of Section 18**

5-88700

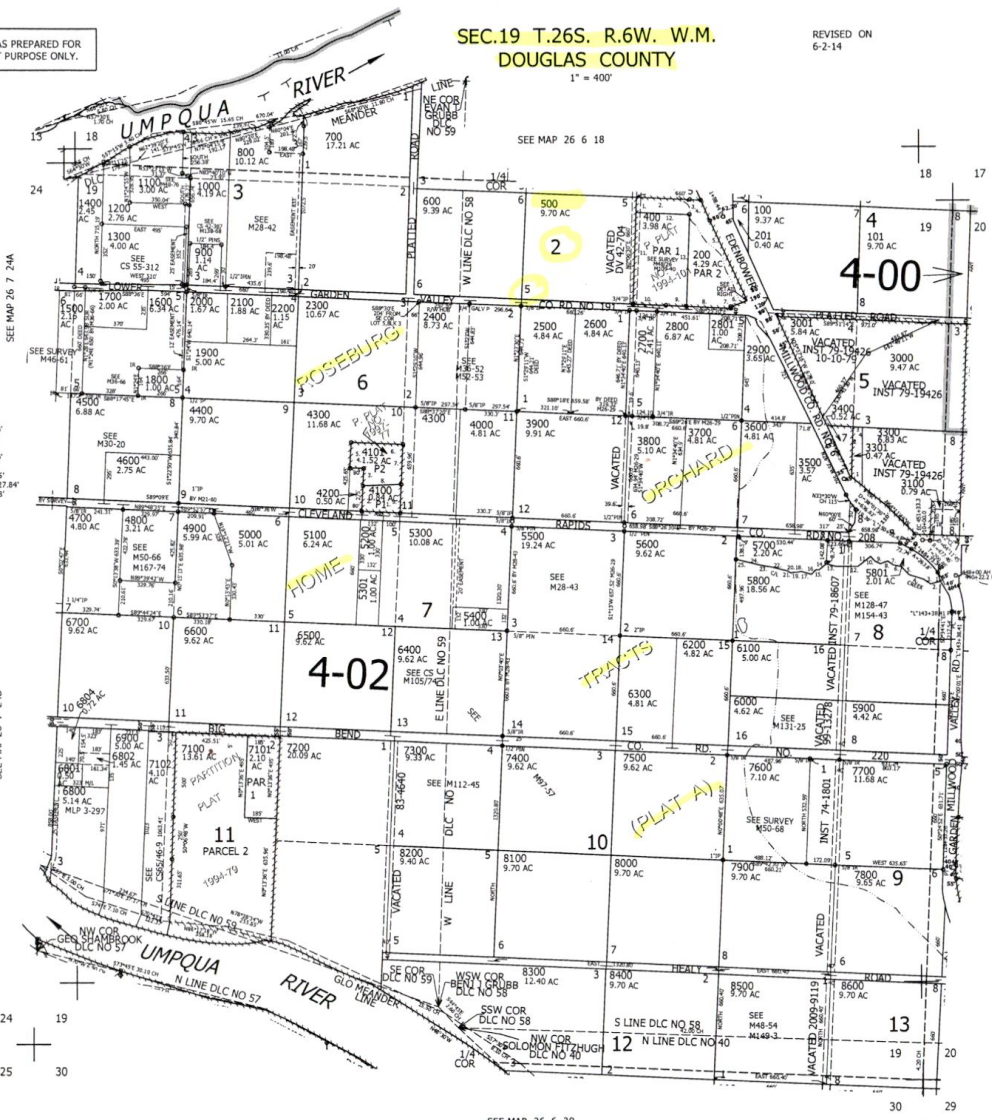
THIS MAP WAS PREPARED FOR ASSESSMENT PURPOSE ONLY.

SEC. 19 T. 26S. R. 6W. W.M. DOUGLAS COUNTY

REVISED ON 6-2-14

26 6 19

1" = 400'



- PP 1997-77
1. S88°36'E 227'
  2. N1°24'E 153.66'
  3. N1°24'E 97.26'
  4. N88°36'W 80'
  5. N1°24'E 153.14'
  6. N88°36'W 307'
  7. S1°24'W 229.15'
  8. N88°32'03"E 227.84'
  9. S1°24'W 171.96'

SEE MAP 26 7 24A

SEE MAP 26 7 24D

SEE MAP 26 6 18

SEE MAP 26 6 30

CANCELLED NO'S  
3200 S101 7000  
5803 6805 7103  
300 S701 5702  
4801

- PP 1994-101
1. S0°06'48"W 90.85'
  2. S89°55'55"W 212.85'
  3. S89°55'55"W 64.89'
  4. N25°18'35"W 134.23'
  5. N04°18'35"W 523.52'
  6. N63°18'04"E 109.85'
  7. N04°18'35"W 53.98'
  8. EAST 259.72'
  9. EAST 120.87'
  10. EAST 192.14'
  11. S0°06'48"W 553.96'
  12. EAST 312.85'
  13. S0°06'41"W 553.96'

TAXLOT 3301

1. 80'
2. 300'
3. 60'
4. 350'

DETAIL PT TL 100 & PP 1994-101

APPROX. EAST LINE OF LOT 4 BLOCK 4 PLAT A (PLAT A)

1" = 20' (NO DIMENSIONS ON PLAT)

- TAXLOT 5800
- C.O. OF UNNAMED CREEK
1. S70°12'27"W 48.86'
  2. S70°12'27"W 48.86'
  3. N89°57'27"W 89.89'
  4. N89°57'27"W 89.89'
  5. N89°57'27"W 89.89'
  6. N89°57'27"W 89.89'
  7. N89°57'27"W 89.89'
  8. N89°57'27"W 89.89'
  9. N89°57'27"W 89.89'
  10. N89°57'27"W 89.89'
  11. S89°57'27"W 89.89'
  12. S89°57'27"W 89.89'
  13. N77°51'07"W 57.17'
  14. N89°57'27"W 89.89'
  15. S89°57'27"W 89.89'
  16. N89°57'27"W 89.89'
  17. N89°57'27"W 89.89'
  18. S89°57'27"W 89.89'
  19. N89°57'27"W 89.89'
  20. N89°57'27"W 89.89'
  21. N89°57'27"W 89.89'
  22. N89°57'27"W 89.89'
  23. N89°57'27"W 89.89'
  24. N89°57'27"W 89.89'
  25. N89°57'27"W 89.89'

SEE MAP 26 6 20

605,000

26 6 19

MJB 6-11-19