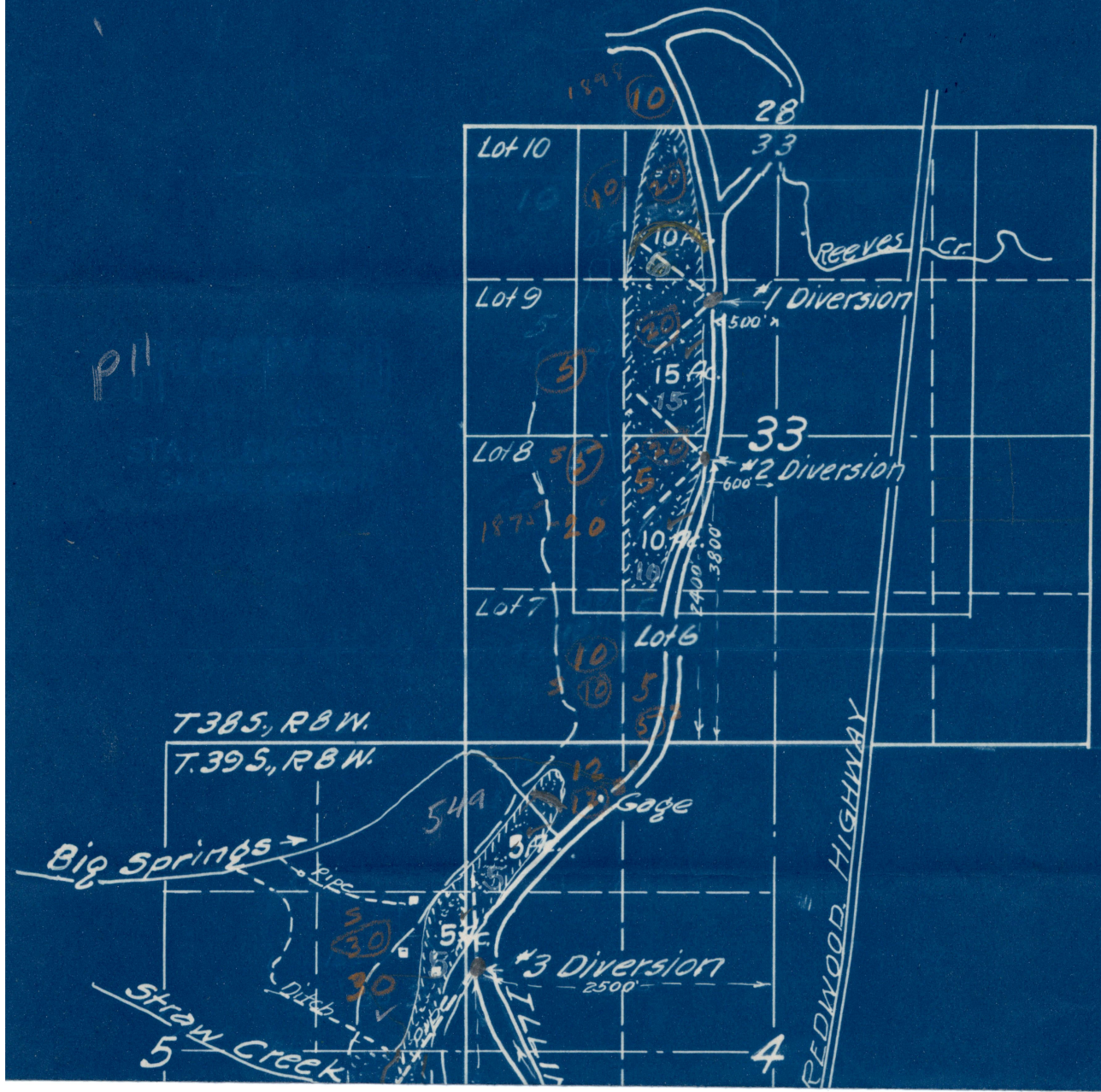


Townships 38-39 So. Range 8 W., W.M.





Note: $\frac{20}{20}$ = Adjudicated

-3 = P13262

17561 OK

15-49

Portable Pumping System

J. H. POMEROY

by G. A. Peterson

Application No. 17561

Permit No. 13262

AUG. 1938

Scale 4" = 1 Mile