

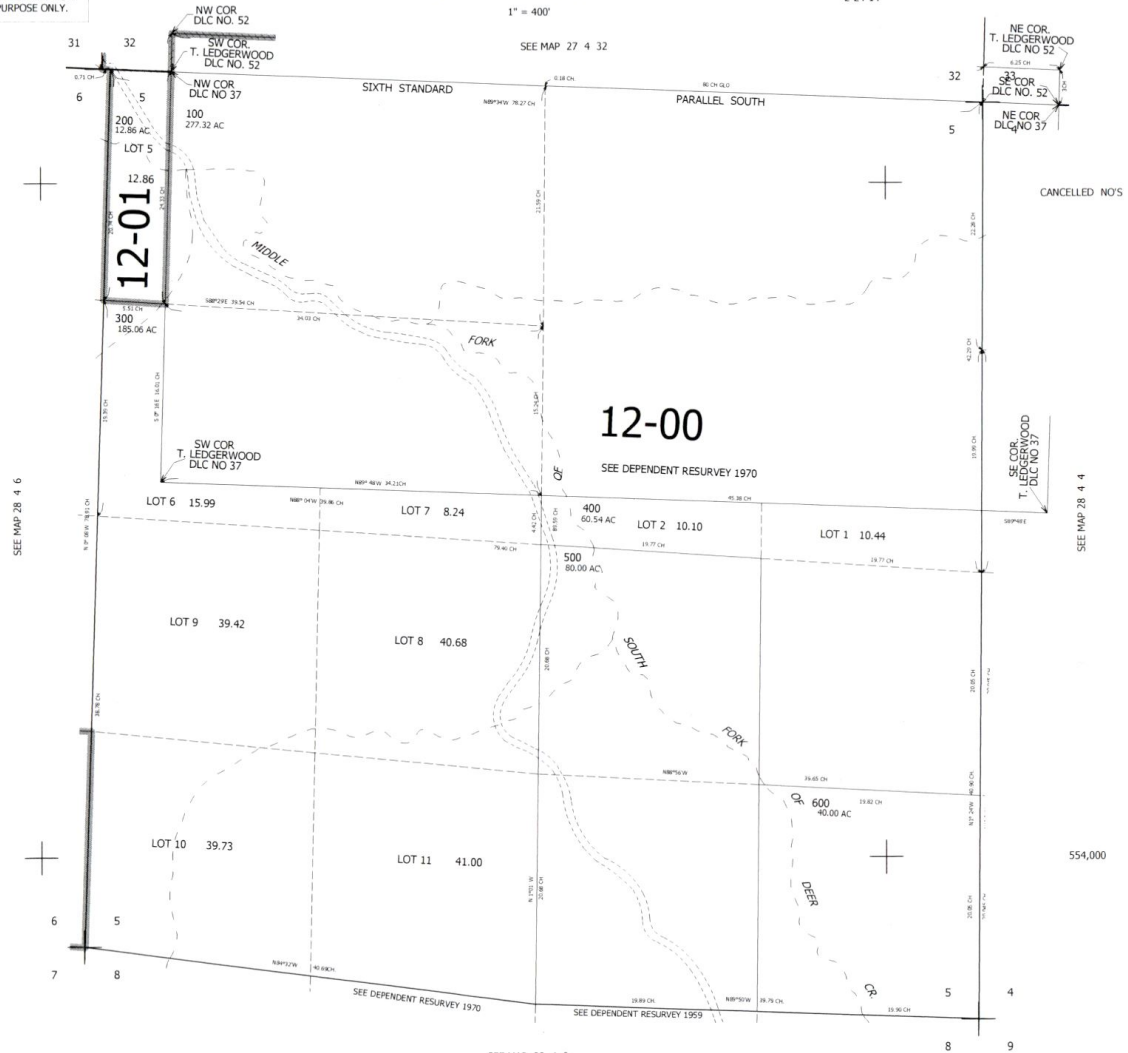
SEC.5 T.28S. R.4W. W.M.  
DOUGLAS COUNTY

1" = 400'

REVISED ON  
2-24-14

28 4 5

THIS MAP WAS PREPARED FOR  
ASSESSMENT PURPOSE ONLY.



CANCELLED NOS

SEE COR.  
T. LEDGERWOOD  
DLC NO 37

SEE MAP 28 4 4

554,000

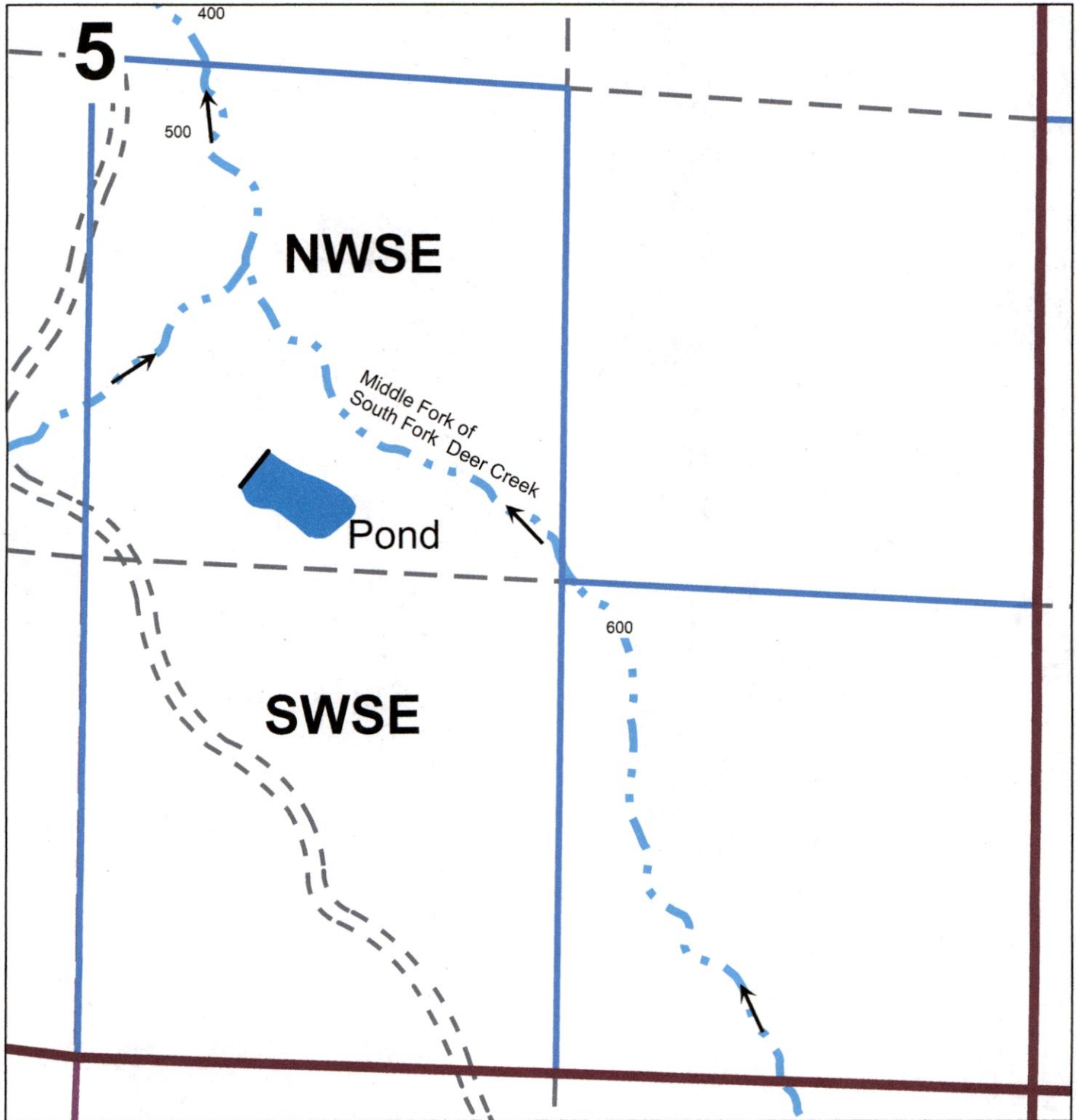
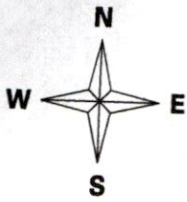
SEE MAP 28 4 8

4,204,000

28 4 5

Application Map  
T.28S. R.4W.  
David Trincherro  
Douglas County  
Scale: 1" = 400'

RECEIVED  
JUN 10 2019  
OWRD



Pond is located 1100 ft. South and 490 ft. East from  
the Center of Section 5.