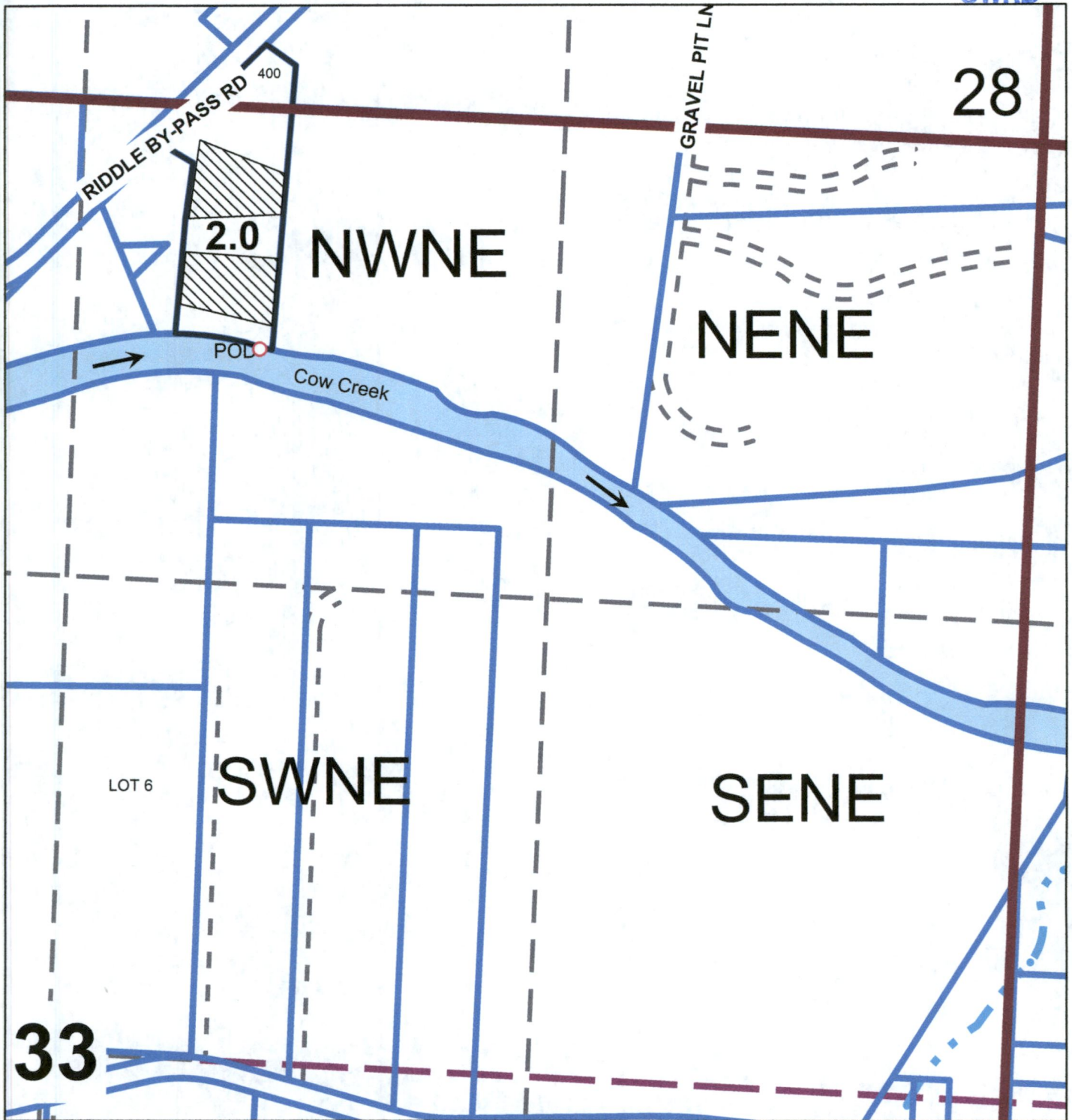




NE1/4 Sec.33 T.30S. R.6W. W.M.
Douglas County
1" = 400'

RECEIVED
JUN 17 2019
OWRD



Point of Diversion is 670 ft. South and 2165 ft. West
from the Northeast Corner of Section 33.

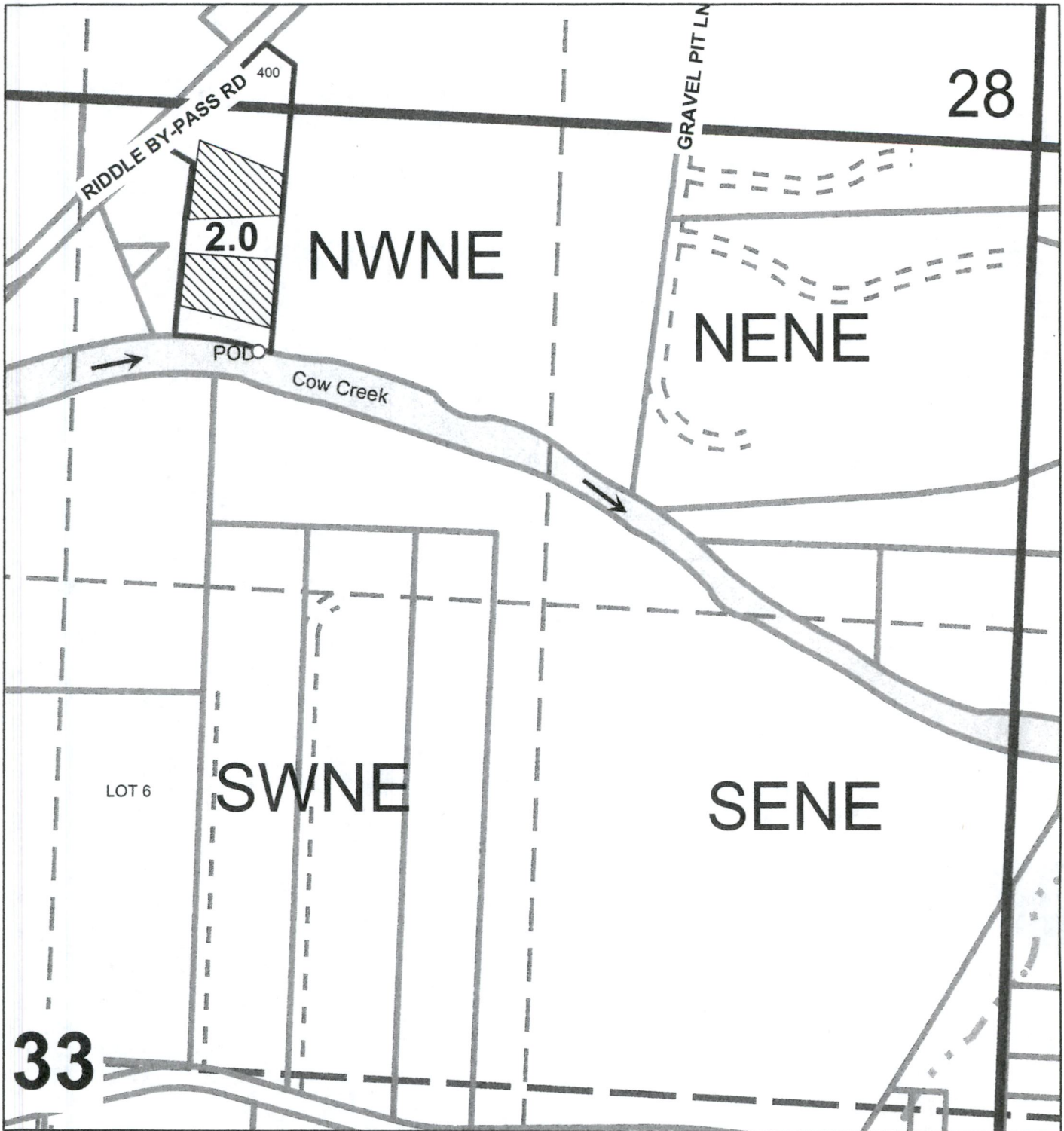
JUN 17 2019

OWRD

NE1/4 Sec.33 T.30S. R.6W. W.M.

Douglas County

1" = 400'



Point of Diversion is 670 ft. South and 2165 ft. West
from the Northeast Corner of Section 33.

5-88707