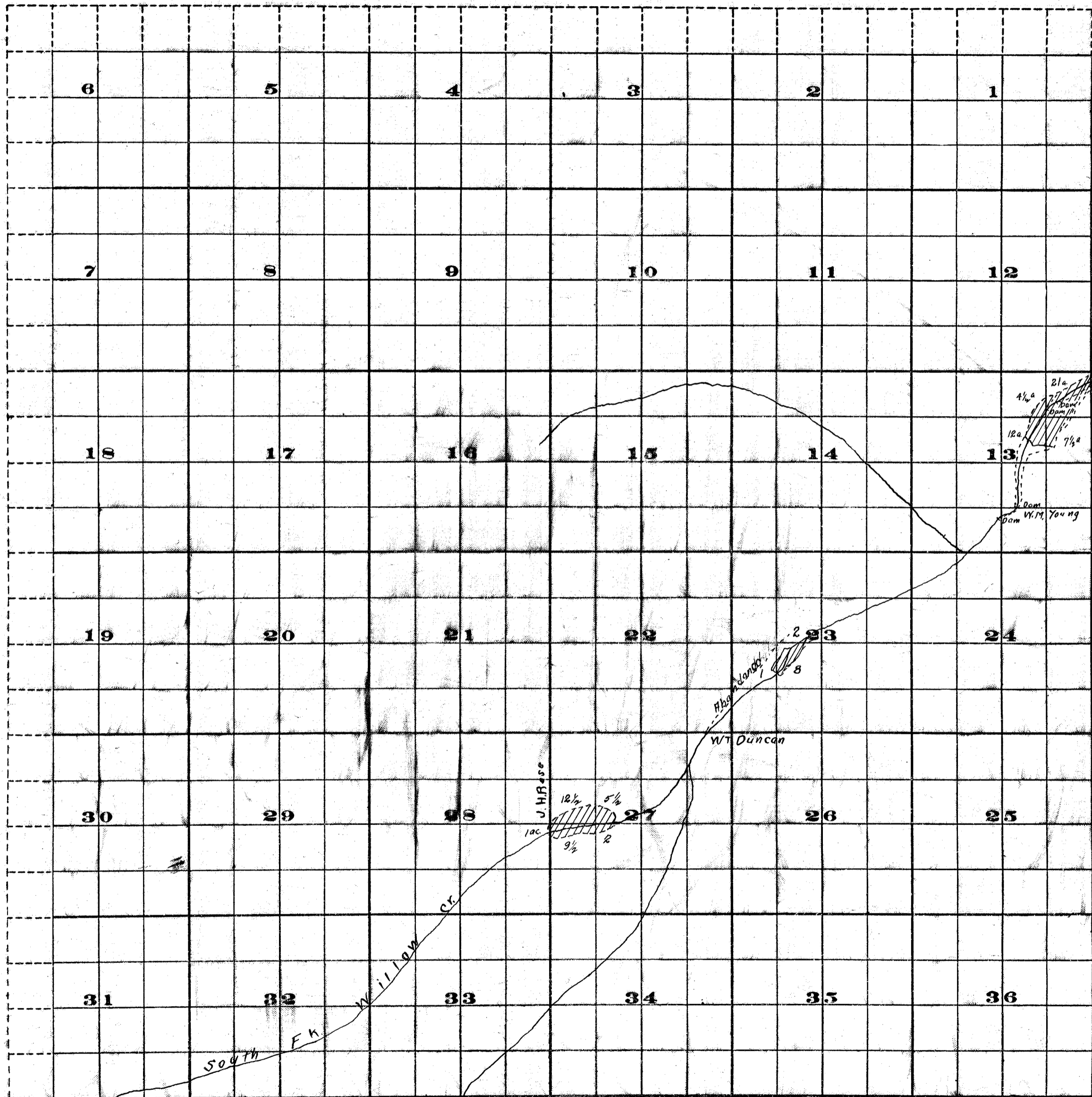


Township 15 S., Range 38 E. W.M.



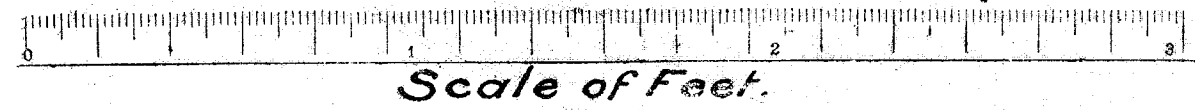
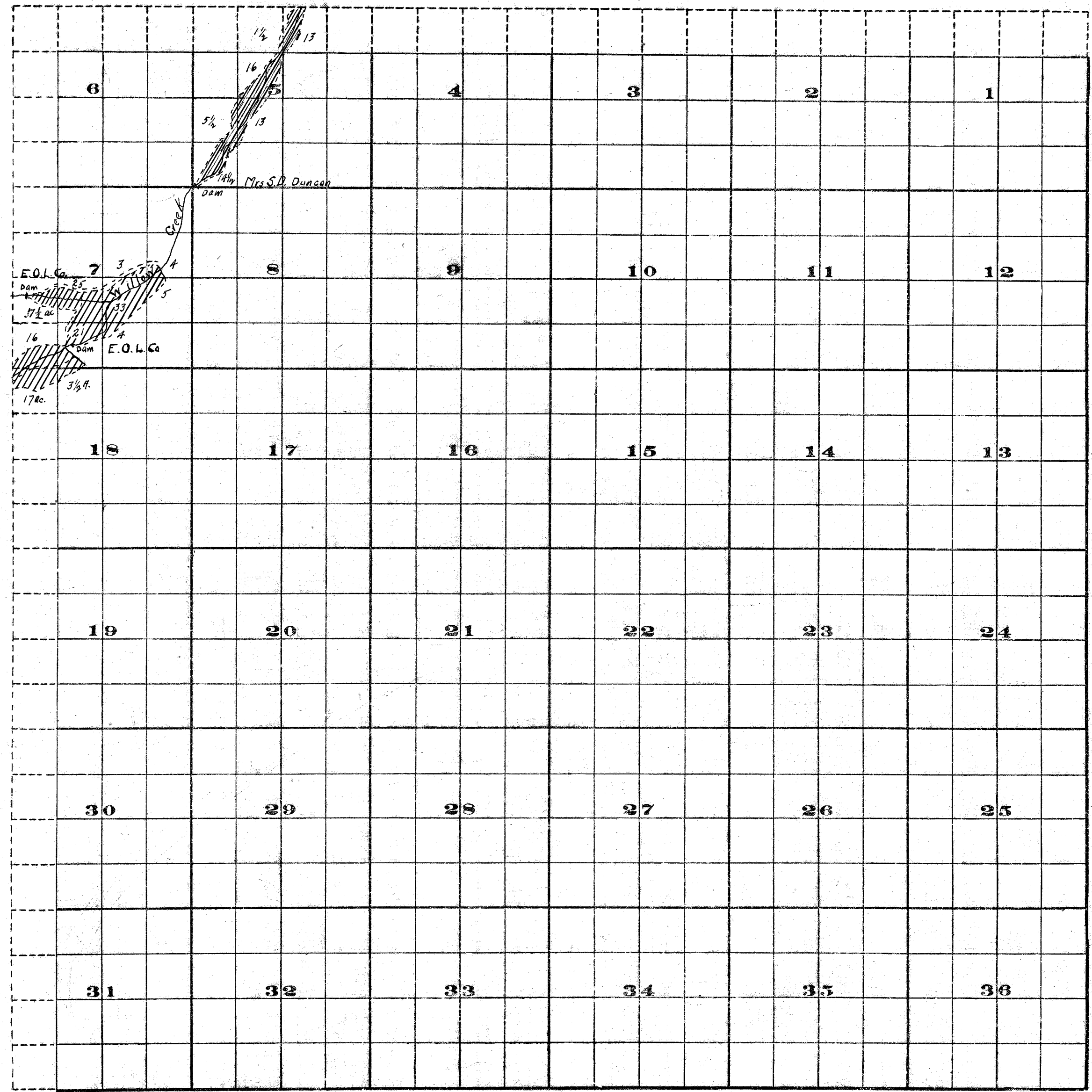
FROM OFFICE OF THE STATE ENGINEER, SALEM, OREGON  
Survey By Rhea Luper  
April, 1910.

John H. Lewis. State Eng.  
Examined Aug 24, 1910

Adjudication-Willow Creek- Malheur Co.

6d - 78.5 ac  
4 mi -

Township 15 S., Range 39 E. W.M.



FROM OFFICE OF THE STATE ENGINEER, SALEM, OREGON  
 Survey By Rhea Luper  
 March 1910.

John H. Lewis State Eng.  
 Examined Aug 24, 1910

Adjudication-Willow Creek-Malheur Co.,

*Ed - 202.5 ac.  
 7 mi.*