

5-88719

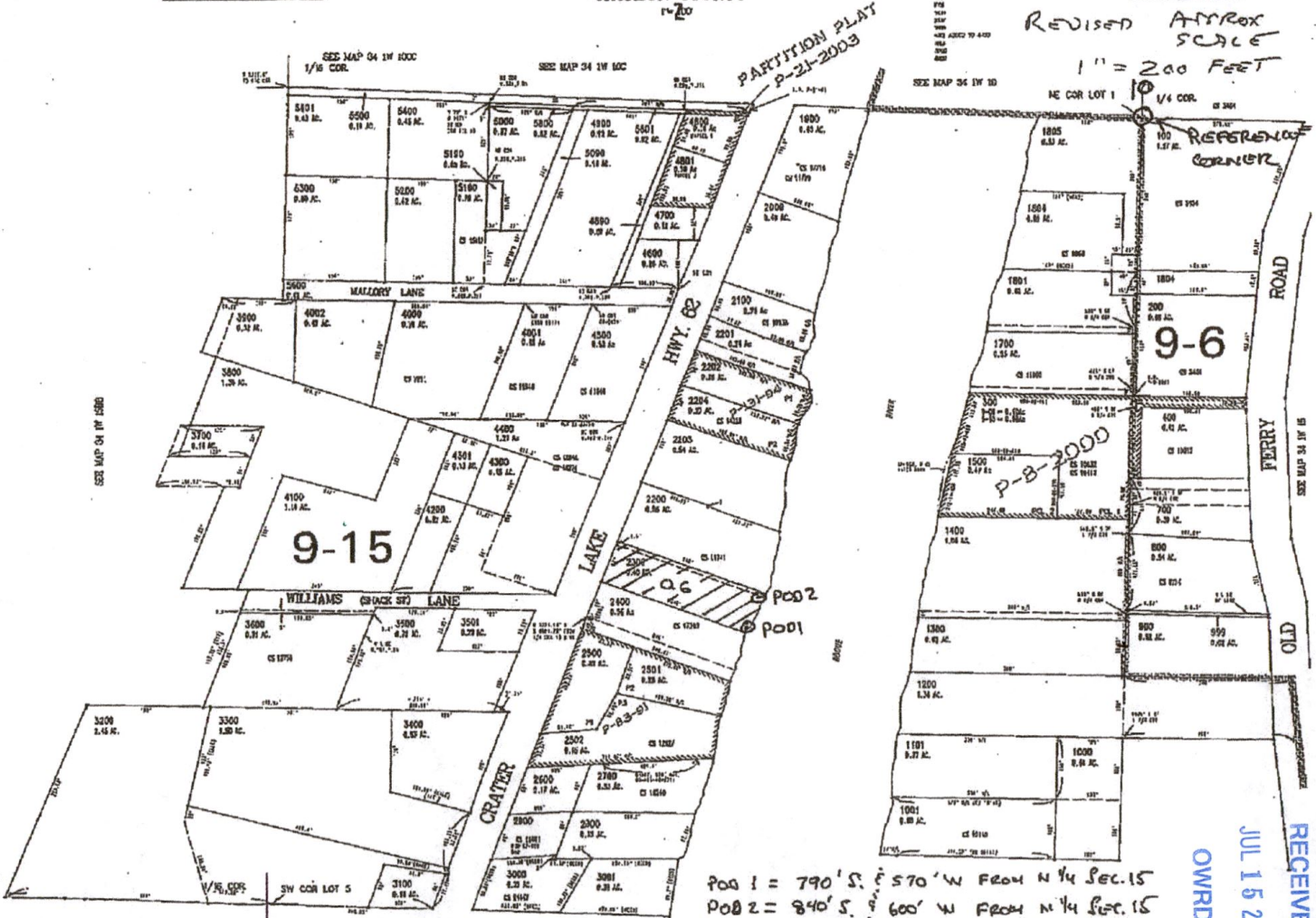
THIS MAP WAS PREPARED FOR ASSESSMENT PURPOSES ONLY



NE1/4 NW1/4 SEC15 T34S R1W. WM  
JACKSON COUNTY  
1-20

CANCELLED NO.  
THIS MAP IS NOT VALID  
UNLESS REFERRED TO THIS

Work Copy  
34 1W 15BA  
SHADY COVE  
REVISED APPROX  
SCALE  
1" = 200 FEET



POB 1 = 790' S. 570' W FROM N 1/4 SEC. 15  
POB 2 = 840' S. 600' W FROM N 1/4 SEC. 15

RECEIVED  
JUL 15 2019  
OWRD

3085

5-88719

SEP 12 06 02:40P

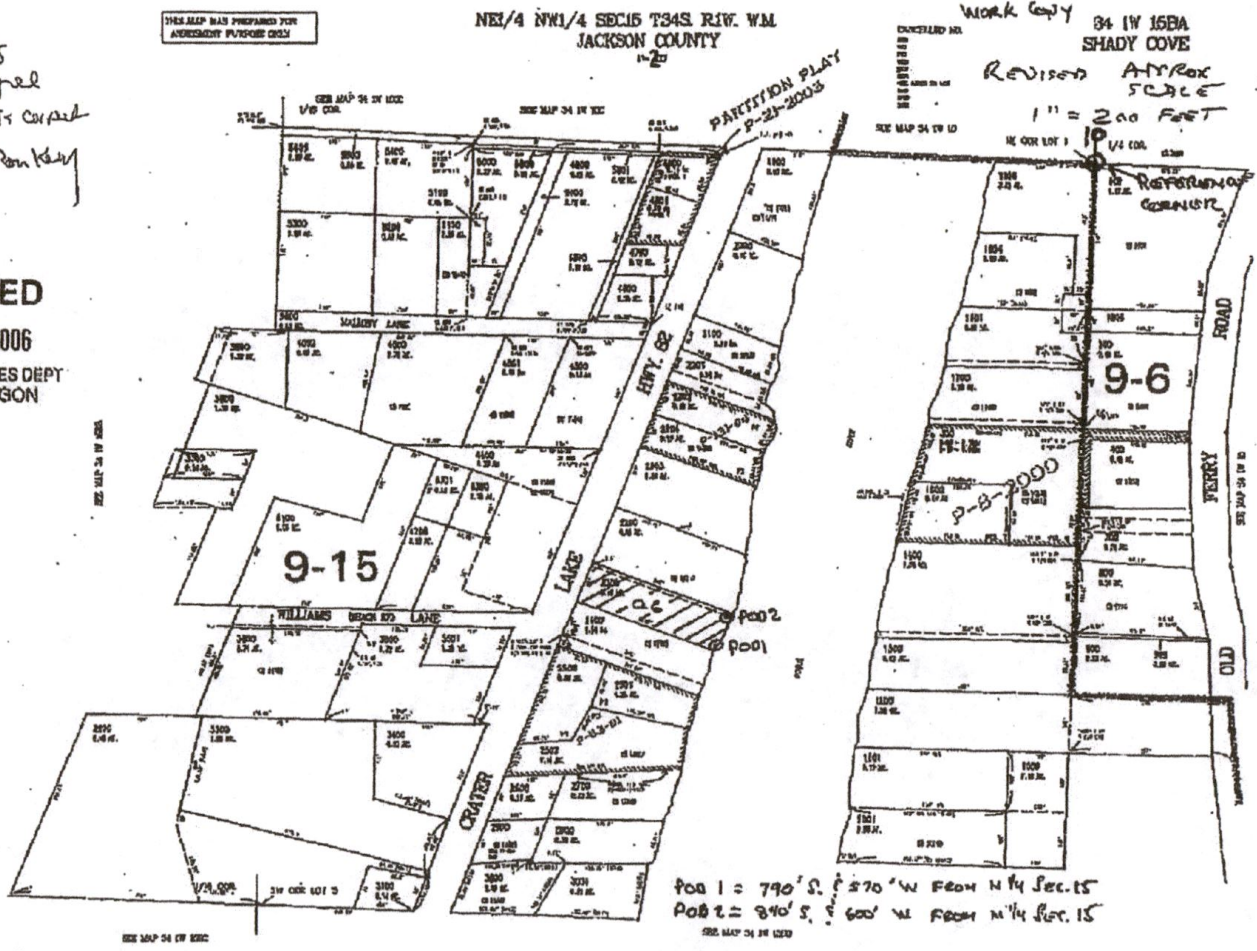
OFFICIAL BALL CHARGE 3/00/4/10 4:00 V. FRI PAUL 3/000 FAX DRIVE

P.1

785

16

RECEIVED  
JUL 15 2019  
OWRD



POB 1 = 790' S. 270' W FROM N 1/4 SEC. 15  
 POB 2 = 340' S. 600' W FROM N 1/4 SEC. 15

Yes  
 In good  
 this is correct  
 Penkey

RECEIVED  
 SEP 12 2006  
 WATER RESOURCES DEPT  
 SALEM, OREGON

appno 5-86681 Permit no c-54376