

RECEIVED

JUL 24 2019

OWRD

RECEIVED

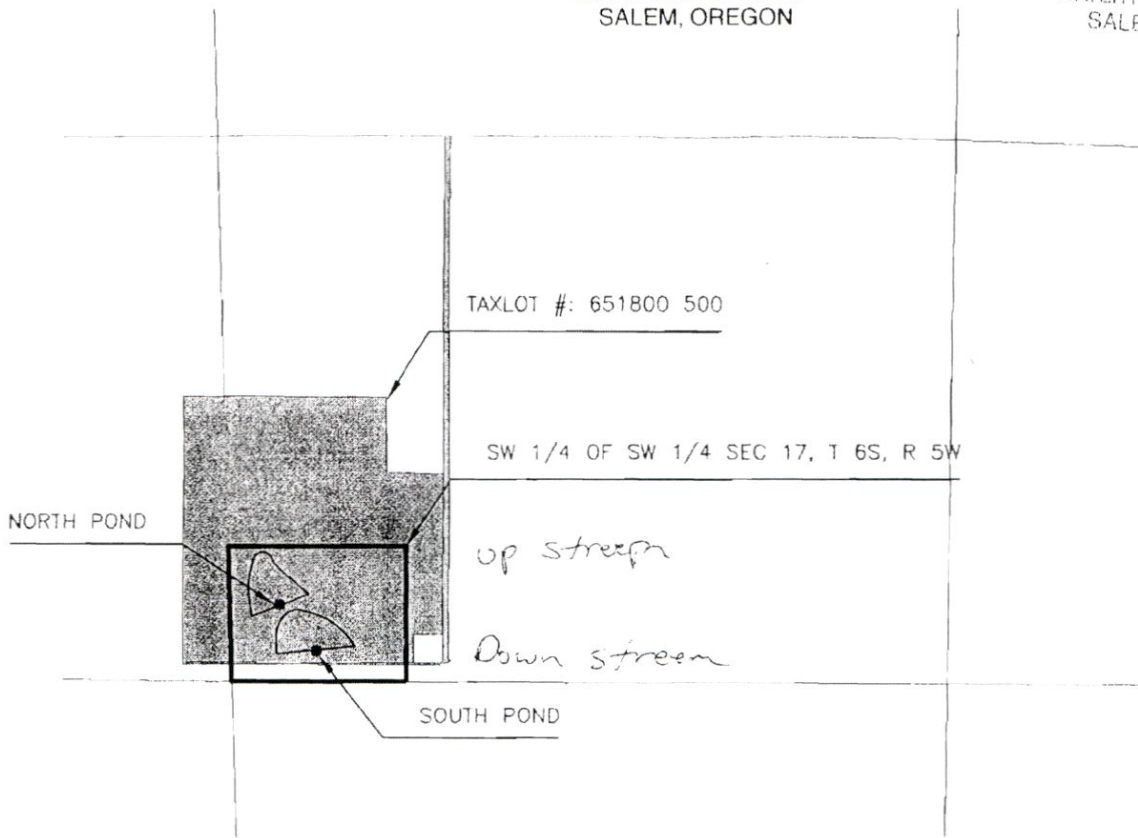
MAR 18 2008

WATER RESOURCES DEPT
SALEM, OREGON

RECEIVED

APR 20 2006

WATER RESOURCES DEPT
SALEM, OREGON



MAXSON - DUCK PONDS



SOUTH POND is 660 ft east and 260 ft north of SW corner of section 17, T 6S, R5W, WM
 NORTH POND is 370 ft east and 590 ft north of SW corner of section 17, T 6S, R5W, WM

CMS

4/06

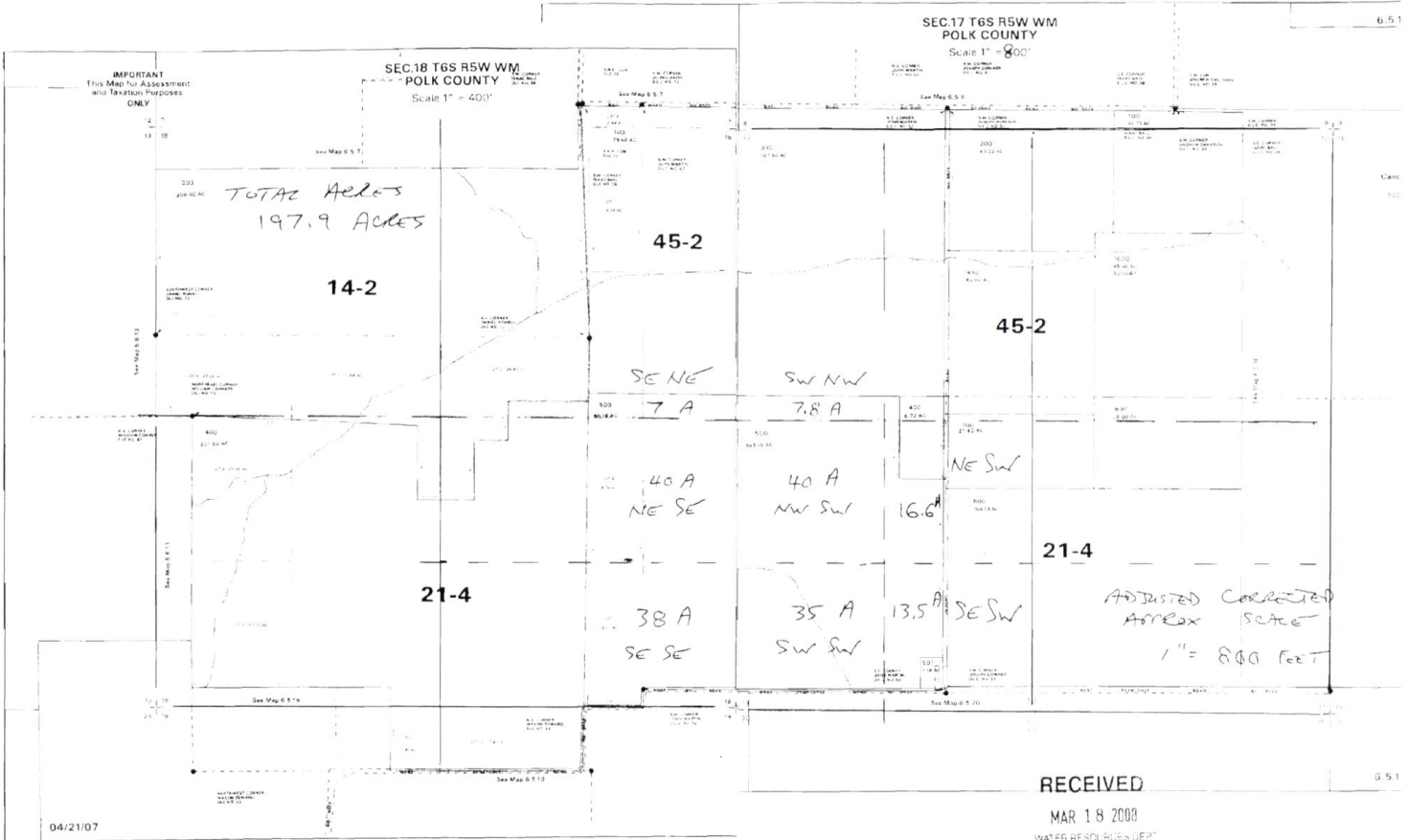
MAXSON DUCK PONDS - LOCATION MAP

POLK COUNTY, OREGON

U.S.D.A. NATURAL RESOURCES CONSERVATION SERVICE

~~app no R-86577 Permit no R-14297 App No 5-87129~~

5-88723



App No 5-87129

5-88723