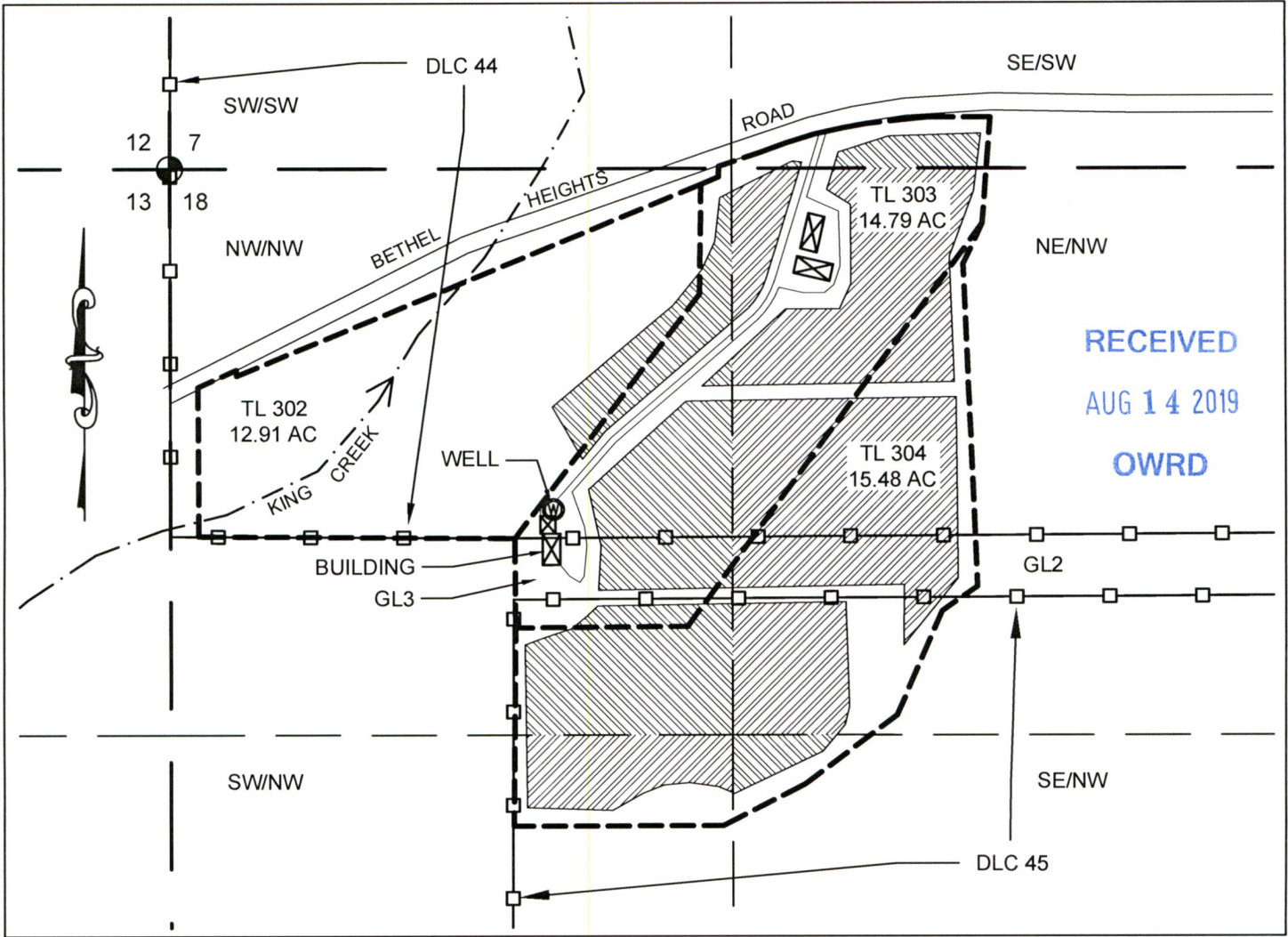
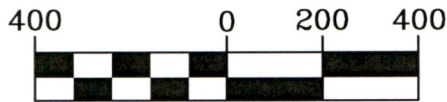


DOMAINE SERENE DEEP ROCK VINEYARD LIMITED LICENSE APPLICATION MAP

LOCATED: T.6S., R.3W., SEC 7+18, TAX LOTS 302, 303, 304, POLK COUNTY OR W.M.
STREET ADDRESS 3700 BETHEL HEIGHTS ROAD NW, SALEM, OR



RECEIVED
AUG 14 2019
OWRD



1 inch = 400 ft.

POD, WELL #1, IS LOCATED
895' EAST AND 795' SOUTH
OF THE NW CORNER OF
SECTION 18.



EXPIRES 12/31/19

STUNTZNER ENGINEERING
2318-B PACIFIC AVENUE
FOREST GROVE, OR 97116
503-357-5717

PROPOSED IRRIGATION BY QUARTER-QUARTER						
T	R	Sec	Q-Q	G lot	DLC	AC
6S	3W	7	SE/SW		44	0.55
6S	3W	18	NE/NW		44	8.57
6S	3W	18	NE/NW	2		1.48
6S	3W	18	NE/NW		45	2.02
6S	3W	18	NW/NW		44	3.56
6S	3W	18	NW/NW	3		0.86
6S	3W	18	NW/NW		45	3.16
6S	3W	18	SE/NW		45	0.44
6S	3W	18	SW/NW		45	1.63
TOTAL ACRES =						22.28

NOTE: THIS MAP IS PRODUCED TO
INDICATE THE LOCATION OF A WATER
RIGHT. IT IS NOT INTENDED TO
PROVIDE INFORMATION RELATIVE TO
THE LOCATION OF PROPERTY LINES.

JOB #: 319-003, REVISED 6-13-19
DRAWING NAME:
D.S. DEEP ROCK VINEYARD LIMITED
LICENSE APPLICATION MAP



LL-1799