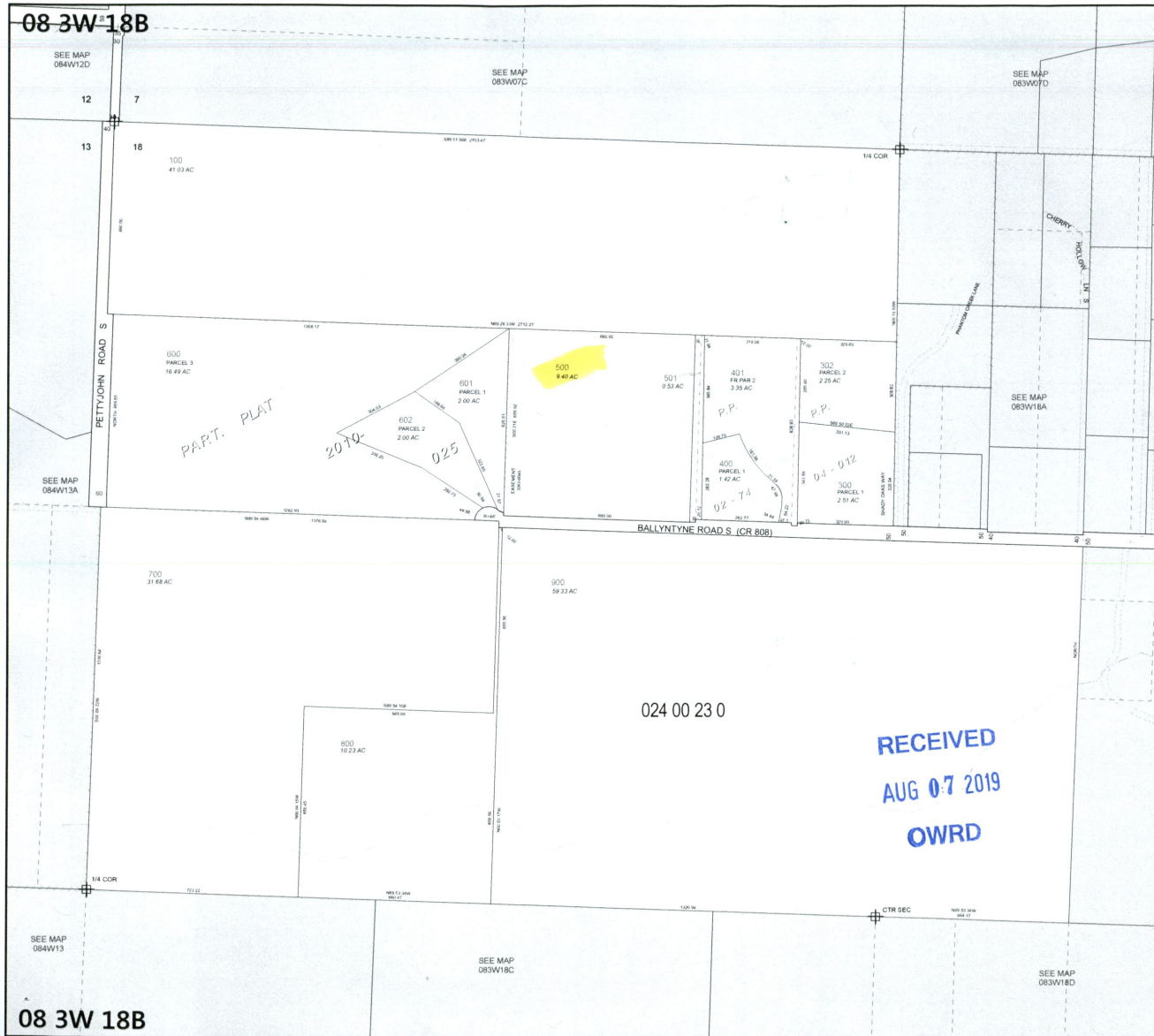


08 3W 18B

08 3W 18B



MARION COUNTY, OREGON
 NW1/4 SEC18 T8S R3W W.M.
 SCALE 1" = 200'

LEGEND

LINE TYPES	
Taxlot Boundary	Historical Boundary
Road Right-of-Way	Easement
Railroad Right-of-Way	Railroad Centerline
Private Road ROW	Taxcode Line
Subdivision/Plat Bndry	Map Boundary
Waterline - Taxlot Bndry	Waterline - Non Bndry

CORNER TYPES

1/16TH Section Cor.	1/4 Section Cor.
DLC Corner	Section Corner
	16.15
	21.22

NUMBERS
 Tax Code Number
000 00 00 0
 Acreage 0.25 AC All acres listed are Net Acres, excluding any portions of the taxlot within public ROWs.

NOTES
 Tick Marks: A tick mark in the road indicates that the labeled dimension extends into the public ROW

CANCELLED NUMBERS

200	
301	
700U1	
700U2	

RECEIVED
AUG 07 2019
OWRD

DISCLAIMER: THIS MAP WAS PREPARED FOR ASSESSMENT PURPOSES ONLY



FOR ADDITIONAL MAPS VISIT OUR WEBSITE AT www.co.marion.or.us

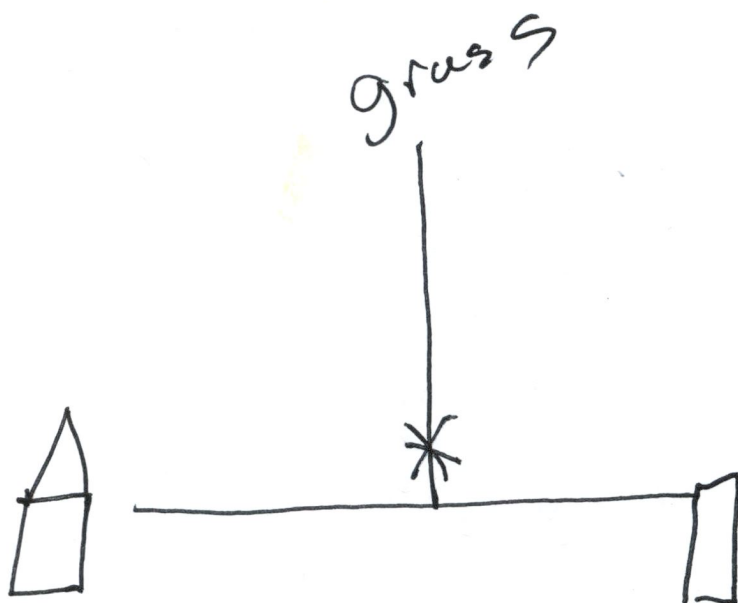
PLOT DATE: 1/24/2018

08 3W 18B

08 3W 18B

G-18854

\$ 2,560.⁰⁰



RECEIVED

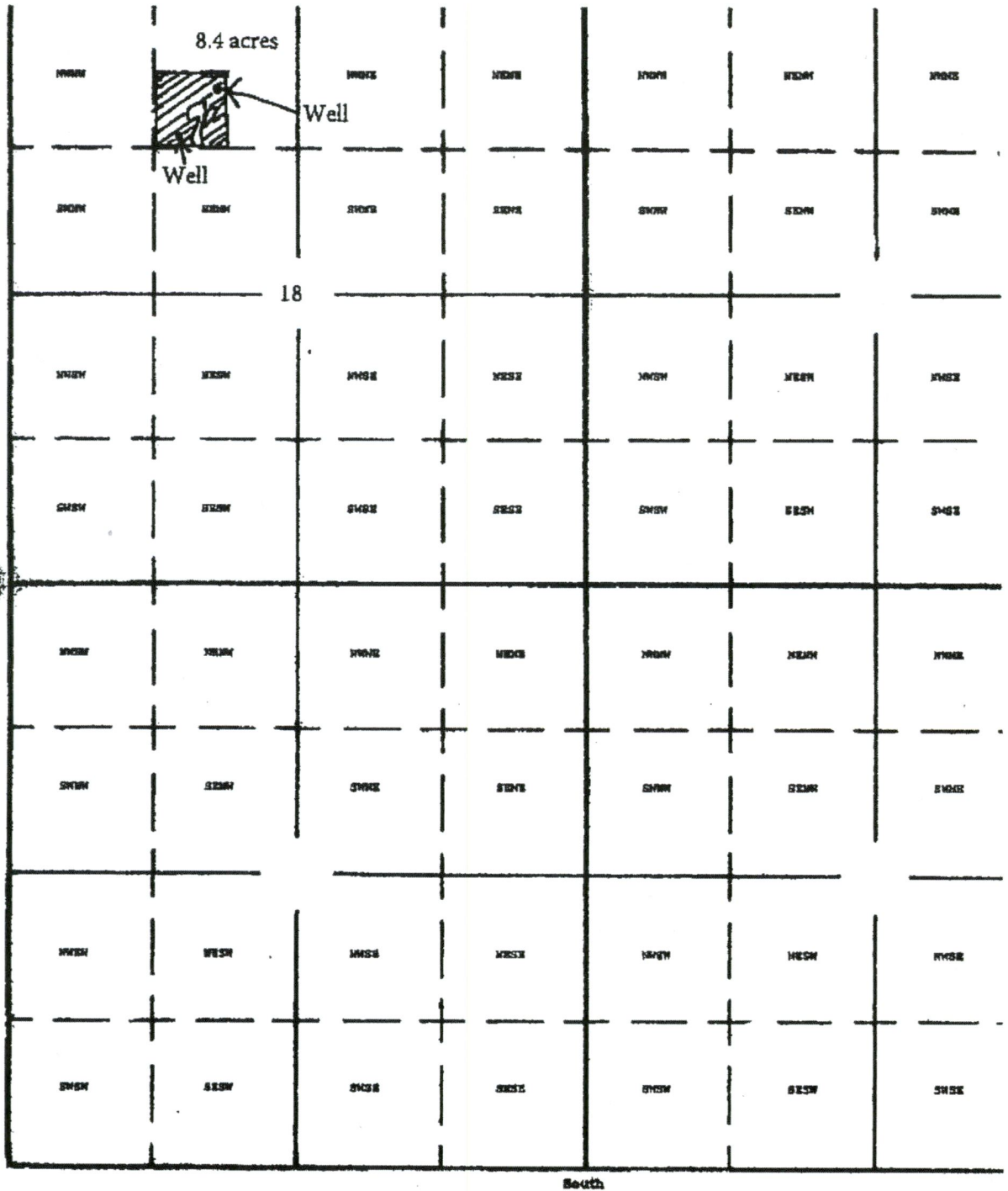
AUG 07 2019

OWRD

TOWNSHIP 8 SOUTH

RANGE 3 WEST

TAX LOT 500



RECEIVED
AUG 07 2019
OWRD

Well : 1250 South, 1540 East from NW Corner Section 18
Well : 780 South, 1890 East from NW Corner Section 18

[Signature]
8/5/2019

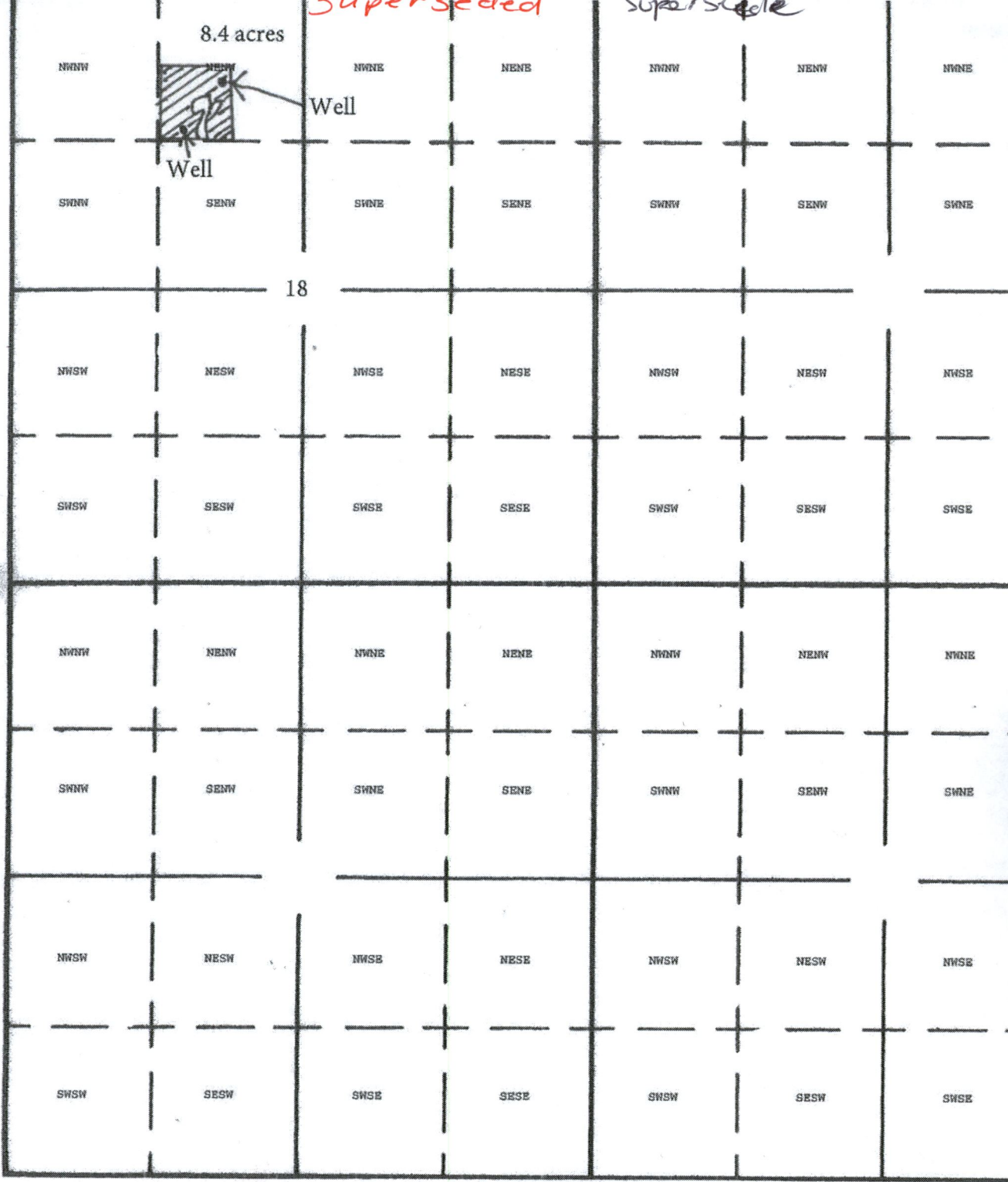
RECEIVED
AUG 13 2019
OWRD

G-18854

Superseded

Supersede

8.4 acres



RECEIVED
AUG 07 2019
OWRD

Well : 1250 South, 1540 East from NW Corner Section 18
Well : 780 South, 1890 East from NW Corner Section 18

[Signature]
8/15/2019

G-18854

