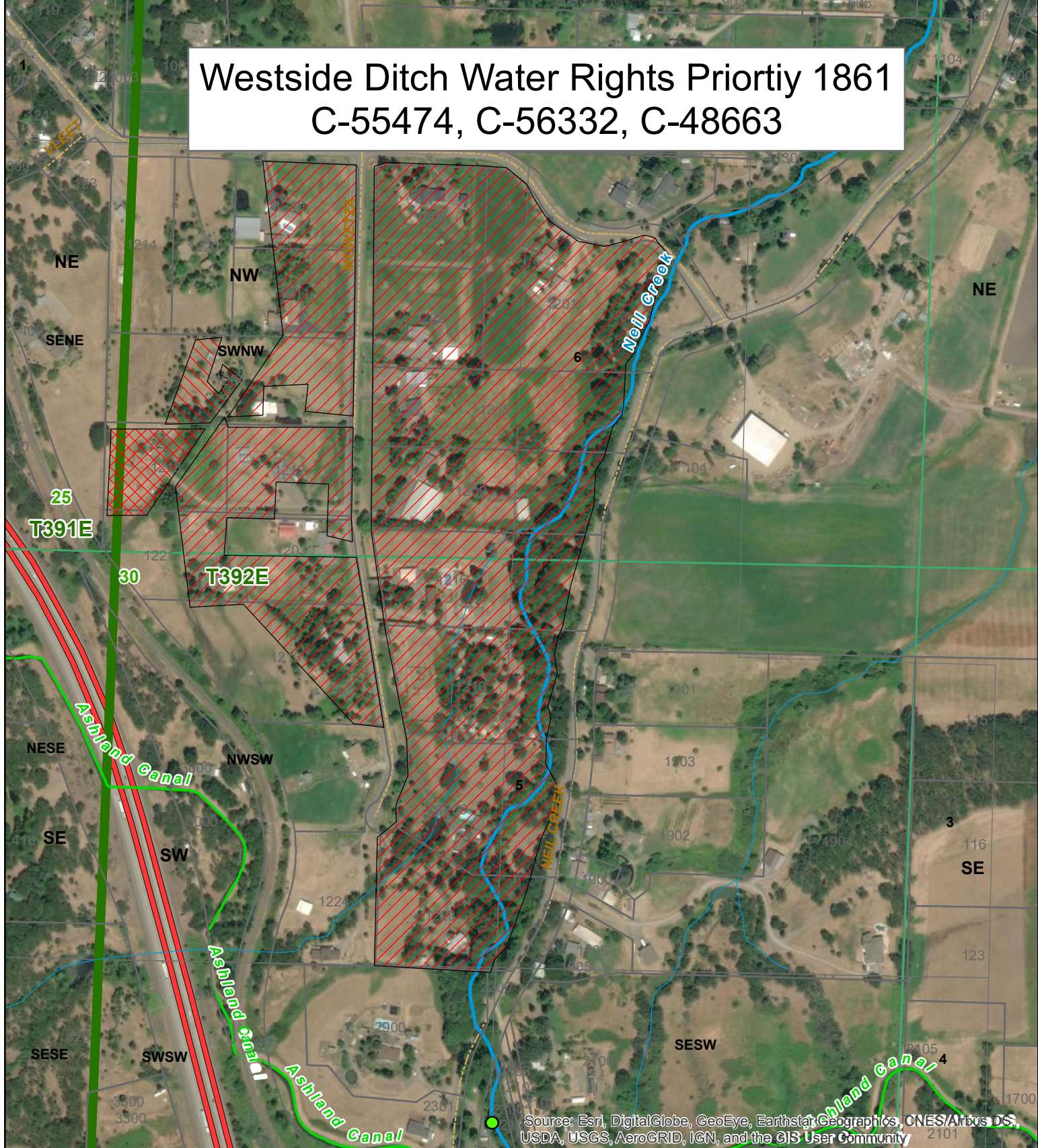


Westside Ditch Water Rights Priority 1861 C-55474, C-56332, C-48663

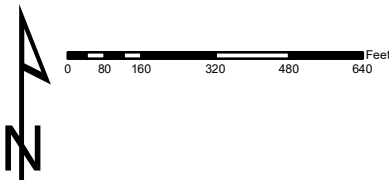


Source: Esri, DigitalGlobe, GeoEye, Earthstar Geographics, CNES/Airbus DS, USDA, USGS, AeroGRID, IGN, and the GIS User Community

Legend

- C-55474
- C-56332
- C-48663
- Taxlots
- Townships
- Sections
- Quarter Sections
- Quarter Quarter Sections

1 inch = 417 feet



**JACKSON COUNTY
WATERMASTER**

Staff

This map is based on a digital database compiled by Jackson County from a variety of sources. Jackson County cannot accept responsibility for errors, omissions, or positional accuracy. There are no warranties, expressed or implied.

Date: 08/23/2019; Neil Creek Westside Ditch.mxd; havness