

Robertson Map
1" = 1320'

Tax Lot:

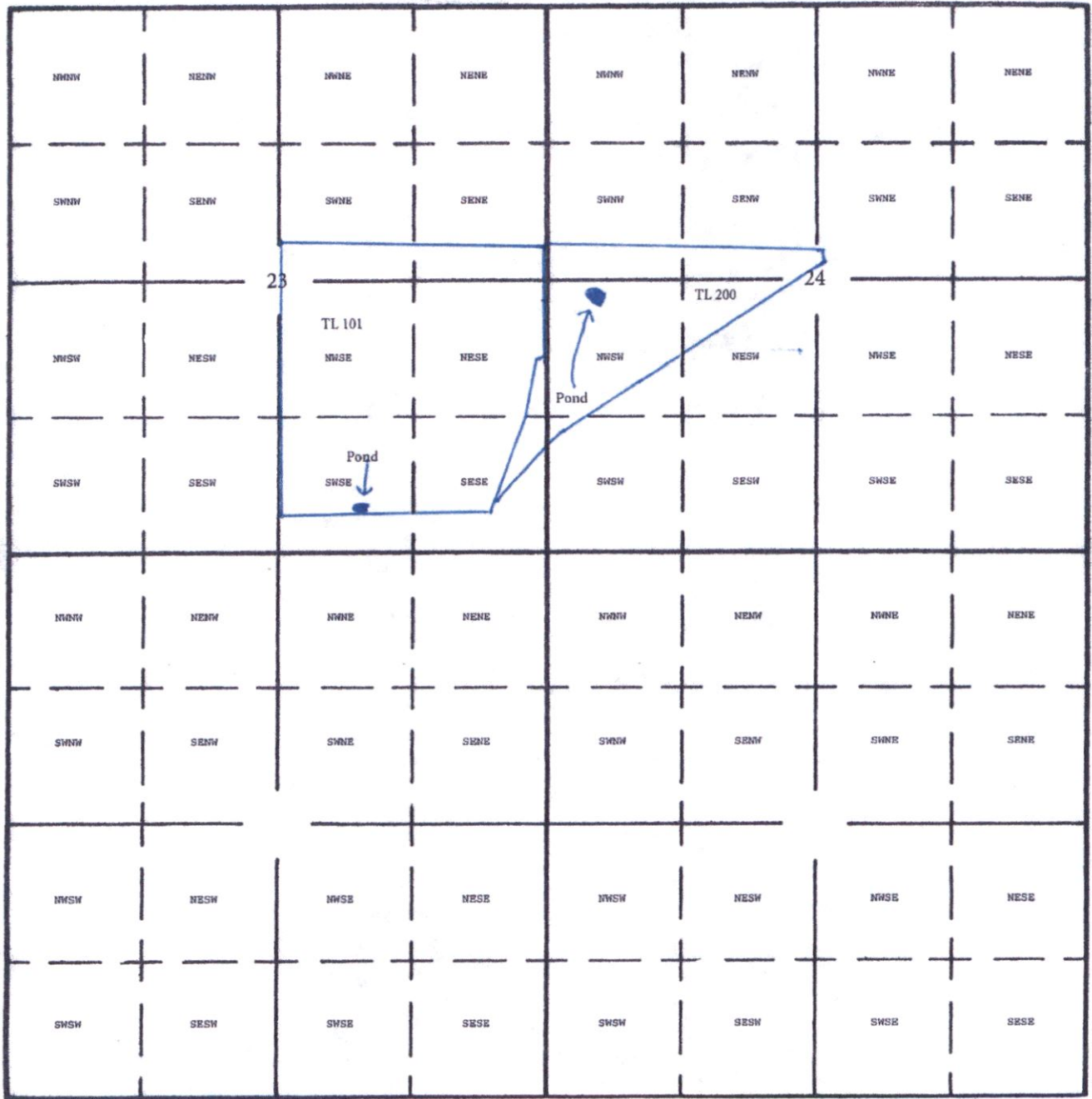
Township 9 South, Range 6 West, Section 23 & 24, Tax Lot 101 & 200



RECEIVED

AUG 29 2019

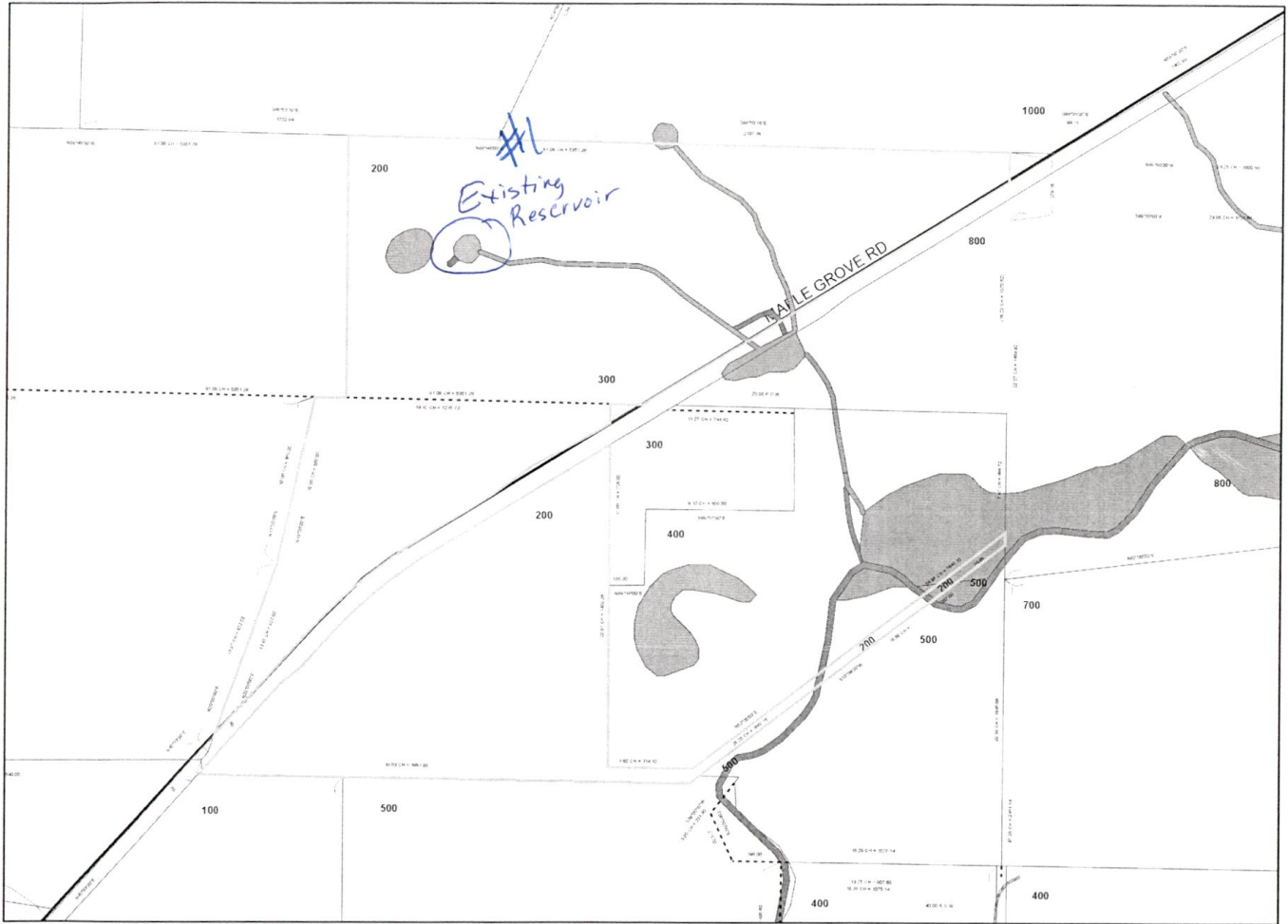
OWRD



Dam: 405 North & 1725 West from SE Corner Section 23
Dam: 2,400 North & 525 East from SW Corner Section 24

Grant Robertson
08-01-2019

Polk County Map



R-88734

<input type="checkbox"/>	City Limits	<input type="checkbox"/>	Taxlots
Urban Growth Boundaries			

RECEIVED

AUG 29 2019

OWRD

Date: 7/29/2019

This map was produced from the Polk County geographic databases to support its governmental activities. This product is for informational purposes and may not have been prepared for, or be suitable for legal, engineering, or surveying purposes. The county is not responsible for any map errors, possible misuse, or misinterpretation. To report a map error, please call (503)623-0713.

THIS MAP IS FOR ASSESSMENT AND TAXATION PURPOSES ONLY

SEC. 24 T.9S. R.6W. W.M.
Polk County

1" = 400'

9.6.24

S.E. CORNER
ANDREW J. WELCH
DLC NO. 41

S.E. CORNER
DLC NO. 47

S.W. CORNER
DLC NO. 41

S.E. CORNER
DLC NO. 41

N.E. CORNER
DLC NO. 41

N.T. CORNER
R.A.A. HOOKER
DLC NO. 48

N. CORNER
R.A.A. HOOKER
DLC NO. 48

W.E. CORNER
DLC NO. 41

N.T. CORNER
DLC NO. 48

W.E. CORNER
DLC NO. 41

N.T. CORNER
DLC NO. 48

E.S.W. CORNER
DLC NO. 41

E.S.W. CORNER
DLC NO. 41

N.T. CORNER
DLC NO. 48

E.S.W. CORNER
DLC NO. 41

N.T. CORNER
DLC NO. 48

N.E. CORNER
DLC NO. 41

N.E. CORNER
DLC NO. 41

N.E. CORNER
DLC NO. 48

N.E. CORNER
DLC NO. 41

S.E. CORNER
JOHN ALDRIDGE
DLC NO. 41

S.W. CORNER
ANDREW J. WELCH
DLC NO. 41

PARCEL 1
127.80 AC.

160.88 AC.

100
PARCEL 3
180.38 AC.

1997-0053

2-28

1994-
0035

800
24.33 AC.

97.24 AC.

1000
22 AC.

N.E. CORNER
JOHN M. LUMBALLY
DLC NO. 48

13-32

700
75.82 AC.

37.00 AC.

LOT 4
37.00 AC.

See Map 9.6.23

See Map 9.6.19

See Map 9.6.25

Canceled No.
100T1
500

RECEIVED
AUG 29 2019
OWRD

9.6.24

R-88734

2/13/2019

