

RECEIVED

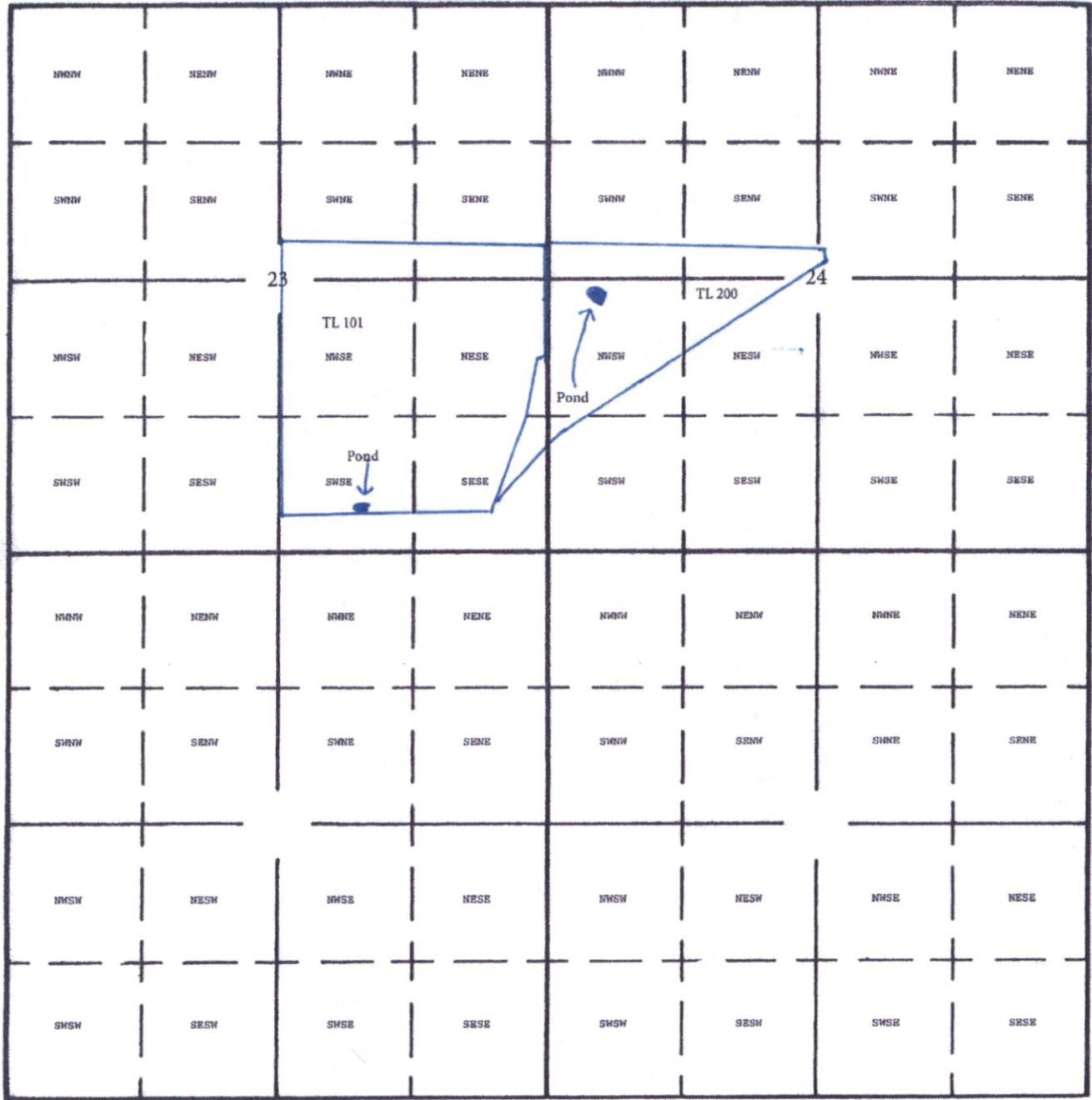
AUG 29 2019

OWRD

Robertson Map
1" = 1320'

Tax Lot:

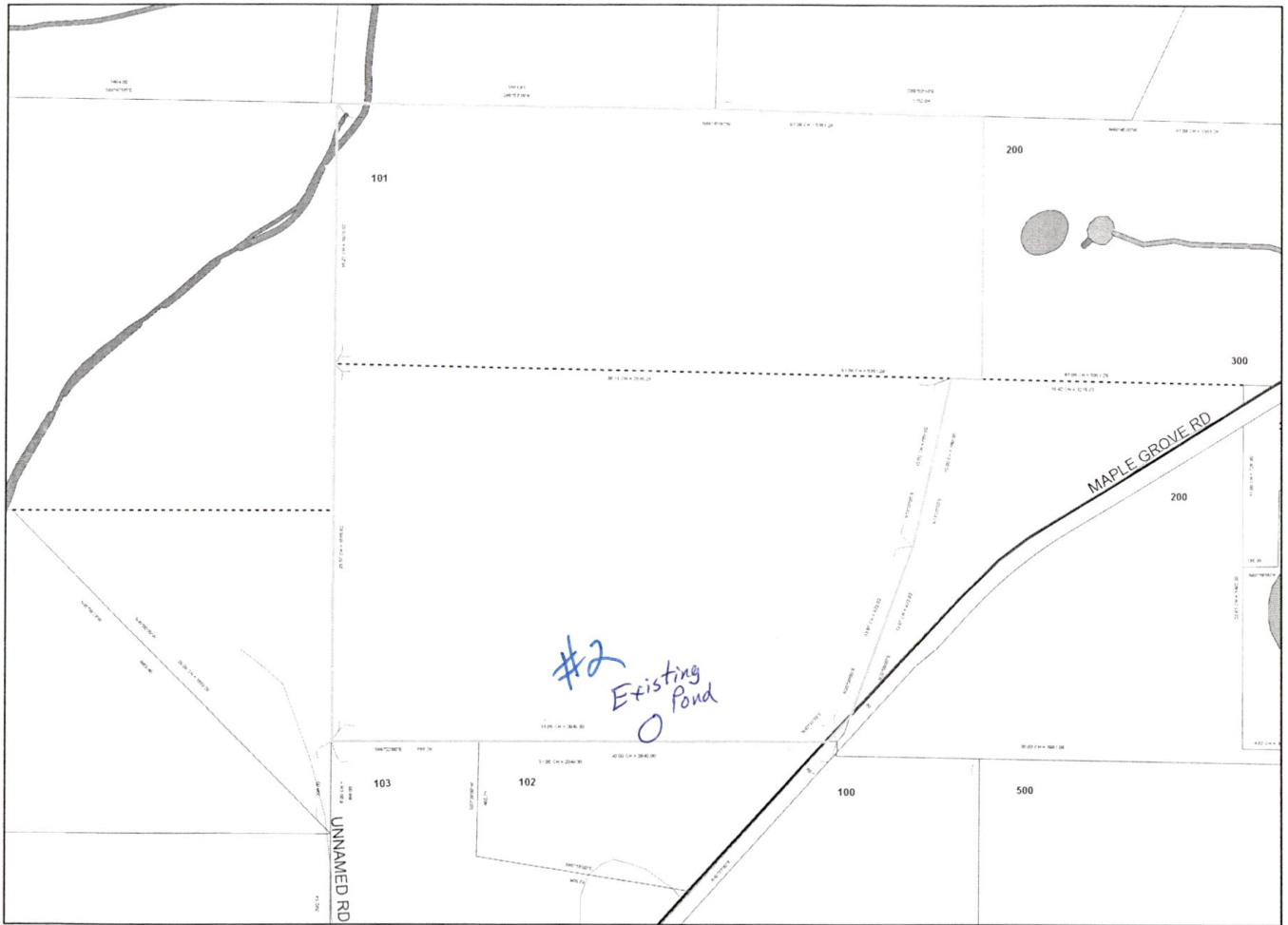
Township 9 South, Range 6 West, Section 23 & 24, Tax Lot 101 & 200



Dam: 405 North & 1725 West from SE Corner Section 23
Dam: 2,400 North & 525 East from SW Corner Section 24




Janet Robertson
08-01-2019

Polk County Map



#2 Existing Pond

R-88735

	City Limits		Taxlots
	Urban Growth Boundaries		

RECEIVED
AUG 29 2019
OWRD

Date: 7/29/2019
This map was produced from the Polk County geographic databases to support its governmental activities. This product is for informational purposes and may not have been prepared for, or be suitable for legal, engineering, or surveying purposes. The county is not responsible for any map errors, possible misuse, or misinterpretation. To report a map error, please call (503)623-0713.

IMPORTANT
This Map for Assessment
and Taxation Purposes
ONLY

SEC.23 T9S R6W WM
POLK COUNTY

Scale 1" = 400'

9.6.23

See Map 9.6.14

S.W. CORNER
ANDREW J. WELCH
DLC NO. 41
S.E.A. CORNER
DLC NO. 47

S.E.S. CORNER
DLC NO. 47
S.W. CORNER
DLC NO. 41

See Map 9.6.15
N.W. CORNER
JOHN ALDRIDGE
DLC NO. 47
S.W. CORNER
DLC NO. 48

102
88.34 AC
Parcel 2
DLC NO. 48

15 14
22 23

100
88.34 AC
Parcel 1
1997 - 0052

S.E.S. CORNER
JOHN ALDRIDGE
DLC NO. 47
S.W. CORNER
ANDREW J. WELCH
DLC NO. 41

14 13
23 24

Cancelled No.
201

See Map 9.6.24

See Map 9.6.22

200
124.80 AC
LOT 2 - 12.50 AC

2-28

S.W. CORNER
JOHN M. ZUMWALT
DLC NO. 48
101
147.00 AC

RECEIVED
AUG 29 2019
OWRD

300
88.68 AC
PT. PARCEL 1

P.T. 1991-0394

22 23
27 28

See Map 9.6.26

MAPLE GROVE
ROAD R-15

23 24
28 25

9.6.23

01/03/18

R-88735