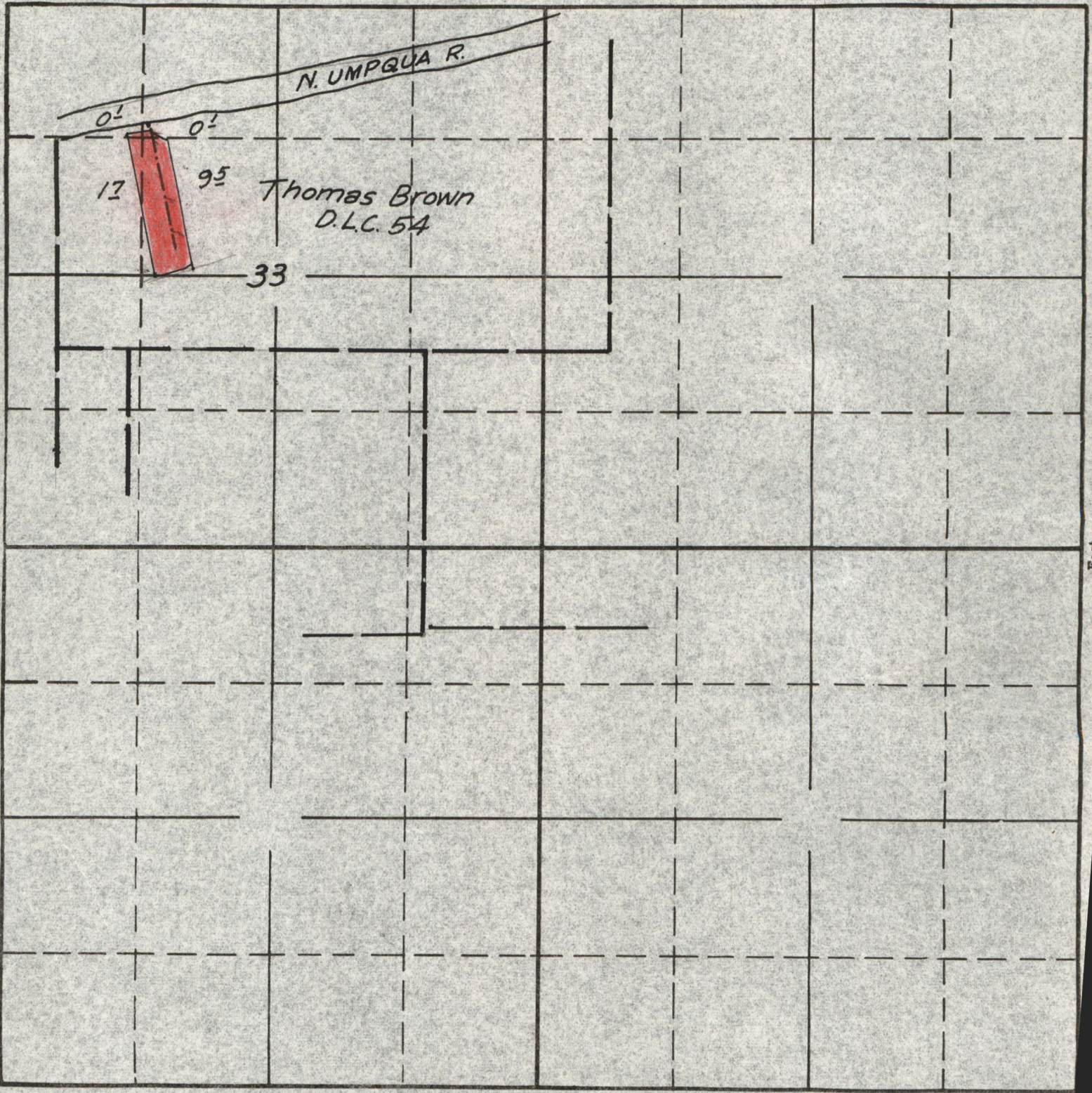


SECTION

TOWNSHIP ^{265.}~~18025~~, RANGE 6W, W. M.

North

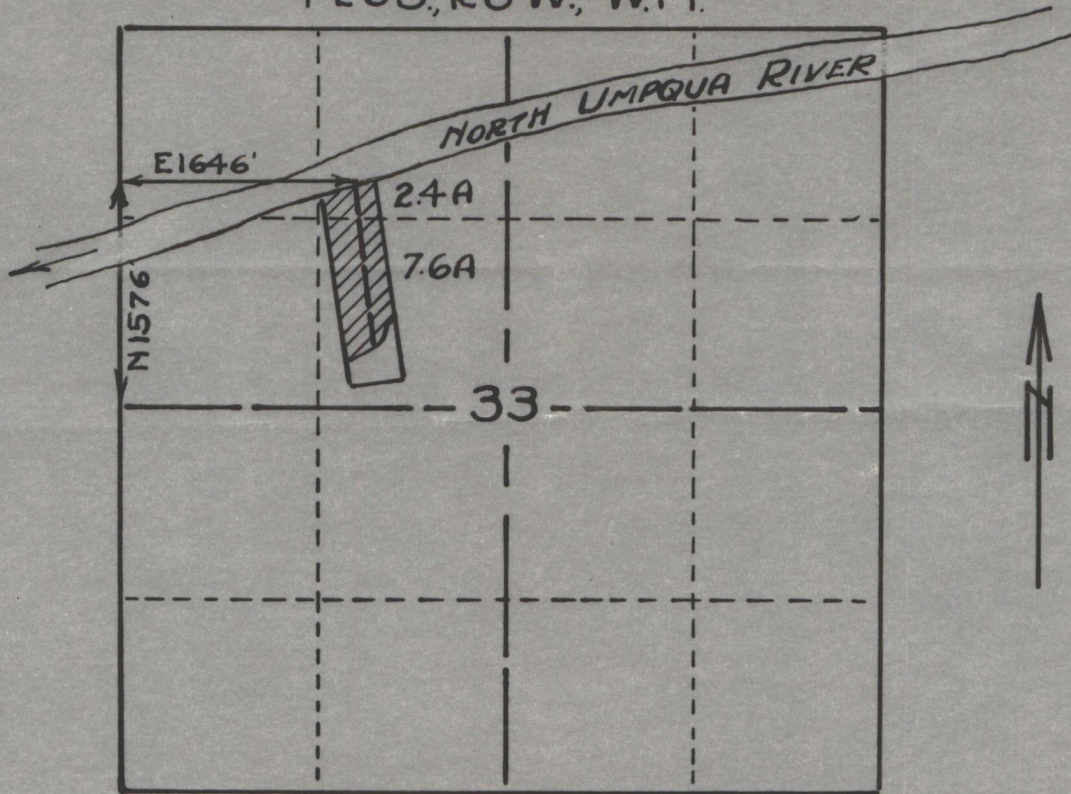


Surveyed July 10 1940 C.A.C.

South

APPLICATION No. 18025
PERMIT No. 13694

T26S, R6W, W.M.



SCALE 4" = 1 MILE

IRRIGATION SYSTEM OF
DALE GUILLEY
SECTION 33 T26SR6W.WM.

App. No. 18025
Per. No. 13694

PREPARED BY
BEN. B. IRVING. CIVIL ENGINEER.
ROSEBURG, OREGON.

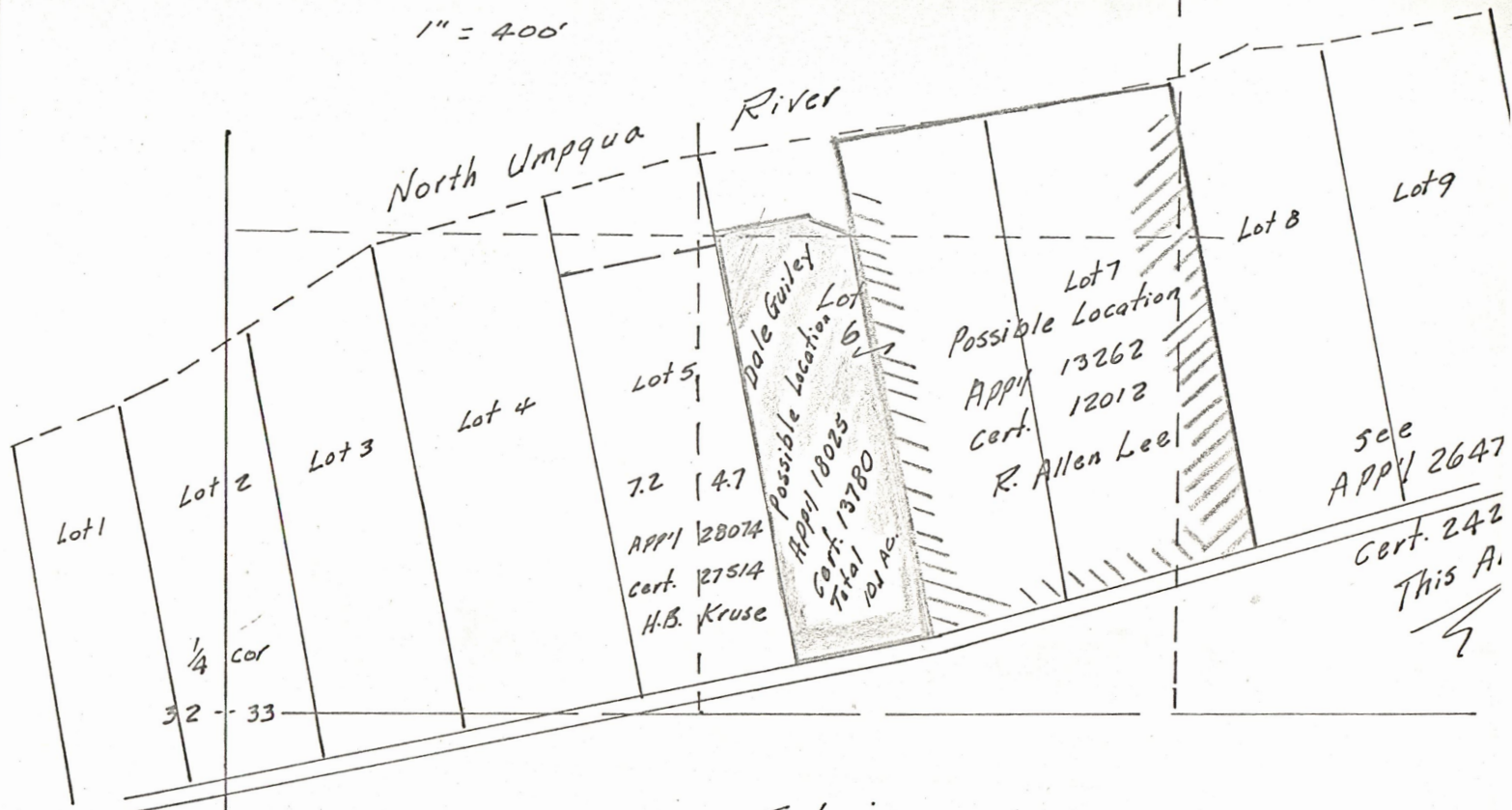
RECEIVED
MAY 12 1939
STATE ENGINEER
SALEM, OREGON

NOTE: This map was platted from data included in the DALE GUILLEY deed description and the filed PLAT of PLAT "C" N. CURRY ESTATE.

18025 a
16-25

Part of PLAT C
North Curry Estate
see App'l 26474

1" = 400'



File in
10825 ✓
13262
28074