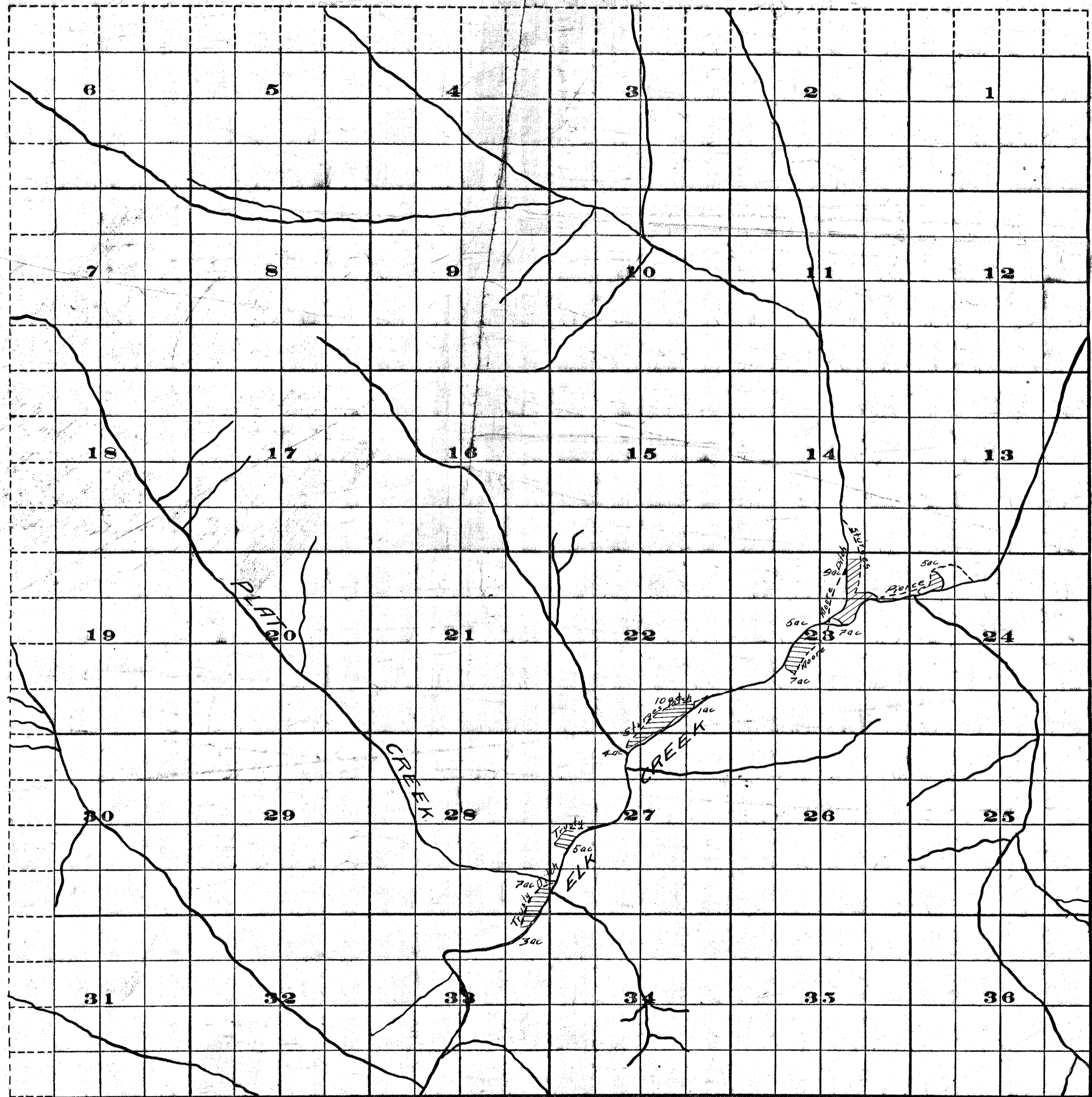
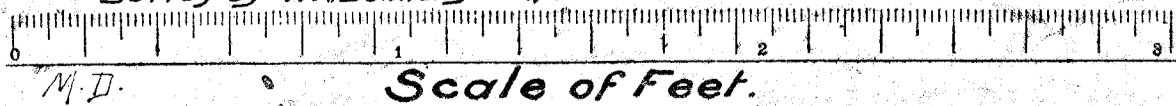


Township 325, Range 1E.



Survey by H.K. Donnelly April 1910.

FROM OFFICE OF THE STATE ENGINEER, SALEM, OREGON



M.D.
D.F.N. 11/5-11

Adjudication
Rogue River and Tributaries.
John H. Lewis State Engr.

Examined Sept. 18, 1911.