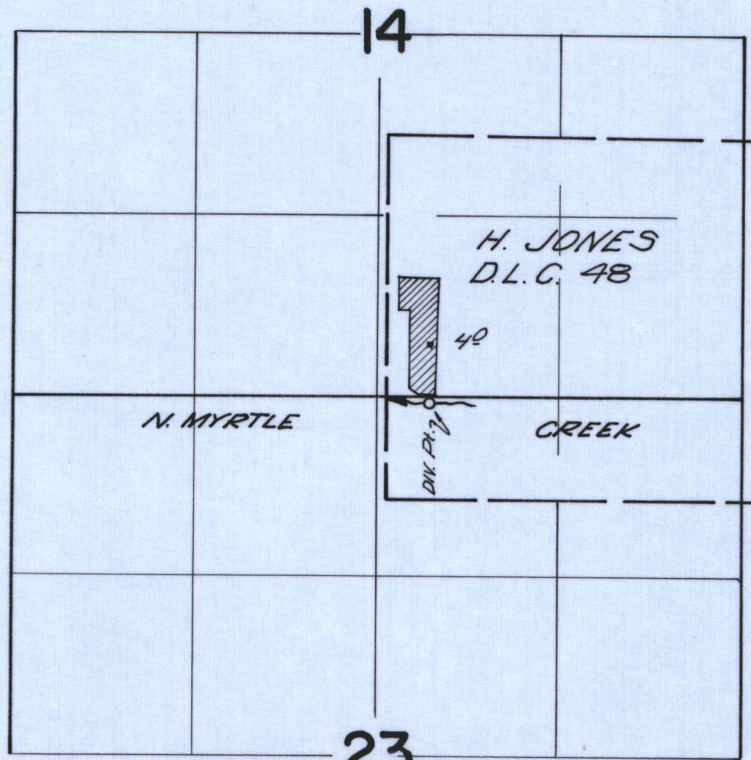


T.29S. R.5W. W.M.



*Div. pt. located 700 ft. N. and 310 ft. E. from the S.W. corner H. Jones D.L.C. #48*

**FINAL PROOF SURVEY**  
UNDER

Application No. 41197 Permit No. 30702  
IN NAME OF

FRANK GIBBONS

Surveyed Sept. 20 1967, by V. Garner