

THIS MAP IS FOR ASSESSMENT AND TAXATION PURPOSES ONLY

SEC. 10 T.9S. R.4W. W.M.
Polk County

See Map 9.4.3 1" = 400'

9.4.10

Wakcopy

See Map 9.4.2

See Map 9.4.11

Canceled No.
504
800

corner

13-5

See Map 9.4.9

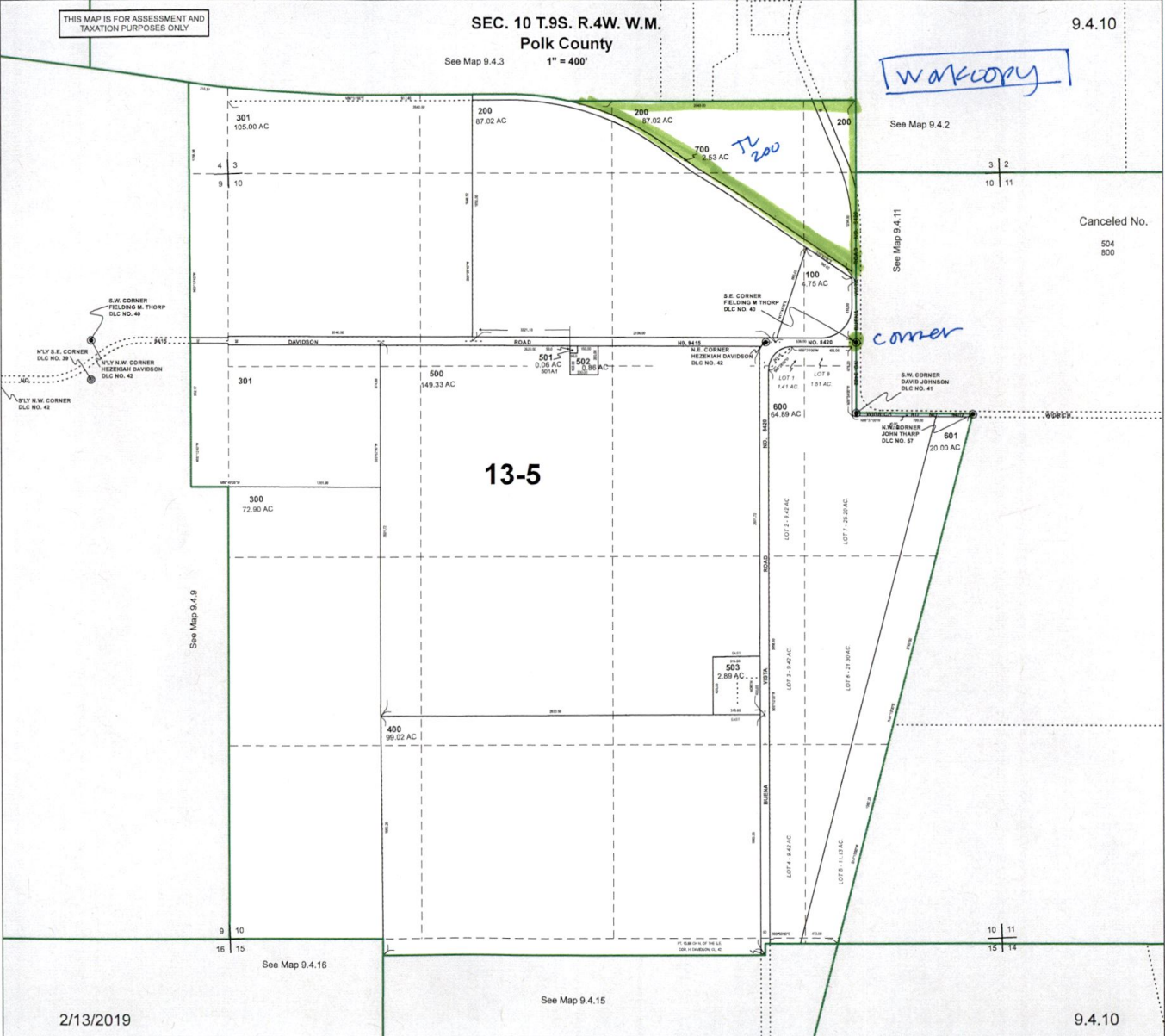
See Map 9.4.16

See Map 9.4.15

10 11
15 14

2/13/2019

9.4.10



RECEIVED

OCT 21 2019



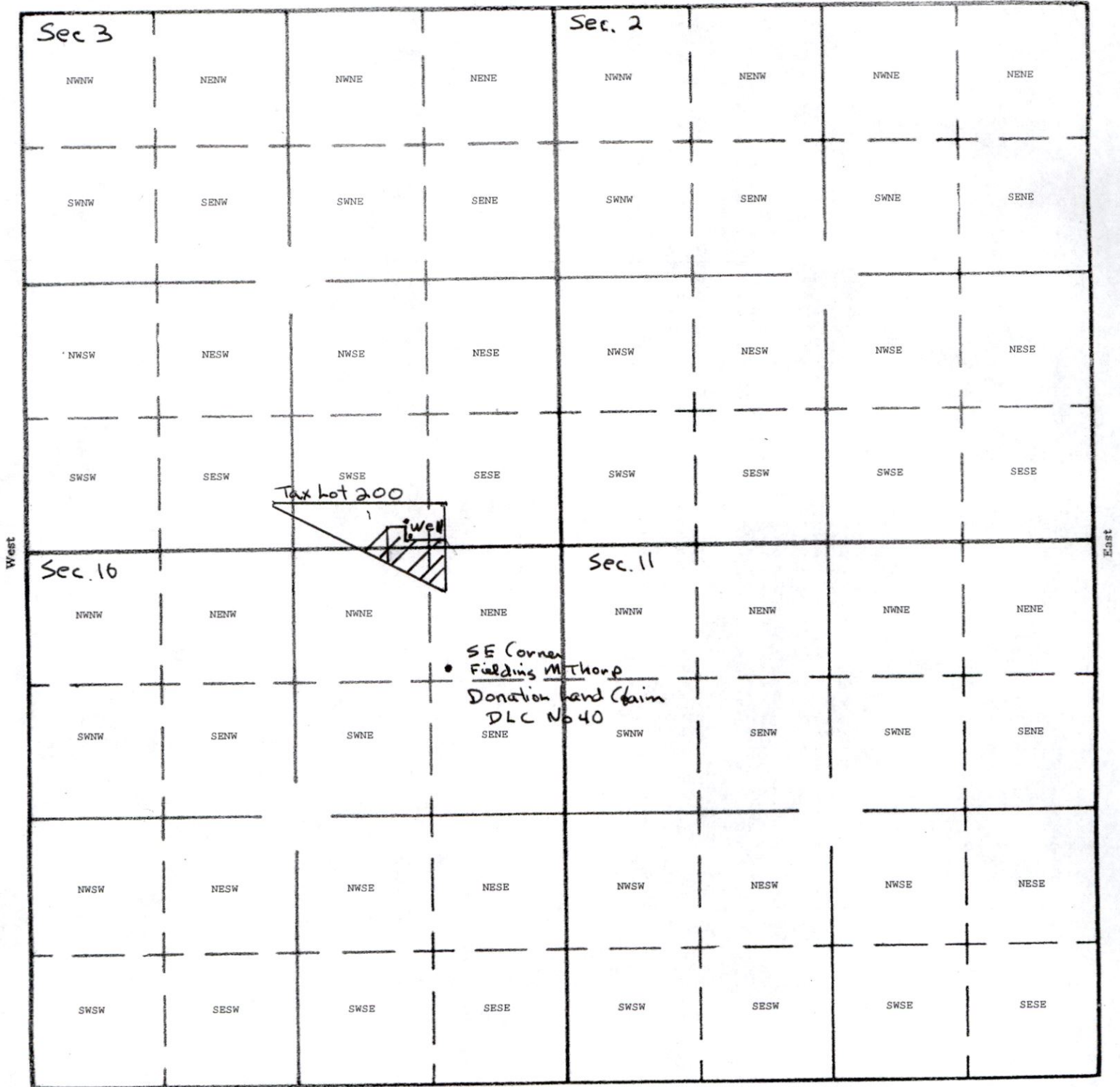
1" = 1320'

Tax Lot:

SW 1/4 SE 1/4 of

Township 9S, Range 4W, Section 3, Tax Lot 200

OWRD



irrigating 2 ac SW 1/4 of SE 1/4 Sec 3, 1/2 ac SE 1/4 of SE 1/4 Sec 3
 4 1/2 ac NW 1/4 of NE 1/4 Sec 10, 1 ac NE 1/4 of NE 1/4 Sec 10
 South

POD:
POD:

Well is located 1500' N 500' W of DLC No 40

app G-10044