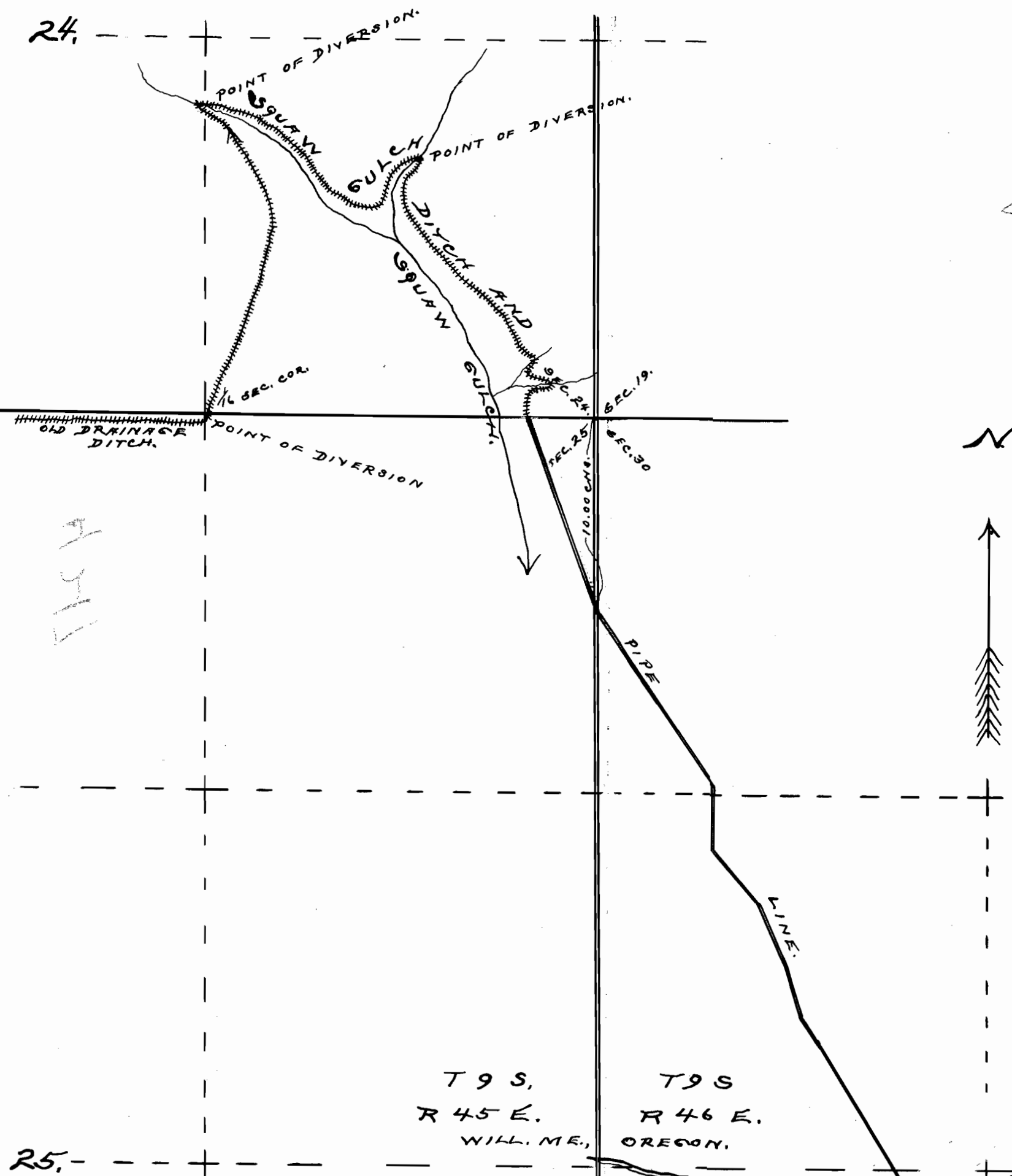


24

FILED

Application No 4217
Form No 2447.

RECORDED
JAN 9 1915
SALEM, OREGON



SKETCH

SHOWING
 THE SQUAW GULCH DITCH & PIPE LINE
 LOCATED IN SECS. 24-25, T9S, R45E + IN
 SECS. 30+31, T9S, R46E, W. M., ORE., AND LANDS
 IRRIGABLE WITH WATER CARRIED THEREIN
 SCALE, ONE INCH = 6.00 CHS.
 SURVEYED OCT. 27 + 28, 1914

By *Ira L. Hoffman,*
County Surveyor

CERTIFICATE OF SURVEYOR.

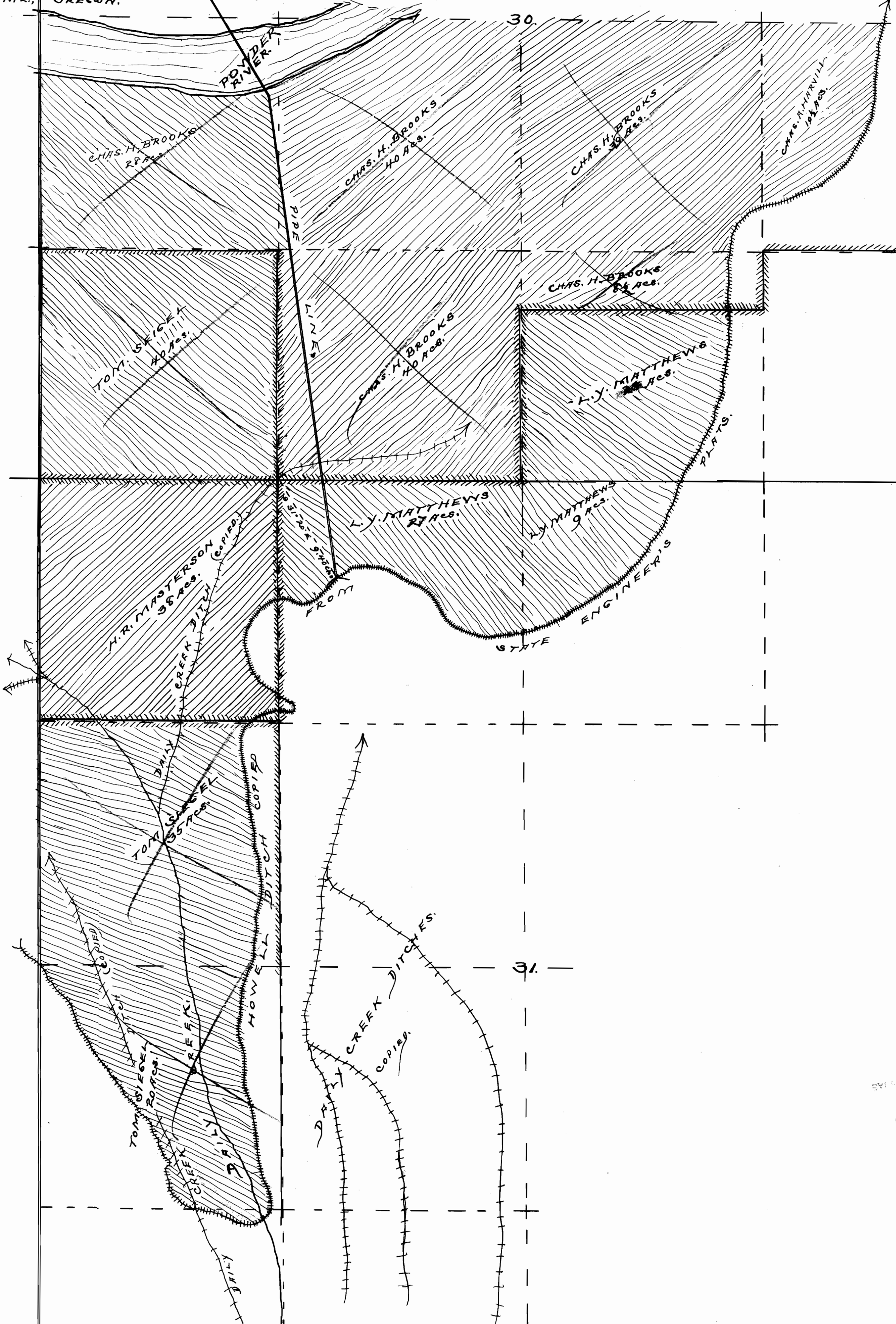
I, IRA L. HOFFMAN, OF BAKER, ORE., DO HEREBY CERTIFY THAT
 THIS MAP WAS MADE FROM NOTES TAKEN DURING AN ACTUAL SURVEY
 MADE BY ME ON OCT. 27 + 28, 1914, + FROM DATA TAKEN FROM THE
 STATE ENGINEER'S WATER ADJUDICATION MAP, AND THAT IT COR-
 RECTLY REPRESENTS THE WORKS SHOWN THEREON, TOGETHER WITH THE
 LOCATION OF STREAMS + OTHER DITCHES IN THE IMMEDIATE VICINITY,
 AND HAS WRITTEN THEREON THE AREA IN EACH LEGAL SUBDIVIS-
 ION WHICH IT IS PROPOSED TO IRRIGATE.

Ira L. Hoffman,
County Surveyor.

T9S, R45E.
WILL. ME., OREGON.

T9S, R46E.
WILL. ME., OREGON.

25



FILED

FILED

SEAL