

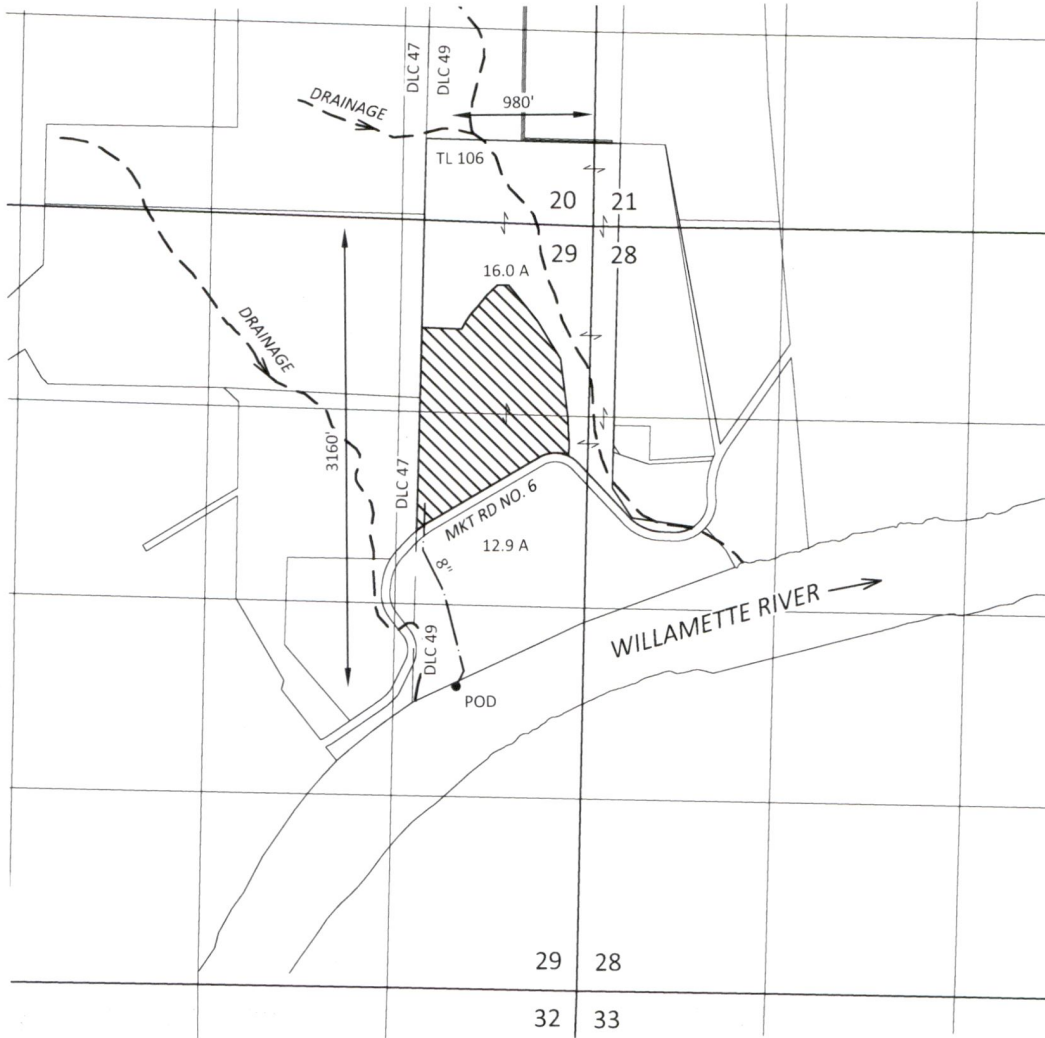
Section 29, T3S, R1W, W.M.,
Clackamas County, Oregon

RECEIVED




NOV 25 2019

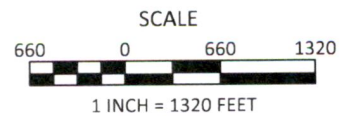
LIMITED LICENSE APPLICATION MAP
Morningstar 2006 LLC

OWRD



EXPLANATION

-  PROPOSED PLACE OF USE
28.9 ACRES
-  PIPE
-  POINT OF DIVERSION (POD)



October 24, 2019

This map is not intended to provide legal
dimensions or locations of property
ownership lines

Figure 1

SKOOKUM
WATER ASSOCIATES INC

1626 VICTORIAN WAY
EUGENE, OR 97401
(503) 319-8926

LL-1809