

John Mayfield Application for Ground Water Right

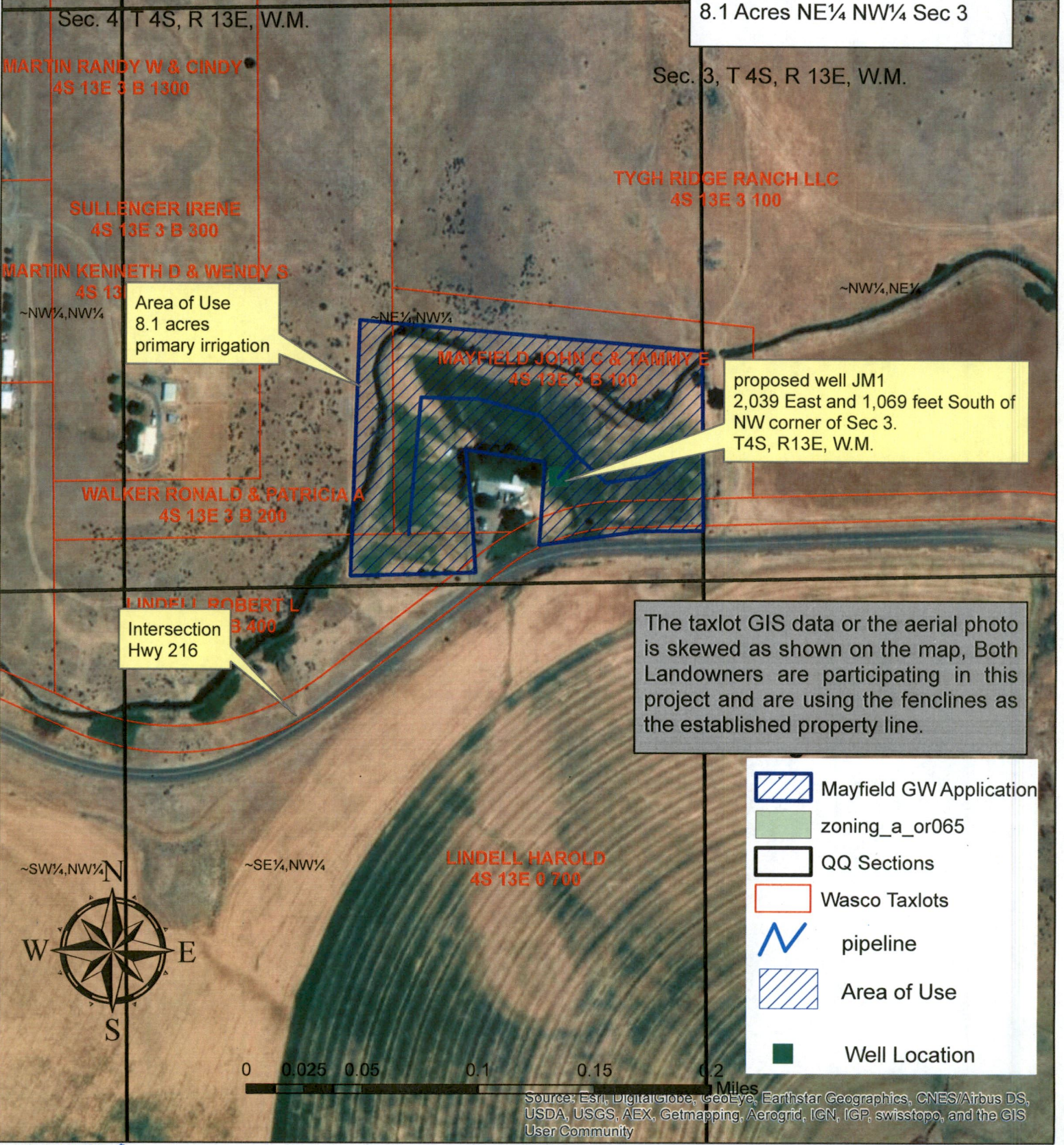
1 inch = 300 feet
Tygh Valley, Oregon

RECEIVED
DEC 09 2019
OWRD

RECEIVED
JUL 25 2019
OWRD

TYGH RIDGE RANCH LLC
3S 13E 0 4100
SW¼, SE¼

POU Summary
8.1 Acres NE¼ NW¼ Sec 3










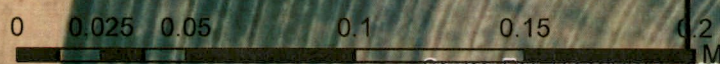
Area of Use
8.1 acres
primary irrigation

proposed well JM1
2,039 East and 1,069 feet South of
NW corner of Sec 3.
T4S, R13E, W.M.

Intersection
Hwy 216

The taxlot GIS data or the aerial photo is skewed as shown on the map, Both Landowners are participating in this project and are using the fences as the established property line.

-  Mayfield GW Application
-  zoning_a_or065
-  QQ Sections
-  Wasco Taxlots
-  pipeline
-  Area of Use
-  Well Location



Source: Esri, DigitalGlobe, GeoEye, Earthstar Geographics, CNES/Airbus DS, USDA, USGS, AEX, Getmapping, Aerogrid, IGN, IGP, swisstopo, and the GIS User Community