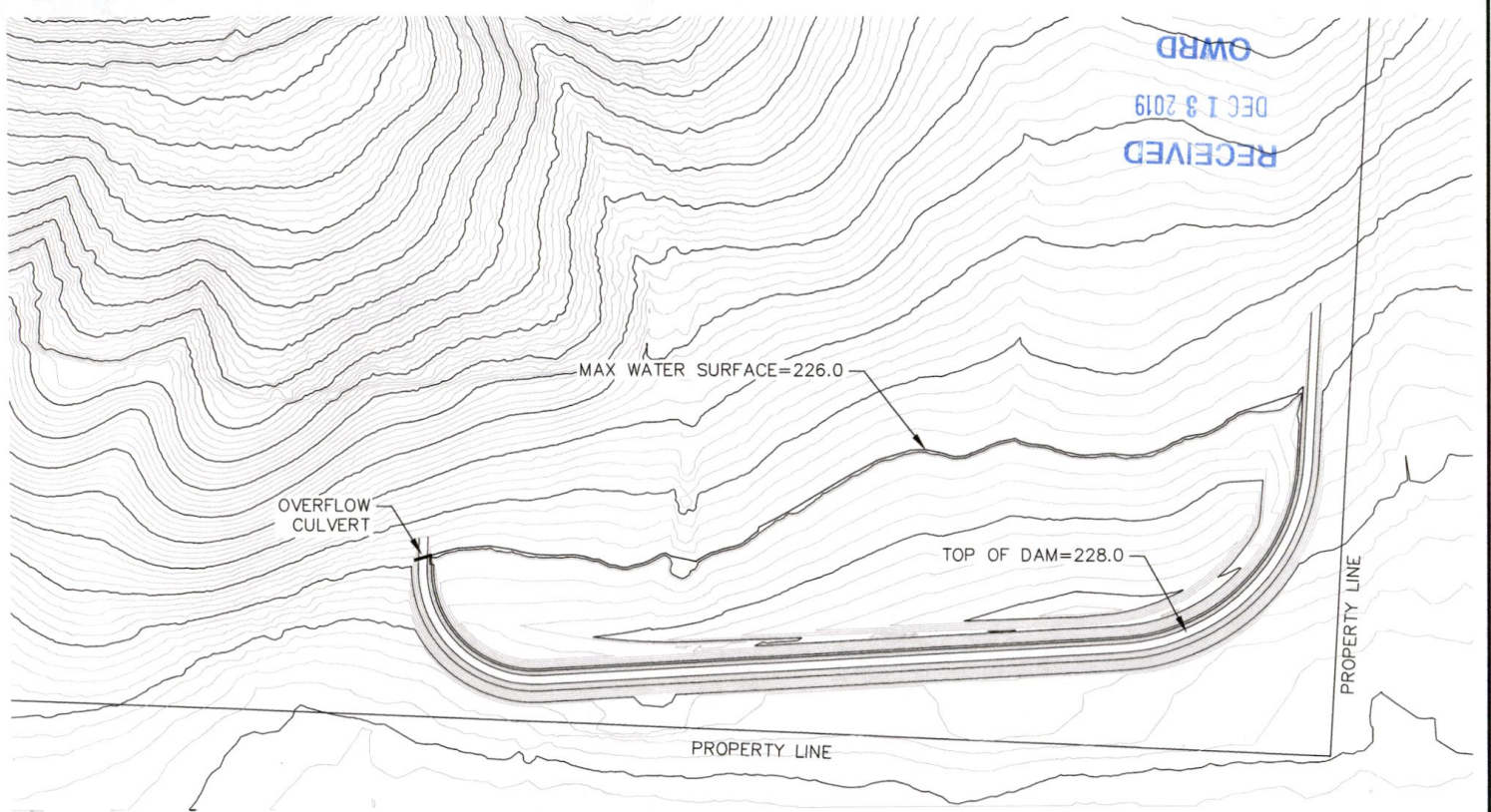
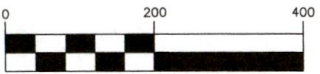


R-00706

COELHO RESERVOIR\ACAD COELHO LIDAR.DWG



GRAPHIC SCALE



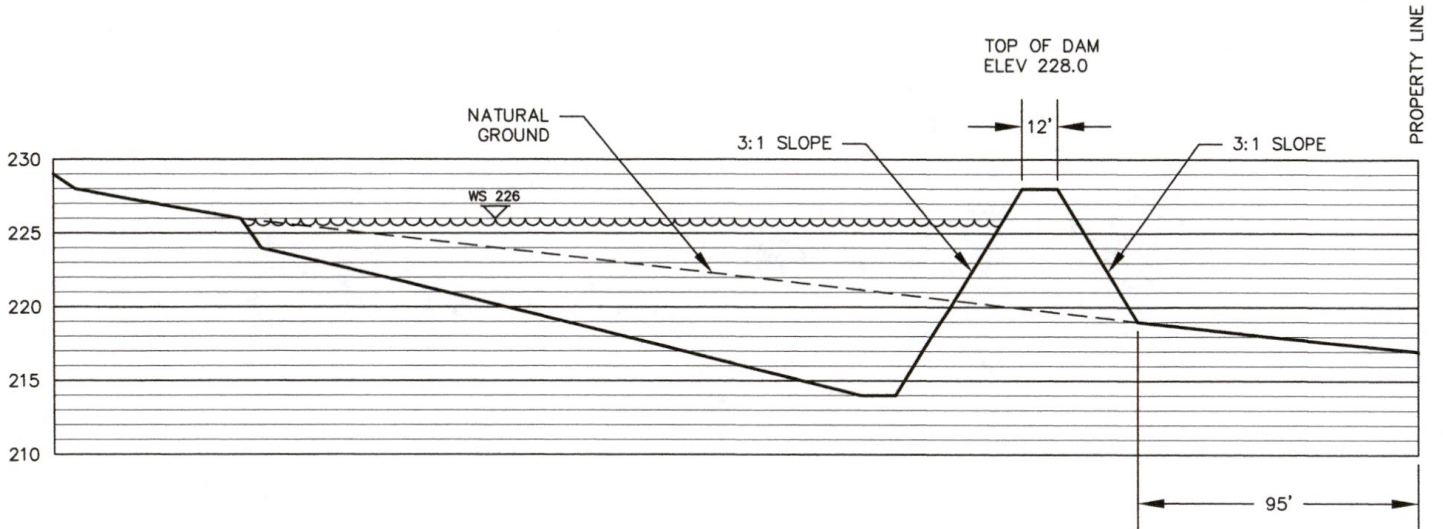
(IN FEET)
1 inch = 200 ft.



THIS IS A NON-ENGINEERED 12' WIDE DAM. THE TOP OF DAM ELEVATION IS 228.0 AND THE MAXIMUM WATER SURFACE IS 226.0. THE VOLUME OF THE DAM WITH NO EXCAVATION WOULD BE APPROXIMATELY 17.64 ACFT. ASSUMING THE REQUIRED FILL TO BUILD THE DAM WOULD COME FROM THE INSIDE OF THE DAM, WOULD INCREASE THE VOLUME TO APPROXIMATELY 27.97 ACFT. THE DAM FOOTPRINT AND WATER SURFACE HAVE AN AREA OF 7.13 ACRES.

COELHO FAMILY RESERVOIR

Lucky Rooster Vineyards, LLC		
NON-ENGINEERED DAM		
Secs 4 & 9, T7S, R5W, WM		POLK COUNTY, OREGON
Scale: 1" = 200'	Date: JULY, 2019	Revised:
Design:	Boatwright Engineering, Inc.	Job No.
Drawn: PHD	2613 12th Street SE, SALEM, OREGON 97302	Sheet
Chkd: CFB	TEL: (503) 363-9225 FAX: (503) 363-1051	1 of 1



Dam & Reservoir Cross-Section

Lucky Rooster Vineyards, LLC

SEPTEMBER 16, 2019

SCALE:
 HORIZ 1" = 50'
 VERT 1" = 5'

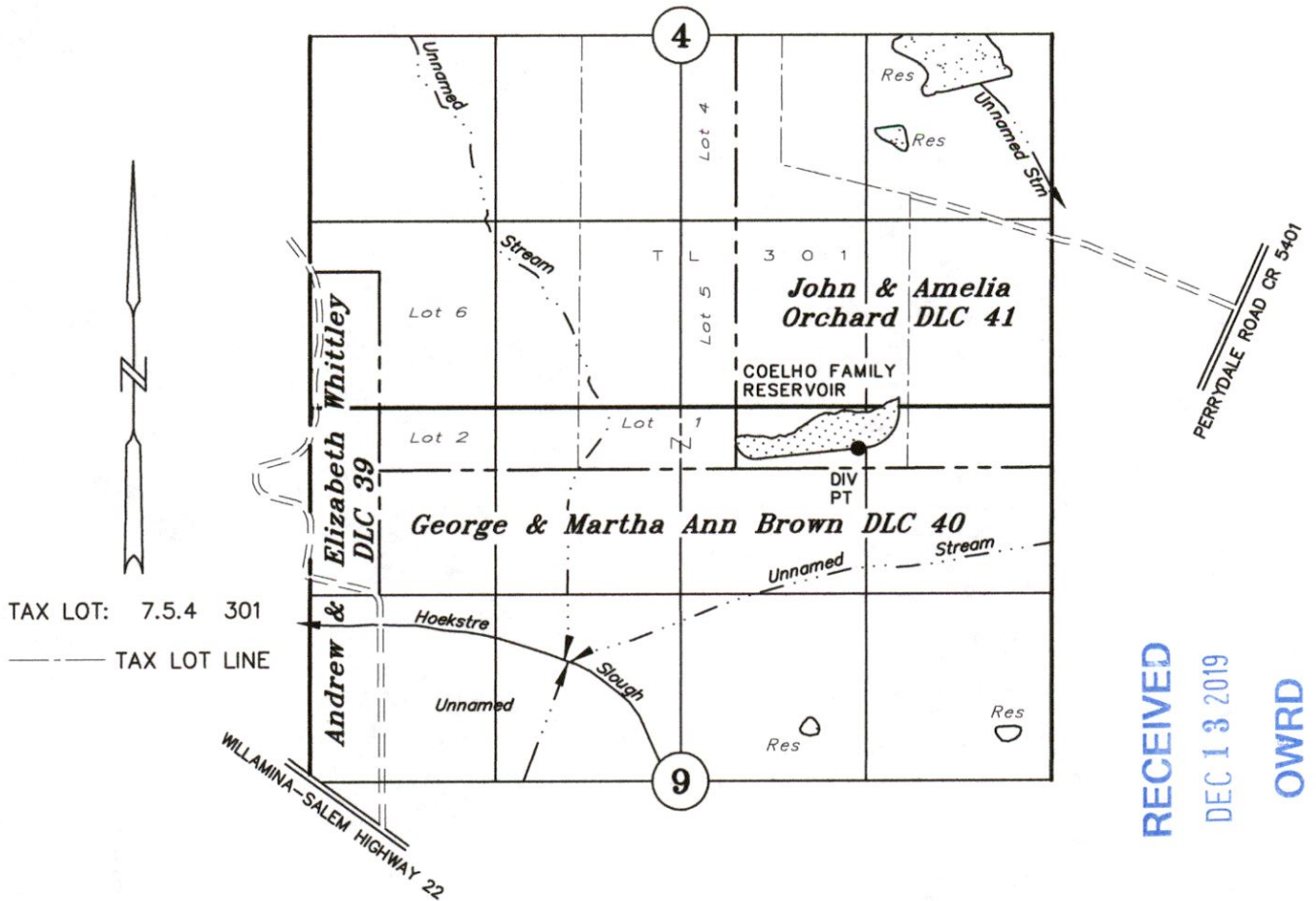
Boatwright Engineering, Inc.
 Salem, Oregon

RECEIVED
 DEC 13 2019
 OWRD

R-00706

T7S R5W, WM

POLK COUNTY



RECEIVED
DEC 13 2019
OWRD

DIV PT: 870' East & 140' North of SW Cor John S. & Amelia M. Orchard DLC 51

APPLICATION FOR A PERMIT TO STORE WATER IN A RESERVOIR

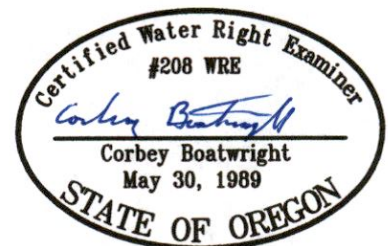
ALTERNATE REVIEW PROCESS
NON-ENGINEERED DAM

Application No. _____ Permit No. _____

Lucky Rooster Vineyards, LLC

SEPTEMBER 16, 2019

SCALE: 1" = 1320'



NOTE: This map is for the purpose of identifying the location of water rights and has no intent to dimension or locate property ownership lines.

Renewal Date: December 31, 2019

R-98786