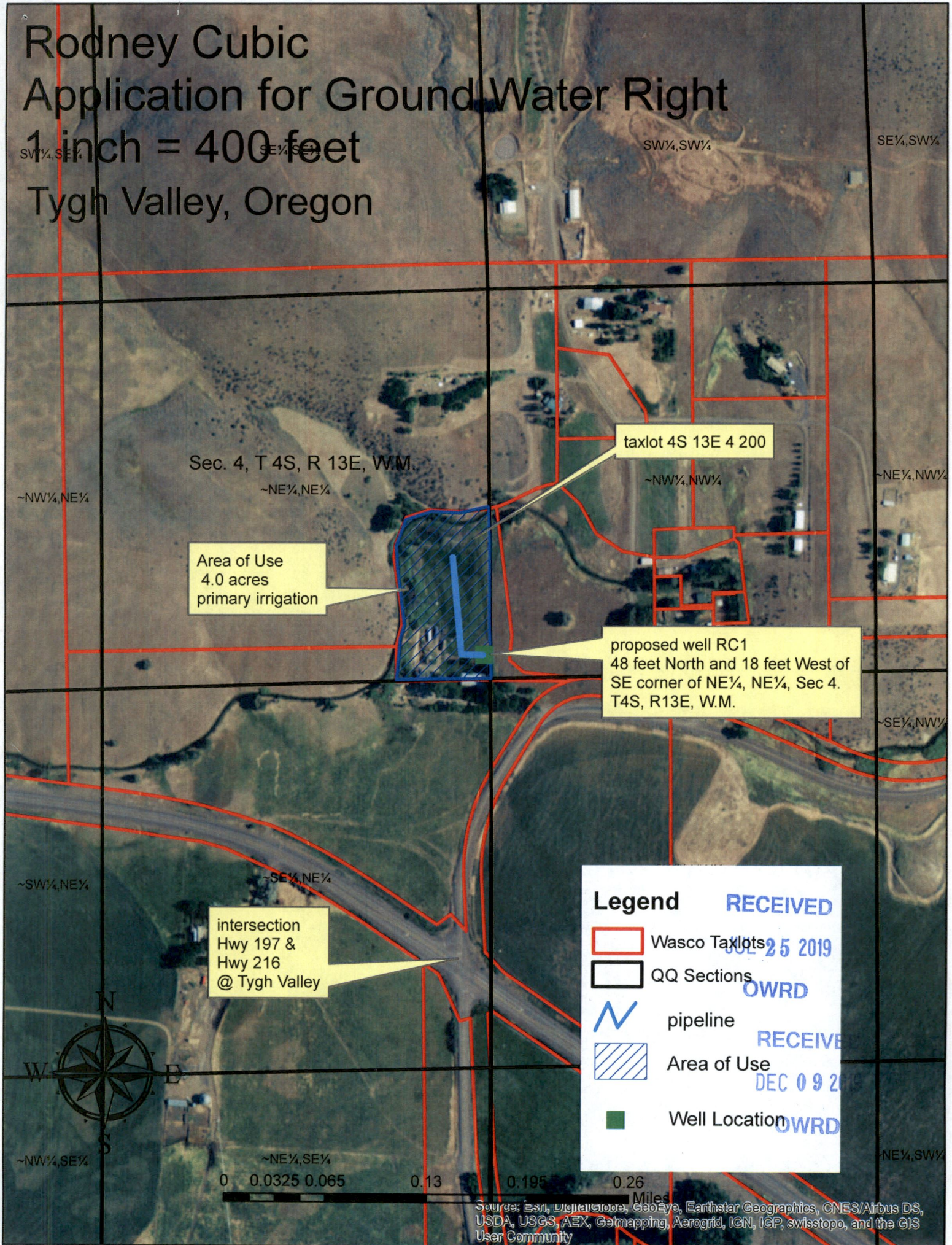


Rodney Cubic Application for Ground Water Right

1 inch = 400 feet

Tygh Valley, Oregon



Sec. 4, T 4S, R 13E, W.M.

taxlot 4S 13E 4 200

Area of Use
4.0 acres
primary irrigation

proposed well RC1
48 feet North and 18 feet West of
SE corner of NE 1/4, NE 1/4, Sec 4.
T4S, R13E, W.M.

intersection
Hwy 197 &
Hwy 216
@ Tygh Valley

Legend

- Wasco Taxlots
- QQ Sections
- ~ pipeline
- Area of Use
- Well Location

RECEIVED
JUL 25 2019
OWRD
RECEIVED
DEC 09 2019
OWRD

0 0.0325 0.065 0.13 0.195 0.26
Miles

Source: Esri, DigitalGlobe, GeoEye, Earthstar Geographics, CNES/Airbus DS, USDA, USGS, AEX, Geomapping, Aerogrid, IGN, IGP, swisstopo, and the GIS User Community

G-100009