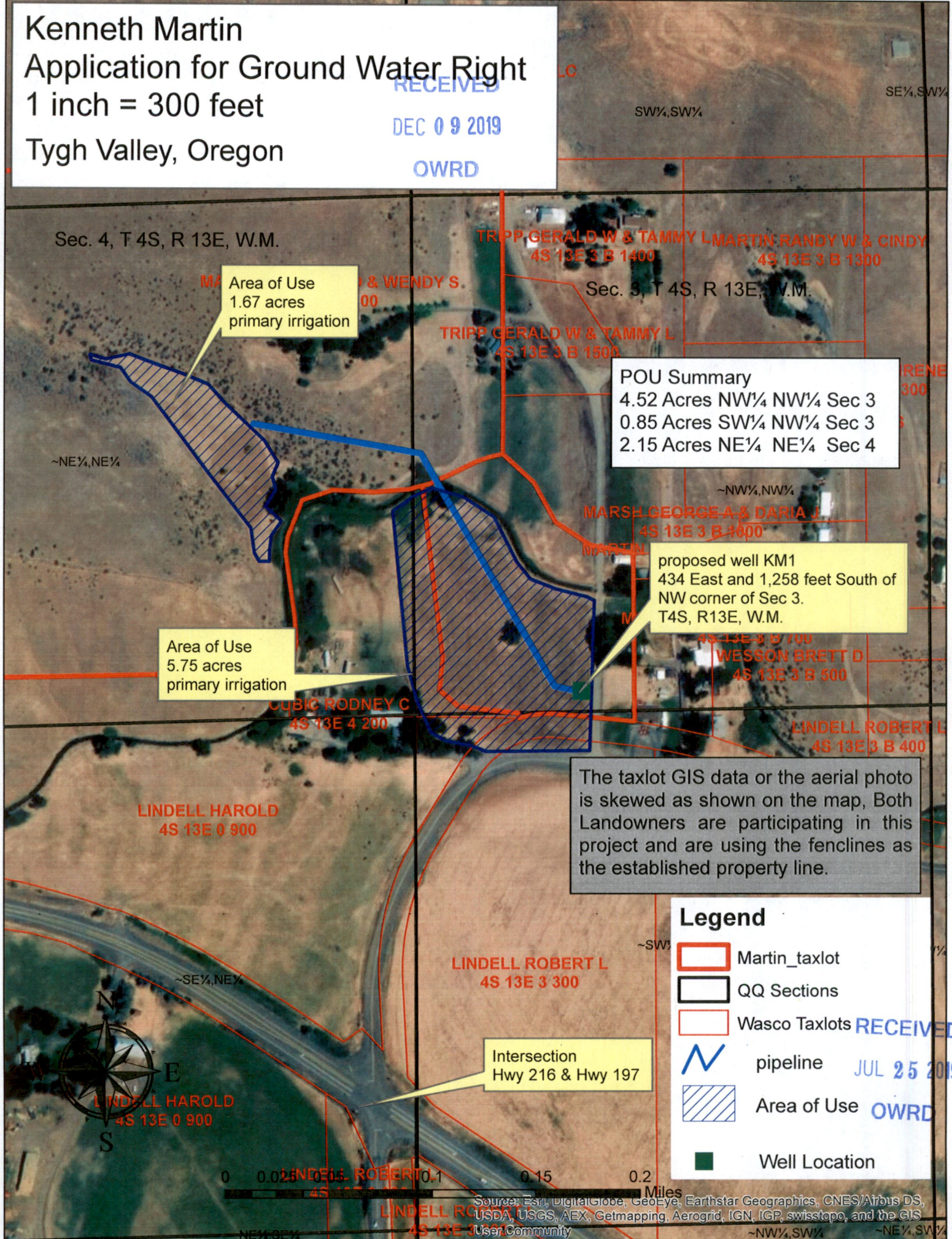


Kenneth Martin
Application for Ground Water Right
 1 inch = 300 feet
 Tygh Valley, Oregon

RECEIVED
 DEC 09 2019
 OWRD



Area of Use
 1.67 acres
 primary irrigation

Area of Use
 5.75 acres
 primary irrigation

POU Summary
 4.52 Acres NW¼ NW¼ Sec 3
 0.85 Acres SW¼ NW¼ Sec 3
 2.15 Acres NE¼ NE¼ Sec 4

proposed well KM1
 434 East and 1,258 feet South of
 NW corner of Sec 3.
 T4S, R13E, W.M.

The taxlot GIS data or the aerial photo is skewed as shown on the map, Both Landowners are participating in this project and are using the fences as the established property line.

Legend

- Martin_taxlot
- QQ Sections
- Wasco Taxlots
- N pipeline
- Area of Use
- Well Location

Sec. 4, T 4S, R 13E, W.M.

Sec. 3, T 4S, R 13E, W.M.

TRIPP GERALD W & TAMMY L MARTIN RANDY W & CINDY
 4S 13E 3 B 1400 4S 13E 3 B 1300

TRIPP GERALD W & TAMMY L
 4S 13E 3 B 1500

MARSH GEORGE A & DARIA J
 4S 13E 3 B 1600

WESSON BRETT D
 4S 13E 3 B 500

LINDELL ROBERT L
 4S 13E 3 B 400

LINDELL HAROLD
 4S 13E 0 900

LINDELL ROBERT L
 4S 13E 3 300

LINDELL HAROLD
 4S 13E 0 900

LINDELL ROBERT L
 4S 13E 3 300

Source: Esri, DigitalGlobe, GeoEye, Earthstar Geographics, CNES/Airbus DS, USDA, USGS, AEX, Getmapping, Aerogrid, IGN, IGP, swisstopo, and the GIS User Community

RECEIVED
 JUL 25 2019
 OWRD



0 0.05 0.1 0.15 0.2 Miles