

RECEIVED

JAN 21 2020

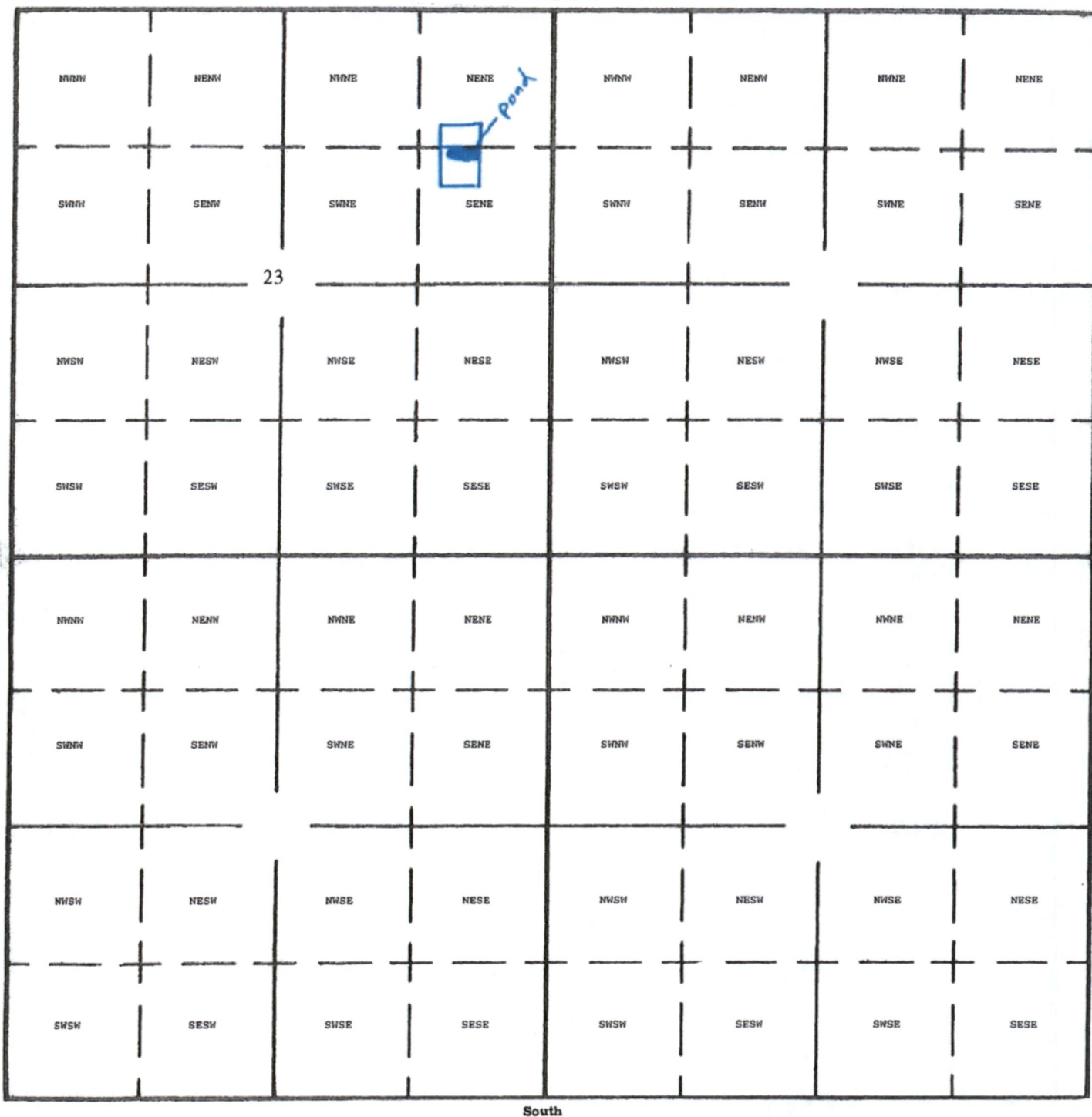
OWRD

Marc Willcutts

1" = 1320'

Tax Lot:

Township 3 South, Range 3 West, Section 23, Tax Lot 609 & 610



Dam Location: 1375 South and 690 West from NE Corner Section 23

R-88794

RECEIVED

JAN 21 2020

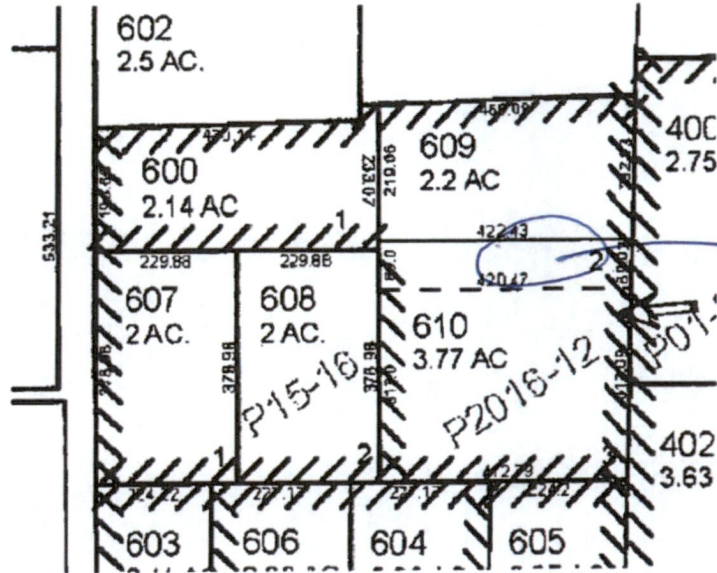
OWRD



First American



This map is furnished for illustration and to assist in property location. The company assumes no liability for any variation in dimensions by location ascertainable by actual survey



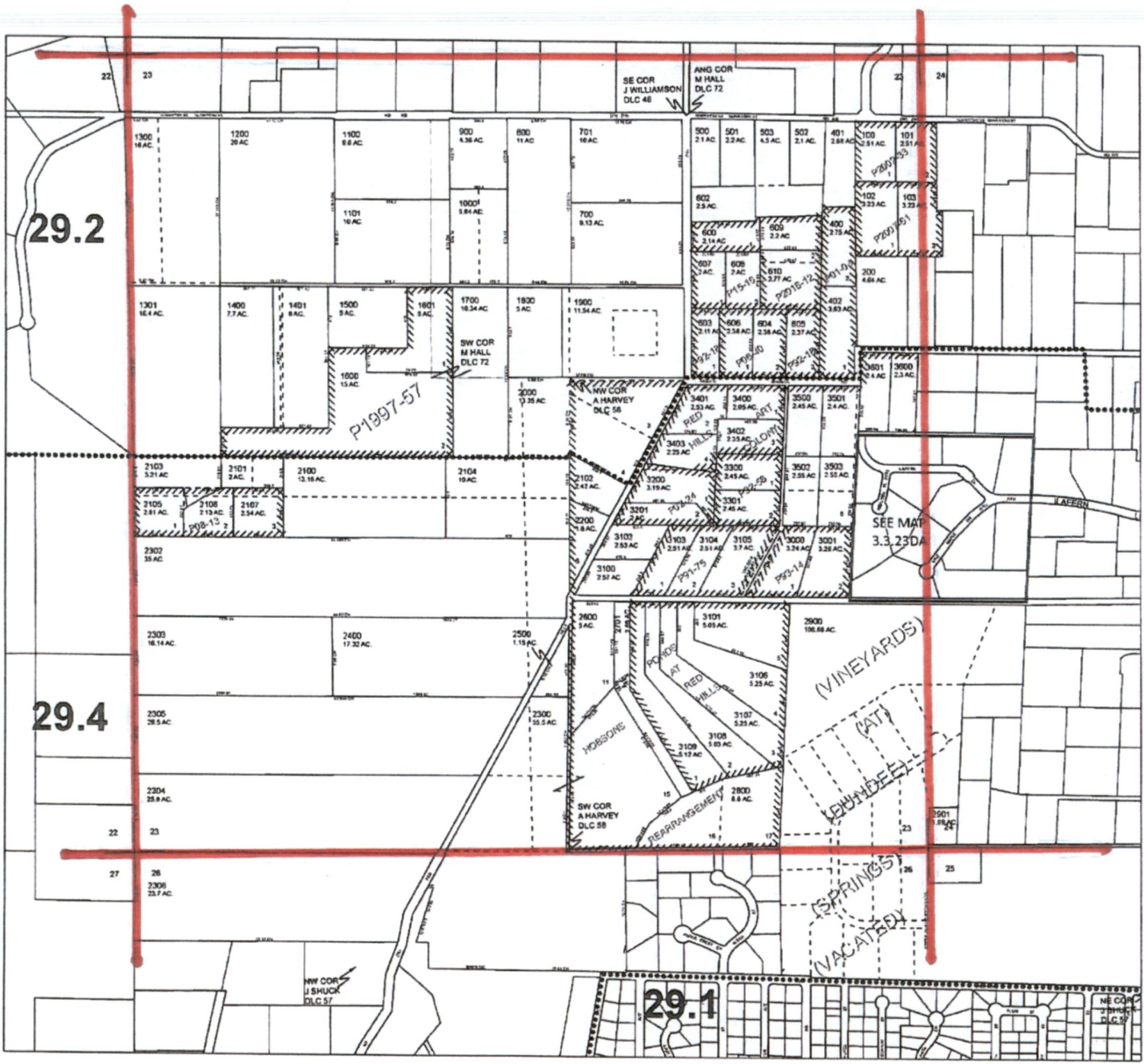
Iron Ball

R-00794



ASSESSMENT & TAX
CARTOGRAPHY

SECTION 23 T.3S. R.3W. W.M.
YAMHILL COUNTY OREGON
1" = 400'



- CANCELLED TAXLOTS
- 2700
 - 2301
 - 1102
 - 601
 - 300
 - 2902
 - 2903
 - 2904
 - 2905
 - 2906
 - 2907
 - 2908
 - 2909
 - 2910
 - 2911
 - 2912
 - 2913
 - 2914

RECEIVED
JAN 21 2020
OWRD

DATE PRINTED: 6/27/2017

This product is for Assessment and Taxation (A&T) purposes only and has not been prepared or is suitable for legal, engineering, surveying or any purposes other than assessment and taxation.

P-00714