

T. 30 S. R. 12 W. M.



NW 1/4, SW 1/4.

RECEIVED

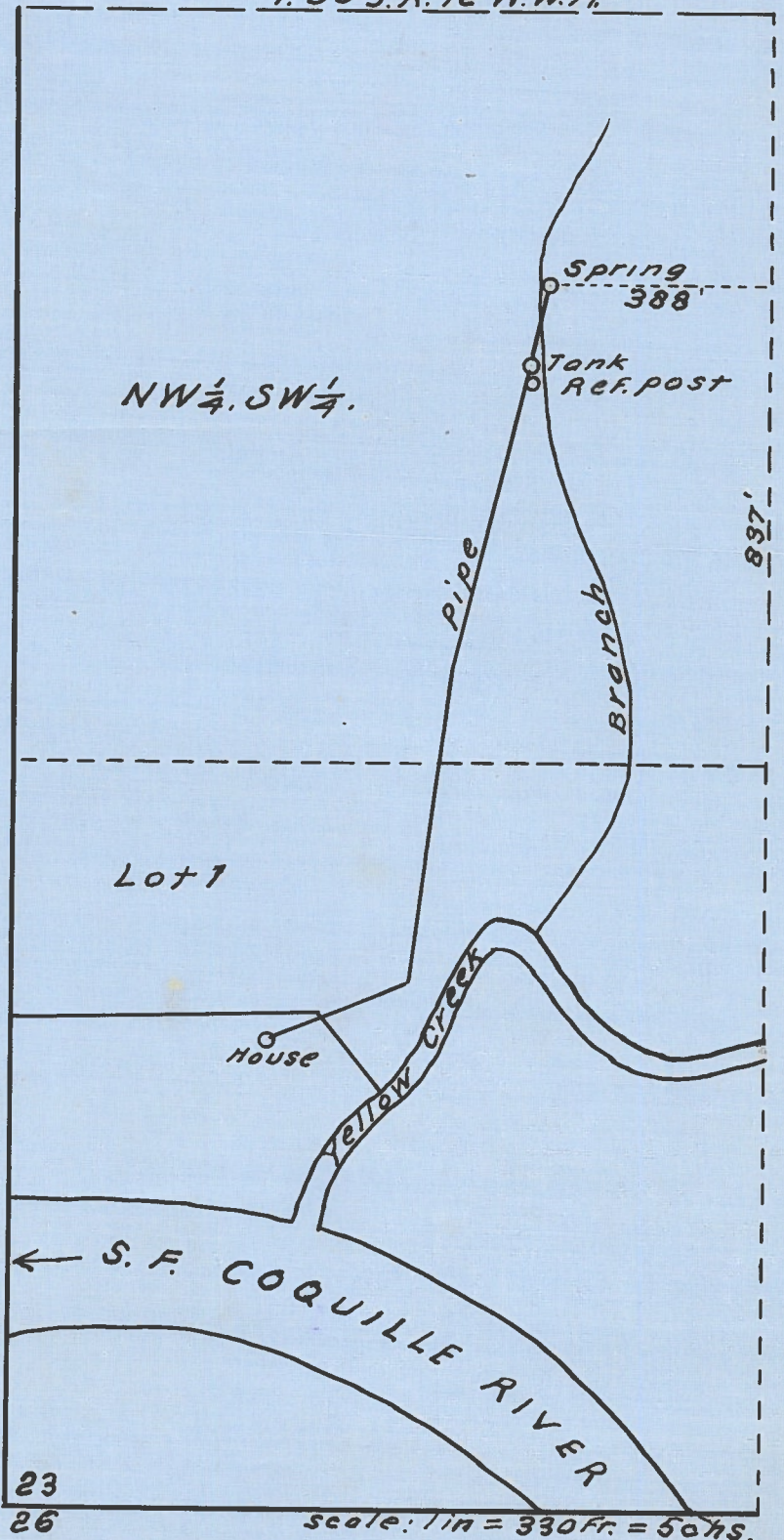
AUG 3 1948

STATE ENGINEER  
SALEM, OREGON

Map accompanying  
application of  
Julio G. Howard  
to appropriate water.

Application No. 23336

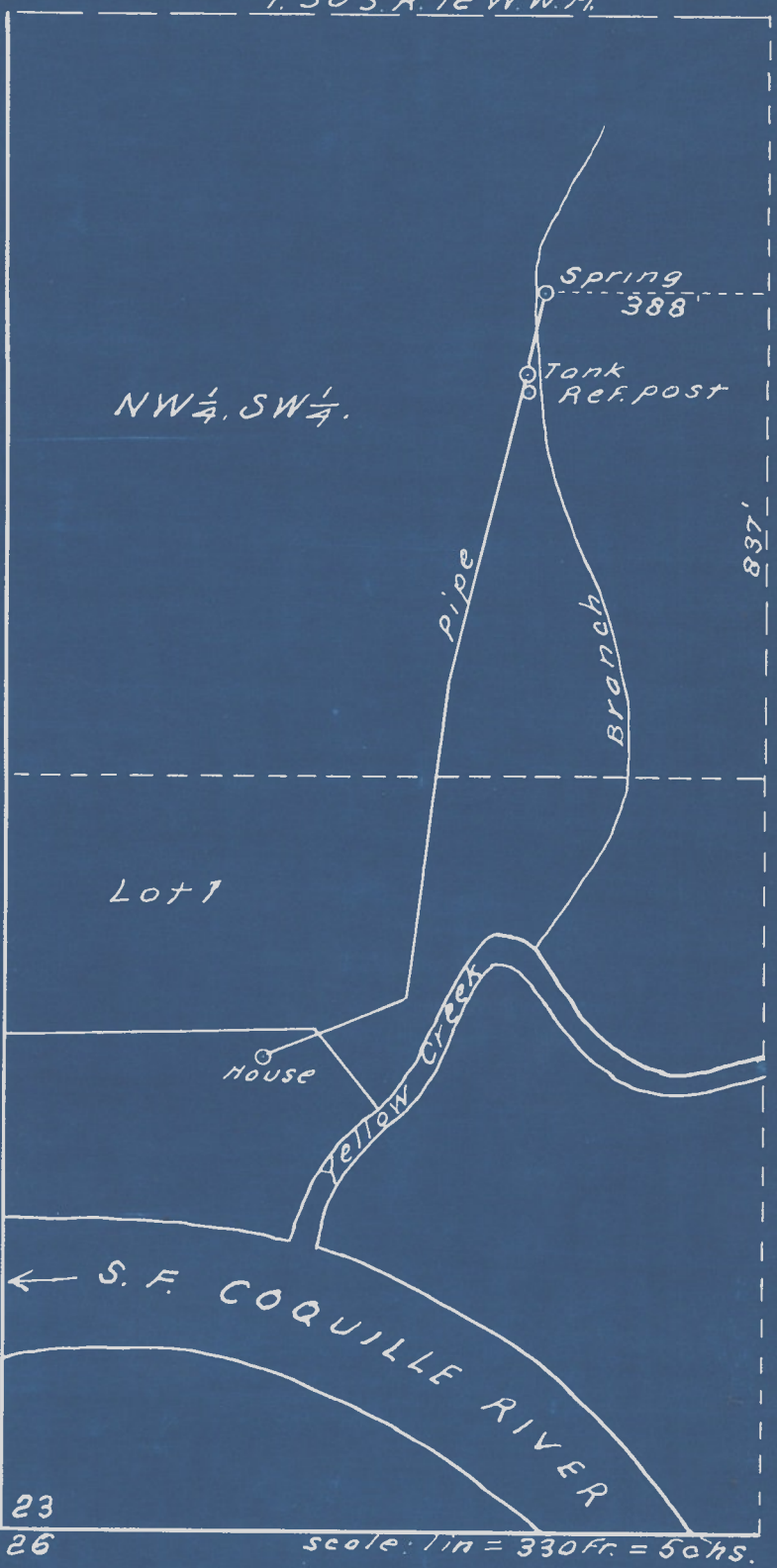
Permit No. 18444



I, J. N. Gearhart, of Myrtle Point, Oregon, do hereby certify that this map was made from notes taken during an actual survey made by me on April 24, 1948, and that it correctly represents the works described in the accompanying application together with the location of streams in the immediate vicinity.

J. N. Gearhart  
Oregon No. 183

T. 30 S. R. 12 W. M.



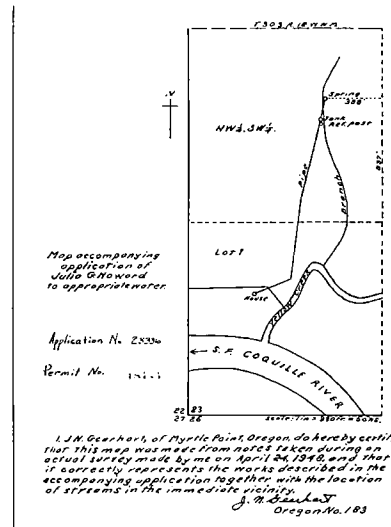
Map accompanying application of Julio G. Howard to appropriate water.

Application No. 23336

Permit No. 18444

I, J. N. Gearhart, of Myrtle Point, Oregon, do hereby certify that this map was made from notes taken during an actual survey made by me on April 24, 1948, and that it correctly represents the works described in the accompanying application together with the location of streams in the immediate vicinity.

J. N. Gearhart  
Oregon No. 183



I, J. M. Gearhart, of Myrtle Point, Oregon, do hereby certify that this map was made from notes taken during an actual survey made by me on April 24, 1916, and that it correctly represents the works described in the accompanying application together with the location of streams in the immediate vicinity.

J. M. Gearhart  
Oregon No. 103

Copy