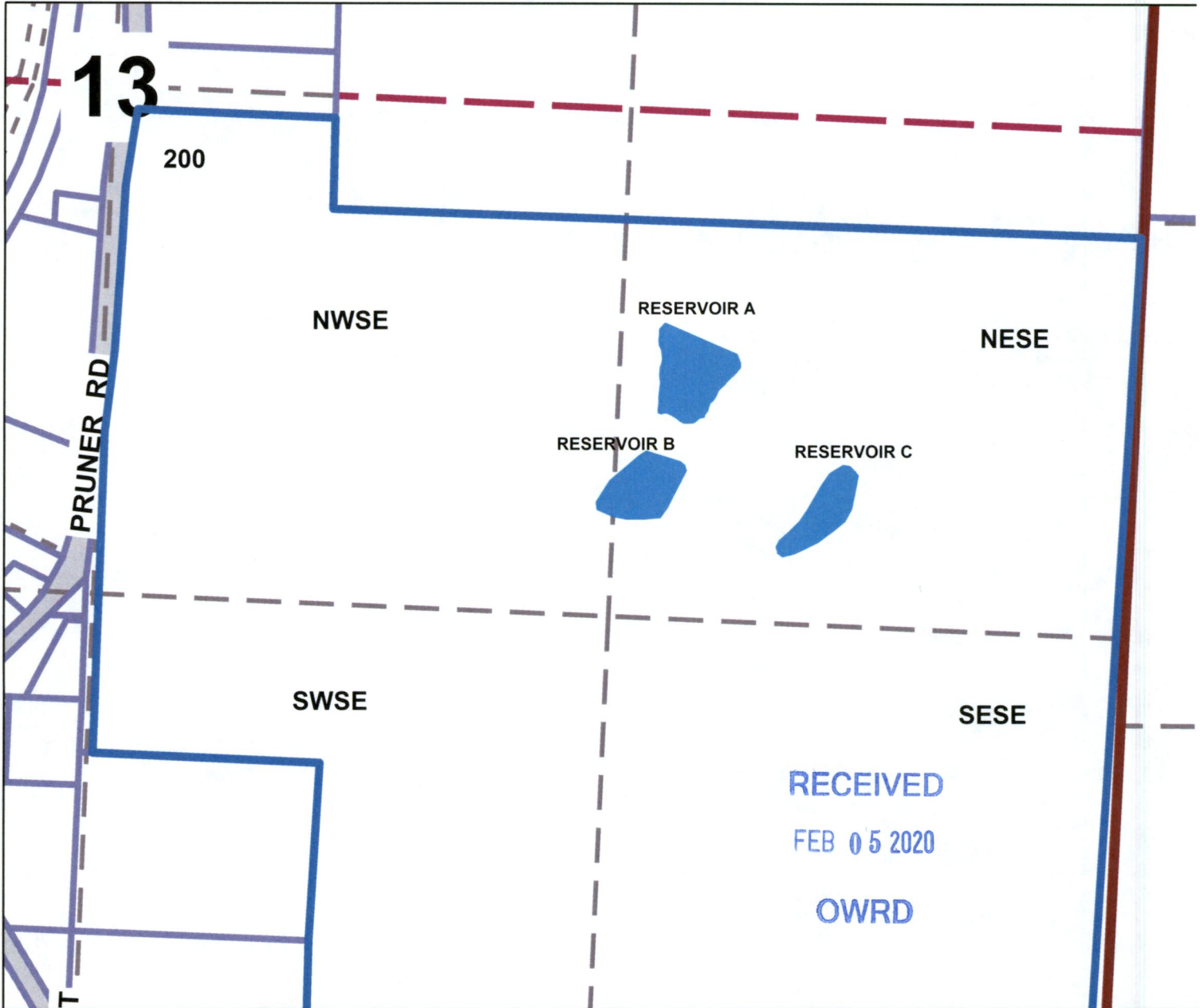




Hausotter Application Map
T.30S. R.6W. Section 13
Douglas County
Scale: 1" = 400'



Reservoir A is 615 ft South and 1540 ft East from the Center of Section 13

Reservoir B is 975 ft South and 1405 ft East from the Center of Section 13

Reservoir C is 915 ft South and 1900 ft East from the Center of Section 13

The purpose of this map is to identify
the location of a water right.
Not intended to show property ownership.

R-08801

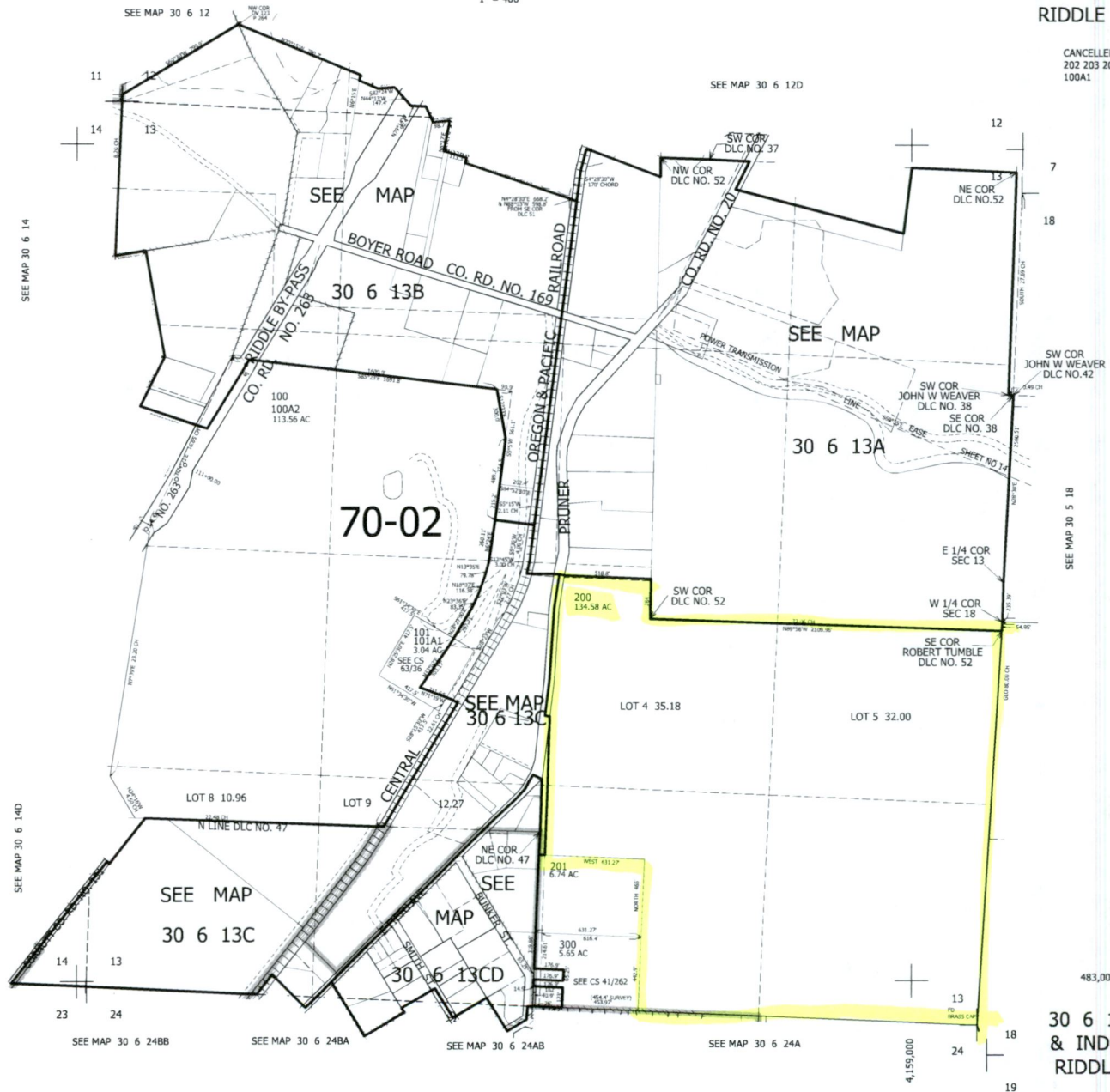
THIS MAP WAS PREPARED FOR ASSESSMENT PURPOSE ONLY.

SEC.13 T30S. R.6W. W.M. DOUGLAS COUNTY 1" = 400'

REVISED ON 6-3-13

30 6 13 & INDEX RIDDLE

CANCELLED 202 203 204 100A1



RECEIVED

FEB 05 2020

OWRD

R-000001