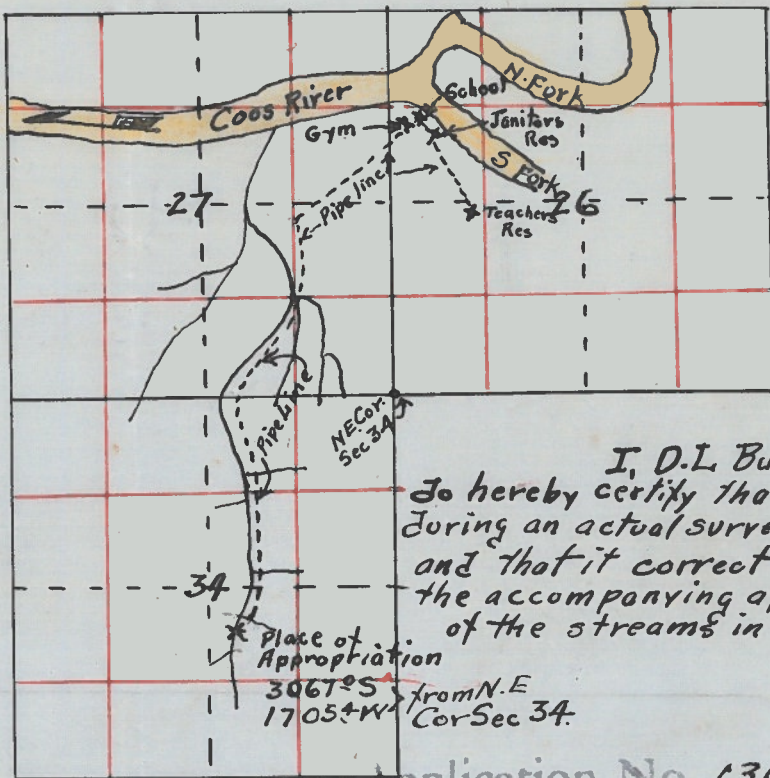


MAP

To Accompany Application for a Permit
To Appropriate Water
School District #36 Coos County ORE
Sec 34, Twp 25 S. R. 12. W.



N
S
Scale
one inch = 1/2 mile



I, D. L. Buckingham, of Marshfield, Coos Co. Ore.
do hereby certify that this map was made from notes taken
during an actual survey made by me Sept. 17-18 and Oct 3 1929
and that it correctly represents the works described in
the accompanying application together with the location
of the streams in the immediate vicinity

D. L. Buckingham

Application No. 13075
Permit No. 9319