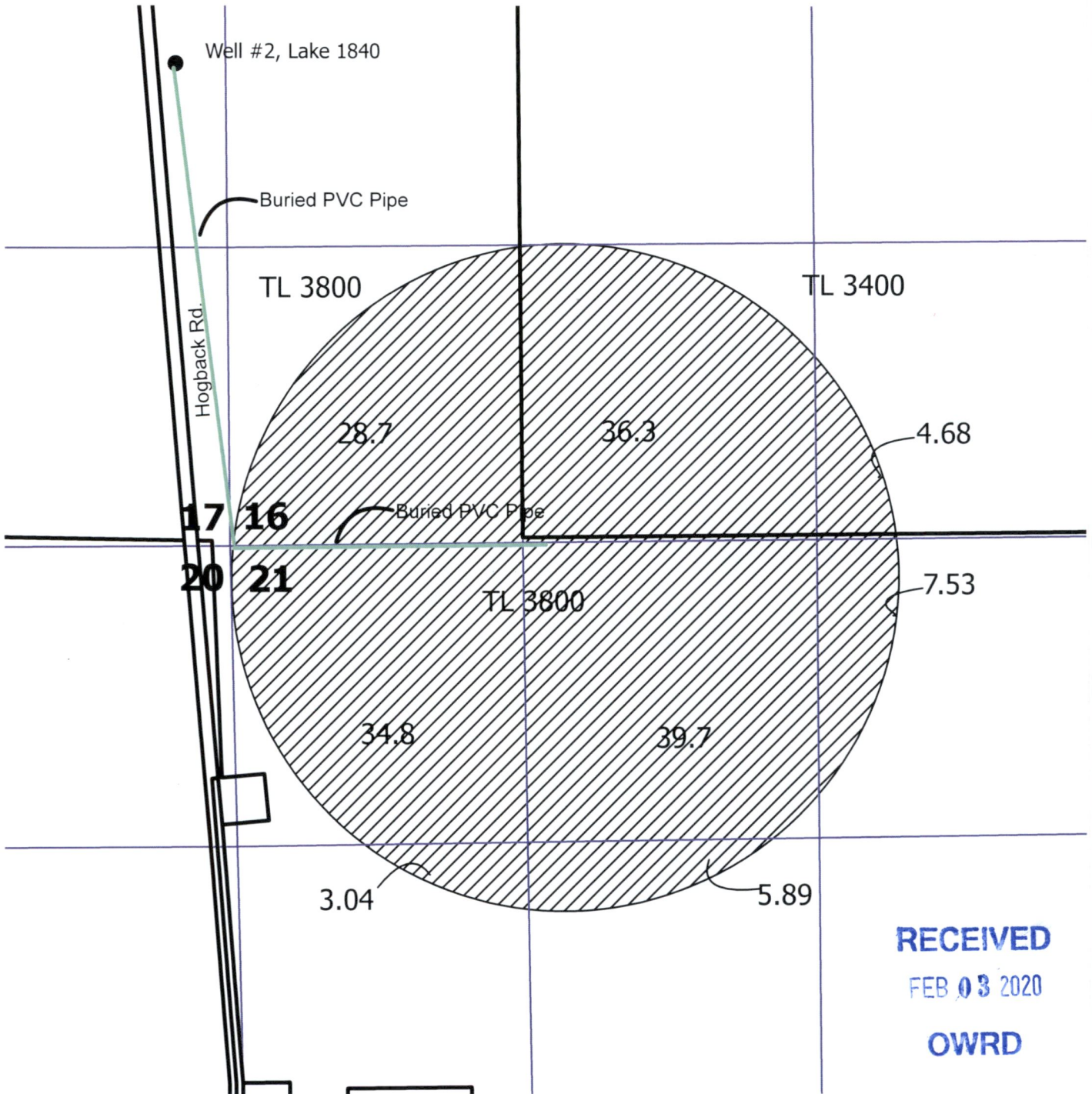
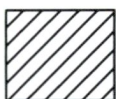


Fitzgerald Ranch Inc.

Tax Lots 3400 & 3800
in Sections 16 & 21, Township 36 South, Range 24 East W.M.
Lake County, Oregon



RECEIVED
FEB 03 2020
OWRD

 160.7 Acres of Primary Irrigation
From Well #2, As Shown

● Well # 2, Lake 1840, located in the NE 1/4/ of the SE 1/4 Section 17 & 2145' North and 245' West from the SE corner Section 17.



1 inch = 660 feet