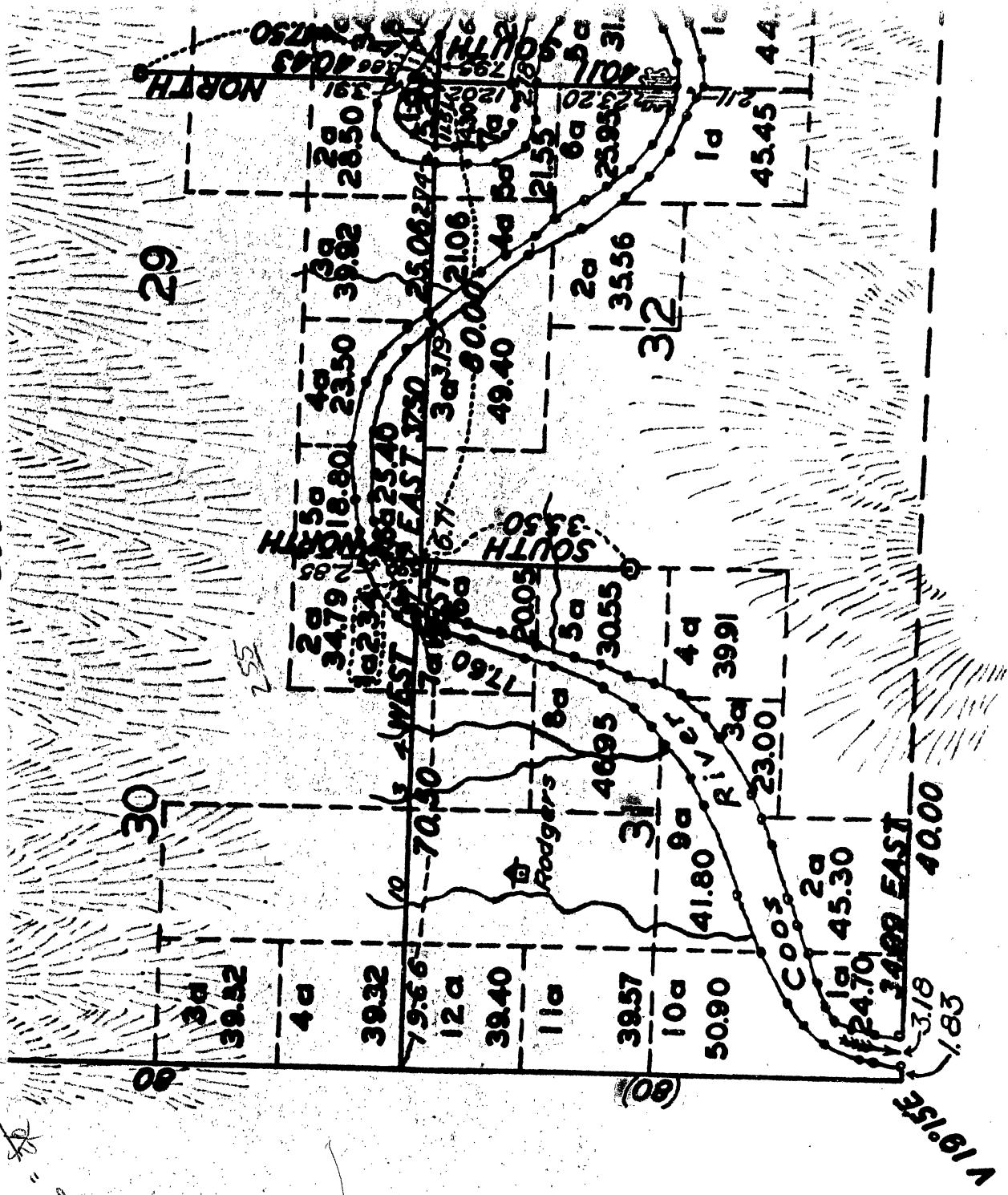


25S-11W

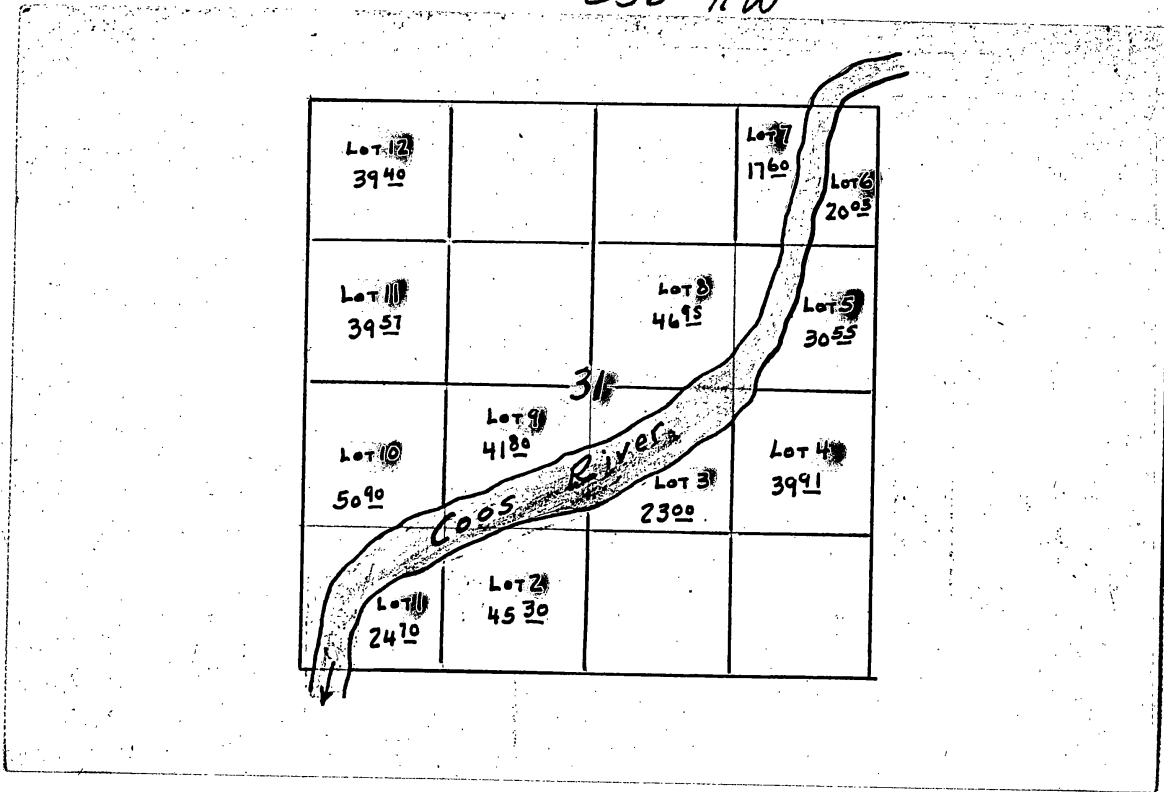
$\frac{82.5}{79.76} = 1.034$
 $\frac{20.3}{19.66} = 1.032$
 $\frac{2.6}{2.55} = 1.02$
 $\frac{20.7}{20} = 1.035$
 $\frac{11.2}{10.84} = 1.03$



1937

Contractors	Contract		Amount Surveyed		Commenced	Comp
	No	Date	Miles	Chains Links		
AR. Flint & LL Williams	151	May 23, 1937				

255-11W



STATE FOREST

Bessey RIVER

Rogers

COORS

FORK

Mile 10

JEEP

TR 1900

Creek

JEEP

TRAIL

x 174

31

32

6

1004

600

800

800

600

800

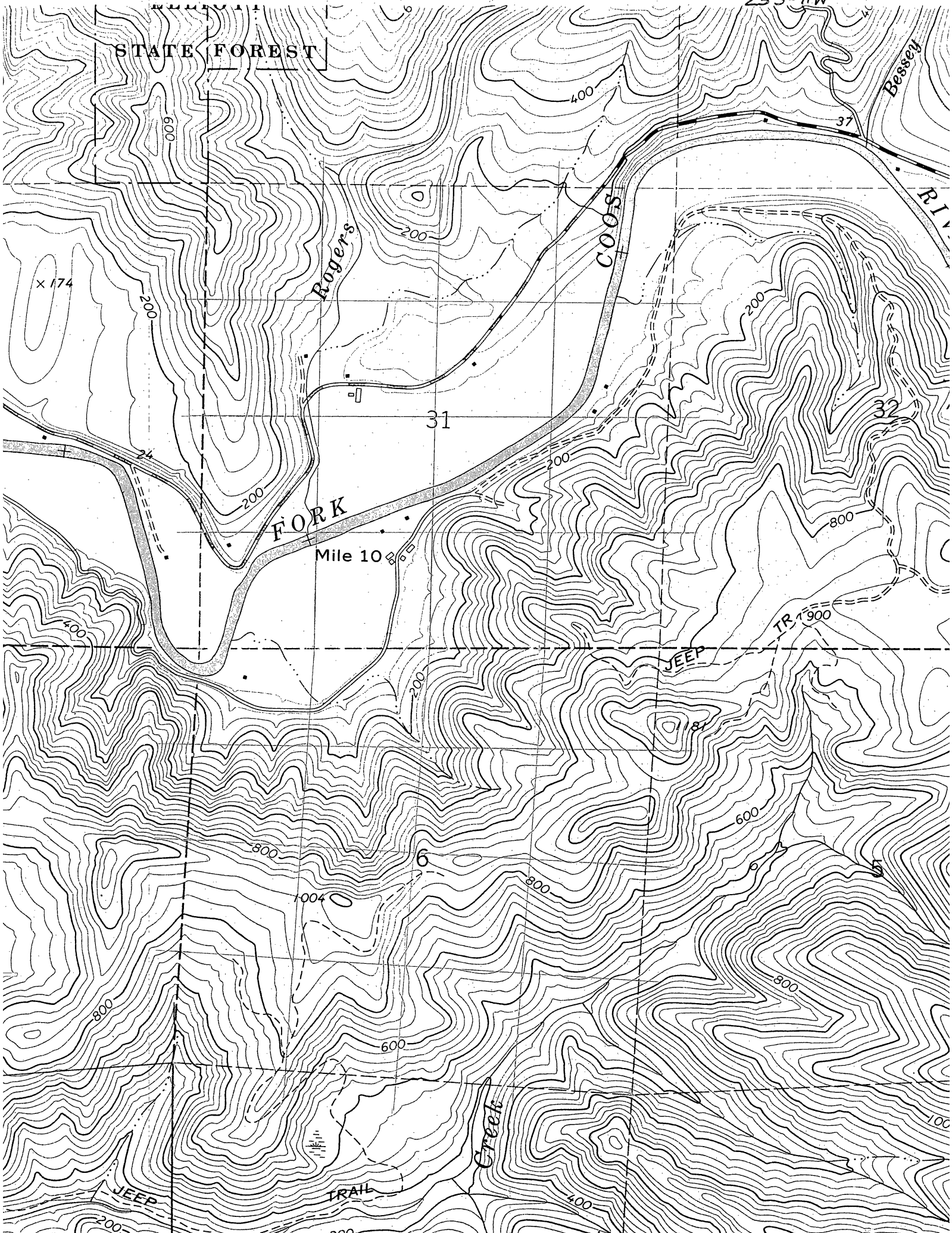
800

200

300

400

100



COOS

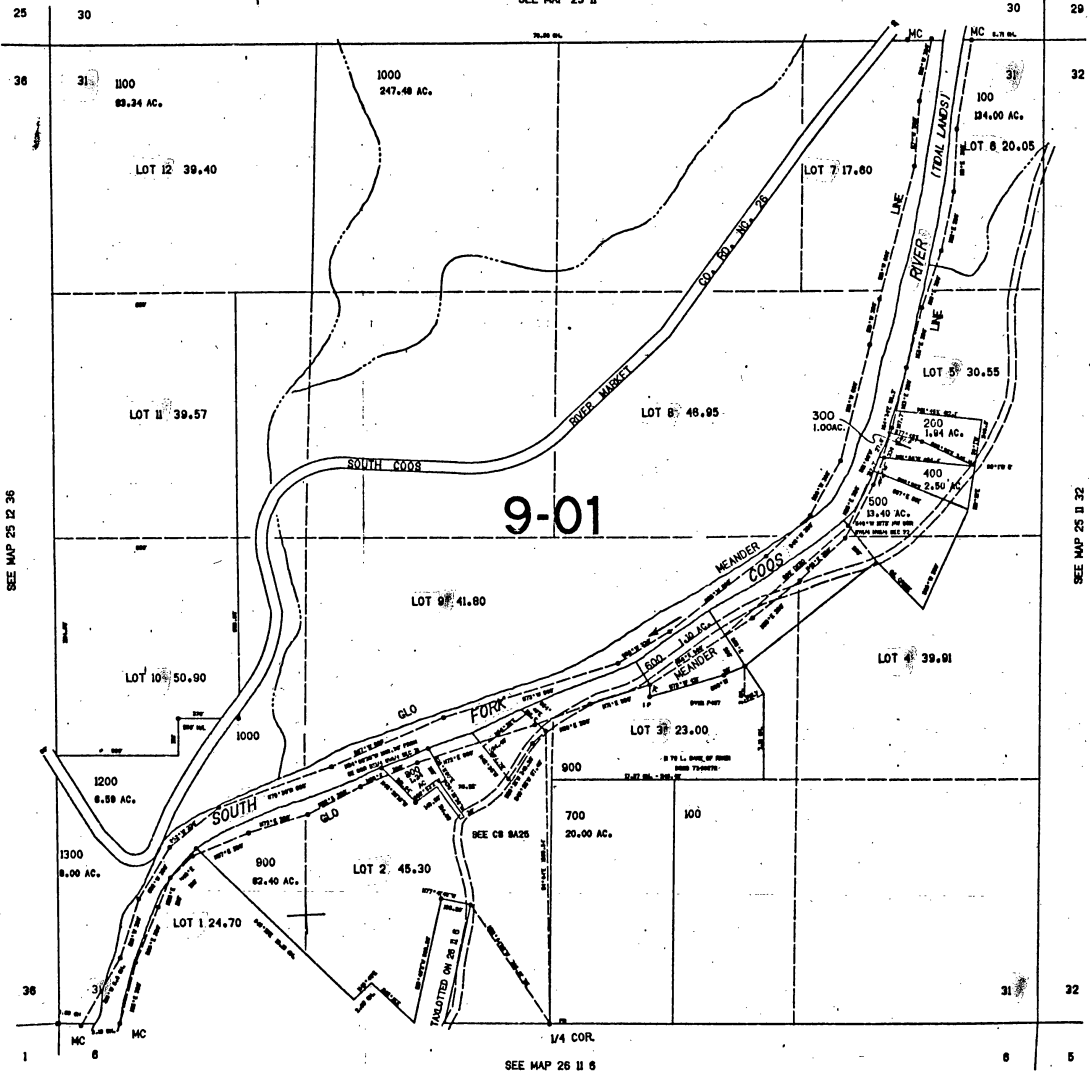
SECTION 31 T.25S. R.11W. W.M.
COOS COUNTY
1" = 400'

25 17 31

THIS MAP WAS PREPARED FOR
ASSESSMENT PURPOSE ONLY.

SCALE 1" = 4000'

SEE MAP 25 II



9-01

LAYOUT TRACED CHECKED

635.000

20.49

26S-11W



Scale in Chains

36

Sec. 31

Sec. 32

6000

N. 0° 24' E.

COOS RIVER

$$\frac{81.20}{80.58} = \frac{20.15}{20.15}$$

ENLARGED GRAM

N. 84° 42' W. L.C. 8.57
S. 8° 12' W. 2.15

S. 89° 09' W.

80.58

N. 6° 12' E. 33.95

N. 0° 22' E. 73.87

N. 6° 12' E. 33.95

N. 81° 09' W.

Sec. 6

N. 87° 25' W.

Sec. 5

N. 30° 57' E.

N. 30° 12' E.

$$\frac{72.82}{73.87} = \frac{19.61}{19.96} = \frac{16.73}{16.98}$$

$$\frac{78.80}{79.78} = \frac{20.23}{20.48} = \frac{18.11}{18.34}$$

39.06 (19.58)

41.48

41.55

$$\frac{81.22}{80.54} = \frac{19.79}{19.68} = \frac{19.49}{19.38} = \frac{20.86}{20.74}$$

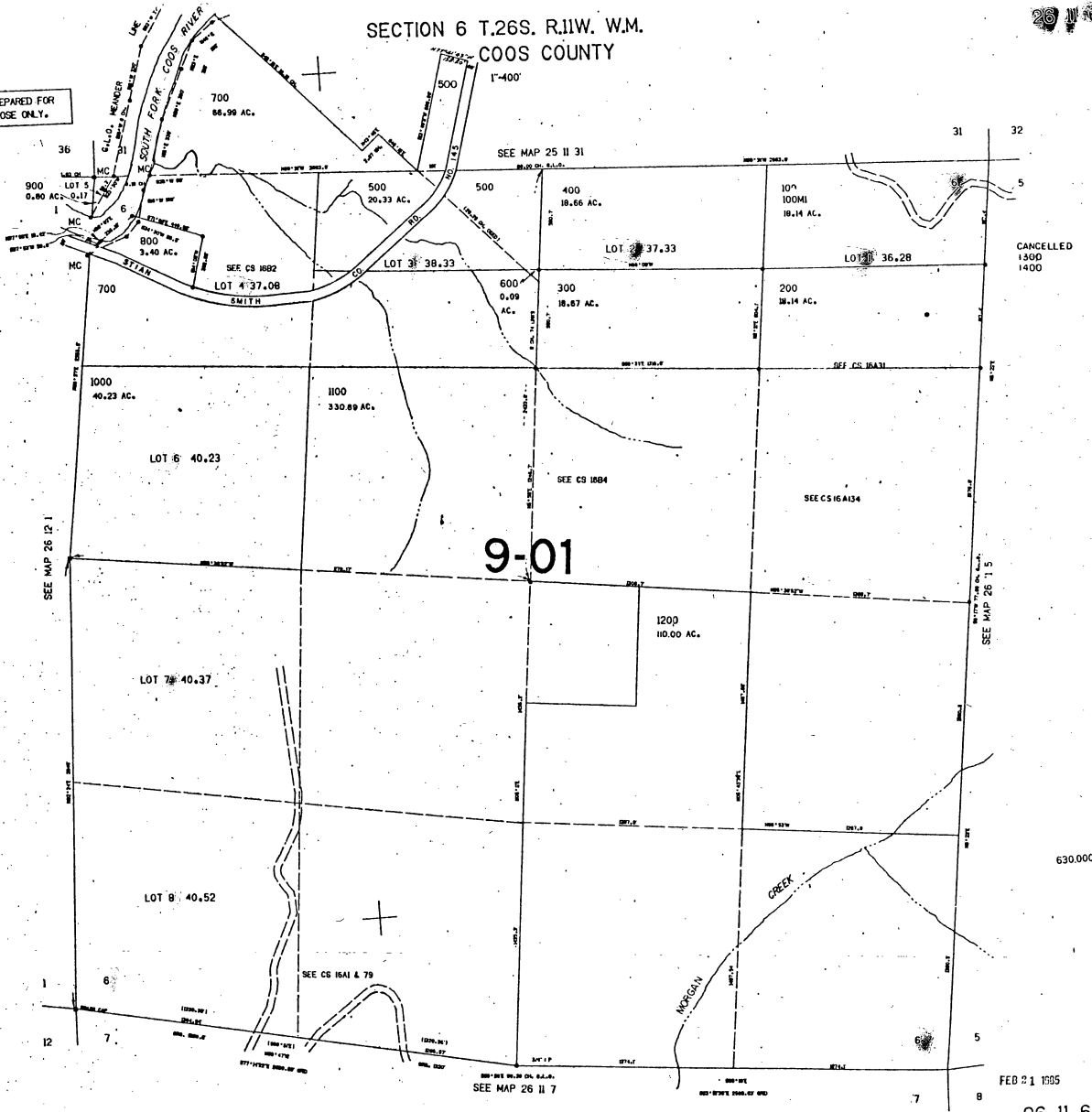
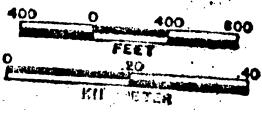
Line Tree

20.

SECTION 6 T.26S. R.11W. W.M.
COOS COUNTY

THIS MAP WAS PREPARED FOR
ASSESSMENT PURPOSE ONLY.

SCALE 1:9600



9-01

FEB 21 1995

26 11 6

LAYOUT TRACED

CANCELLED
1300
1400

SEE MAP 26 12 1

SEE MAP 26 11 7

SEE MAP 26 11 5