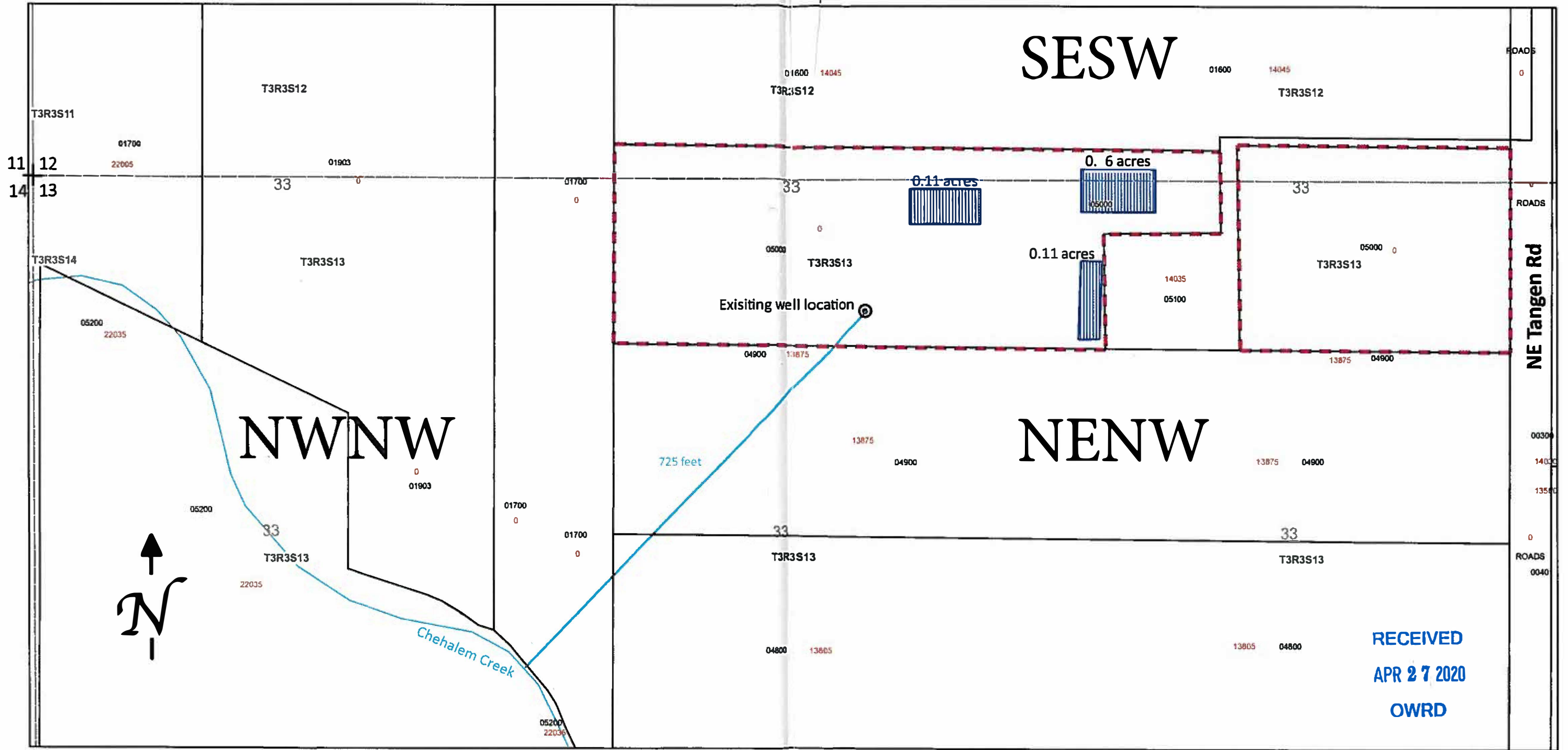


SECTION 13 T.3S R.3W. W.M.




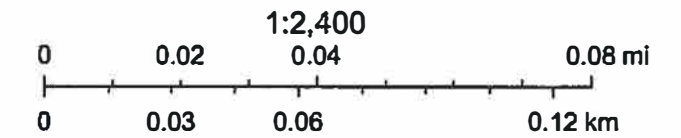
April 18, 2020

Water Rights Application Map
 Alan Akins
 Tax Lot 3S 3W S13 5000

 Tax Lot T3S R3S S13 5000

 Areas proposed for Primary irrigation (0.82 acres total)

 Existing well, 1230ft east and 193ft south from the NW corner of Section 13.
 Approximate GPS coordinates: 45,317100, -123.007129



Esri, HERE, Garmin, (c) OpenStreetMap contributors, and the GIS user community