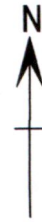
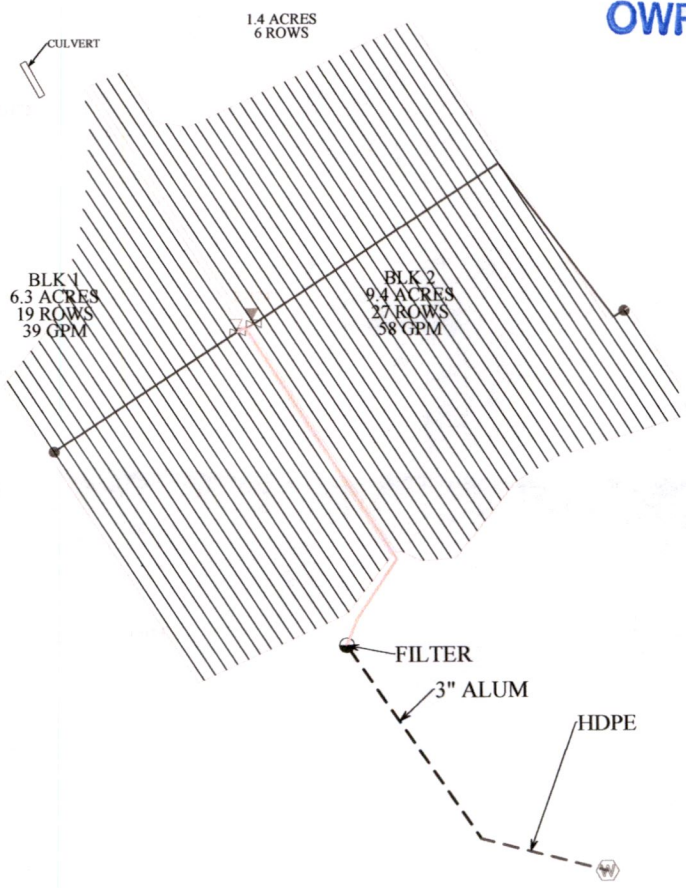



NOTES:
 CROP: HAZELNUTS
 ACRES: +/- PHASE I = 15.7
 SPACING: 20'
 APP. DEVICE: 20MM .42 GPH @30"
 GPM/ACRE: 6.1



1.4 ACRES
 6.5 ACRES
 1.4 ACRES
 1.4 ACRES 6 ROWS
 RECEIVED
 MAY 08 2020
 OWRD



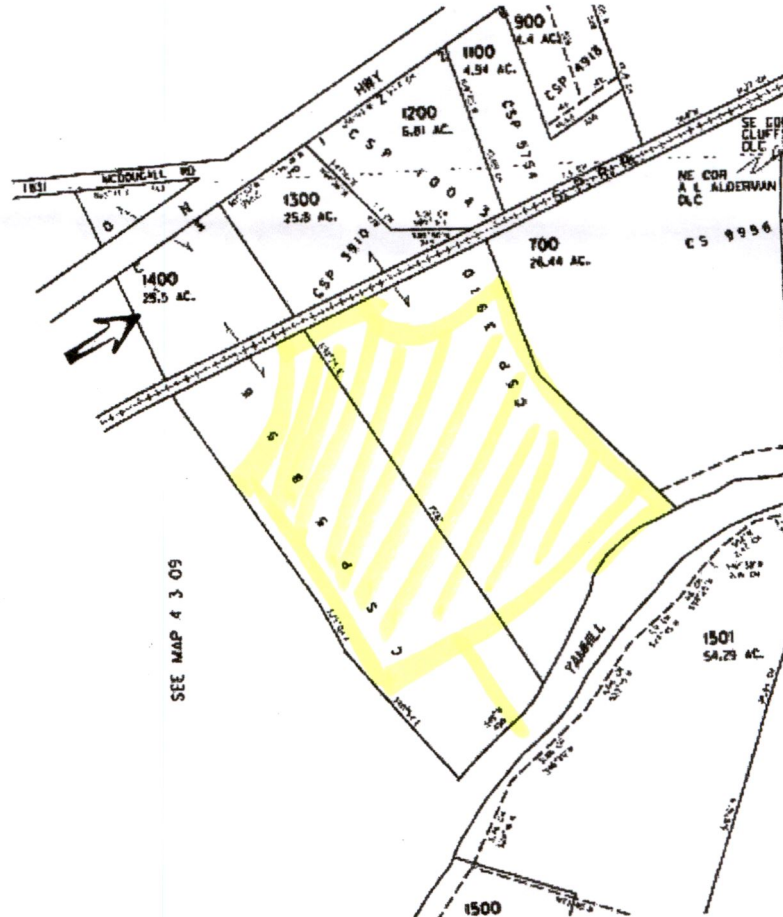
<ul style="list-style-type: none"> — PC 20mm-.42gph-30" — 2" Class 200 IPS SW PVC Pipe — 2 1/2" Class 160 IPS SW PVC Pipe - - - ALUM - - - HDPE 	<ul style="list-style-type: none"> ⊠ 2" Brass Ball Valve ▽ 1" COMBO AIR VENT ▲ 1" GUARDIAN AIR RELIEF ● 2" FLUSH VALVE ASSEMBLY ⊙ 2" AUTO FILTER ⊕ Water Supply 	<p>Clearwater Irrigation Supply</p> 	Designer: ANDREY KAYA
			Date: 4/24/2020
			Scale: 1" = 200'
			File: KUNZE HAZELNUTS



First American



This map is furnished for illustration and to assist in property location. The company assumes no liability for any variation in dimensions by location ascertainable by actual survey



RECEIVED

MAY 08 2020

OWRD

