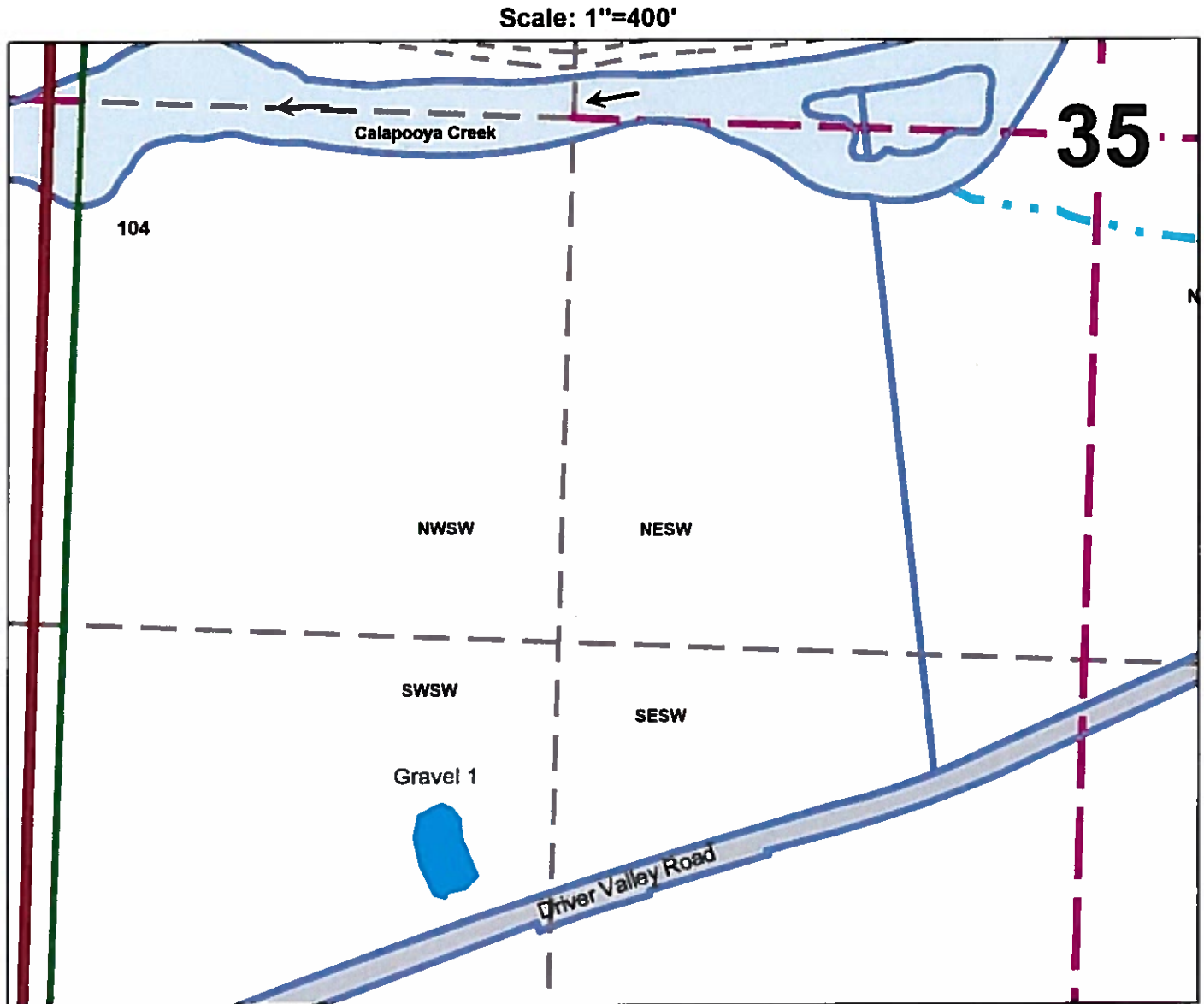




**Application Map
Baxter
Douglas County
T.24S. R.5W. Section 35**

**RECEIVED
JUN 01 2020
OWRD**



Reservoir(Gravel1) is located 1871 ft South and 1598 ft West from the Center of Section 35

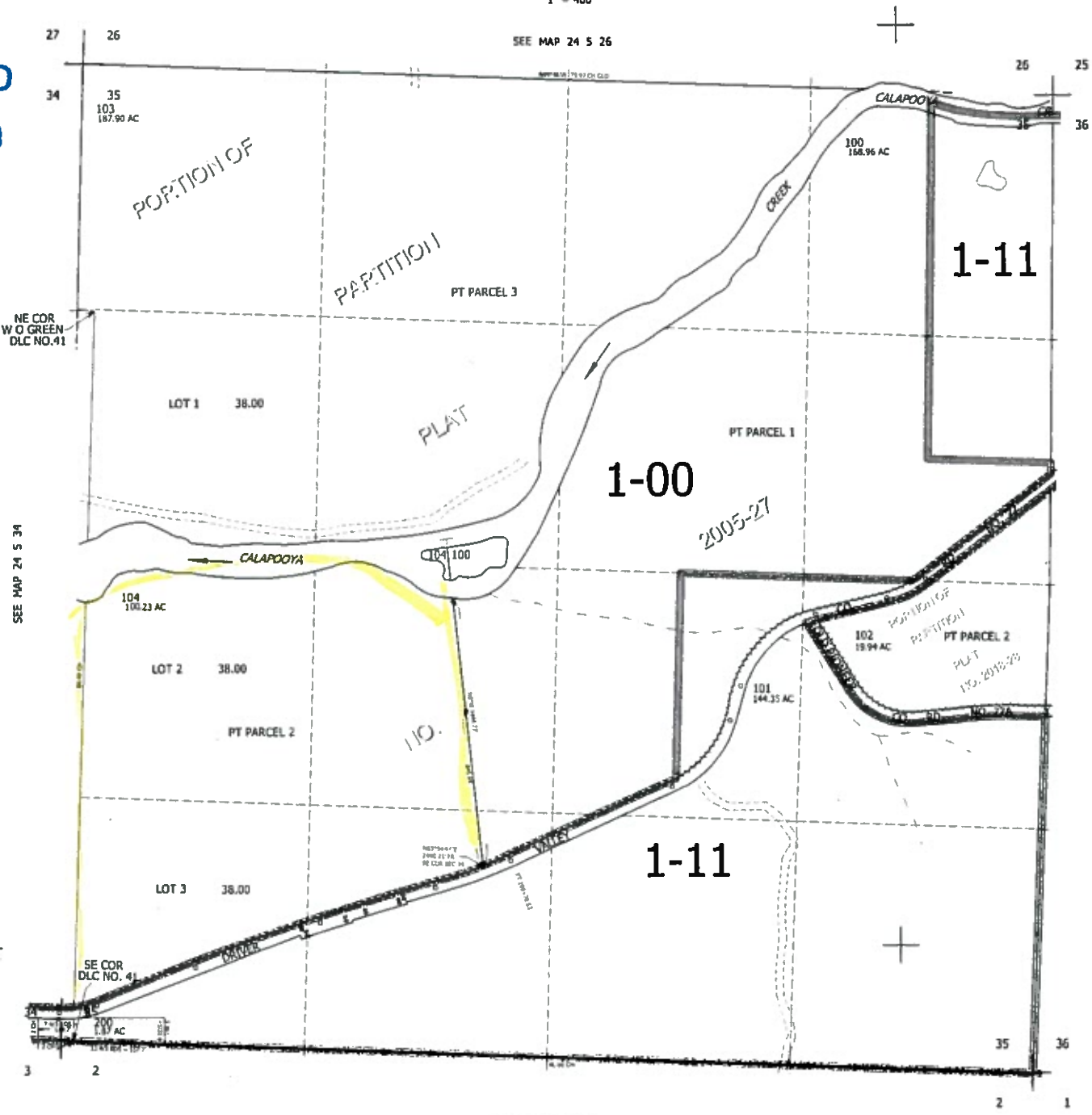
THIS MAP WAS PREPARED FOR ASSESSMENT PURPOSE ONLY.

SEC.35 T.24S. R.5W. W.M.
DOUGLAS COUNTY
1" = 400'

REVISED ON
10-18-18

24 5 35

RECEIVED
JUN 01 2020
OWRD



SEE MAP 25 5 2

24 5 35