



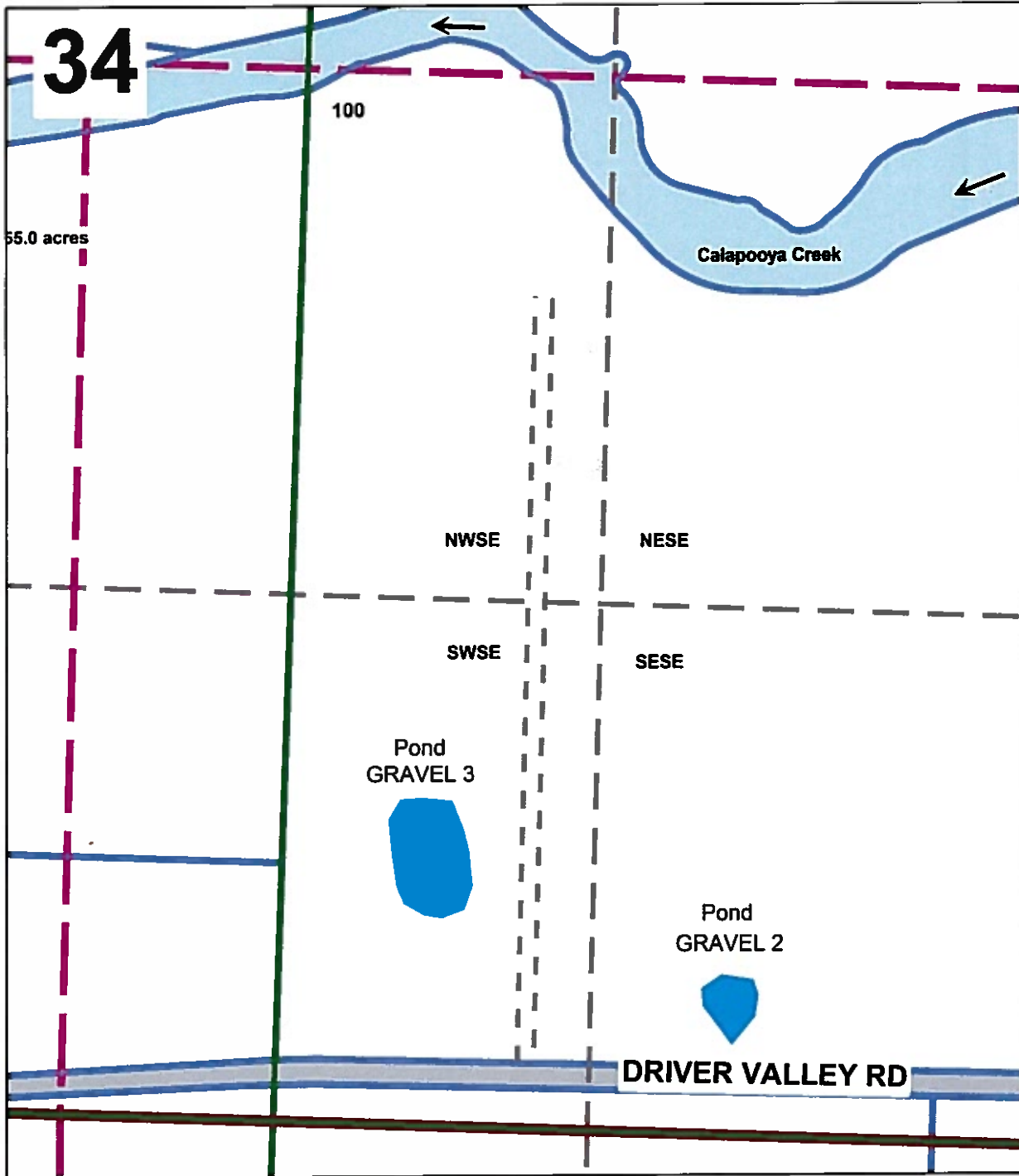
**Application Map
Baxter
Douglas County
T.24S. R.5W. Section 34**

RECEIVED

JUN 01 2020

OWRD

Scale: 1"=400'



Gravel 3 is 1975' South and 930' East from the Center of Section 34.

Gravel 2 is 2325' South and 1635' East from the Center of Section 34.

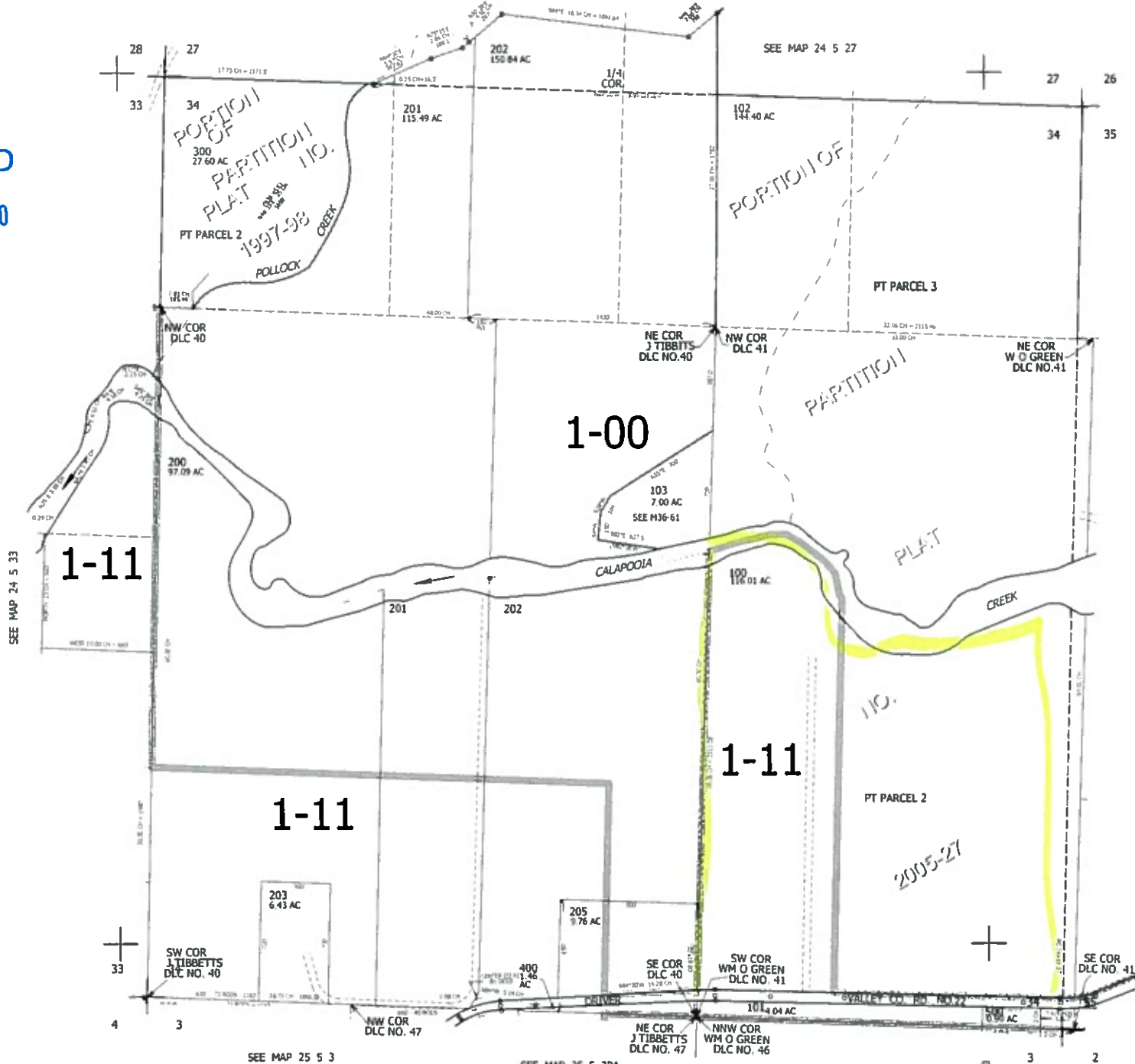
THIS MAP WAS PREPARED FOR ASSESSMENT PURPOSE ONLY.

SEC.34 T.24S. R.5W. W.M.
DOUGLAS COUNTY
1" = 400'

REVISED ON
11-20-07

24 5 34

RECEIVED
JUN 01 2020
OWRD



CANCELLED NOS
204 300M1

SEE MAP 24 5 35

661,000

SEE MAP 25 5 3

SEE MAP 25 5 3BA

SEE MAP 25 5 3

24 5 34