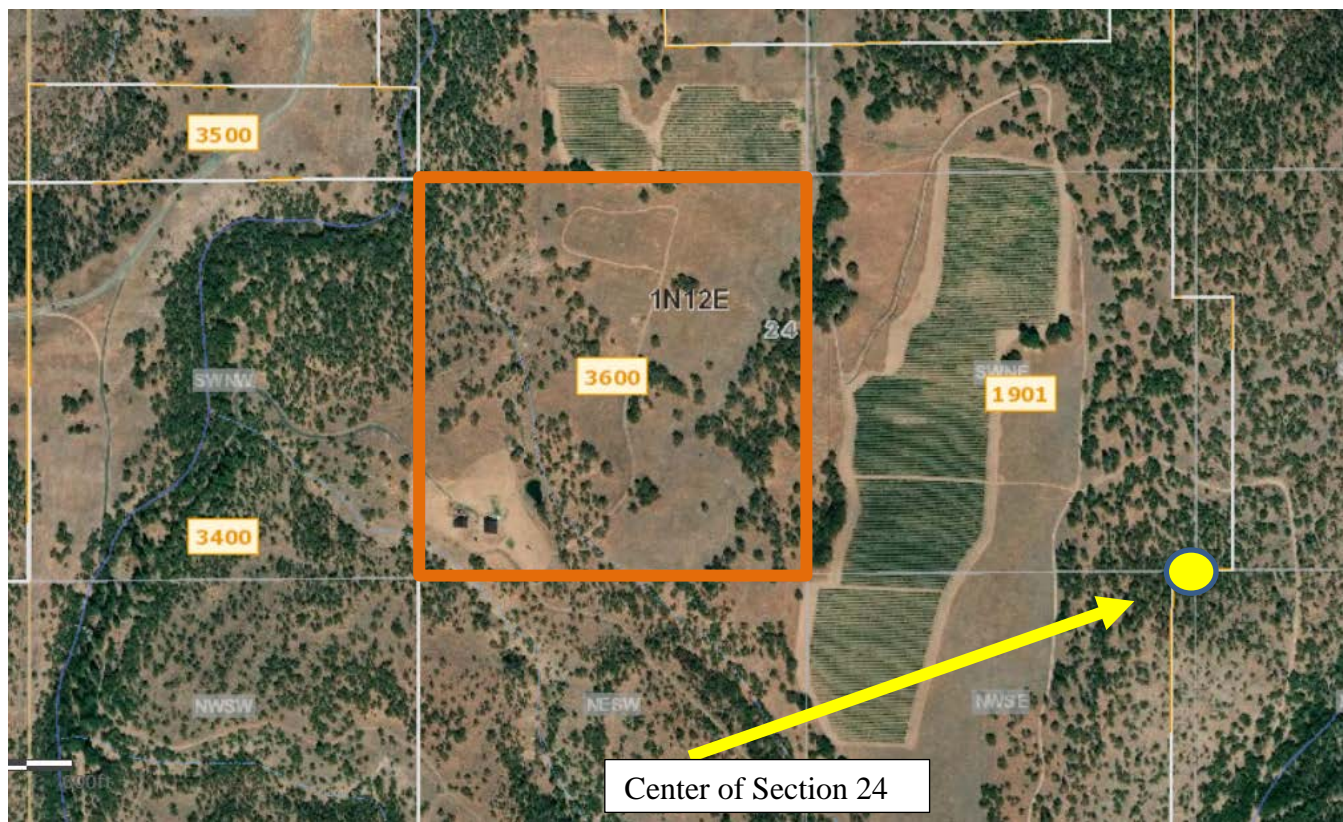
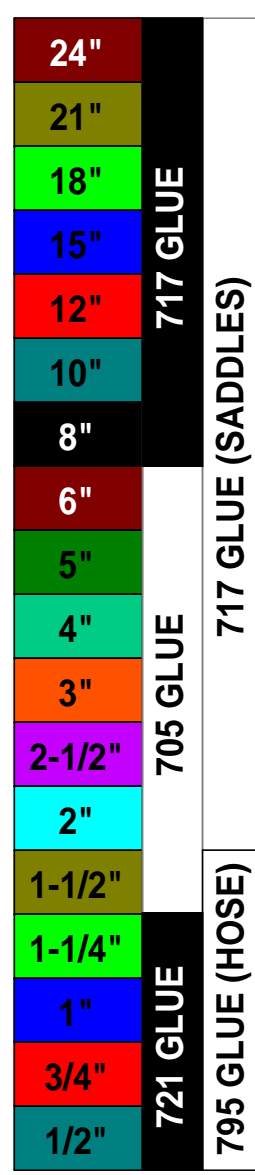


Overview Map:

Location: 1 North, 12 East, Section 24, SE NW, Tax Lot 3600





CROP: GRAPES  
PLANTED AREA: 9.9 EST. ACRES  
SYSTEM TYPE: DRIP SYSTEM ON WIRE  
VINE SPACING: 4' PLANT x 7.5' ROW

1/2" POLY TUBING WITH  
.5 GPH WPC EMITTERS SPACED  
EVERY 4' (14,111 EMITTERS ESTIMATED)

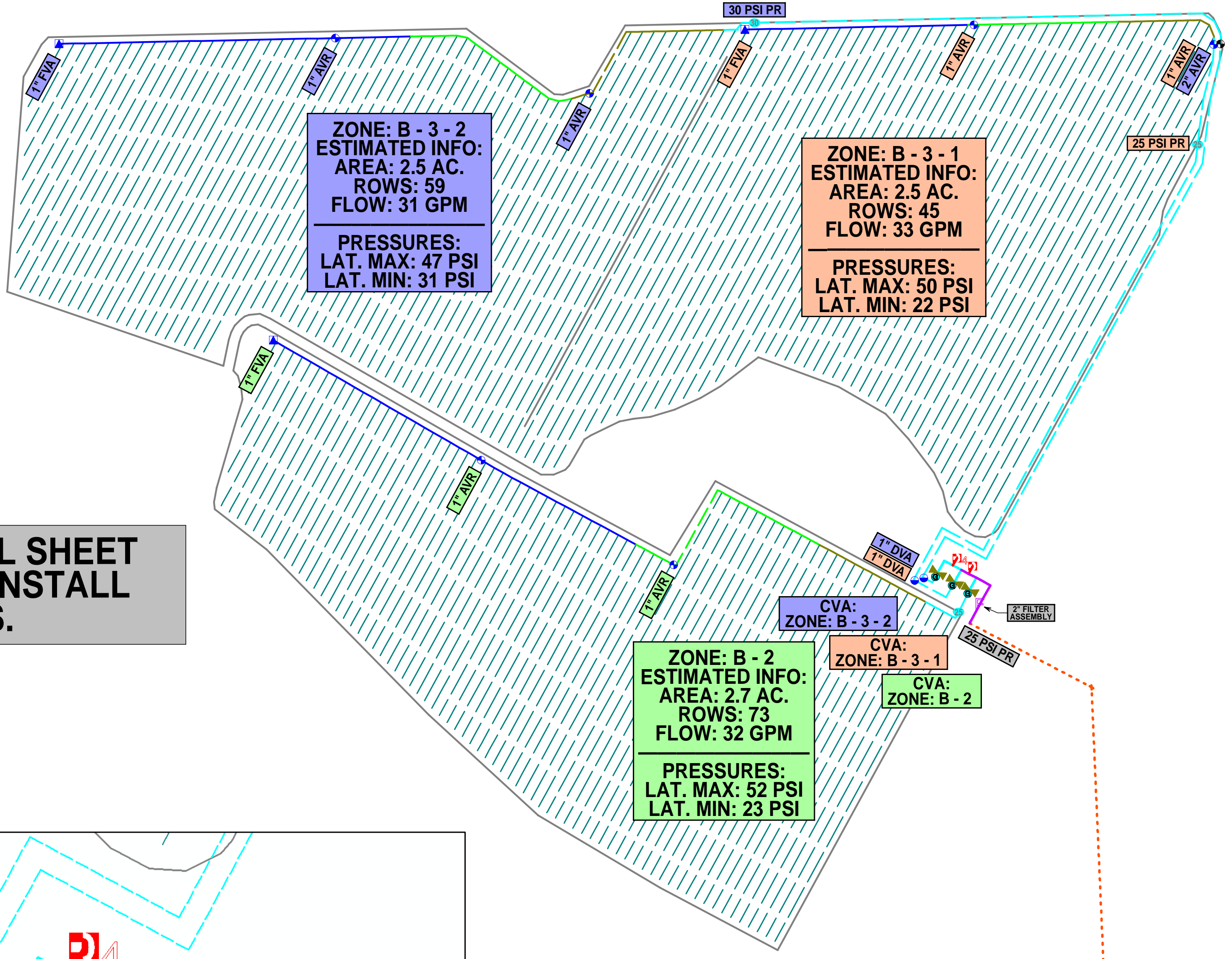
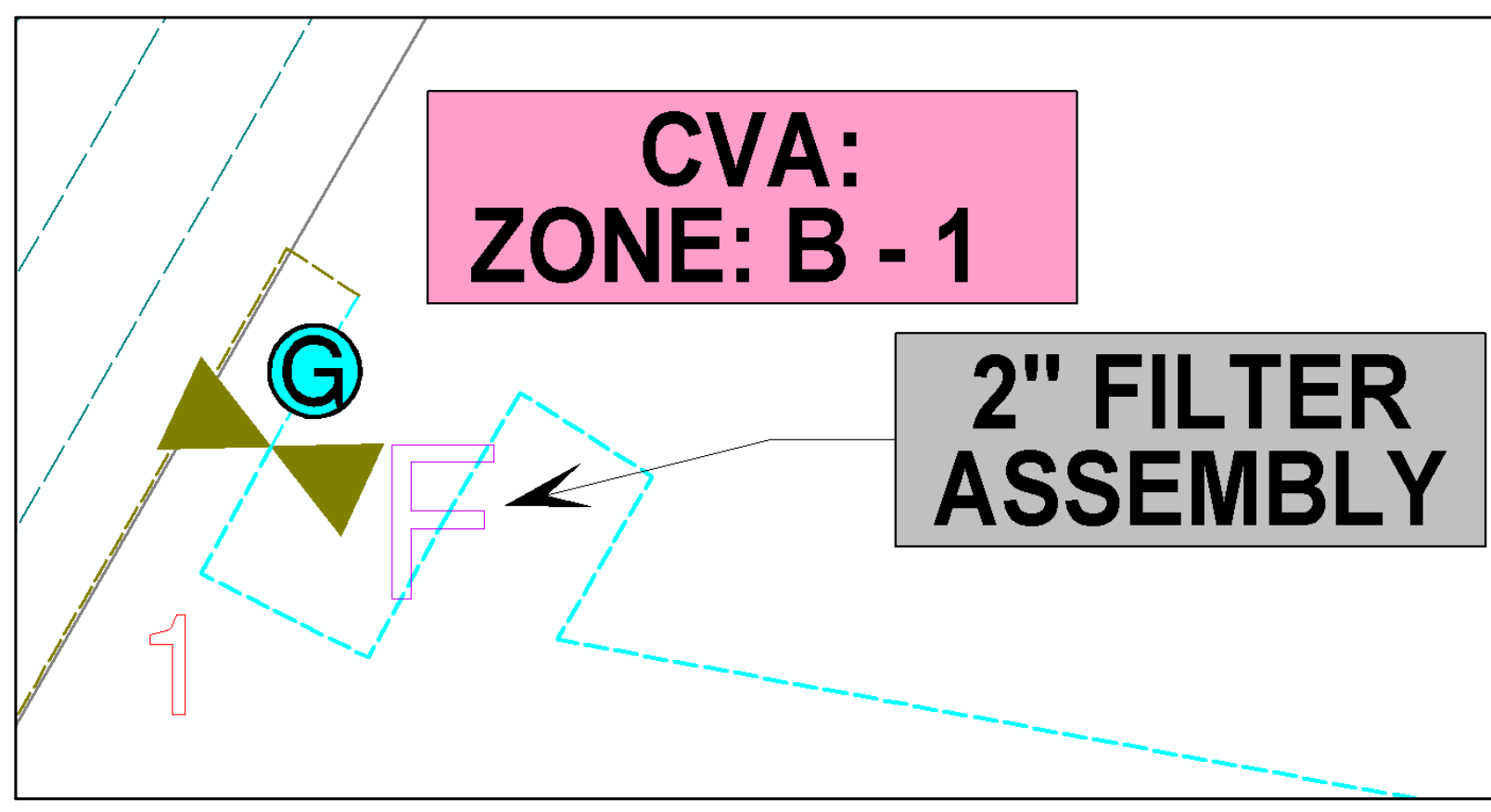
DRIP DATA AT 10-55 PSI:  
12.1 GPM/ACRE - 0.64"/DAY (.027"/HR.)

CUSTOMER REQUESTS 5 GAL PER PLANT  
PER WEEK (10 HOURS A WEEK PER ZONE)

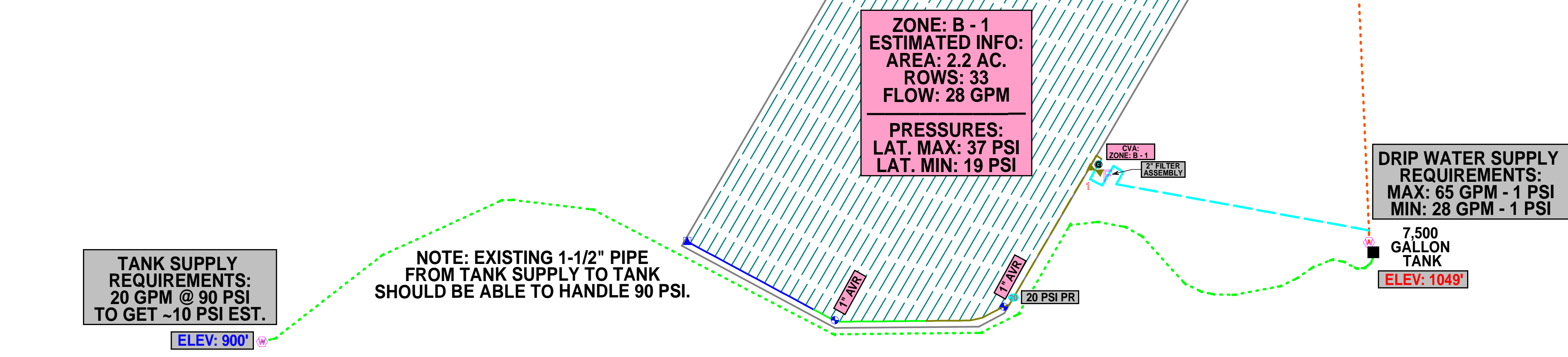
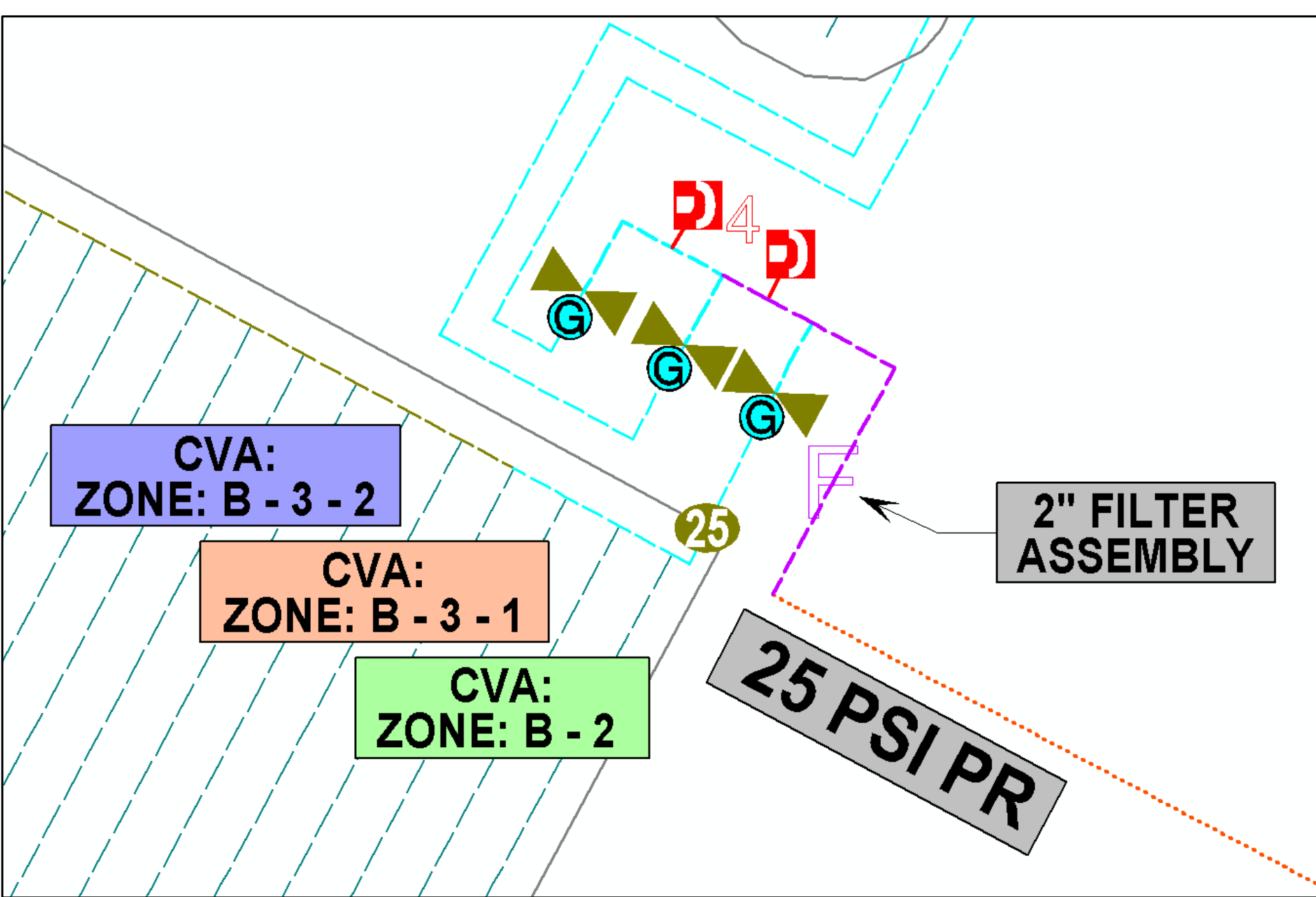
INCOMING (20 GPM):  
20GPMx60MIN = 1,200 GPH  
1,200 GPHx24 HRS = 28,800 GPD  
28,800 GPD x 7 DAYS = 201,600 GPW

REQUESTS 5 GALLONS PER WEEK  
PER PLANT; 10 HOURS A WEEK RUNTIME  
WITH .5GPH TO GET 5 GALLONS

OUTGOING:  
B-1 = 3,133 OUTLETS  
(3,133 x .5) x 10 HRS = 15,665 GPW  
B-2 = 3,674 OUTLETS  
(3,674 x .5) x 10 HRS = 18,370 GPW  
B-3-1 = 3,743 OUTLETS  
(3,743 x .5) x 10 HRS = 18,715 GPW  
B-3-2 = 3,560 OUTLETS  
(3,560 x .5) x 10 HRS = 17,800 GPW  
TOTAL OUTGOING = 70,550 GPW



**NOTE: SEE DETAIL SHEET  
FOR ASSEMBLY INSTALL  
SPECIFICS.**



**PIPE LEGEND**

- 1/2" POLY TUBING
- 3/4" CLASS 200 PVC PIPE
- 1" CLASS 200 PVC PIPE
- 1-1/4" CLASS 160 PVC PIPE
- 1-1/4" EXISTING PIPE (CL 125)
- 1-1/2" CLASS 160 PVC PIPE
- 2" CLASS 160 PVC PIPE
- 2-1/2" CLASS 160 PVC PIPE
- 3" EXISTING PIPE (CL 160)

**COMPONENT LEGEND**

- 1-1/2" NETAFIM NYLON VALVE (MEL/LAT)
- 1" FLUSH & DRAIN VALVE ASSEMBLY
- 1" AIR VENT RISER
- 1" DRAIN VALVE ASSEMBLY
- 2" AIR VENT ASSEMBLY (W/ 100# GAUGE)
- 2" AIR VENT RISER
- 2" NETAFIM #30 PRES. REG. (22-65 GPM)
- 2" NETAFIM #25 PRES. REG. (22-65 GPM)
- 2" NETAFIM #20 PRES. REG. (22-65 GPM)
- 2" DUAL DISC FILTER W/ CAAV - 120M
- NETAFIM WPC / .5 GPH EMITTER
- DEMAND POINT FOR TANK FILL 20.0 10.0
- NELSON TWIG CONTROL MODULE (1 VALVE)
- NELSON TWIG CONTROL MODULE (4 VALVE)
- 3/4" CAP (FOR FUTURE USE)
- Water Supply

PROJECT:  
SUMMER 2020

DESIGNED FOR:  
KRAMER

ORCHARD & VINEYARD SUPPLY  
**OVS**  
WE SELL SOLUTIONS

1104 E. MEAD  
YAKIMA, WA 98903  
P: 509.453.9983  
F: 509.453.1258

0 1" 2"

TWO INCHES AT FULL SCALE.  
IF NOT, SCALE ACCORDINGLY.

DESIGNED BY: MM      MANAGED BY: DF

DESIGN DATE: 6/4/2020      PLOT DATE: 6/5/2020

PLOT SCALE: 1" = 60'      **OVERALL**

REF: KRAMER-SUMMER 2020 - DRP - 06420

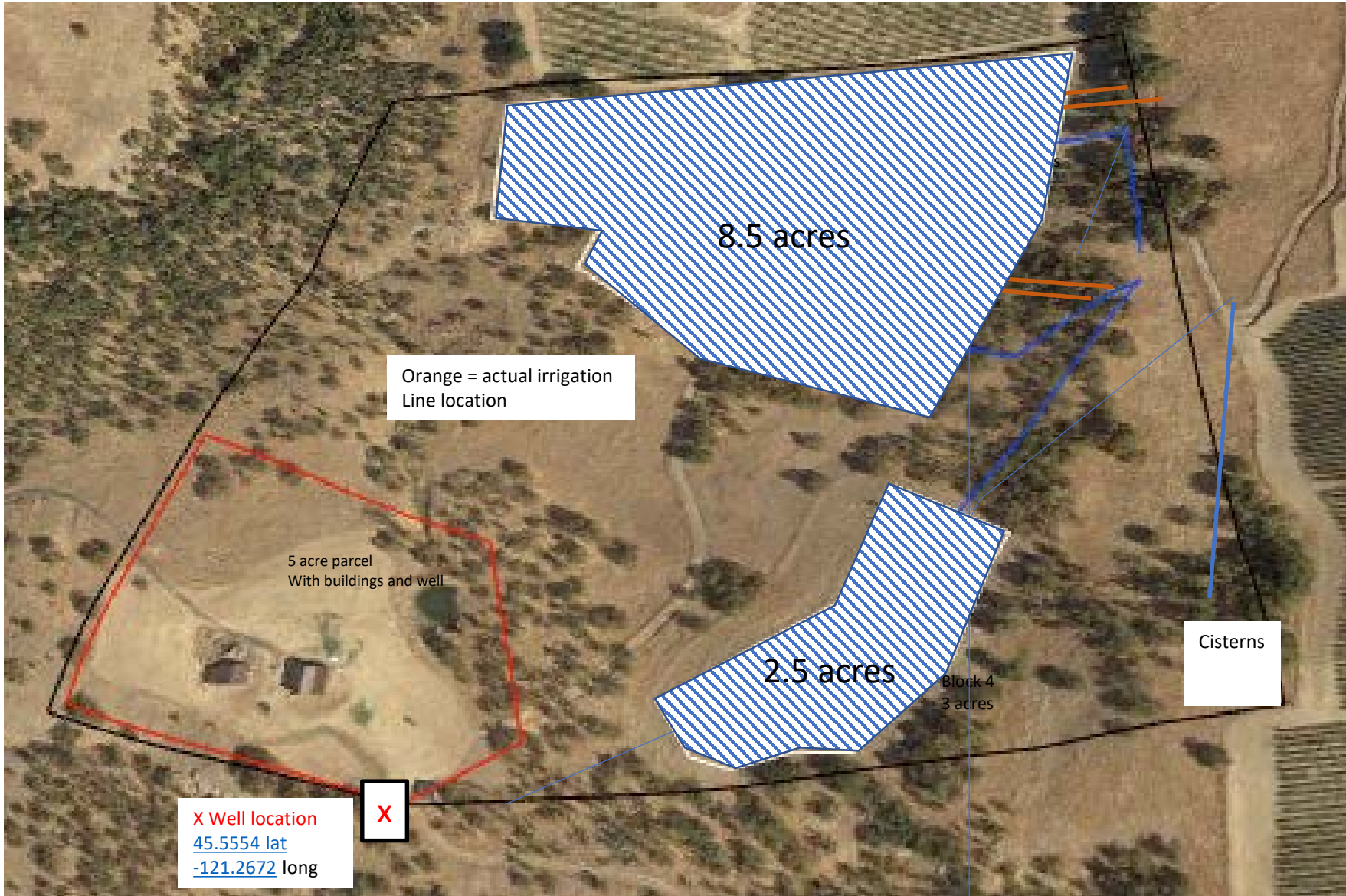
**DRIP**

5814 Mill Creek Road, The Dalles, Oregon  
Township 1N Range 12E Section 24

RECEIVED

JUN 11 2020

OWRD



The 20 GPM Well,  
located  
**936 feet West**  
**and 12 feet North** from the  
Center of Section 24, 1 North, 12  
East, W.M, SE ¼ NW ¼

[45.5554 lat](#)  
[-121.2672 long](#)

5814 Mill Creek Road, The Dalles, Oregon  
Township 1N Range 12E Section 24

RECEIVED

JUN 11 2020

OWRD



The 20 GPM Well,  
located  
**936 feet West**  
**and 12 feet North** from the  
Center of Section 24, 1 North, 12  
East, W.M, SE ¼ NW ¼

[45.5554 lat](#)  
[-121.2672 long](#)