

Application Map
Tompkins, Lee, Clifford
Douglas County
T.26S. R6W. Section 33

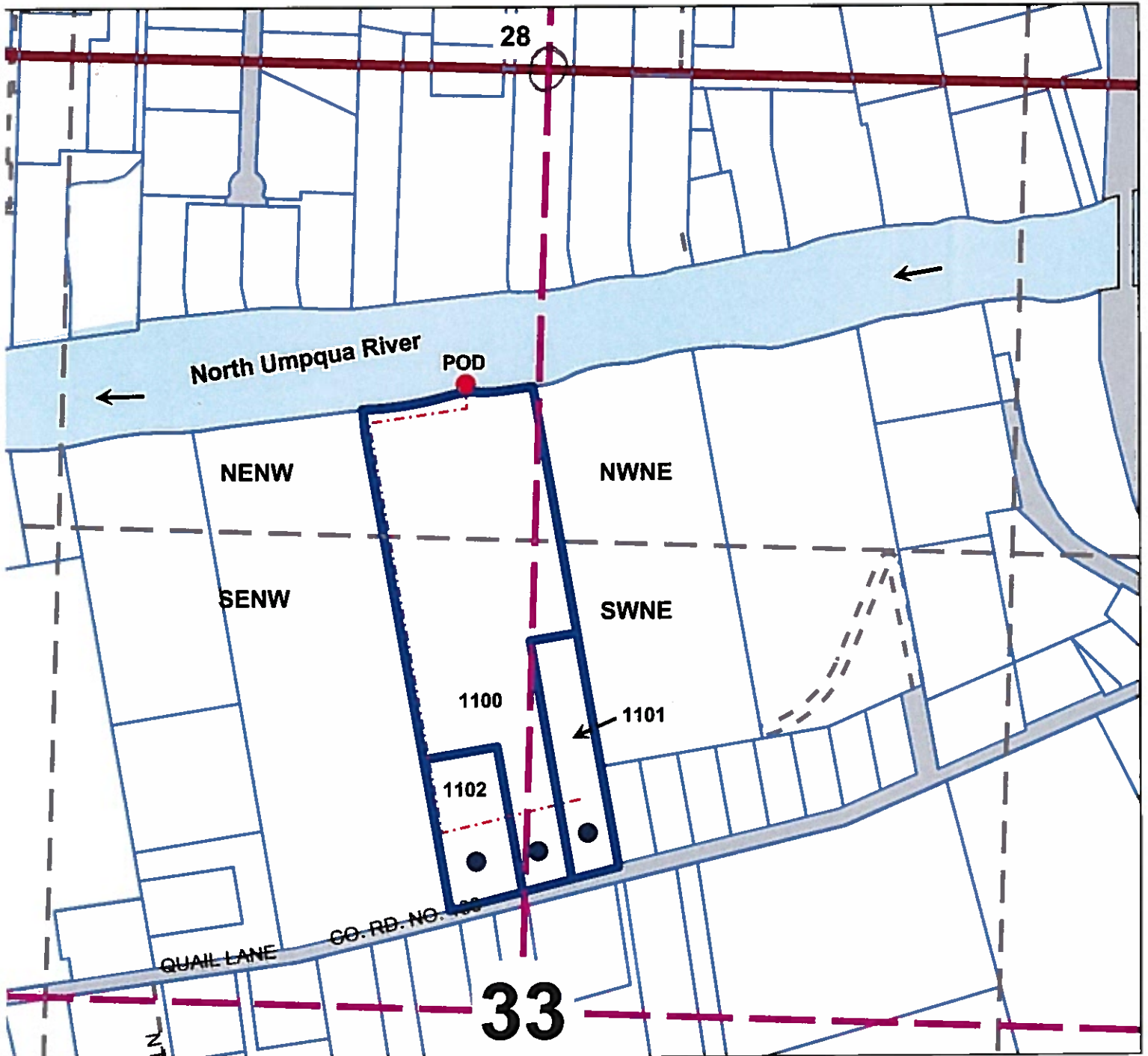
RECEIVED

JUN 29 2020

OWRD



Scale: 1" = 400'



**Point of Diversion is 890 ft South and 187 ft West of the
N 1/4 Section corner of Section 33**

The purpose of this map is to identify
the location of a water right.
Not intended to show property ownership.

THIS MAP WAS PREPARED FOR ASSESSMENT PURPOSE ONLY.

NE1/4 SEC.33 T.26S. R.6W. W.M.
DOUGLAS COUNTY

REVISED ON
7-23-19

26 6 33A

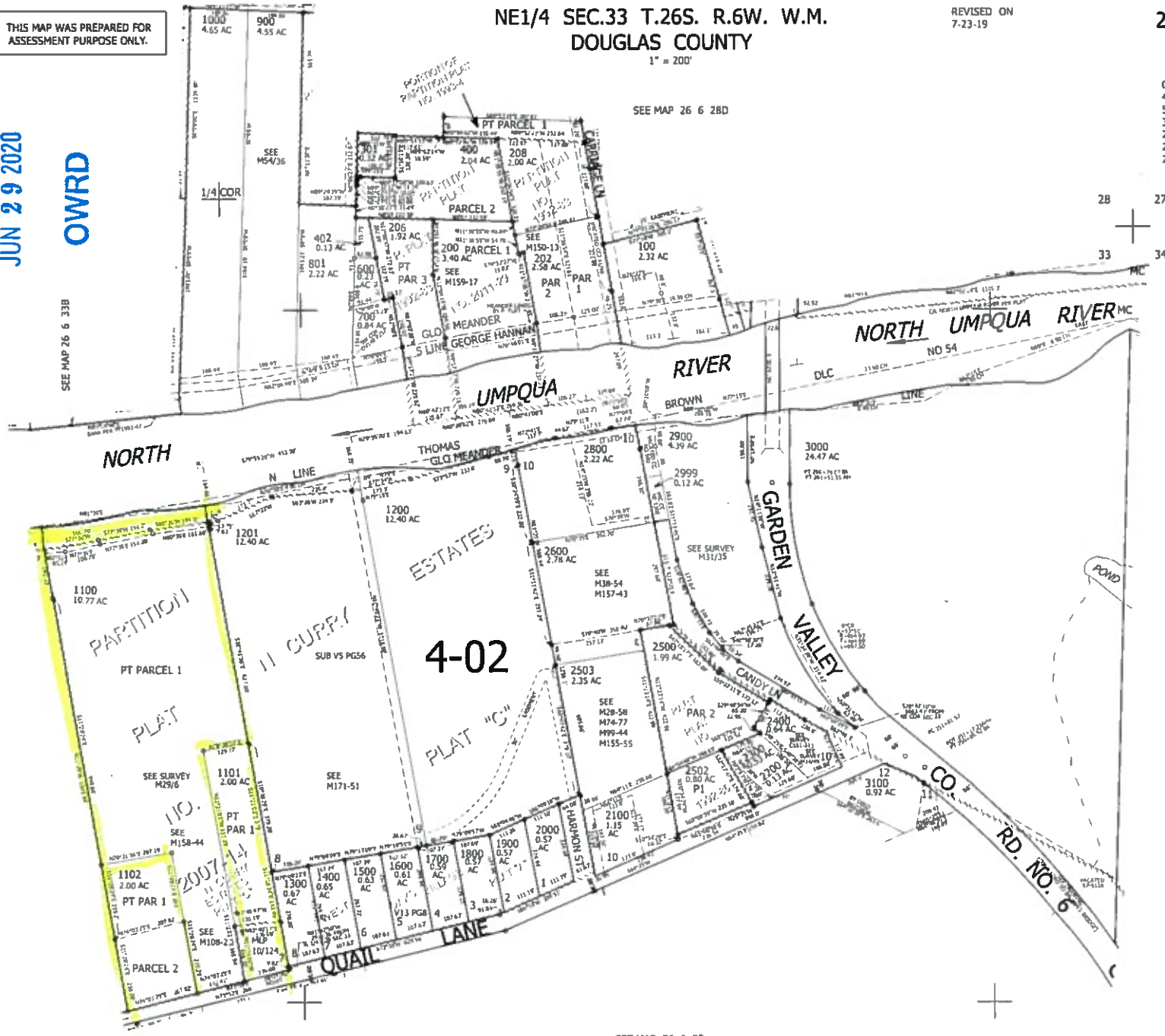
1" = 200'

CANCELLED NOS
401 2501 800
500 2700 701
300 201 2504
203 204 205
2505 1103 1104
207

RECEIVED

JUN 29 2020

OWRD



SEE MAP 26 6 33B

SEE MAP 26 6 28D

28 27
33 34

SEE MAP 26 6 34

596,500

SEE MAP 26 6 33

CEN
SEC

9,147,000

1/4
CDR

26 6 33A