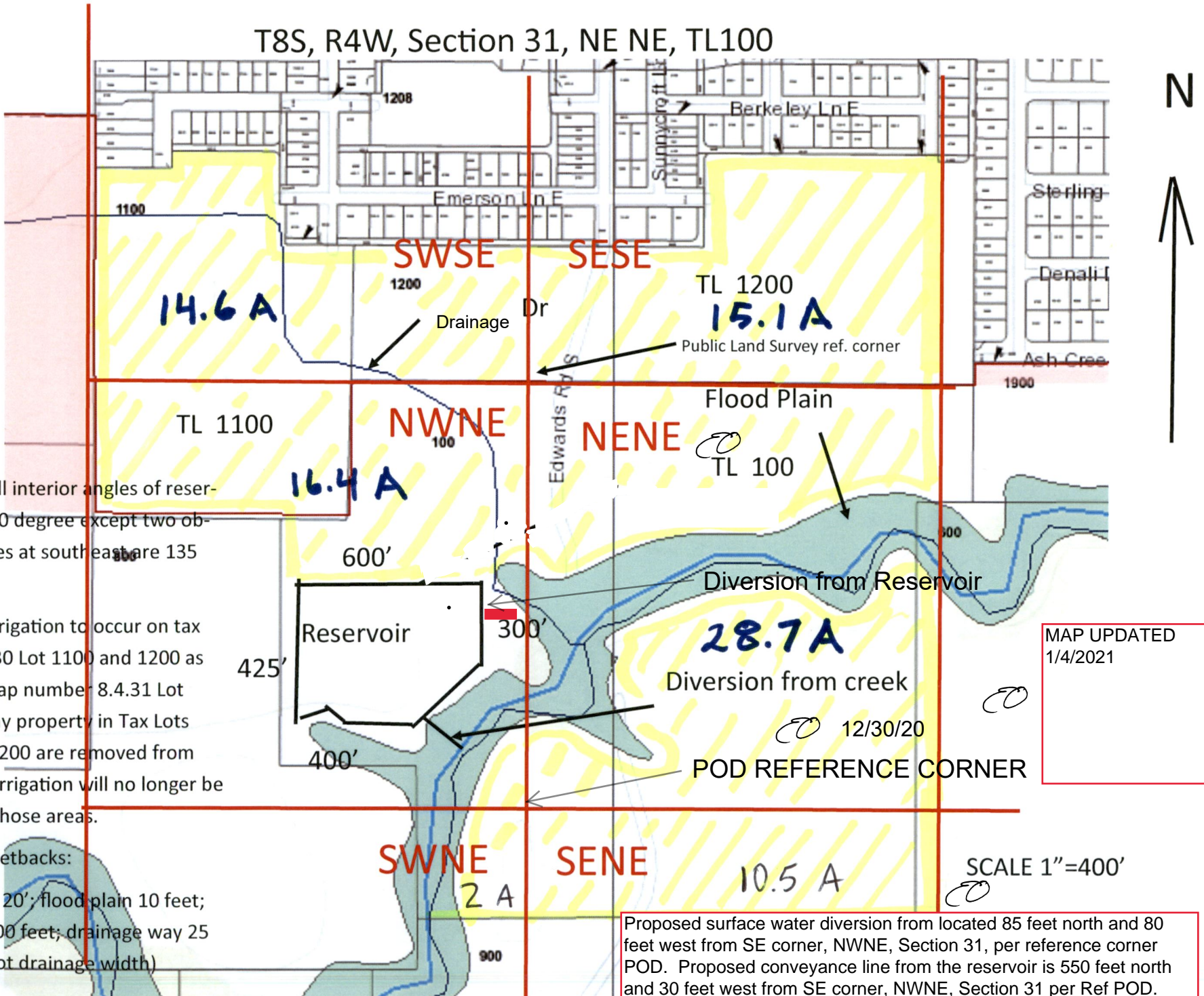


T8S, R4W, Section 31, NE NE, TL100



Note 1: All interior angles of reservoir are 90 degree except two obtuse angles at southeast are 135 degrees

Note 2: Irrigation to occur on tax map 8.4.30 Lot 1100 and 1200 as well as map number 8.4.31 Lot 100. If any property in Tax Lots 1100 or 1200 are removed from EFU, the irrigation will no longer be used for those areas.

Note 3: Setbacks:
 Prop Line 20'; flood plain 10 feet;
 Stream 100 feet; drainage way 25 feet (8 foot drainage width)

MAP UPDATED
 1/4/2021

Proposed surface water diversion from located 85 feet north and 80 feet west from SE corner, NWNE, Section 31, per reference corner POD. Proposed conveyance line from the reservoir is 550 feet north and 30 feet west from SE corner, NWNE, Section 31 per Ref POD.