

RECEIVED

OCT 16 2020

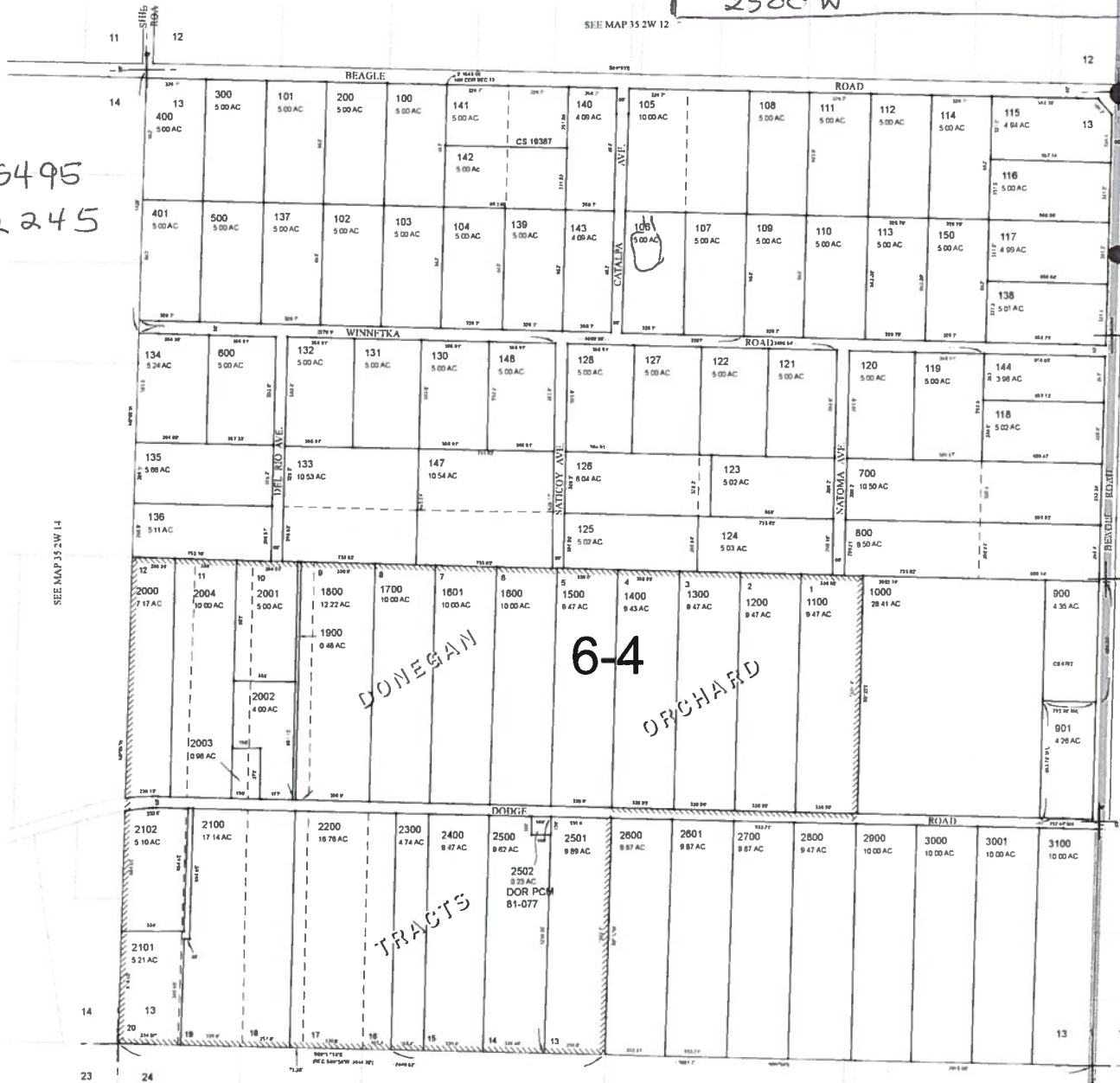
OWRD

FOR ASSESSMENT AND TAXATION ONLY

SECTION 13, T.35S., R.2W., W.M. NWNE TL 106  
JACKSON COUNTY  
1" = 400'

35 2W 13

Longitude -122.885495  
Latitude 42.532245



CANCELLED TAX LOT NUMBERS.  
145  
146 ADDED TO 147  
149  
870' S

