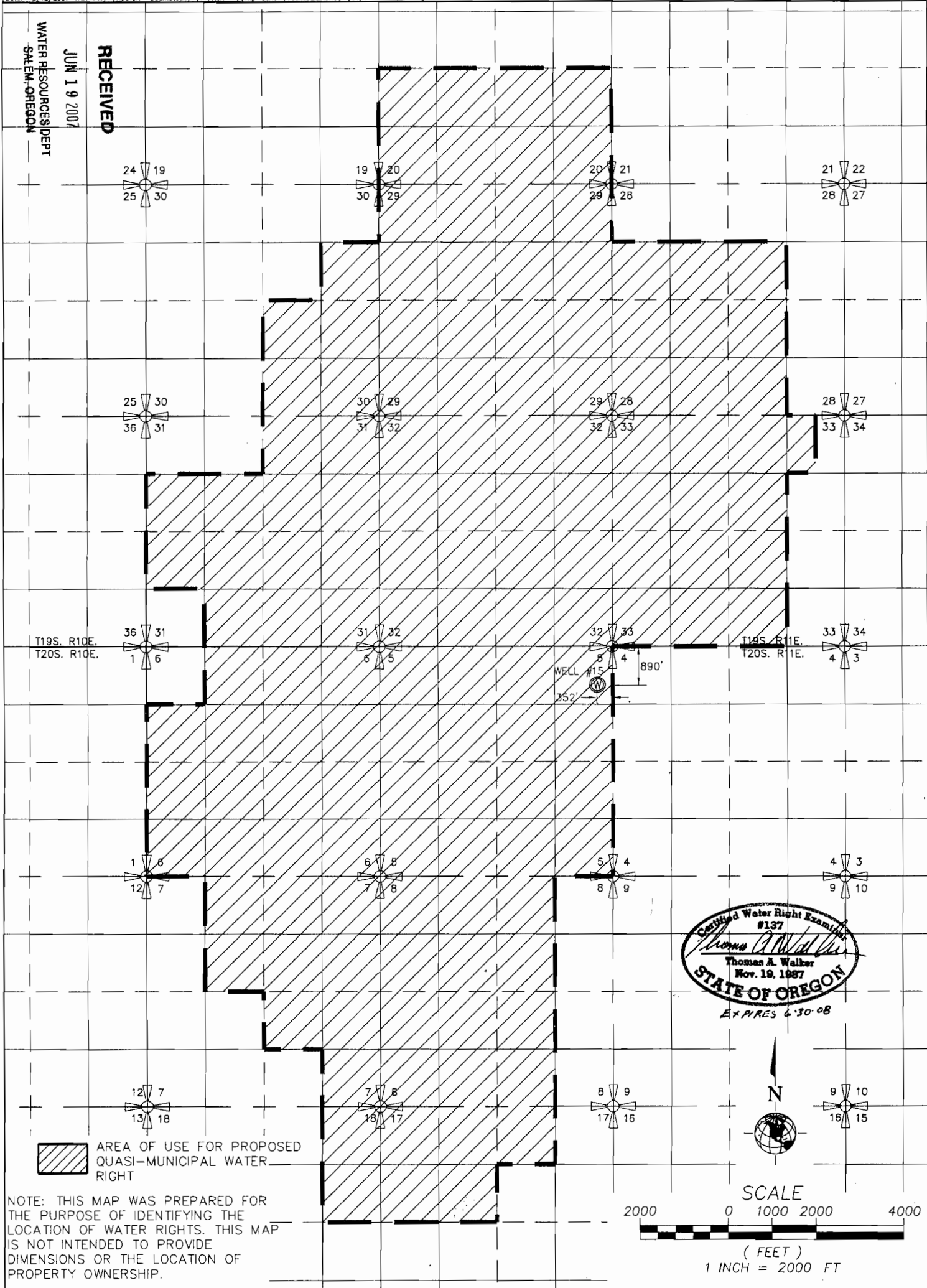

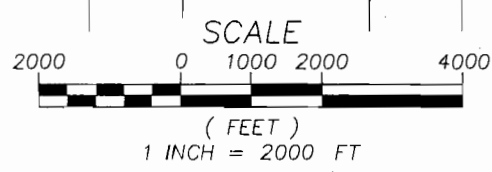
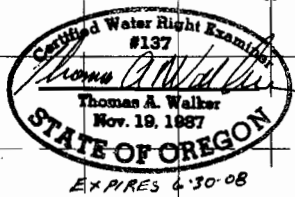


RECEIVED
 JUN 19 2007
 WATER RESOURCES DEPT
 SALEM, OREGON



 AREA OF USE FOR PROPOSED QUASI-MUNICIPAL WATER RIGHT

NOTE: THIS MAP WAS PREPARED FOR THE PURPOSE OF IDENTIFYING THE LOCATION OF WATER RIGHTS. THIS MAP IS NOT INTENDED TO PROVIDE DIMENSIONS OR THE LOCATION OF PROPERTY OWNERSHIP.



SHEET WR1.0	DESIGNED BY: SCC	CHECKED BY: TAW			
	DRAWN BY: SCC	APPROVED BY: TAW			
	LAST EDIT: 2/12/2007	PLOT DATE: 02/12/07			
	DATE	BY	REV.	REVISION	CK'D

SUNRIVER WATER, LLC
GROUNDWATER APPROPRIATION APPLICATION MAP
TOWNSHIPS 19 & 20 SOUTH, RANGE 11 EAST

DESCHUTES CO. OREGON
 SCALE: 1"=2000' PROJECT NO. 32080.1000 DRAWING FILE NAME: 32080-LAND-WATER RIGHTS

W&H PACIFIC
 920 Emkey, Suite C-100
 Bend, Oregon 97708-1041
 (841)398-4888
 (841)398-4889 Fax
 whpacific.com
 Planners • Engineers • Surveyors • Landscape Architects