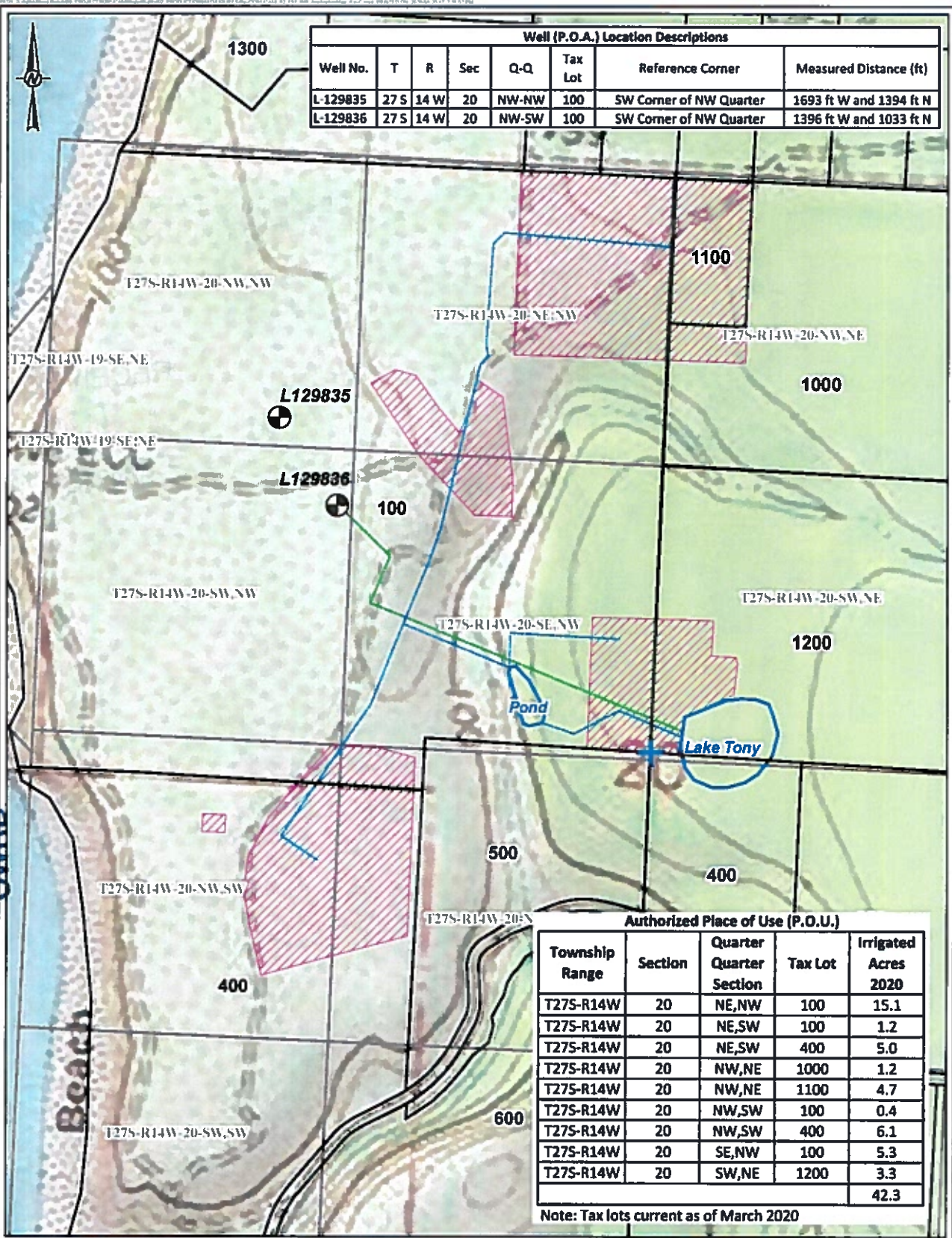


RECEIVED
NOV 04 2020

OWRD

Well (P.O.A.) Location Descriptions							
Well No.	T	R	Sec	Q-Q	Tax Lot	Reference Corner	Measured Distance (ft)
L-129835	27 S	14 W	20	NW-NW	100	SW Corner of NW Quarter	1693 ft W and 1394 ft N
L-129836	27 S	14 W	20	NW-SW	100	SW Corner of NW Quarter	1396 ft W and 1033 ft N



Authorized Place of Use (P.O.U.)				
Township Range	Section	Quarter Quarter Section	Tax Lot	Irrigated Acres 2020
T27S-R14W	20	NE,NW	100	15.1
T27S-R14W	20	NE,SW	100	1.2
T27S-R14W	20	NE,SW	400	5.0
T27S-R14W	20	NW,NE	1000	1.2
T27S-R14W	20	NW,NE	1100	4.7
T27S-R14W	20	NW,SW	100	0.4
T27S-R14W	20	NW,SW	400	6.1
T27S-R14W	20	SE,NW	100	5.3
T27S-R14W	20	SW,NE	1200	3.3
				42.3

Note: Tax lots current as of March 2020

- POINTS OF APPROPRIATION (P.O.A.)
- COURSE DISTRIBUTION PIPELINE (FROM LAKE TONY)
- SUPPLY PIPELINE (TO LAKE TONY)
- PROPOSED P.O.U.
- PARCEL AND TAX LOT
- QUARTER QUARTER SECTION
- REFERENCE CORNER



CLIENT: BANDON DUNES LIMITED PARTNERSHIP
 PROJECT: BOLP/SHEEP RANCH WATER RIGHTS/OR
 TITLE: GROUNDWATER RIGHT APPLICATION MAP

REFERENCES(S)
 1. BLM, 2020
 2. COOS COUNTY, 2020

CONSULTANT: GOLDER

YYYY-MM-DD	2020-08-30
DESIGNED	
PREPARED	HJ
REVIEWED	RB
APPROVED	DB

PROJECT NO: 20147488 PHASE: 001 REV: C FIGURE: 1