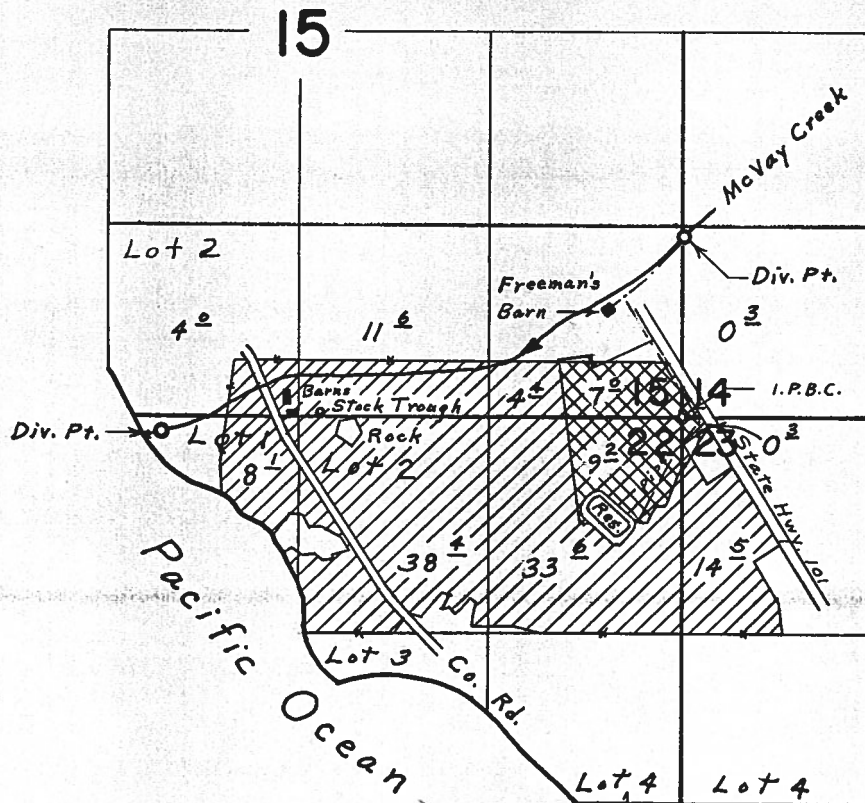


# T. 41 S. R. 13 W. W. M.



Div. Pts. located; 1230' N. & 20' E., 100' S. & 3570' W. both from S.E. Cor. Sec. 15

Primary   
 Supplemental 

## FINAL PROOF SURVEY UNDER

Application No. 38932 Permit No. 29203  
 IN NAME OF

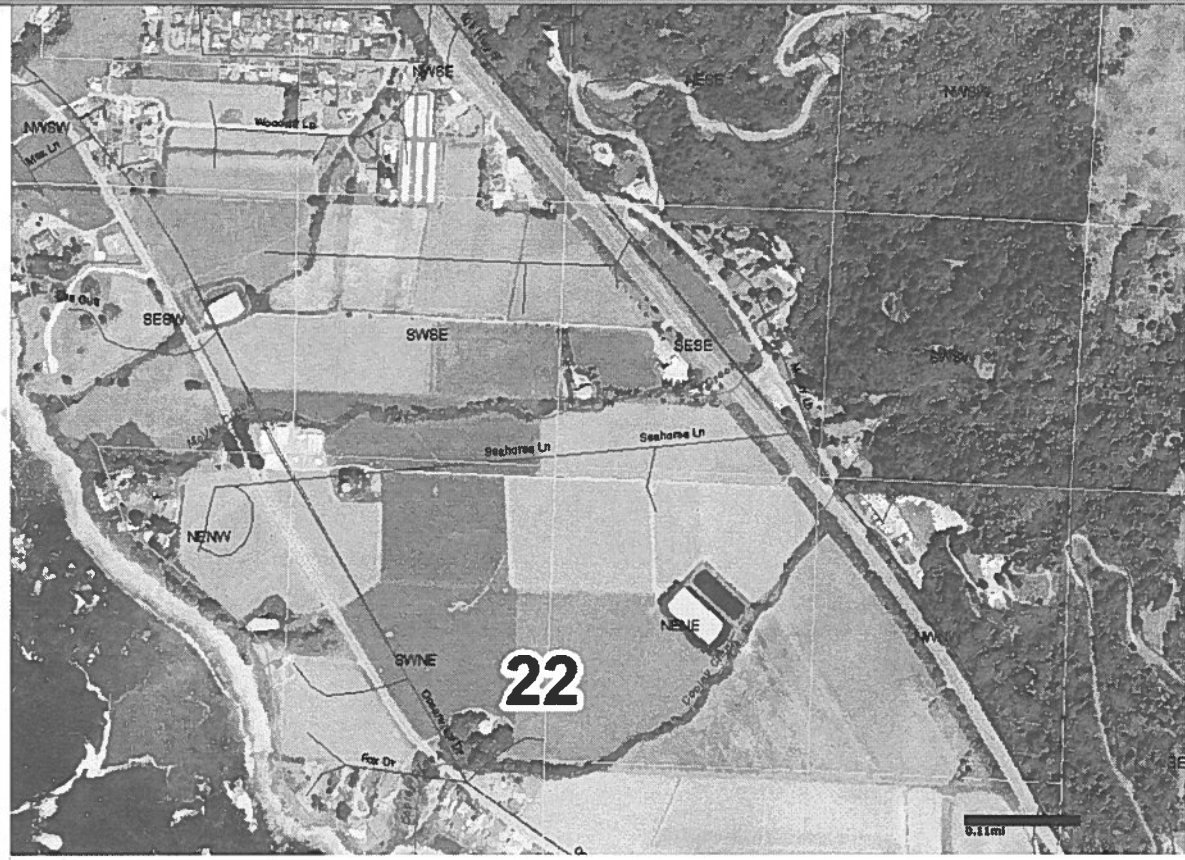
**ROBERT K. & ELIZABETH C. HASTINGS**

Surveyed Sept. 12, 1969, by L. E. Gould

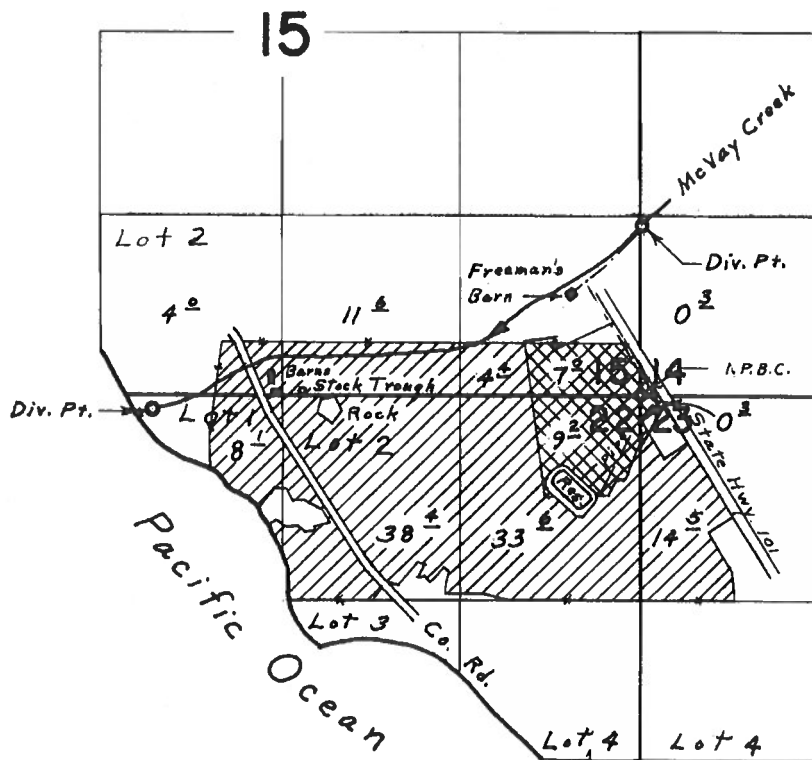
Map Contents

- OWRD Data
  - Rule Boundaries
  - Political Boundaries
  - Water Availability
  - Water Rights
  - Surface water
- Base Data
  - Political Boundaries
  - PLS
  - Roads
  - Surface water
  - Topography
- Imagery
  - Aerial Photography

Results



# T. 41 S. R. 13 W. W.M.



Div. Pts. located: 1230' N. & 20' E., 100' S. & 3570' W. both from S.E. Cor. Sec. 15

Primary  
Supplemental



## FINAL PROOF SURVEY UNDER

Application No. 38932 Permit No. 29203  
IN NAME OF  
**ROBERT K. & ELIZABETH C. HASTINGS**

Surveyed Sept. 12, 1969, by L. E. Gould

66.6770

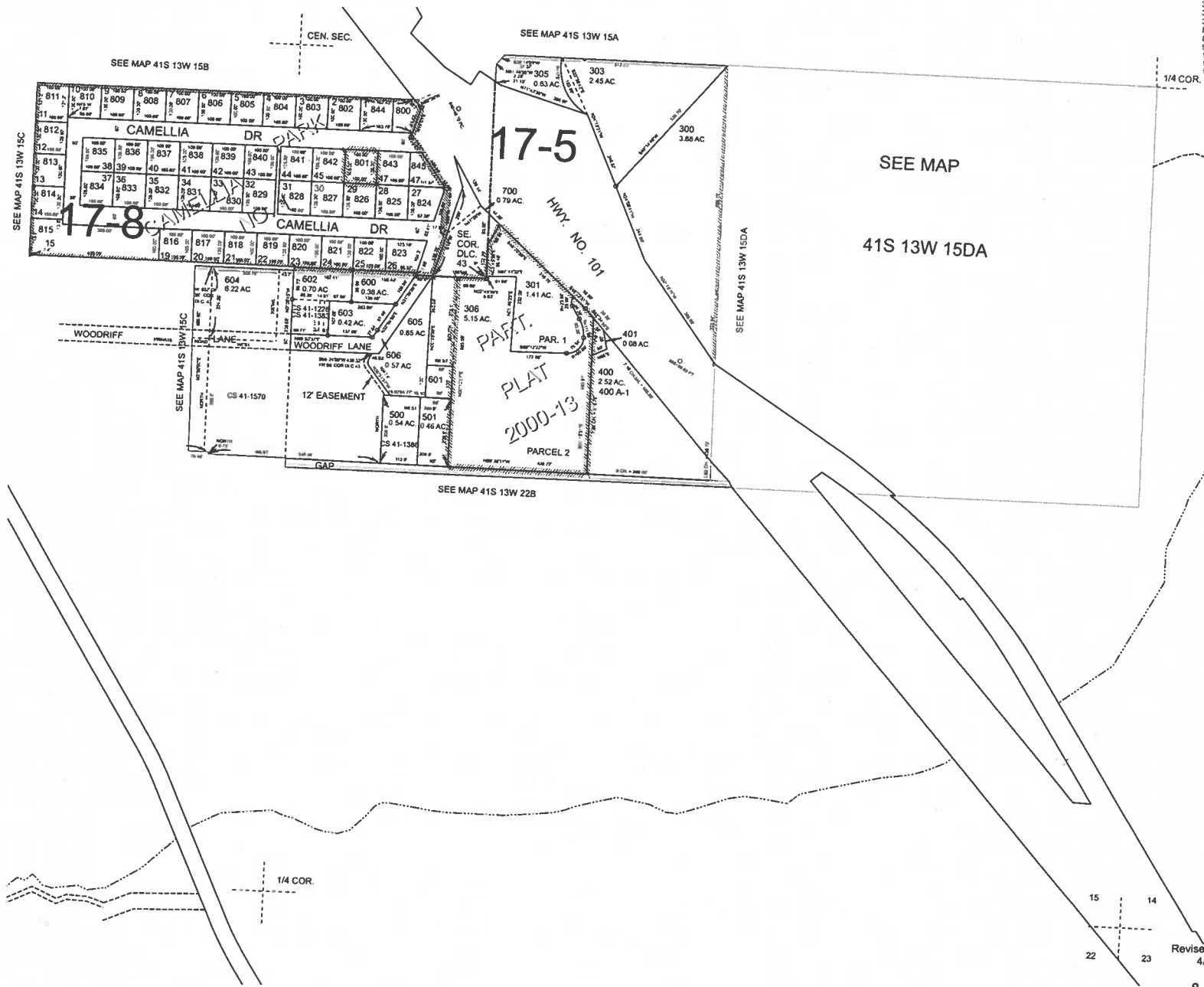
THIS MAP WAS PREPARED FOR ASSESSMENT PURPOSE ONLY



S.E. 1/4 SEC. 15 T.41S. R.13W. W.M.  
CURRY COUNTY  
1" = 200'

41S13W15D  
& INDEX

- CANCELLED
- 100 THRU 120
- 200
- 201
- 301A1
- 302
- 304
- 888
- 890
- 900
- 1000 THRU 1004
- 1100
- 1200



Revised: RAA  
4/1/2009

& INDEX  
41S13W15D

THIS MAP WAS PREPARED FOR ASSESSMENT PURPOSE ONLY



N.W.1/4 SEC.22 T.41S. R.13W. W.M.  
CURRY COUNTY  
1" = 200'

41S13W22B

- CANCELLED:
- 102
- 204U1
- 204U2
- 207
- 207U1
- 207U2
- 208
- 208U1
- 208U2
- 220U1
- 220U2
- 221
- 222U1
- 222U2
- 223U1
- 223U2
- 224U1
- 224U2
- 301



Revised: 2/9/2009

41S13W22B

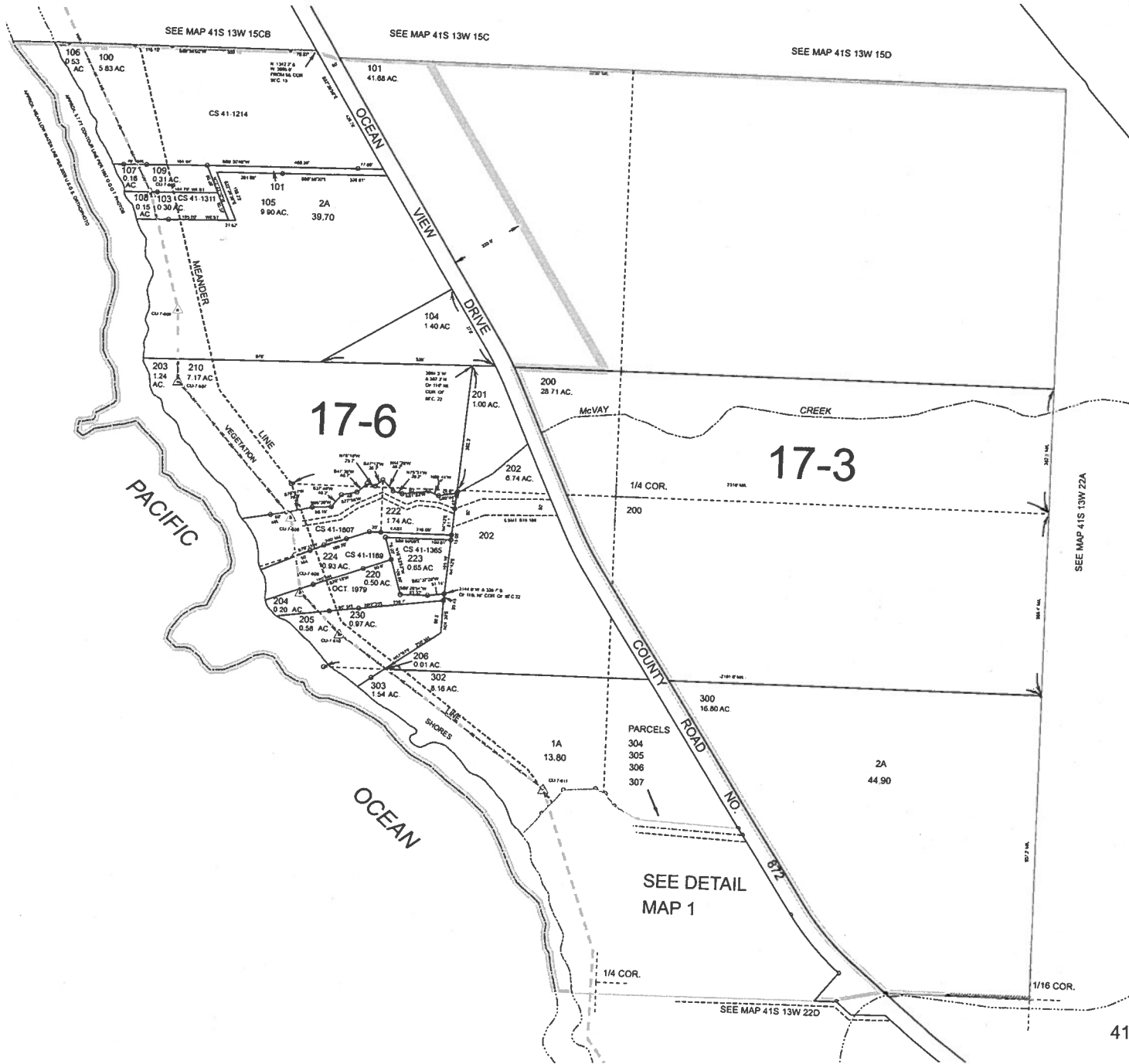
THIS MAP WAS PREPARED FOR ASSESSMENT PURPOSE ONLY



N.W. 1/4 SEC. 22 T. 41 S. R. 13 W. W. M.  
CURRY COUNTY  
1" = 200'

41S13W22B

- CANCELLED:
- 102
- 204U1
- 204U2
- 207
- 207U1
- 207U2
- 208
- 208U1
- 208U2
- 220U1
- 220U2
- 222U1
- 222U2
- 223U1
- 223U2
- 224U1
- 224U2
- 301



17-6

17-3

SEE DETAIL MAP 1

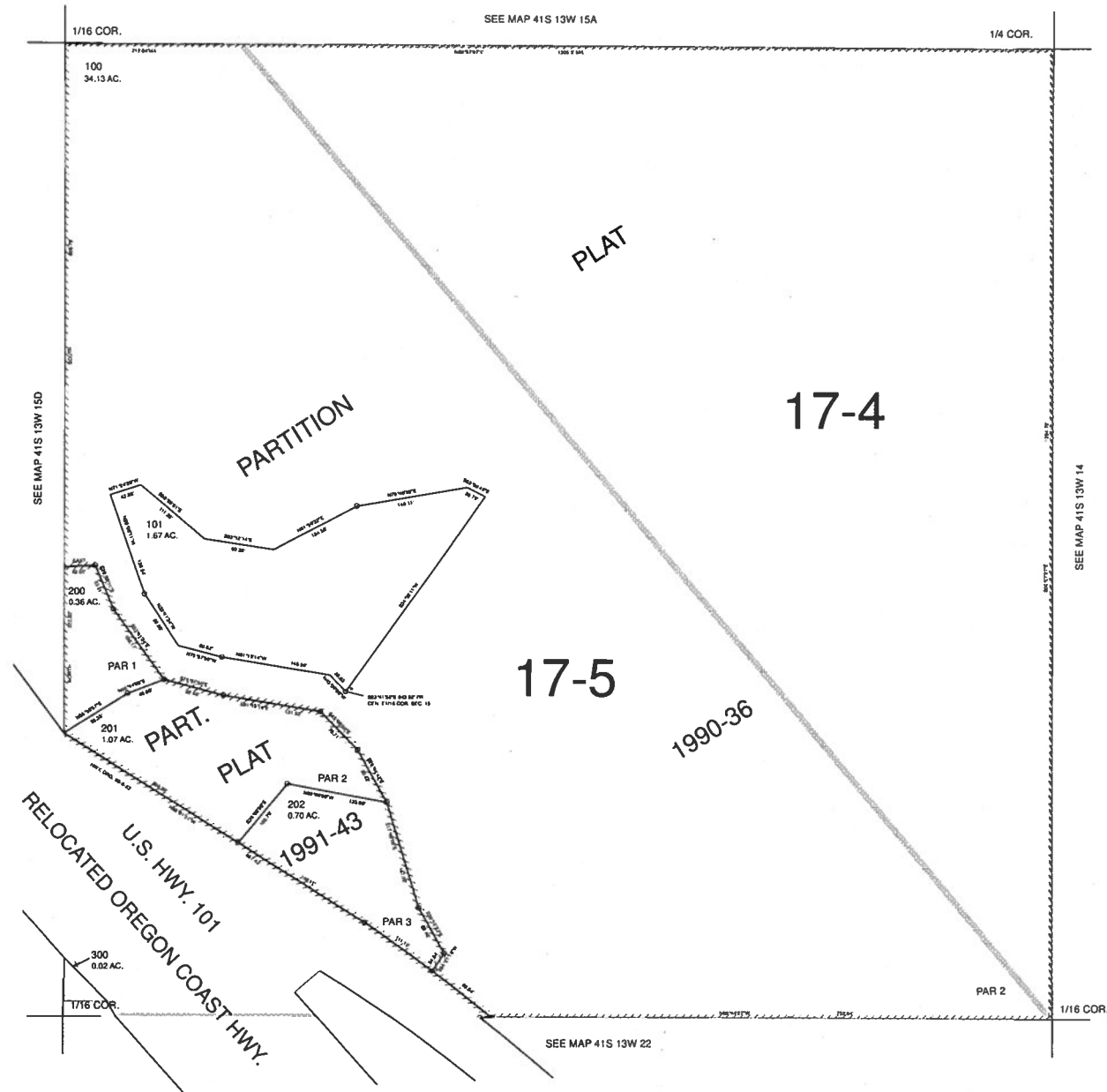
Revised: 2/9/2009

41S13W22B

THIS MAP WAS PREPARED FOR ASSESSMENT PURPOSE ONLY

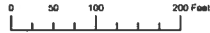
NE1/4 SE1/4 SECTION 15 T.41S. R.13W. W.M.  
CURRY COUNTY  
1" = 100'

41S 13W 15DA





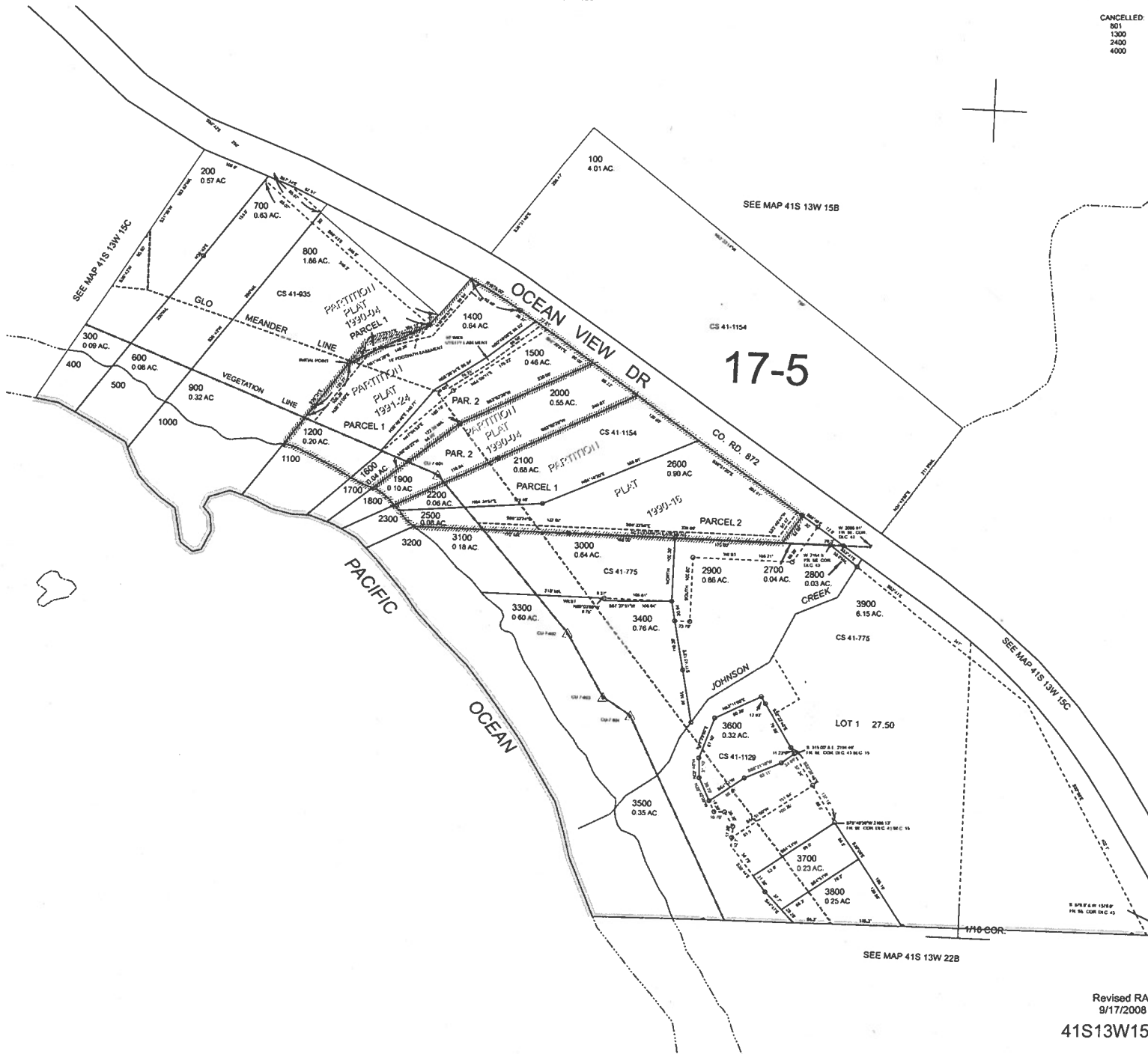
THIS MAP WAS PREPARED FOR ASSESSMENT PURPOSE ONLY



N.W. 1/4 S.W. 1/4 SEC. 15 T. 41S. R. 13W. W.M.  
CURRY COUNTY  
1" = 100'

41S13W15CB

CANCELLED:  
501  
1300  
2400  
4000



SEE MAP 41S 13W 22B

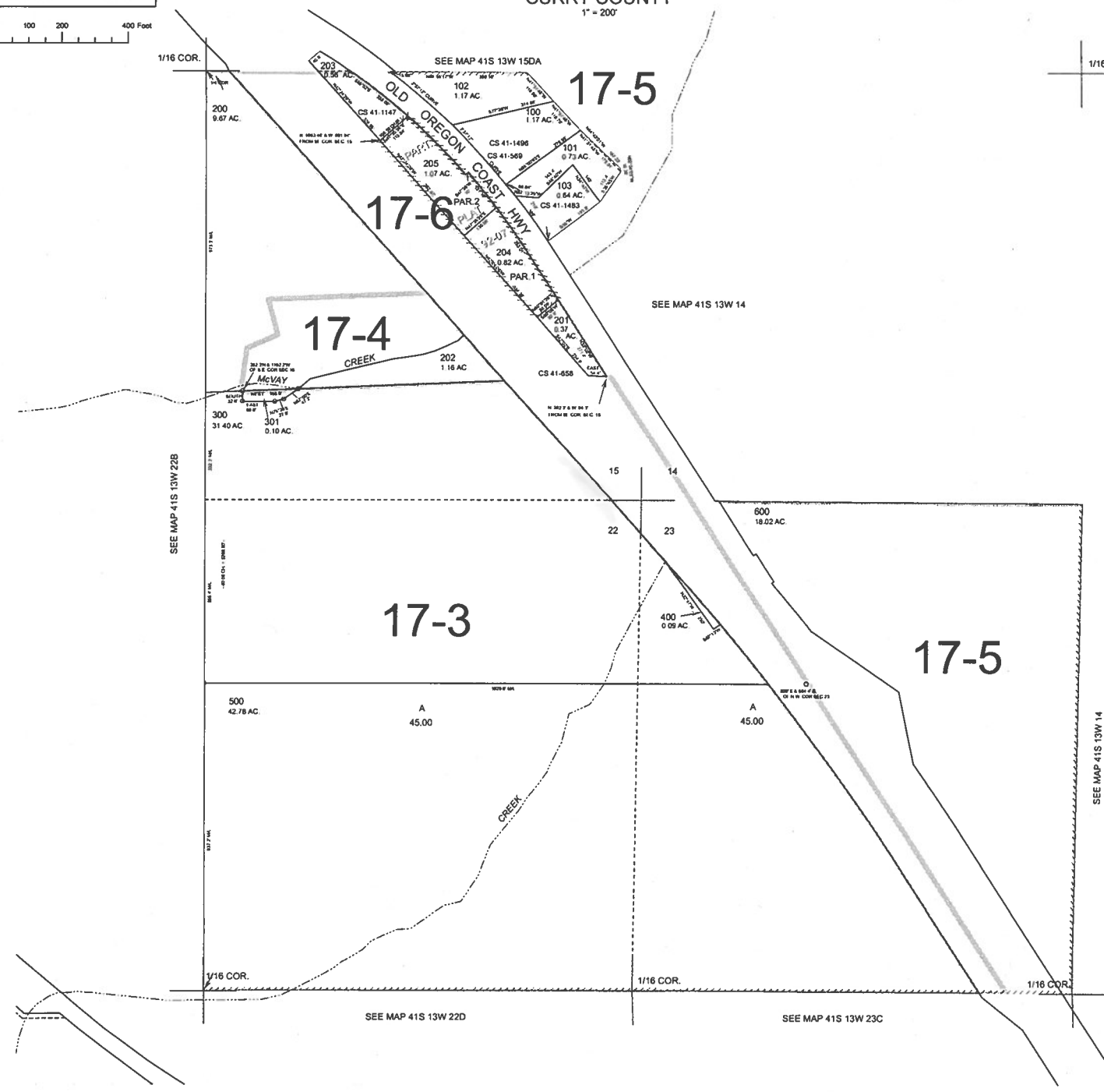
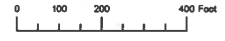
Revised RAA  
9/17/2008  
41S13W15CB



THIS MAP WAS PREPARED FOR ASSESSMENT PURPOSE ONLY

NE1/4 SECTION 22 T.41S. R.13W. W.M. CURRY COUNTY 1" = 200'

41S 13W 22A CANCELLED NO 700 800



SEE MAP 41S 13W 22B

SEE MAP 41S 13W 14

SEE MAP 41S 13W 22D

SEE MAP 41S 13W 23C

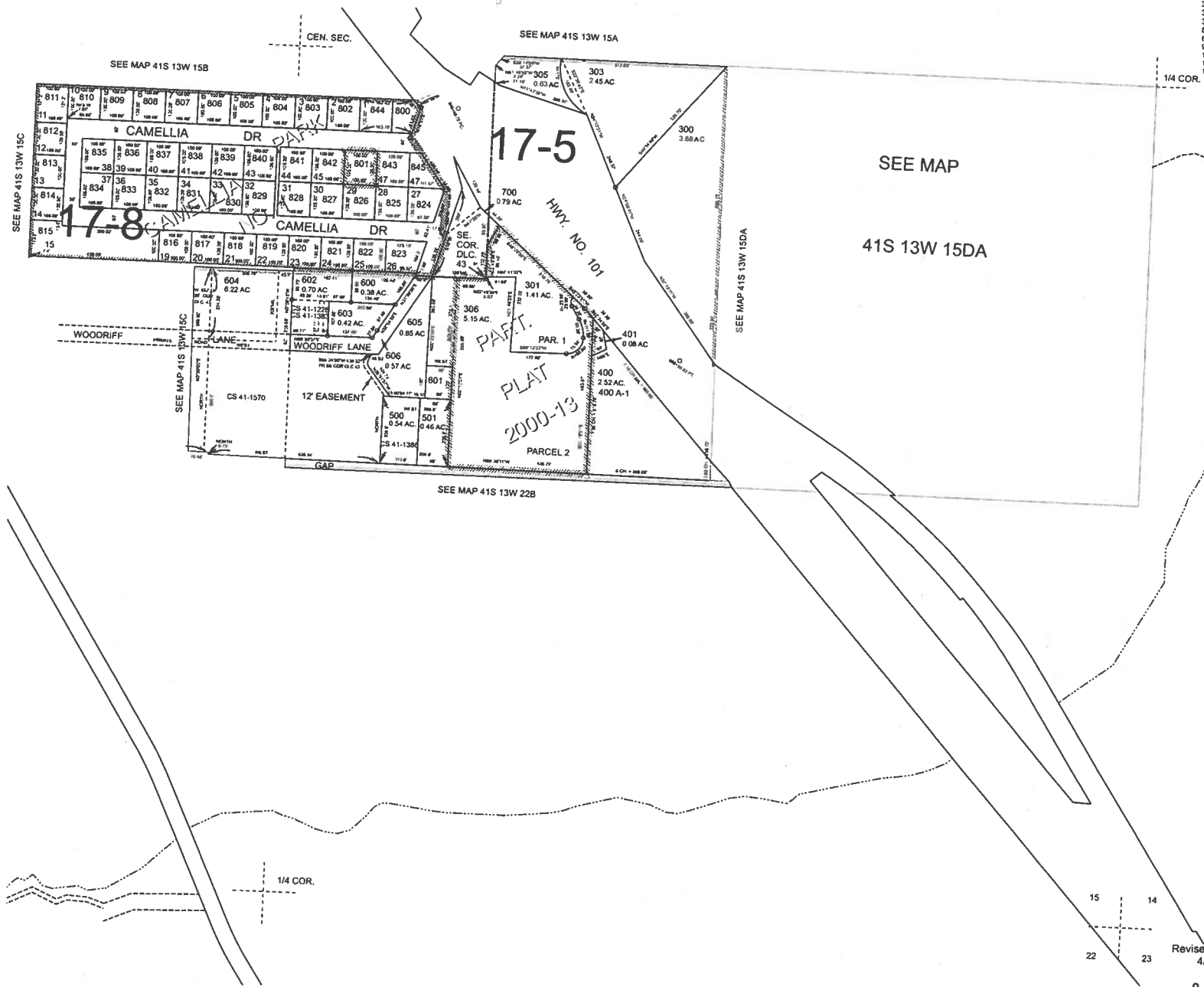
THIS MAP WAS PREPARED FOR ASSESSMENT PURPOSE ONLY



S.E. 1/4 SEC. 15 T.41S. R.13W. W.M.  
CURRY COUNTY  
1" = 200'

41S13W15D  
& INDEX

CANCELLED  
100 THRU 120  
200  
201  
301A1  
302  
304  
686  
696  
800  
1000 THRU 1004  
1100  
1200



15 14  
22 23

Revised: RAA  
4/1/2009

& INDEX  
41S13W15D

15

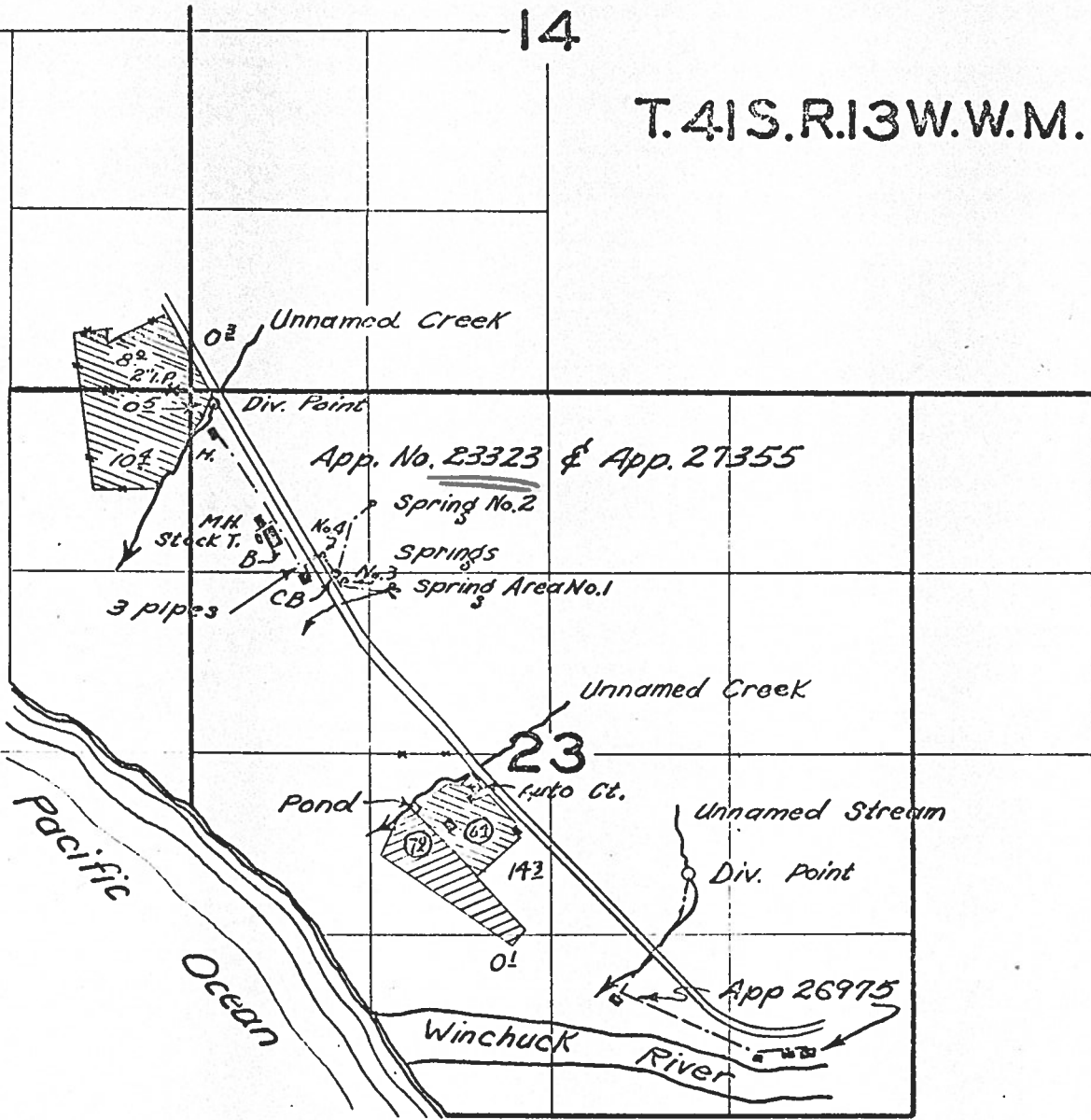
14

T.41S.R.13W.W.M.

22

23

24



FINAL PROOF SURVEY

UNDER

Application No. 23323 & 27355 Permit No. 26975

IN NAME OF

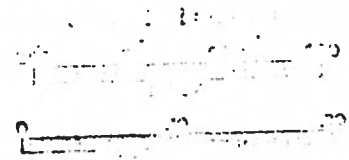
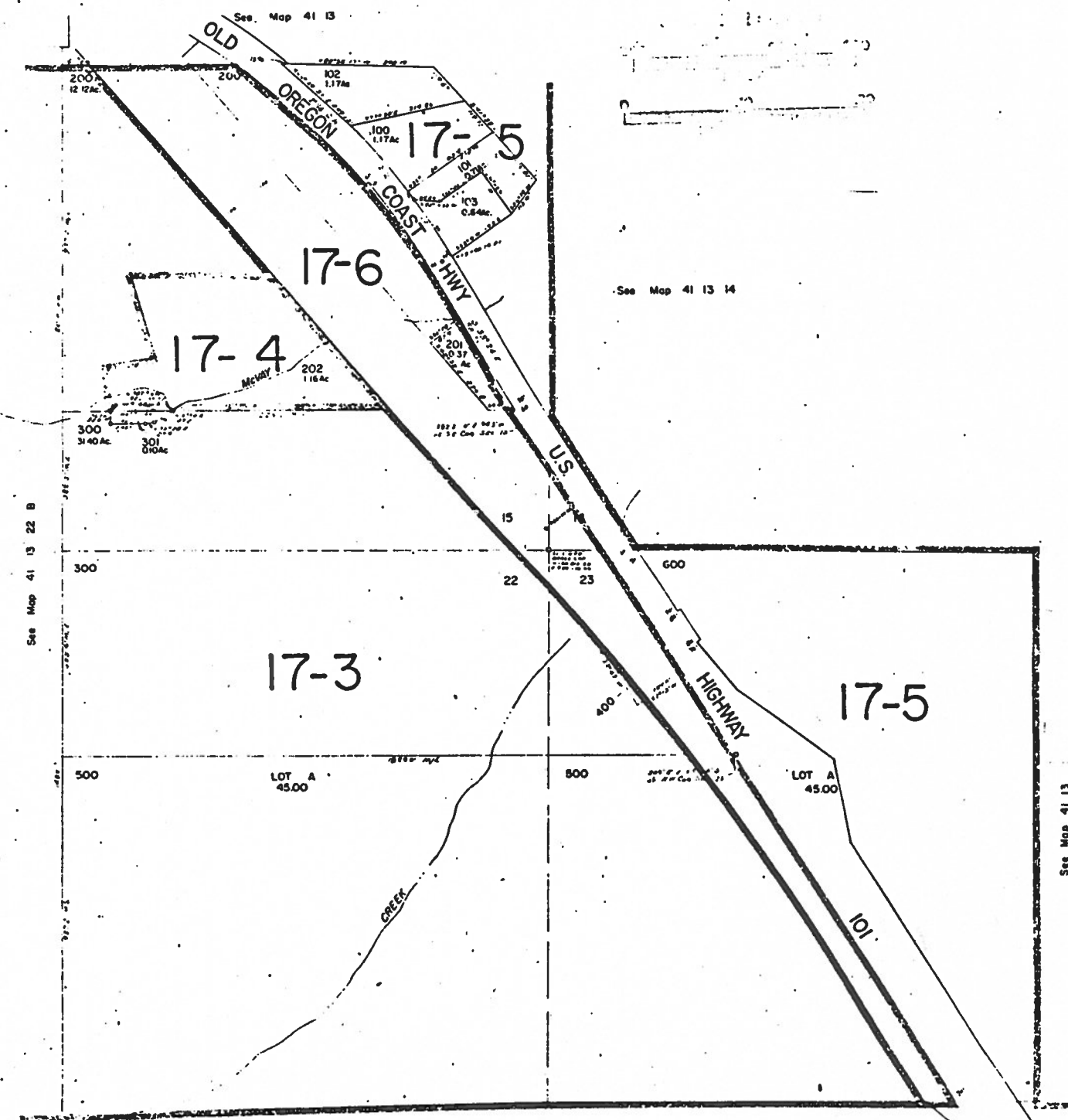
Donald T. Crockett David W. and Lois M. Crockett  
Martha W. Crockett Lewis J. Crockett Walter Crockett and

Enos A Potts

Surveyed Sept. 17 1943, by B.L. Crockett

Aug 11 1949

8.72  
3.98  
4.74



See Map 41 13 14

See Map 41 13 22 B

See Map 41 13

15

14

# T. 41 S. R. 13 W. W. M.

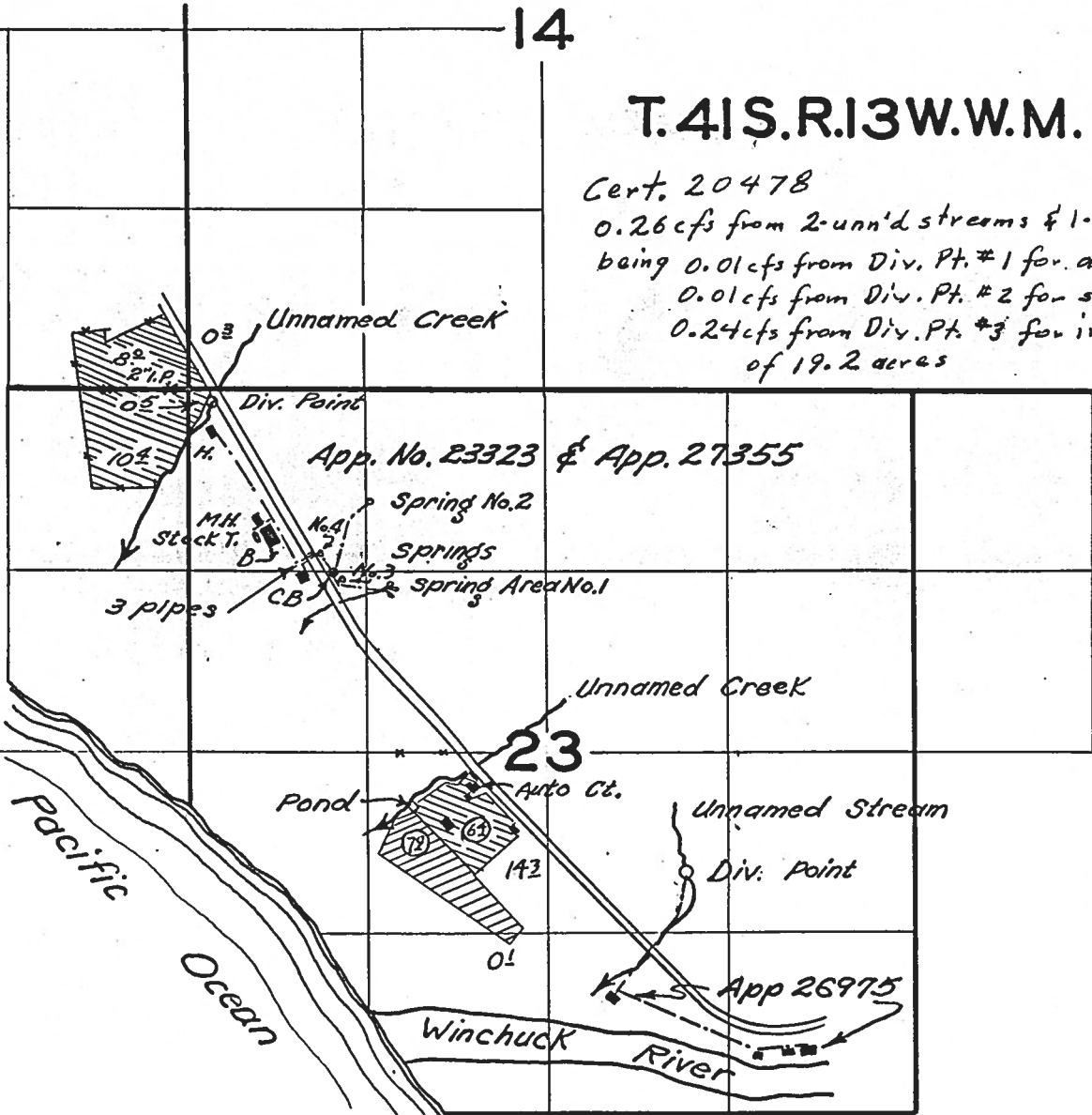
Cert. 20478

0.26 cfs from 2-unn'd streams & 1-unn'd spring  
being 0.01 cfs from Div. Pt. #1 for domestic,  
0.01 cfs from Div. Pt. #2 for stock, &  
0.24 cfs from Div. Pt. #3 for irrigation  
of 19.2 acres

22

23

24



## FINAL PROOF SURVEY

27355 UNDER 21537

23323 18560

20008 15579

Application No. 26975 Permit No. 21408

IN NAME OF

Donald T. Crockett David E. and Ardis S. DeArmond  
Martha D. and Floyd McAdams and Walter Biddle and

Enos A Potts

Surveyed Sept. 17. 19.53, by H.L. Coffman

Aug 11 1949

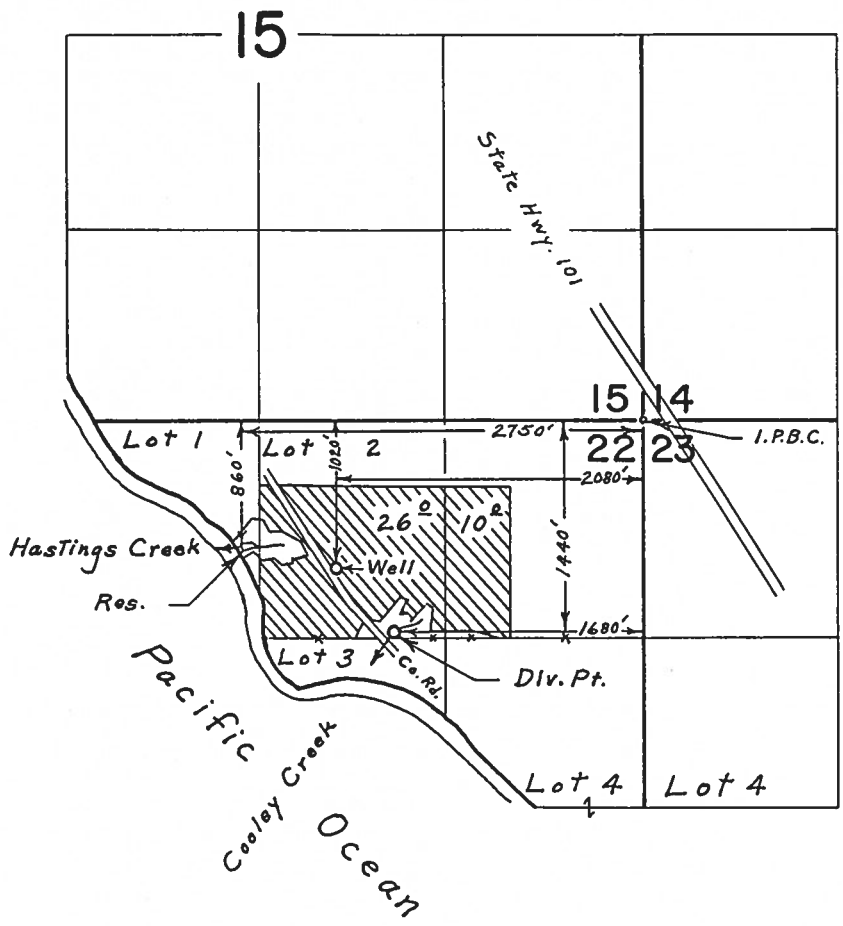
1953-D

File in 26975

# T. 41 S. R. 13 W. W. M.

Cert. 36985  
 0.2 cfs from Cooley Cr.  
 0.16 cfs from Hastings  
 Cr. & Reservoir  
 for supplemental  
 irrigation of 36.0  
 acres.

Cert. 36983  
 0.02 cfs from a well  
 for supplemental  
 irrigation of  
 36.0 acres.



## FINAL PROOF SURVEY UNDER

R-44201                      R-5021  
 43700                      32659  
 Application No. G-4120    Permit No. G-3717  
 IN NAME OF

**ROBERT K. & ELIZABETH C. HASTINGS**

Surveyed Sept. 12, 1969, by L. E. Gould

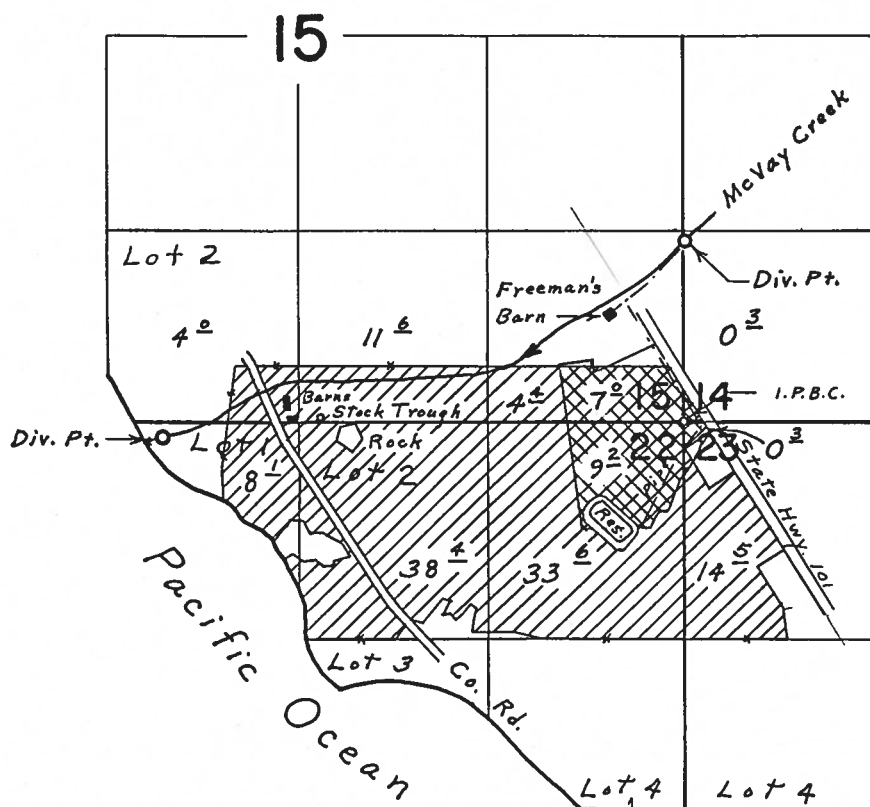
Cert. 36986

0.33 cfs from McVay  
Cr. for supplement  
irrigation of 16.8  
acres and primary  
irrigation of 114.6  
acres.

0.005 cfs for stock

0.04 cfs for commercial

# T. 41 S. R. 13 W. W. M.



Div. Pts. located: 1230' N. & 20' E., 100' S. & 3570' W. both from S.E. Cor. Sec. 15

Primary  
Supplemental

## FINAL PROOF SURVEY

UNDER

68672 / 68671

3

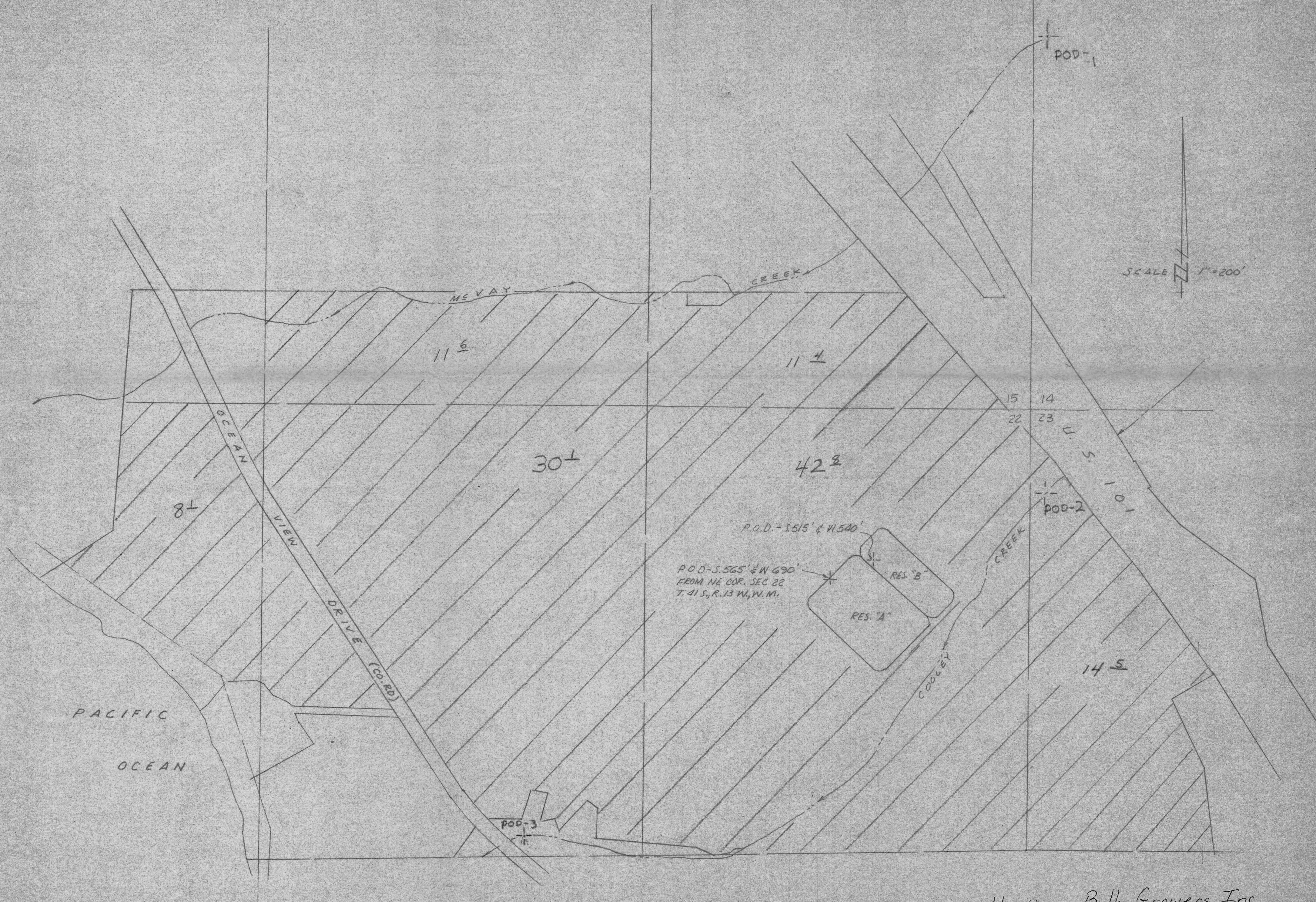
Application No. 38932 Permit No. 29203

IN NAME OF

ROBERT K. & ELIZABETH C. HASTINGS

Surveyed Sept. 12, 1969, by L. E. Gould





Hastings Bulb Growers, Inc.  
 Application No. 68672, R-68671  
 Permit No. 19876 R10813  
 RECEIVED  
 NOV 17 1986  
 WATER RESOURCES DEPT.  
 SALEM, OREGON