

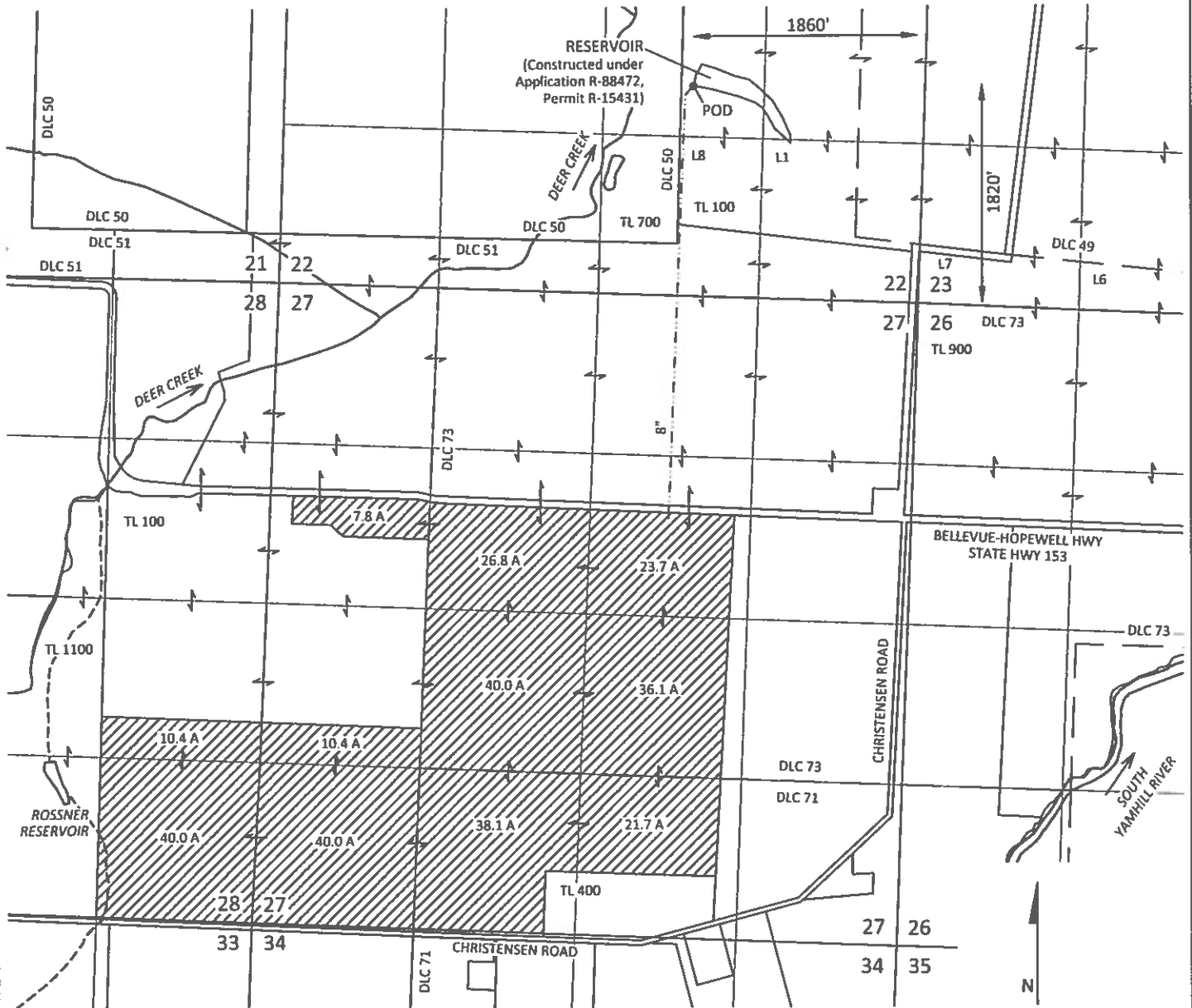
Sections 22, 27 & 28, T5S, R5W, W.M.,  
Yamhill County, Oregon

RECEIVED

NOV 10 2020

APPLICATION TO USE STORED WATER  
K.A. Berger Farms Inc.

OWRD



EXPLANATION



PROPOSED PLACE OF USE  
IRRIGATION - 295.0 ACRES



POINT OF DIVERSION (POD)



PIPE

SCALE



1 INCH = 1320 FEET

October 30, 2020

This map is not intended to  
provide legal dimensions or  
locations of property  
ownership lines

Figure 1



111 SW Fifth Ave., Suite 2400  
Portland, OR 97204  
O: 503.227.3251  
F: 503.274.4681  
[www.kpff.com](http://www.kpff.com)

KPFF Job No. 1700014.75