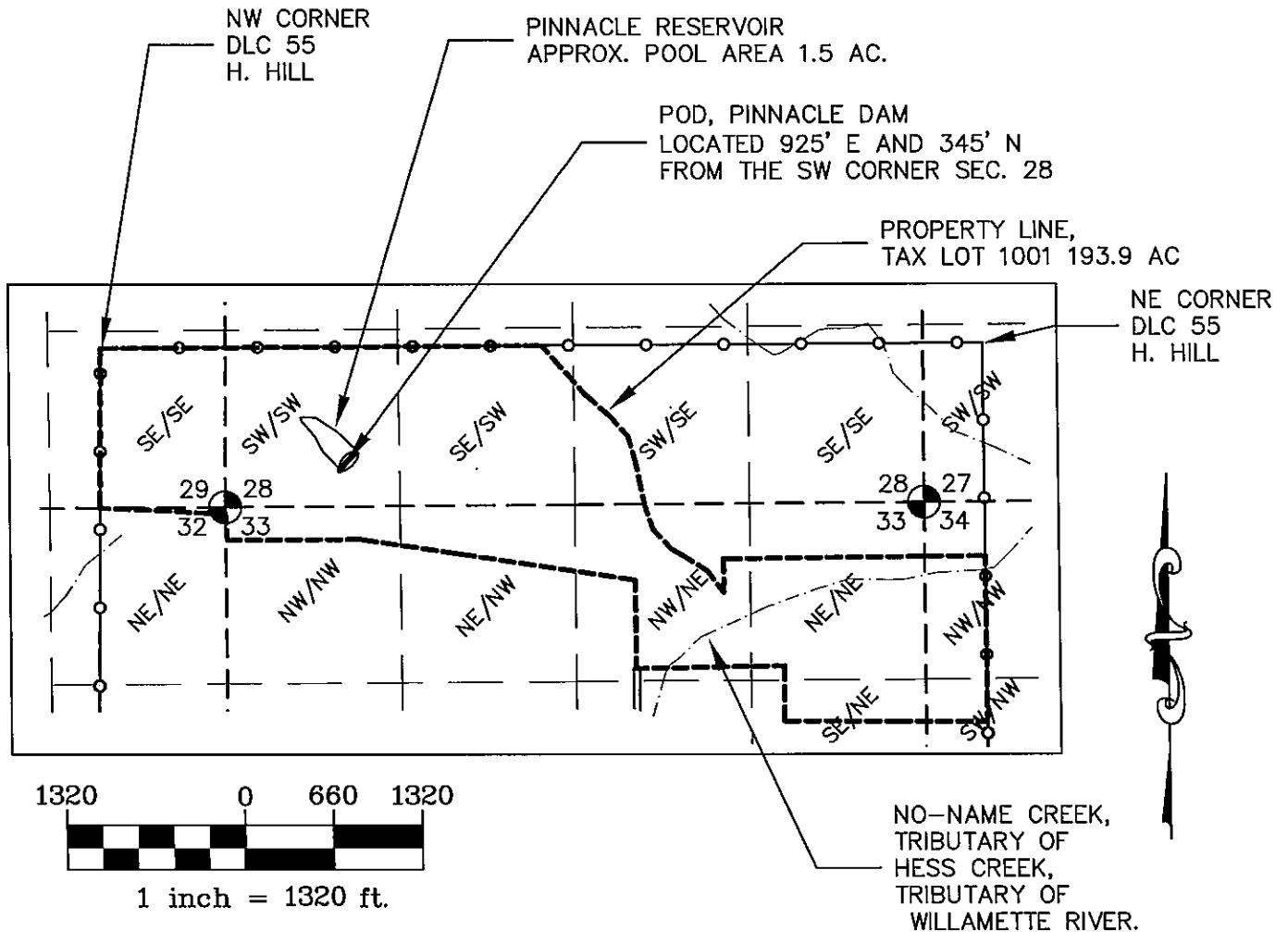


RESERVOIR APPLICATION MAP ALTERNATE PROCESS

LOCATION: T3S, R3W, SEC. 28, SW/SW, TAXLOT 1001.
WILLAMETTE MERIDIAN, YAMHILL COUNTY. DLC 55

NOTE: THIS MAP IS PRODUCED TO APPLY FOR THE BENEFICIAL USE OF A WATER RIGHT. IT IS NOT INTENDED TO PROVIDE INFORMATION RELATIVE TO THE LOCATION OF PROPERTY LINES.



APPLICANT:
DEEPWATER C&D PROPERTIES, LLC +
DOMAINE SERENE VINEYARDS & WINERY

CONTACT:
DIRECTOR OF FACILITIES AND DEVELOPMENT,
CHRIS RAMSEY 503-864-4600/1202



STUNTZNER ENGINEERING
2137 19TH AVENUE
FOREST GROVE, OR 97116
503-357-5717

JOB No.: 320-049
REVISED: 9-30-20
DRAWING NAME: DOMAINE SERENE
PINNACLE POND RES. APP.

MAP BASED ON:
TAX MAP: 3-3-28
USGS DUNDEE QUAD MAP

