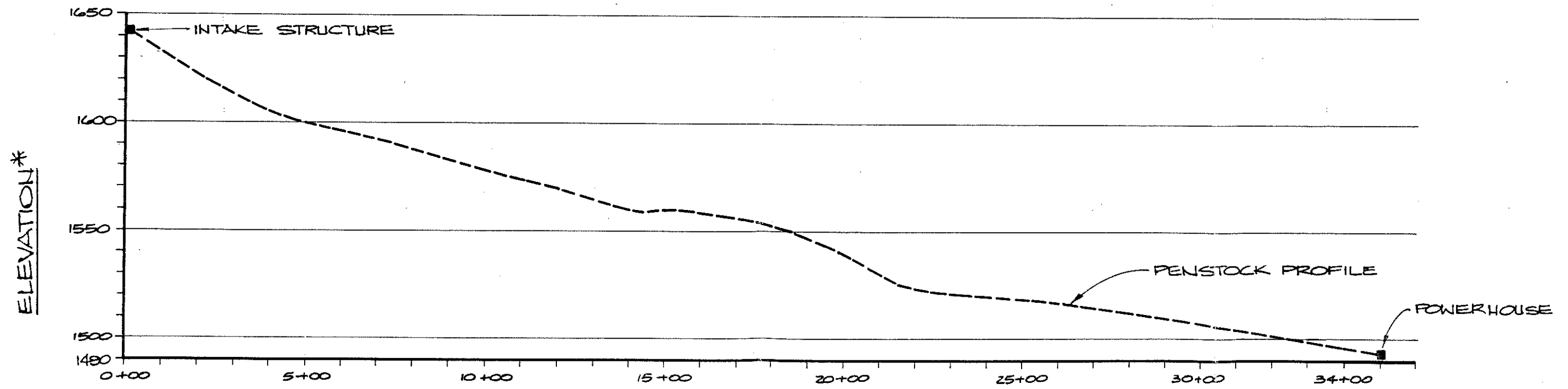


**PLAN**  
1" = 300'

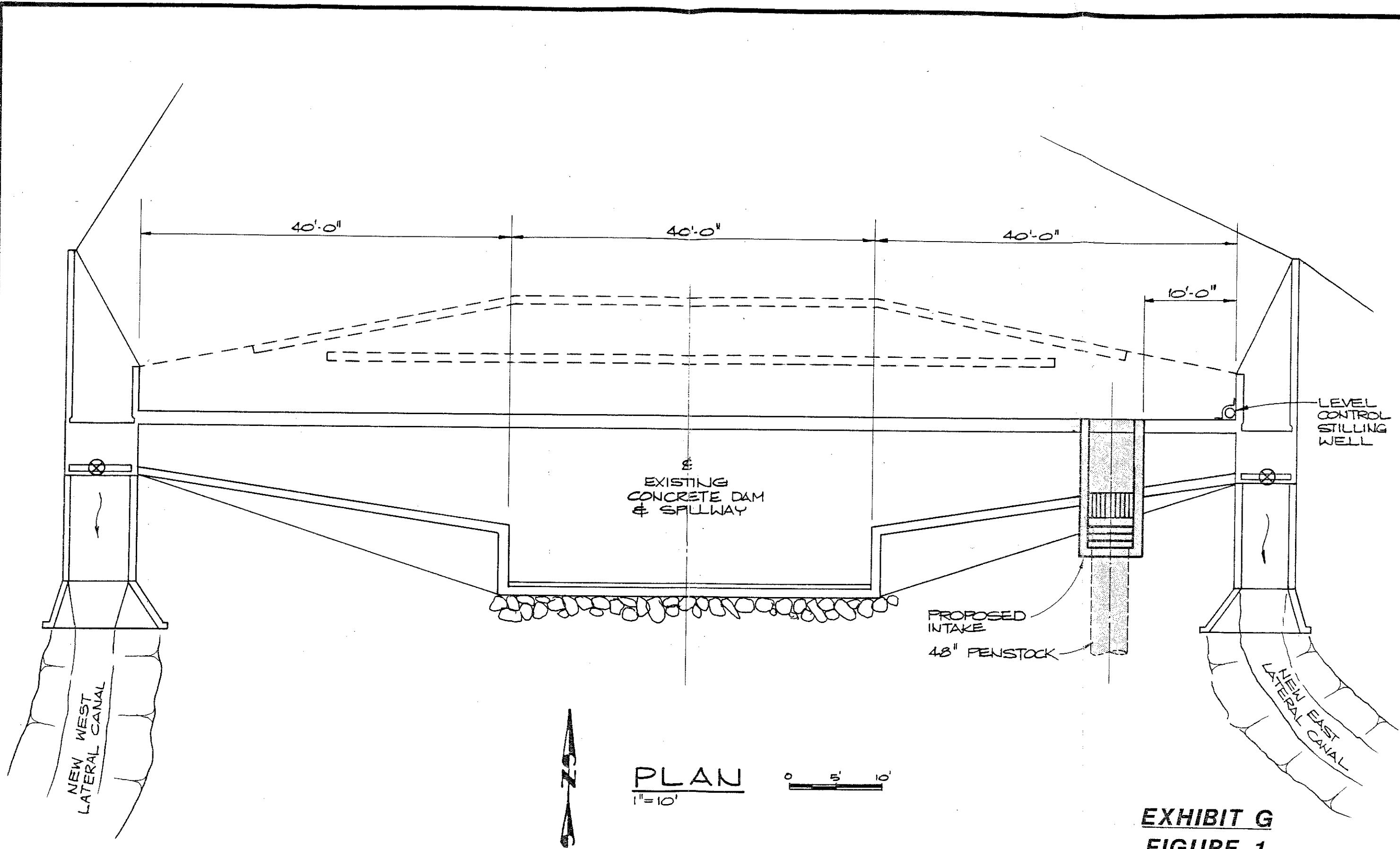


\* ELEVATIONS BASED ON LOCAL DATUM

**HORIZONTAL STATIONS PROFILE**  
HORIZ. 1" = 300'  
VERT. 1" = 50'

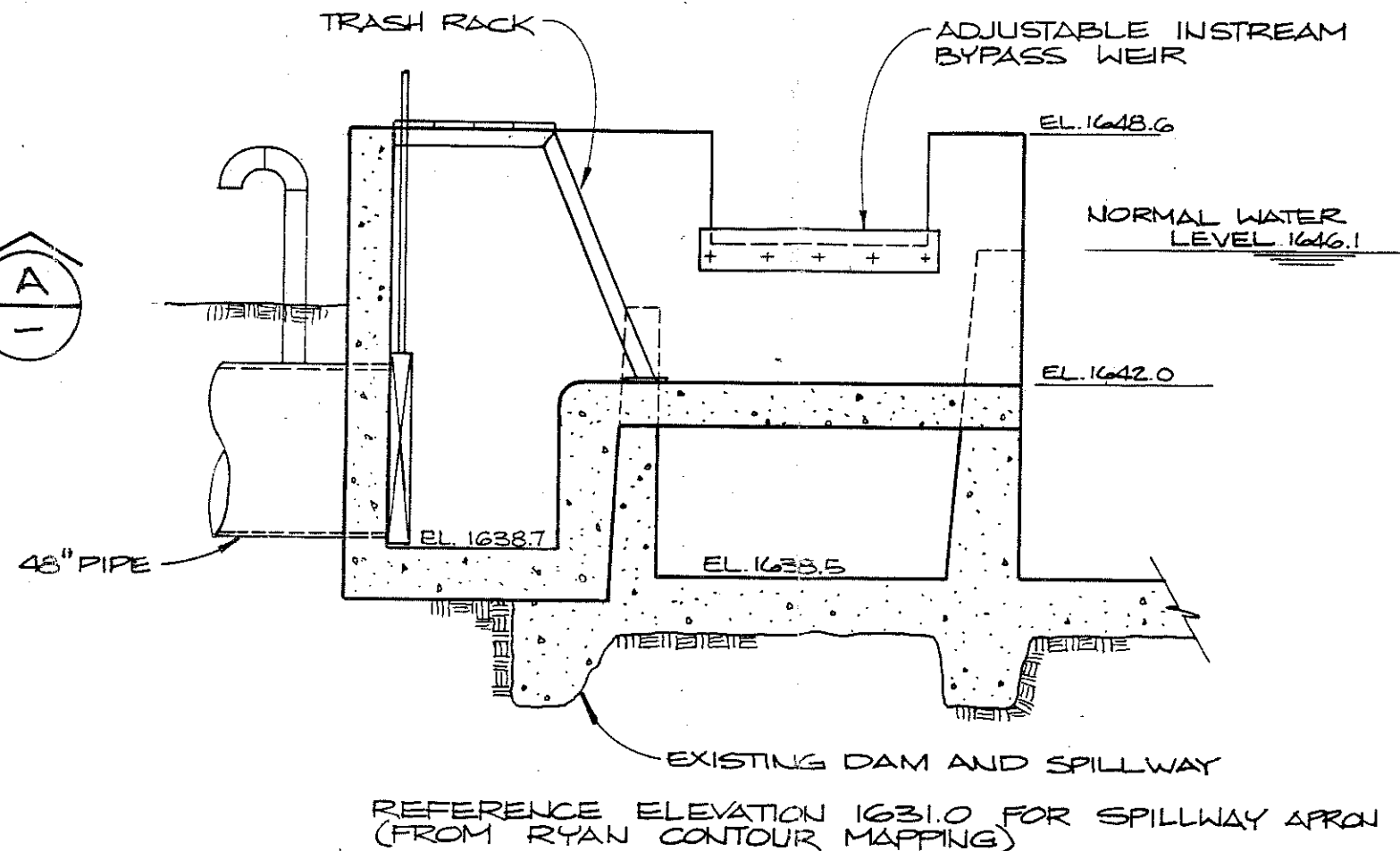
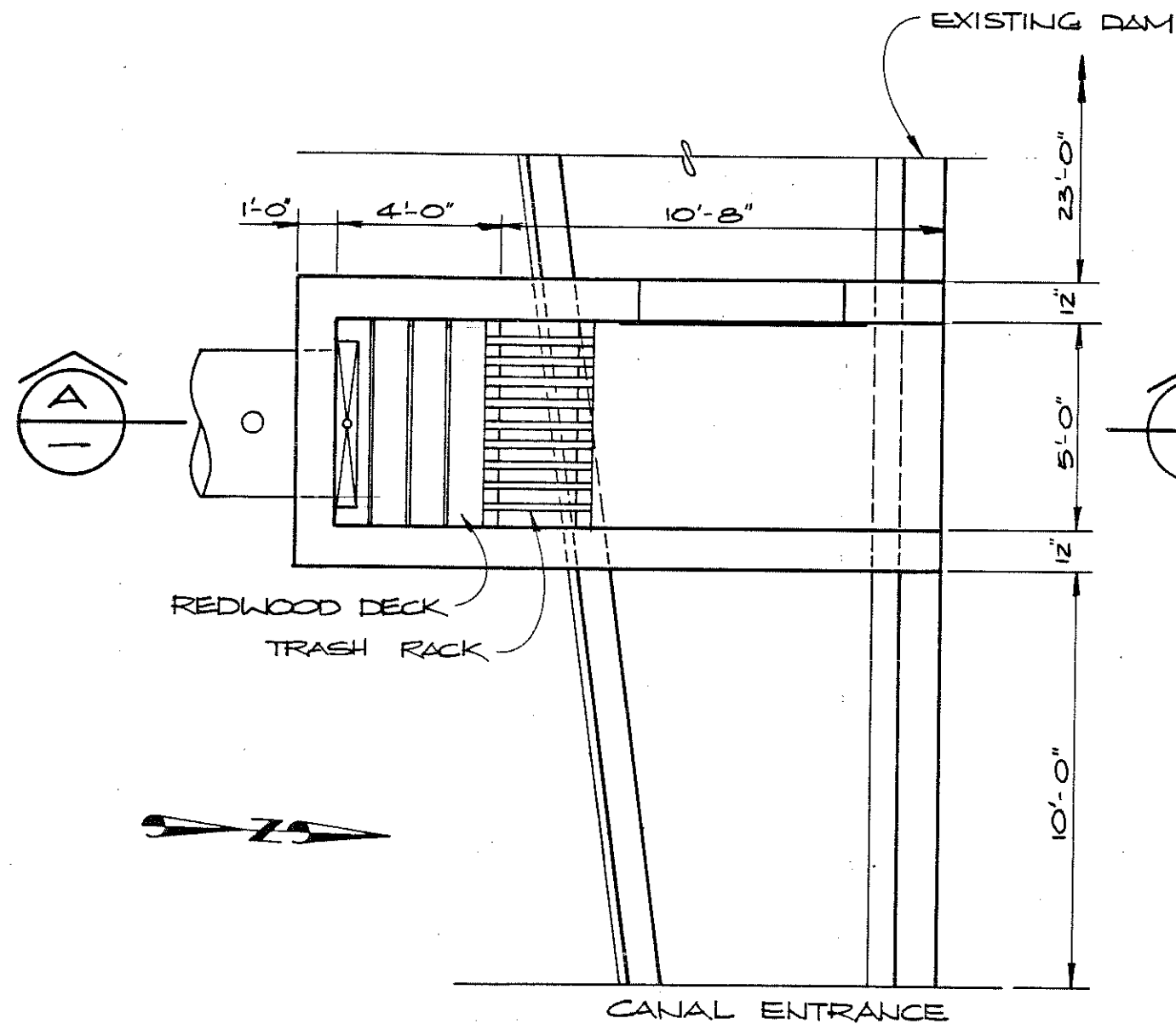
**EXHIBIT B**  
**FIGURE 2**  
**NICHOLS GAP**  
**HYDROELECTRIC PROJECT**  
**PENSTOCK PLAN & PROFILE**





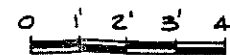
**EXHIBIT G**  
**FIGURE 1**  
 NICHOLS GAP  
 HYDROELECTRIC PROJECT  
 EXISTING DAM AND INTAKE PLAN






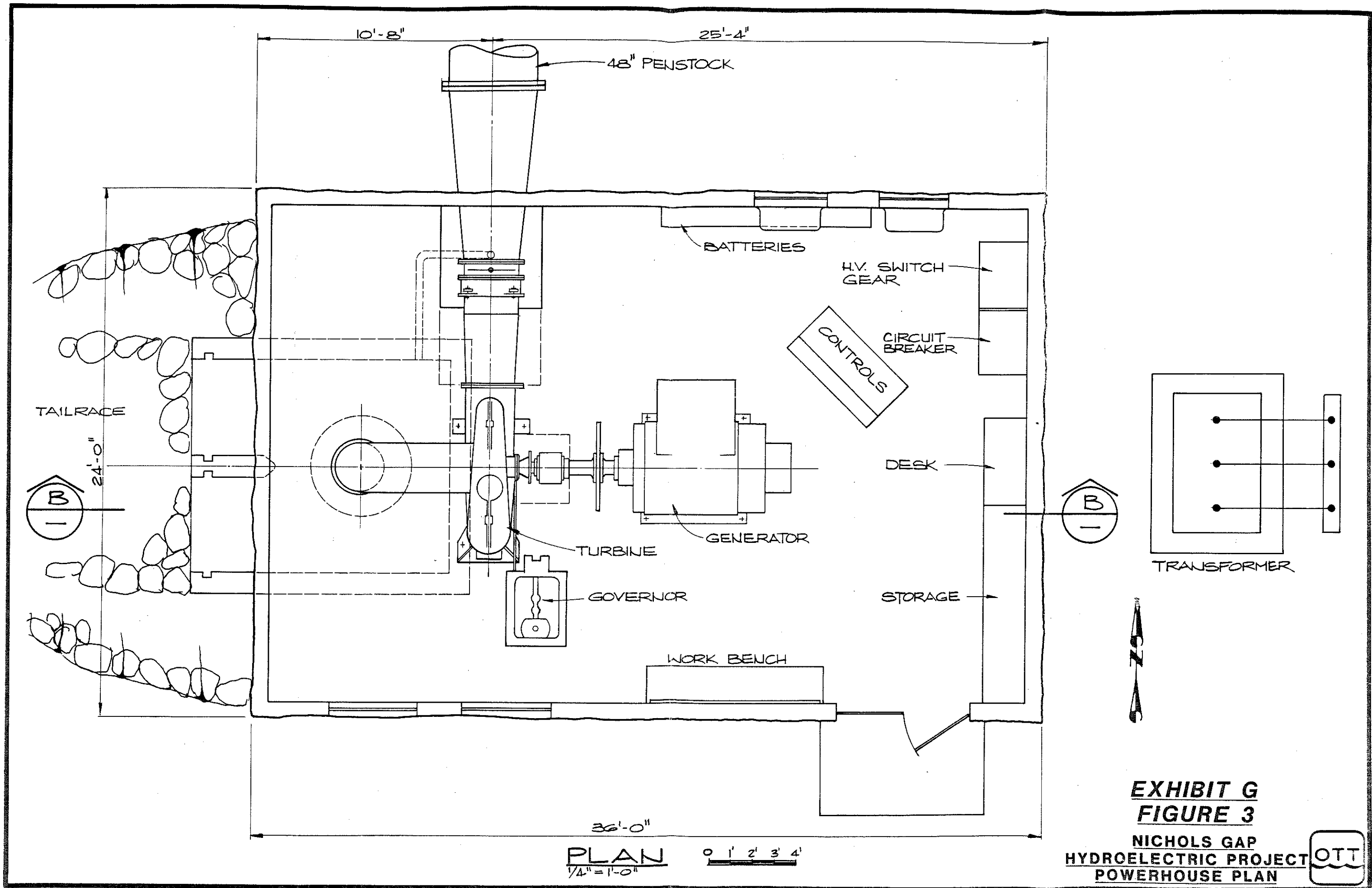
SECTION A  
1/4" = 1'-0"

INTAKE STRUCTURE  
PLAN  
1/4" = 1'-0"



**EXHIBIT G**  
**FIGURE 2**  
NICHOLS GAP  
HYDROELECTRIC PROJECT  
INTAKE STRUCTURE



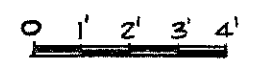


TAILRACE



24'-0"

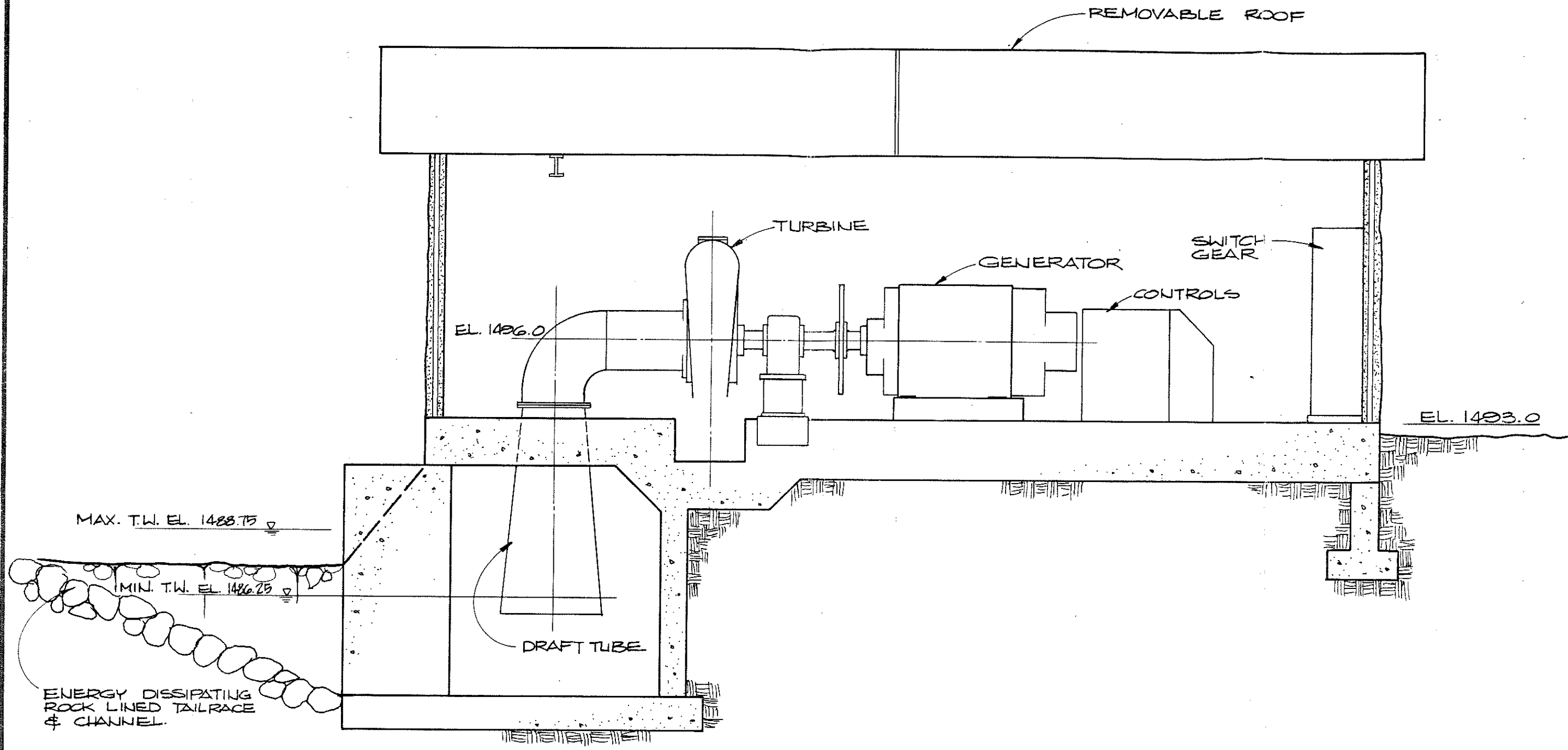
**PLAN**  
1/4" = 1'-0"



**EXHIBIT G**  
**FIGURE 3**

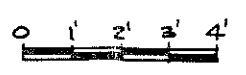
**NICHOLS GAP**  
**HYDROELECTRIC PROJECT**  
**POWERHOUSE PLAN**





SECTION (B)

1/4" = 1'-0"



**EXHIBIT G**  
**FIGURE 4**  
 NICHOLS GAP  
 HYDROELECTRIC PROJECT  
 POWERHOUSE SECTION

