

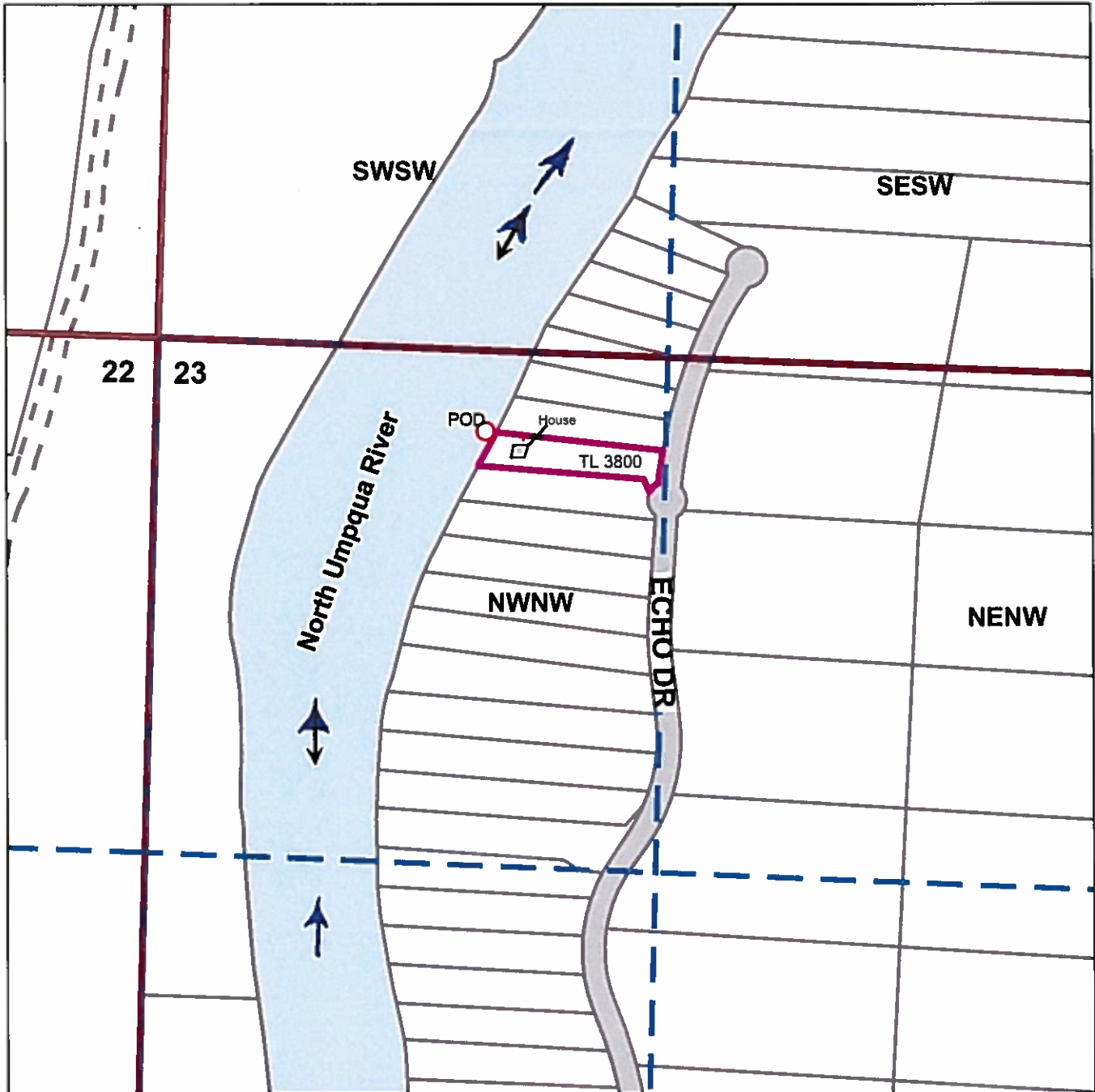
RECEIVED

DEC 18 2020

OWRD

Surface Water Application
Widmann
T.26S R.5W Section 23
Douglas County

Scale: 1"=400'



Point of Diversion is 197 ft South and 833 ft West of the NW 1/4 Section Corner of 23

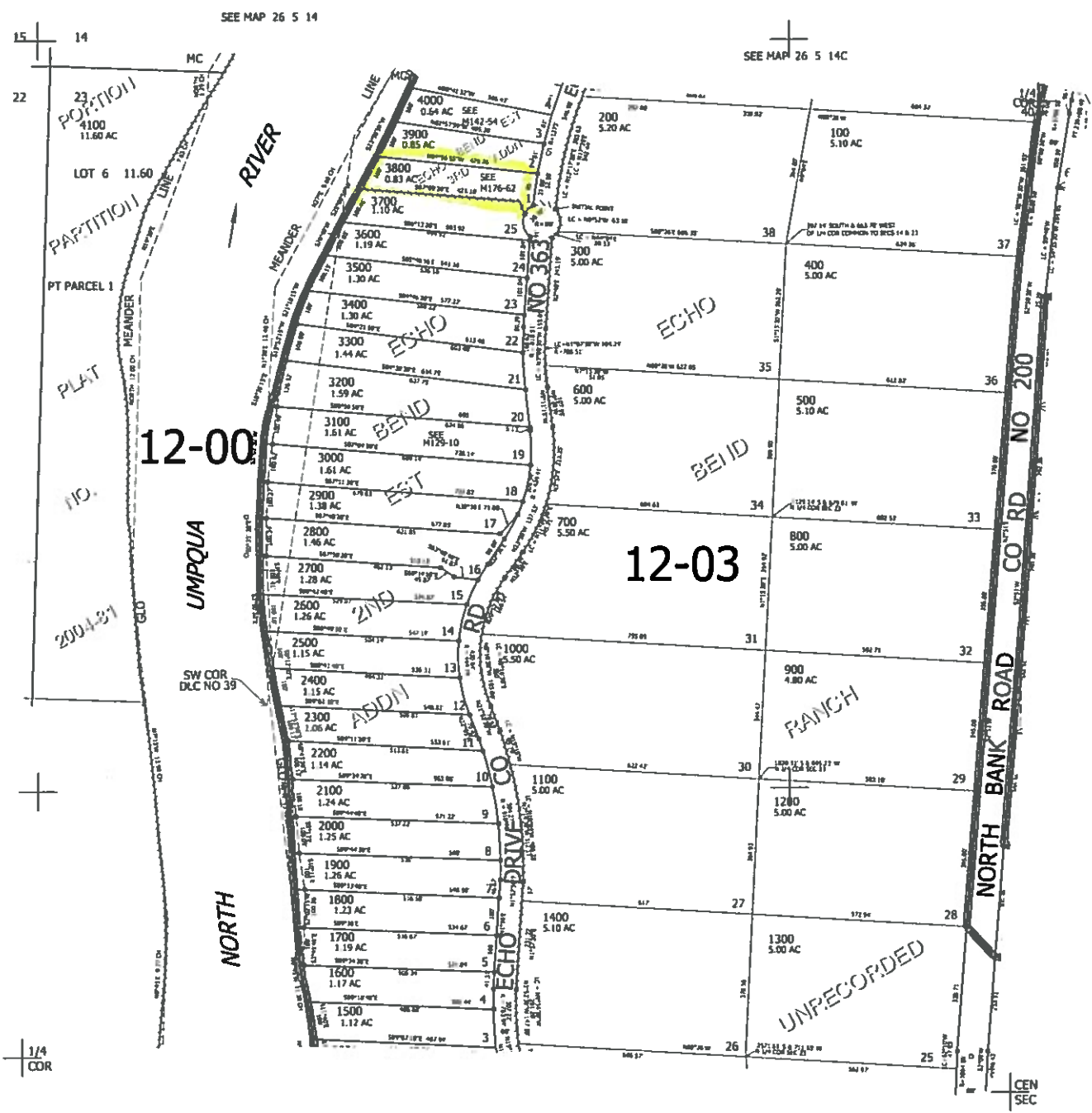
The purpose of this map is to identify
the location of a water right.
Not intended to show property ownership.

THIS MAP WAS PREPARED FOR ASSESSMENT PURPOSE ONLY.

NW1/4 SEC.23 T.26S. R.5W. W.M.
DOUGLAS COUNTY
1" = 200'

REVISED ON
3-3-05

26 5 23B



CANCELLED NO'S

SEE MAP 26 5 23A

606,000

SEE MAP 26 5 23C

4,187,000

26 5 23B

RECEIVED
DEC 18 2020
OWRD

1/4
COR

SEE MAP 26 5 22

SEE MAP 26 5 14

SEE MAP 26 5 14C