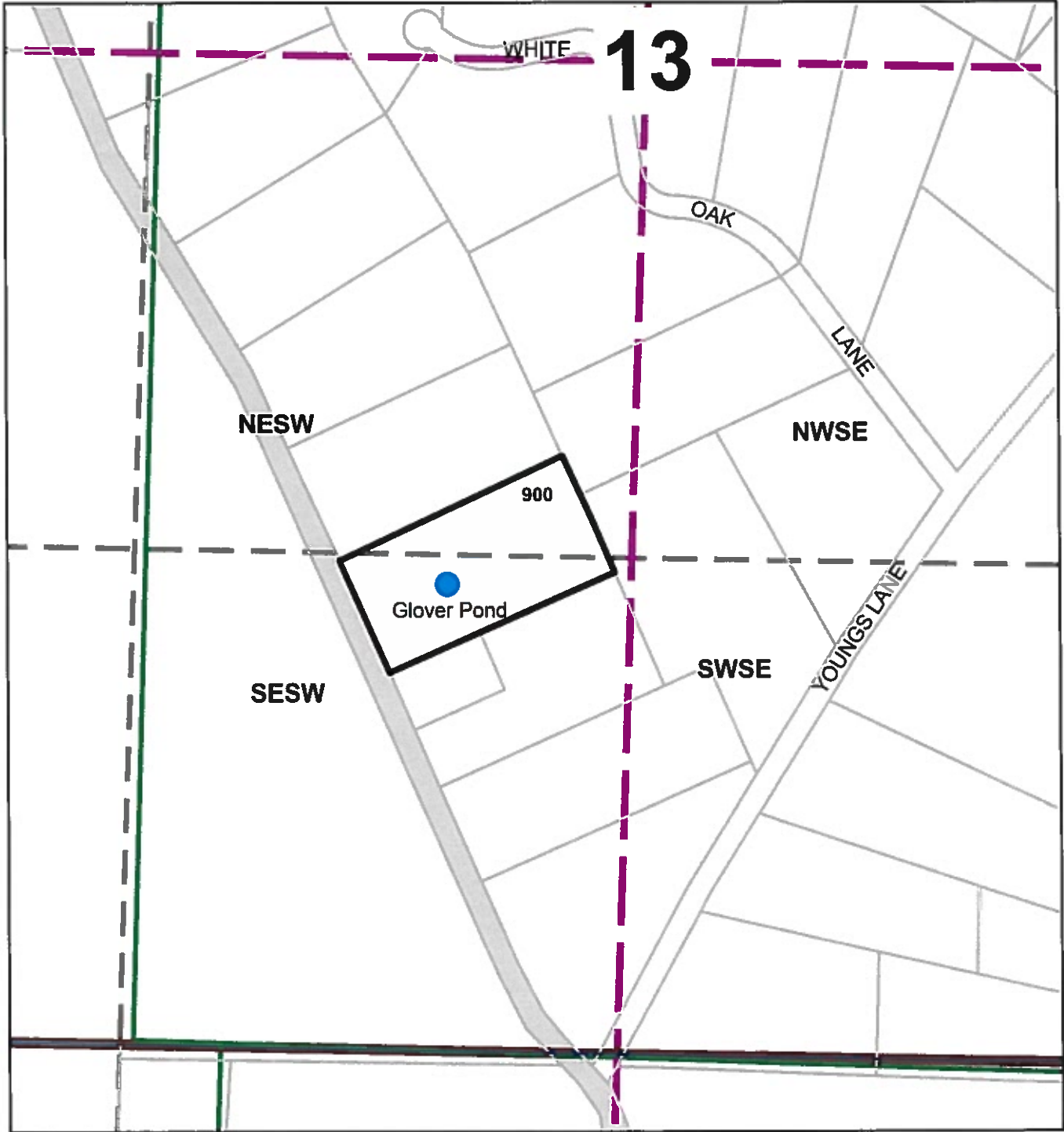




Reservoir Application  
Glover  
T.26S R.7W Section 13  
Douglas County  
Scale: 1"=400'

RECEIVED  
DEC 21 2020

OWRD



Pond is located 1416 ft South and 472 ft West of the Center of Section 13

The purpose of this map is to identify  
the location of a water right.  
Not intended to show property ownership.

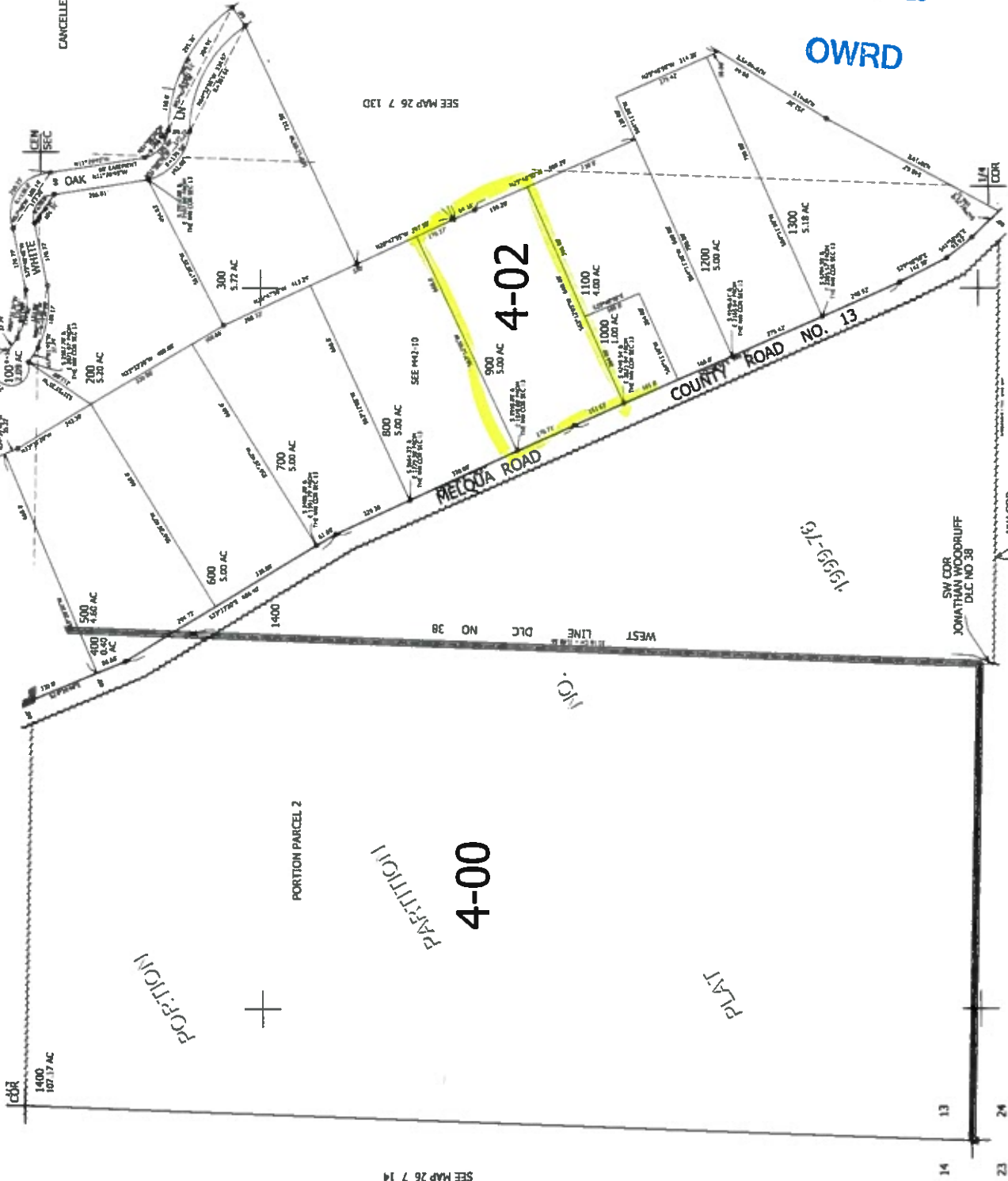
THIS MAP WAS PREPARED FOR  
ASSESSMENT PURPOSE ONLY

SW1/4 SEC.13 T.26S. R.7W. W.M.  
DOUGLAS COUNTY

REVISED ON  
9-23-99

26 7 13C

SEE MAP 26 7 13B



SEE MAP 26 7 13D

SEE MAP 26 7 14

RECEIVED  
DEC 21 2020  
OWRD

610,000

4,129,000

SEE MAP 26 7 24B

26 7 13C

SW COR  
JONATHAN WOODRUFF  
DLC NO 38

NW COR  
DLC NO 46

1999-76

PORTION

PORTION PARCEL 2

PARTITION

4-00

PLAT

NO.

4-02

WEST LINE  
DLC NO 38

COUNTY ROAD NO. 13

MELQUA ROAD

CANCELLED NOS

OAK

WHITE

GEN SEC

100 AC

200 AC

300 AC

400 AC

500 AC

600 AC

700 AC

800 AC

900 AC

1000 AC

1100 AC

1200 AC

1300 AC

1400 AC

1500 AC

1600 AC

1700 AC

1800 AC