



Oregon Water Resources Department
 725 Summer Street NE, Suite A
 Salem, Oregon 97301
 (503) 986-0900
 www.wrd.state.or.us

Ownership Update For Certificated Rights Only

NO FEES ARE REQUIRED TO SUBMIT THIS FORM

NOTICE: A certificate of water right typically stays with the land. In order to track water right ownership, the Department requests that this form be submitted to the Department. **To update multiple rights, a separate form is required for each right.**

If you have any questions about this form, please contact your local watermaster, or call the Water Resources Department at (503) 986-0900.

This form is not for Applications, Permits, Transfers, Groundwater Registrations, or Limited Licenses. To notify the Department of changes in ownership to these types of authorizations, an Assignment is required.

Current Landowner Information

Name: WESTERN RIVERS CONSERVANCY
 Mailing Address: 71 SW OAK STREET, SUITE 100
 City: PORTLAND State: OR Zip: 97204
 Phone (Home): _____ Work: (503) 241-0151 Other: _____

Property Description

County: KLAMATH Township: 30S Range: 10E Section: 8, 9, 16, 17, 18, 19, 20
 Taxlot Number(s): R-3010-00000-01500-010; R-3010-02000-00200-000; R-3010-02000-00100-000
 Street Address of water right property: 21310 and 21320 Silver Lake Rd, Chilquin OR 97624
 Water Right Information: Application: _____ Permit: 9592 Certificate #: 11956

Are all the lands associated with this water right owned by the requester? Yes No _____ If No, include a map showing the portion of the right involved.

Name of individual completing this form: ZACH SPECTER, PROJ. OPERATIONS DIR. Phone: (503) 241-0151

Signature of requestor:  Date: 11-13-19

The Department does not change names on certificates. This form will be placed in the file for future reference only. The Department does not provide acknowledgement that this form has been received.

RECEIVED

NOV 18 2019

OWRD

STATE OF OREGON
 COUNTY OF KLAMATH
CERTIFICATE OF WATER RIGHT

This Is to Certify, That **WILLIAM KITTEDGE**
 of **Silver Lake**, State of **Oregon**, has made proof
 to the satisfaction of the **STATE ENGINEER** of Oregon, of a right to the use of the waters of
Williamson River
 a tributary of **Upper Klamath Lake** for the purpose of
Irrigation and stock
 under **Permit No. 9592** of the State Engineer, and that said right to the use of said waters
 has been perfected in accordance with the laws of Oregon; that the priority of the right hereby
 confirmed dates from **April 16, 1950;**

that the amount of water to which such right is entitled and hereby confirmed, for the purposes
 aforesaid, is limited to an amount actually beneficially used for said purposes and shall not exceed
85.98 cubic feet per second measured at the point of diversion from the stream,

The point of diversion is located in the **One in the NE $\frac{1}{4}$ NW $\frac{1}{4}$, Section 18, T. 30 S., R. 10 E.,**
W. M., Four in the NW $\frac{1}{4}$ NW $\frac{1}{4}$, Section 18, T. 30 S., R. 10 E., W. M., One in the
SW $\frac{1}{4}$ SE $\frac{1}{4}$, Section 18, T. 30 S., R. 10 E., W. M., One in the SW $\frac{1}{4}$ NE $\frac{1}{4}$, Section 19,
T. 30 S., R. 10 E., W. M. and Three in the NE $\frac{1}{4}$ NW $\frac{1}{4}$, Section 24, T. 30 S., R. 9 E., W. M.

The amount of water used for irrigation, together with the amount secured under any other
 right existing for the same lands, shall be limited to **one-eightieth** of one cubic foot per second
 per acre,

and shall

conform to such reasonable rotation system as may be ordered by the proper state officer.

A description of the place of use under the right hereby confirmed, and to which such right
 is appurtenant, is as follows:

- 40 acres in the SE $\frac{1}{4}$ SE $\frac{1}{4}$,
Section 10,
- 40 acres in the SW $\frac{1}{4}$ SW $\frac{1}{4}$,
- 40 acres in the SE $\frac{1}{4}$ SW $\frac{1}{4}$,
- 40 acres in the SW $\frac{1}{4}$ SE $\frac{1}{4}$,
Section 11,
- 40 acres in the NW $\frac{1}{4}$ NE $\frac{1}{4}$,
- 40 acres in the SW $\frac{1}{4}$ NE $\frac{1}{4}$,
- 40 acres in the NE $\frac{1}{4}$ NW $\frac{1}{4}$,
- 40 acres in the NW $\frac{1}{4}$ NW $\frac{1}{4}$,
- 40 acres in the SW $\frac{1}{4}$ NW $\frac{1}{4}$,
- 40 acres in the SE $\frac{1}{4}$ NW $\frac{1}{4}$,
- 40 acres in the NE $\frac{1}{4}$ SW $\frac{1}{4}$,
- 40 acres in the SW $\frac{1}{4}$ SW $\frac{1}{4}$,
- 40 acres in the SE $\frac{1}{4}$ SW $\frac{1}{4}$,
- 40 acres in the NW $\frac{1}{4}$ SE $\frac{1}{4}$,
- 40 acres in the SW $\frac{1}{4}$ SE $\frac{1}{4}$,
Section 14,
- 40 acres in the NE $\frac{1}{4}$ NE $\frac{1}{4}$,
- 40 acres in the NW $\frac{1}{4}$ NE $\frac{1}{4}$,
- 40 acres in the SE $\frac{1}{4}$ NE $\frac{1}{4}$,
- 40 acres in the SE $\frac{1}{4}$ NE $\frac{1}{4}$,
- 40 acres in the NE $\frac{1}{4}$ NW $\frac{1}{4}$,
- 40 acres in the SE $\frac{1}{4}$ NW $\frac{1}{4}$,
- 40 acres in the NE $\frac{1}{4}$ SW $\frac{1}{4}$,
- 40 acres in the NW $\frac{1}{4}$ SW $\frac{1}{4}$,
- 40 acres in the SE $\frac{1}{4}$ SW $\frac{1}{4}$,
- 40 acres in the NE $\frac{1}{4}$ SE $\frac{1}{4}$,
- 40 acres in the NW $\frac{1}{4}$ SE $\frac{1}{4}$,
- 40 acres in the SW $\frac{1}{4}$ SE $\frac{1}{4}$,
- 40 acres in the SE $\frac{1}{4}$ SE $\frac{1}{4}$,
Section 15,

RECEIVED

NOV 18 2019

OWRD

40 acres in the NE $\frac{1}{4}$ NE $\frac{1}{4}$,
 54.7 acres in the NW $\frac{1}{4}$ NE $\frac{1}{4}$,
 55.3 acres in the SW $\frac{1}{4}$ NE $\frac{1}{4}$,
 40 acres in the SE $\frac{1}{4}$ NE $\frac{1}{4}$,
 40 acres in the NE $\frac{1}{4}$ NW $\frac{1}{4}$,
 40 acres in the NW $\frac{1}{4}$ NW $\frac{1}{4}$,
 40 acres in the SW $\frac{1}{4}$ NW $\frac{1}{4}$,
 40 acres in the SE $\frac{1}{4}$ NW $\frac{1}{4}$,
 40 acres in the NE $\frac{1}{4}$ SW $\frac{1}{4}$,
 40 acres in the NW $\frac{1}{4}$ SW $\frac{1}{4}$,
 32.4 acres in the SW $\frac{1}{4}$ SW $\frac{1}{4}$,
 40 acres in the SE $\frac{1}{4}$ SW $\frac{1}{4}$,
 40 acres in the NE $\frac{1}{4}$ SE $\frac{1}{4}$,
 40 acres in the NW $\frac{1}{4}$ SE $\frac{1}{4}$,
 40 acres in the SW $\frac{1}{4}$ SE $\frac{1}{4}$,
 40 acres in the SE $\frac{1}{4}$ SE $\frac{1}{4}$,

623.40

Section 17,

51.5 acres in the NE $\frac{1}{4}$ NE $\frac{1}{4}$,
 21.4 acres in the SE $\frac{1}{4}$ NE $\frac{1}{4}$,
 9.5 acres in the SE $\frac{1}{4}$ SW $\frac{1}{4}$,
 51.5 acres in the NE $\frac{1}{4}$ SE $\frac{1}{4}$,
 29 acres in the SW $\frac{1}{4}$ SE $\frac{1}{4}$,
 40 acres in the SE $\frac{1}{4}$ SE $\frac{1}{4}$,

153

Section 18,

50.4 acres in the NE $\frac{1}{4}$ NE $\frac{1}{4}$,
 40 acres in the NW $\frac{1}{4}$ NE $\frac{1}{4}$,
 37.5 acres in the SW $\frac{1}{4}$ NE $\frac{1}{4}$,
 3.5 acres in the SE $\frac{1}{4}$ NE $\frac{1}{4}$,
 35.2 acres in Lot 2 (SW $\frac{1}{4}$ NW $\frac{1}{4}$),
 40 acres in the SE $\frac{1}{4}$ NW $\frac{1}{4}$,
 31.8 acres in the NE $\frac{1}{4}$ SW $\frac{1}{4}$,
 35 acres in Lot 3 (NW $\frac{1}{4}$ SW $\frac{1}{4}$),
 32.8 acres in Lot 4 (SW $\frac{1}{4}$ SW $\frac{1}{4}$),
 15.5 acres in the SE $\frac{1}{4}$ SW $\frac{1}{4}$,

111.40

Section 19,

40 acres in the NE $\frac{1}{4}$ NE $\frac{1}{4}$,
 29.7 acres in the NW $\frac{1}{4}$ NE $\frac{1}{4}$,
 28.3 acres in the SE $\frac{1}{4}$ NE $\frac{1}{4}$,

98.0

Section 20,

7 acres in the NE $\frac{1}{4}$ NW $\frac{1}{4}$,
 39.5 acres in the NW $\frac{1}{4}$ NW $\frac{1}{4}$,
 20 acres in the SW $\frac{1}{4}$ NW $\frac{1}{4}$,

66.5

Section 21,

1,052.30 - Timberman Land

27.5 acres in the NE $\frac{1}{4}$ NW $\frac{1}{4}$,
 52.4 acres in Lot 1 (NW $\frac{1}{4}$ NW $\frac{1}{4}$),
 52.4 acres in Lot 2 (SW $\frac{1}{4}$ NW $\frac{1}{4}$),
 31 acres in the SE $\frac{1}{4}$ NW $\frac{1}{4}$,
 15.8 acres in the NE $\frac{1}{4}$ SW $\frac{1}{4}$,
 9.6 acres in Lot 3 (SW $\frac{1}{4}$ SW $\frac{1}{4}$),
 Section 20,
 Township 50 South, Range 10 East, W. M.,
 being a total of 6,716.5 acres.

The right to the use of the water for the purposes aforesaid is restricted to the lands or place of use herein described.
 After the expiration of fifty years from the date of this certificate or on the expiration of any federal power license issued in connection with this right, and after not less than two years' notice in writing to the holder hereof, the State of Oregon, or any municipality thereof, shall have the right to take over the dams, plants and other structures and all appurtenances thereto which have been constructed for the purpose of devoting to beneficial use the water rights specified herein, upon condition that before taking possession the State or municipality shall pay not to exceed the fair value of the property so taken, plus such reasonable damages, if any, to valuable, serviceable and dependable property of the holder of this certificate, not taken over, as may be caused by the severance therefrom of the property taken in accordance with the provisions of section 47-508, Oregon Code 1930.

WITNESS the signature of the State Engineer, affixed
 this 8th day of March, 1938.

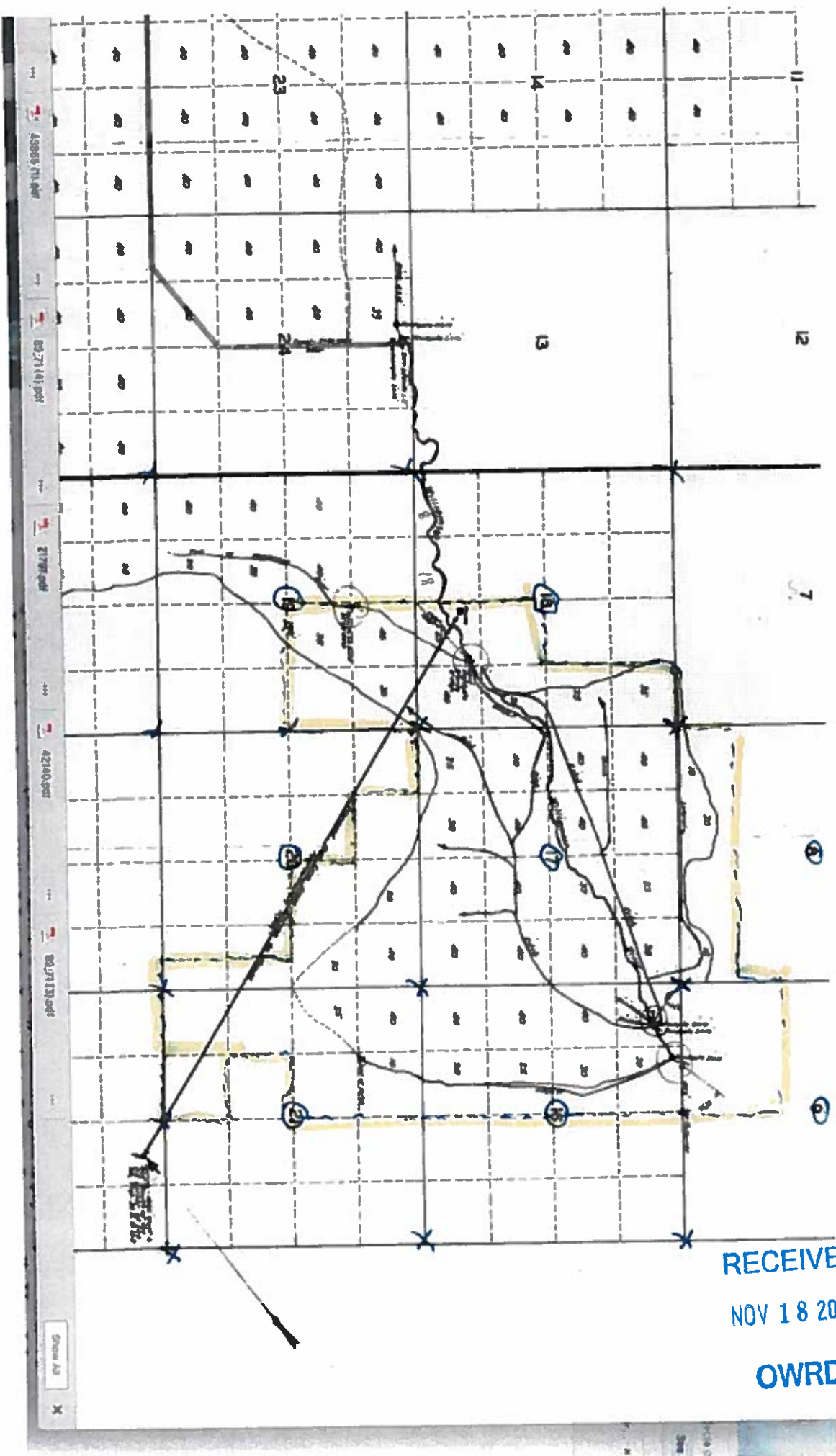
CHAS. E. STRICKLIN
 State Engineer

RECEIVED
 NOV 18 2019
 OWRD

40 acres in the NW₁SW₁,
 40 acres in the NE₁SE₁,
 40 acres in the SW₁SE₁,
 40 acres in the SE₁SE₁,
 Section 16,
 20 acres in the SW₁NE₁,
 40 acres in the SE₁NE₁,
 40 acres in the NE₁NE₁,
 Section 17,
 40 acres in the NE₁NE₁,
 40 acres in the NW₁NE₁,
 40 acres in the SW₁NE₁,
 40 acres in the SE₁NE₁,
 40 acres in the SW₁NW₁,
 40 acres in the NE₁SW₁,
 40 acres in the SE₁SW₁,
 40 acres in the NE₁SE₁,
 40 acres in the NW₁SE₁,
 40 acres in the SW₁SE₁,
 40 acres in the SE₁SE₁,
 Section 21,
 40 acres in the NE₁NE₁,
 40 acres in the NW₁NE₁,
 40 acres in the SW₁NE₁,
 40 acres in the SE₁NE₁,
 40 acres in the NE₁NW₁,
 40 acres in the NW₁NW₁,
 40 acres in the SW₁NW₁,
 40 acres in the SE₁NW₁,
 40 acres in the NE₁SW₁,
 40 acres in the NW₁SW₁,
 40 acres in the SW₁SW₁,
 40 acres in the SE₁SW₁,
 40 acres in the NE₁SE₁,
 40 acres in the NW₁SE₁,
 40 acres in the SW₁SE₁,
 40 acres in the SE₁SE₁,
 Section 22,
 40 acres in the NE₁NE₁,
 40 acres in the NW₁NE₁,
 40 acres in the SW₁NE₁,
 40 acres in the SE₁NE₁,
 40 acres in the NE₁NW₁,
 40 acres in the NW₁NW₁,
 40 acres in the SW₁NW₁,
 40 acres in the SE₁NW₁,
 40 acres in the NE₁SW₁,
 40 acres in the NW₁SW₁,
 40 acres in the SW₁SW₁,
 40 acres in the SE₁SW₁,
 40 acres in the NE₁SE₁,
 40 acres in the NW₁SE₁,
 40 acres in the SW₁SE₁,
 40 acres in the SE₁SE₁,
 Section 23,
 40 acres in the NE₁NW₁,
 40 acres in the NW₁NW₁,
 40 acres in the SW₁NW₁,
 40 acres in the SE₁NW₁,
 40 acres in the NE₁SW₁,
 40 acres in the NW₁SW₁,
 40 acres in the SW₁SW₁,
 40 acres in the SE₁SW₁,
 Section 24,
 40 acres in the NE₁NE₁,
 40 acres in the NW₁NE₁,
 28.5 acres in the SW₁NE₁,
 38.5 acres in the SE₁NE₁,
 40 acres in the NE₁NW₁,
 40 acres in the NW₁NW₁,

40 acres in the SW₁NW₁,
 40 acres in the SE₁NW₁,
 36.2 acres in the NE₁SW₁,
 40 acres in the NW₁SW₁,
 40 acres in the SW₁SW₁,
 39.3 acres in the SE₁SW₁,
 51.4 acres in the NE₁SE₁,
 1.9 acres in the NW₁SE₁,
 30.4 acres in the SW₁SE₁,
 40 acres in the SE₁SE₁,
 Section 25,
 40 acres in the NE₁NE₁,
 40 acres in the NW₁NE₁,
 40 acres in the SW₁NE₁,
 40 acres in the SE₁NE₁,
 40 acres in the NE₁NW₁,
 40 acres in the NW₁NW₁,
 21.2 acres in the SW₁NW₁,
 40 acres in the SE₁NW₁,
 40 acres in the NE₁SE₁,
 40 acres in the NW₁SE₁,
 40 acres in the SW₁SE₁,
 40 acres in the SE₁SE₁,
 Section 26,
 40 acres in the NE₁NE₁,
 40 acres in the NW₁NE₁,
 21.3 acres in the SW₁NE₁,
 24.9 acres in the SE₁NE₁,
 40 acres in the NE₁NW₁,
 58 acres in the NW₁NW₁,
 2 acres in the SW₁NW₁,
 14 acres in the SE₁NW₁,
 Section 27,
 32.9 acres in the NE₁NE₁,
 13.9 acres in the NW₁NE₁,
 25.6 acres in the NE₁NW₁,
 20 acres in the NW₁SW₁,
 20 acres in the SE₁SW₁,
 Section 28,
 10 acres in the SW₁NE₁,
 15 acres in Lot 1 (NE₁NW₁),
 26 acres in Lot 2 (SE₁NW₁),
 18.2 acres in Lot 3 (NE₁SW₁),
 12 acres in the NW₁SE₁,
 25 acres in Lot 5 (SW₁SE₁),
 Section 33,
 33.7 acres in the NE₁NE₁,
 8.8 acres in the NW₁NE₁,
 Section 36,
 Township 50 South, Range 9 East, W. M.,
 15.5 acres in the SW₁SW₁,
 34.7 acres in the SE₁SW₁,
 10.7 acres in the SW₁SE₁,
 6.2 acres in the SE₁SE₁,
 Section 8,
 13 acres in the NE₁NW₁,
 40 acres in the NW₁NW₁,
 40 acres in the SW₁NW₁,
 25 acres in the SE₁NW₁,
 25.6 acres in the NE₁SW₁,
 40 acres in the NW₁SW₁,
 40 acres in the SW₁SW₁,
 22.5 acres in the SE₁SW₁,
 Section 15,

RECEIVED
 NOV 18 2019
 OWRD

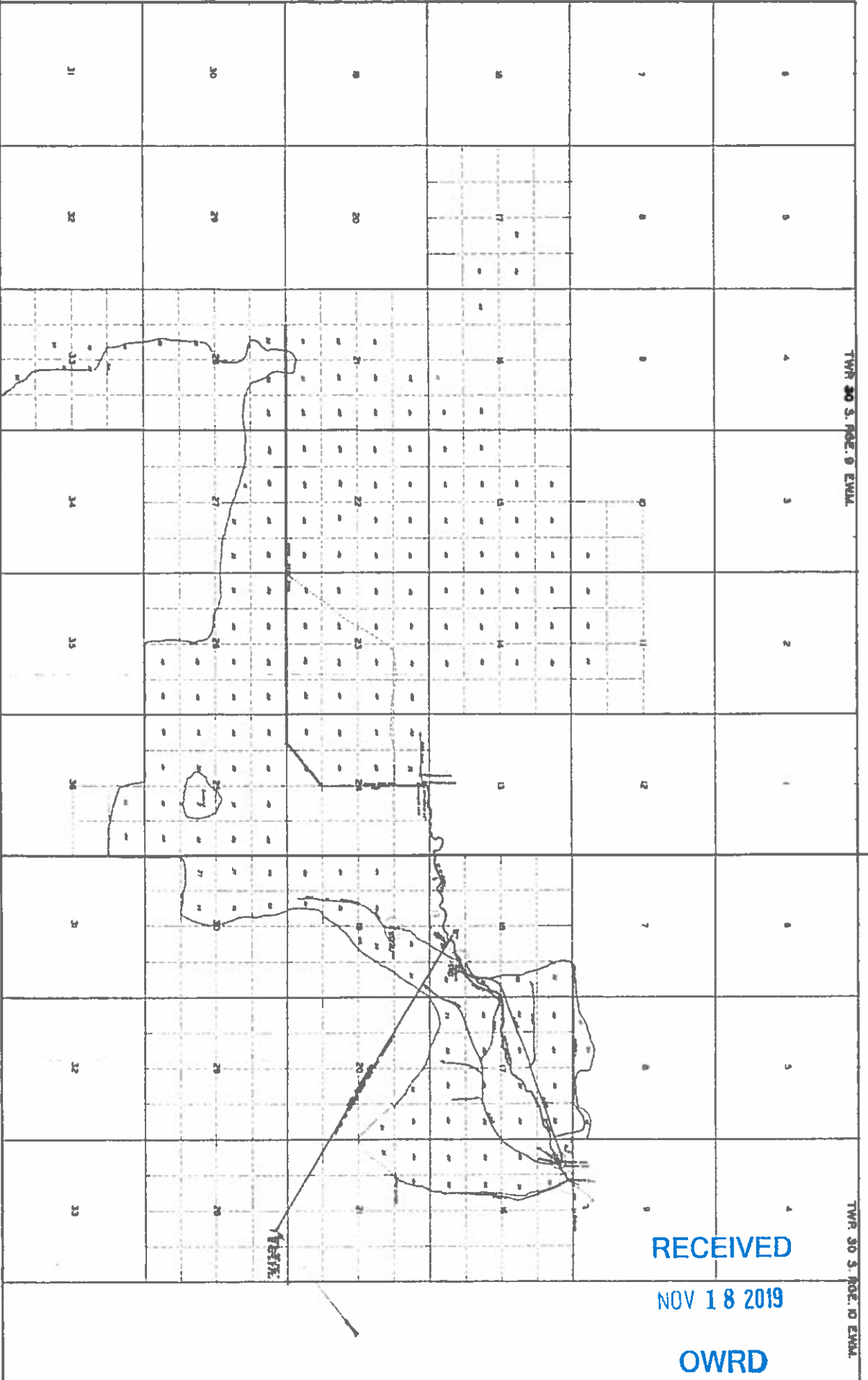


43885711.pnt
 8827141.pnt
 21787.pnt
 42140.pnt
 82111.pnt
 Show All X

1,052.30 - sees 17,18,19,20,21

RECEIVED
 NOV 18 2019
 OWRD

KITTNEEDGE DITCHES



RECEIVED
NOV 18 2019
OWRD

Department of Agriculture
Division of Land Management
Kittneedge Ditches

RGE. 9 EWM.
RGE. 10 EWM.

Map of the Kittneedge Ditches
showing the location of the
ditches and the land parcels
affected by the ditches.

Approved: N-1380
10/20/18
10/20/18