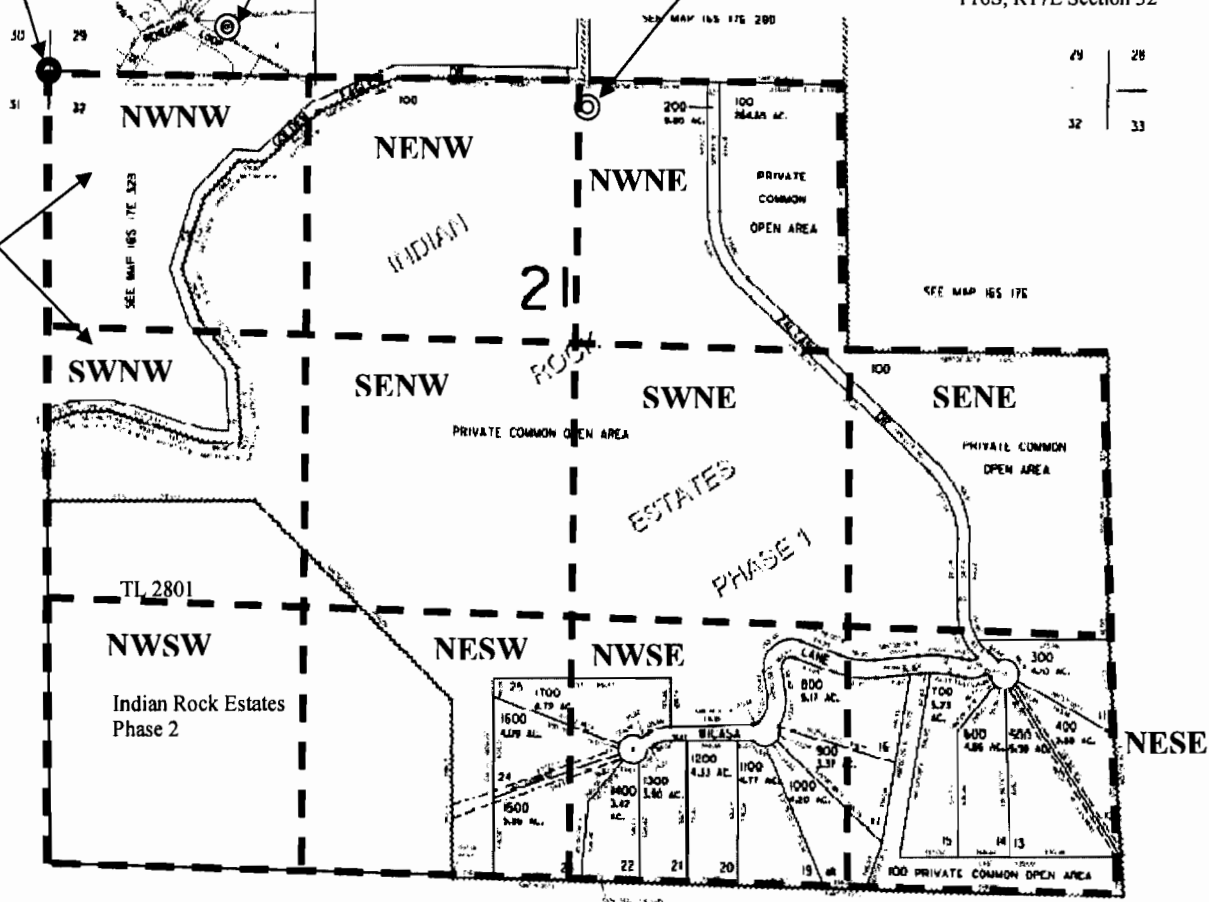


Place of use
includes all
mapped areas
EXCEPT
Northeast of
Golden Eagle
Drive



Groundwater Application Map For Indian Rock Estates, Phases 1 & 2

© Approximate Well Location ● Corner Marker

T16S R17E Section 32

1 inch equals 800 feet

May 10, 2007

Deschutes Irrigation, LLC

P.O. Box 1830

Bend, OR 97709

541-389-2837

waterrights@usa.com

RECEIVED

MAY 21 2007

WATER RESOURCES DEPT
SALEM, OREGON