

IN GOVERNMENT LOT 4, SECTION 29, TOWNSHIP
 2 SOUTH, RANGE 3 WEST, WILLAMETTE MERIDIAN.
 1/4 1/4 : NW 1/4 of the SE 1/4, Section 29

TAXLOT: R232900601

AREA OF USE FOR PRIMARY IRRIGATION : 23 AC

LEGEND

- EXISTING CONTOUR - 2'
- EXISTING CONTOUR - 10'
- PROPOSED CONTOUR - 2'
- PROPOSED CONTOUR - 10'
- AREA OF USE
- FLOW ARROW

STAMP

CONSULTANT

RIDGECREST VINEYARDS
 WATER USE PLAN
 SURFACE WATER APPLICATION - YAMHILL COUNTY
RESERVOIR RR-A

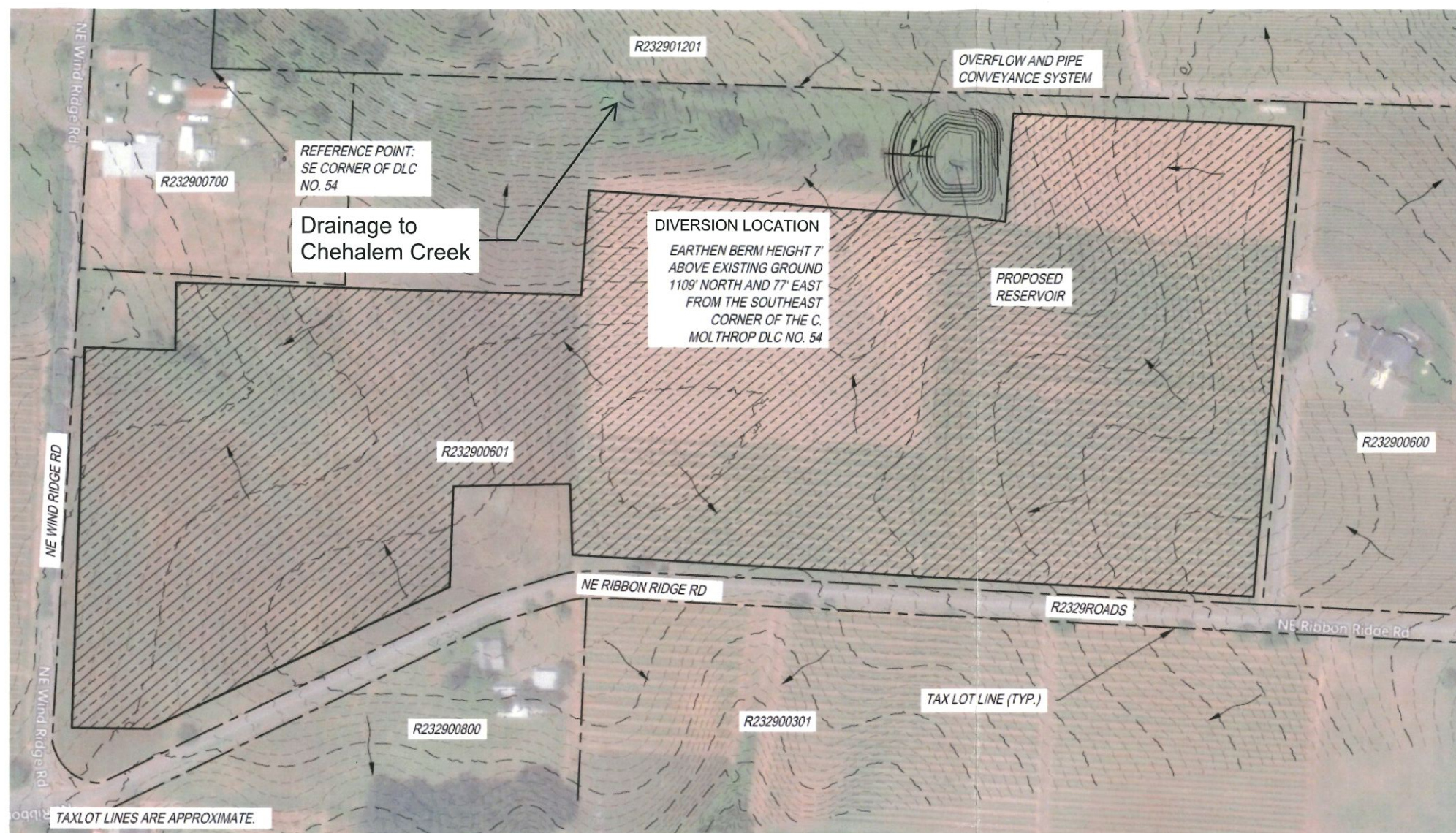
#	DATE	DESCRIPTION

REVISIONS

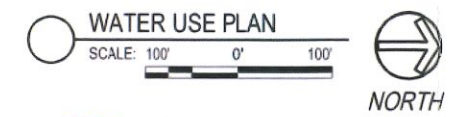
LCB KRN
 DRAWN BY CHECKED BY
 SURFACE WATER APPLICATION
 STATUS
 07/06/2020
 DATE
 18911
 PROJECT NUMBER

FIGURE 1
 © 2020 OTAK, INC

If this drawing is of 22" x 34", it has been reduced/enlarged. Scale accordingly.

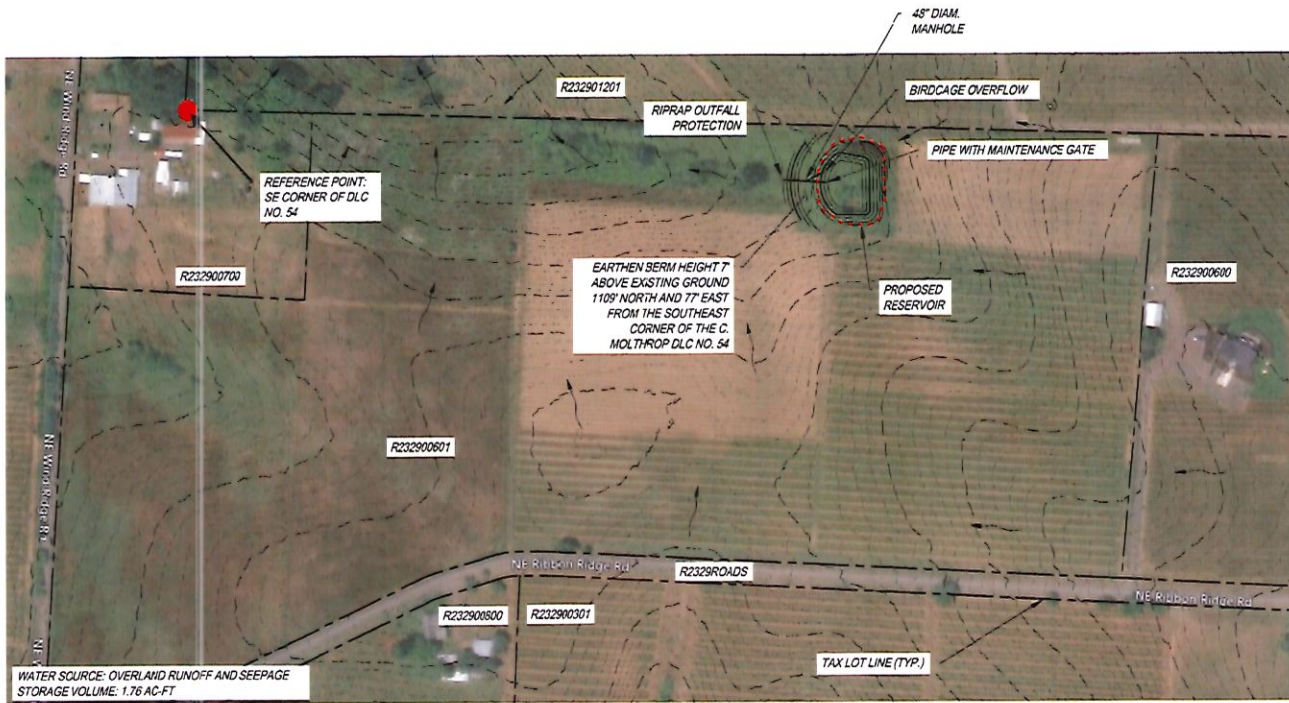


TAX LOT LINES ARE APPROXIMATE.

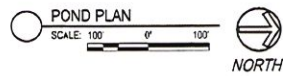


RECEIVED
FEB 08 2021
OWRD

P:\w07_2020_1\31\p L:\Project\18911\CADD\400\dwg\18911_SURFACE_WATER_FIGURE.dwg Layout Name: POND.PMP



TAX LOT LINES ARE APPROXIMATE.



IN GOVERNMENT LOT 4, SECTION 29, TOWNSHIP
2 SOUTH, RANGE 3 WEST, WILLAMETTE MERIDIAN,
1/4 1/4 NW 1/4 of the SE 1/4, Section 29
TAXLOT: R232900601

LEGEND

- EXISTING CONTOUR - 2' _____
- EXISTING CONTOUR - 10' - - - - -
- PROPOSED CONTOUR - 2' _____
- PROPOSED CONTOUR - 10' - - - - -
- FLOW ARROW _____

RECEIVED
FEB 08 2021
OWWRD

STAMP

CONSULTANT

RIDGECREST VINEYARDS
 PLAN VIEW
 WATER RIGHTS APPLICATION - YAMHILL COUNTY
 RESERVOIR RR-A

FILE

DATE DESCRIPTION

REVISIONS

REV. ASS.

DRAWN BY CHECKED BY

DATE

DATE

DATE

PROJECT NUMBER

FIGURE 1

© 2011 Otak, Inc.

If this drawing is not 27" x 36" it has been
 reproduced from a larger drawing.