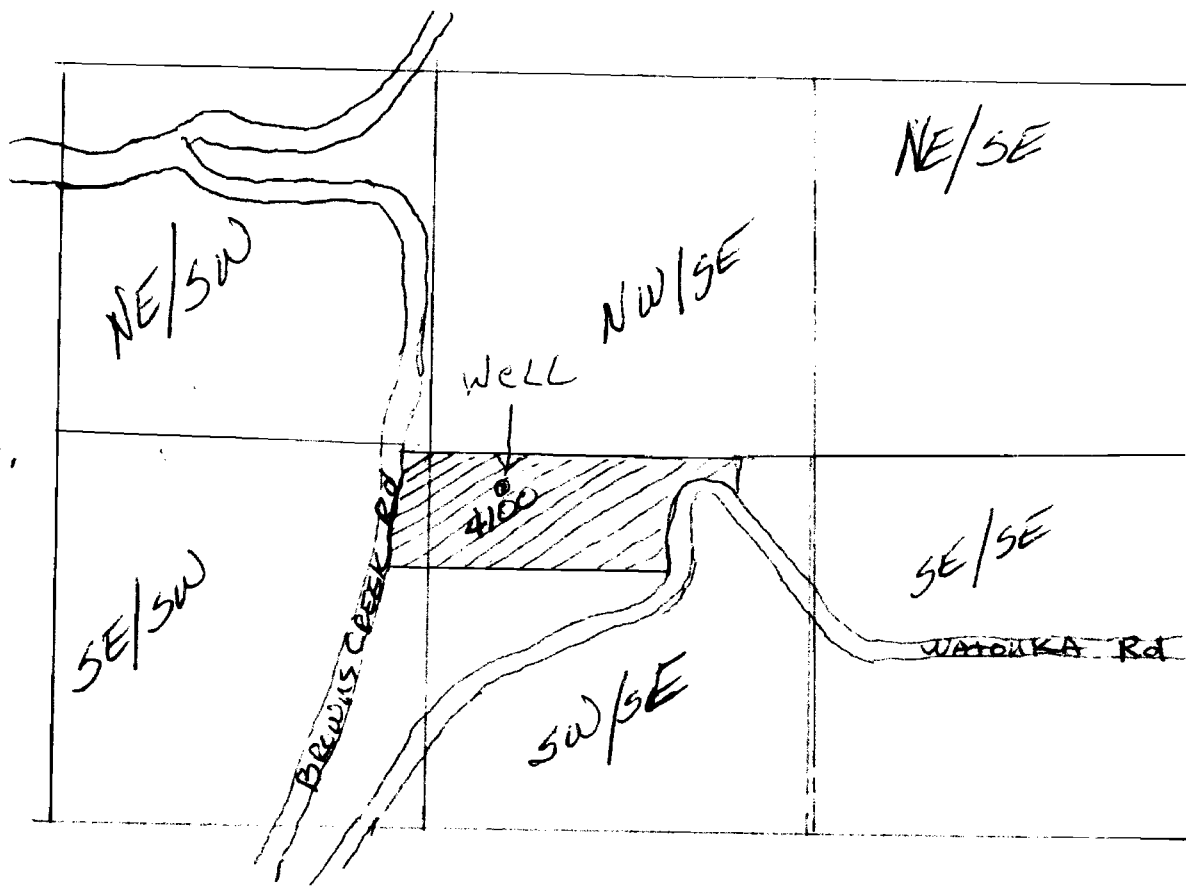


TAX LOT  
4100  
SHADED  
AREA

Well location  
2433 ft West  
of S.E. CORNER  
of Section 11  
1175 ft North  
of S.E. CORNER  
of Section 11

Wasco Co.

Hood Basin  
#4



1" = 660 ft.

8.5 acres  
SW/SE  
.9 acres  
SE/SW

2N 12 36

SCALE = 1" = 660' ON ENGINEER'S SCALE 10, unit = 66 ft

RECEIVED

JUN 01 2007

WATER RESOURCES DEPT  
SALEM, OREGON