

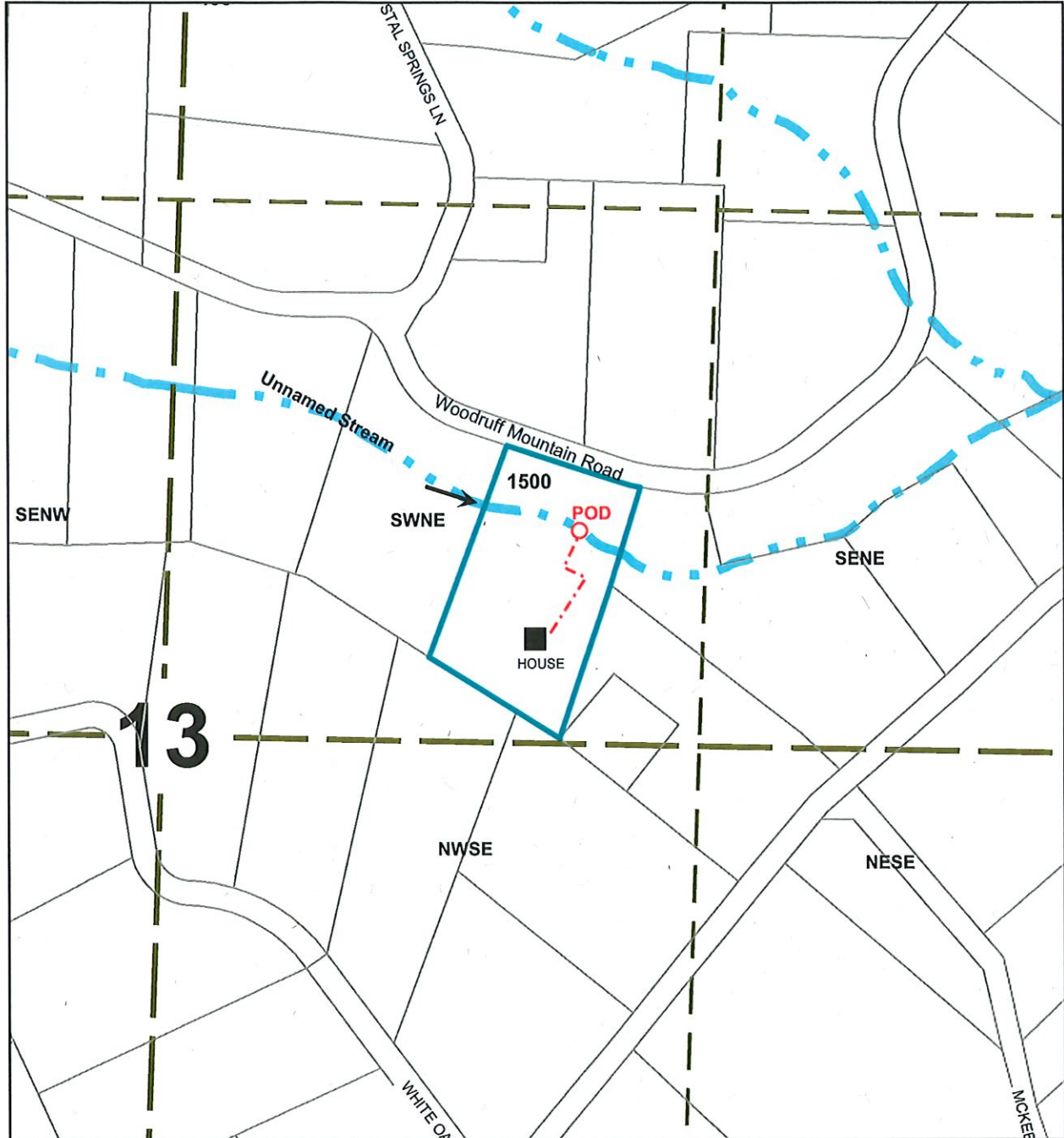


Surface Water Application
Culity
T.26S R.7W Section 13
Douglas County
Scale: 1"=400'

RECEIVED

FEB 16 2021

OWRD



Point of Diversion is 520 ft North and 1558 ft East
from the Center of Section 13

The purpose of this map is to identify
the location of a water right.
Not intended to show property ownership.

THIS MAP WAS PREPARED FOR ASSESSMENT PURPOSE ONLY.

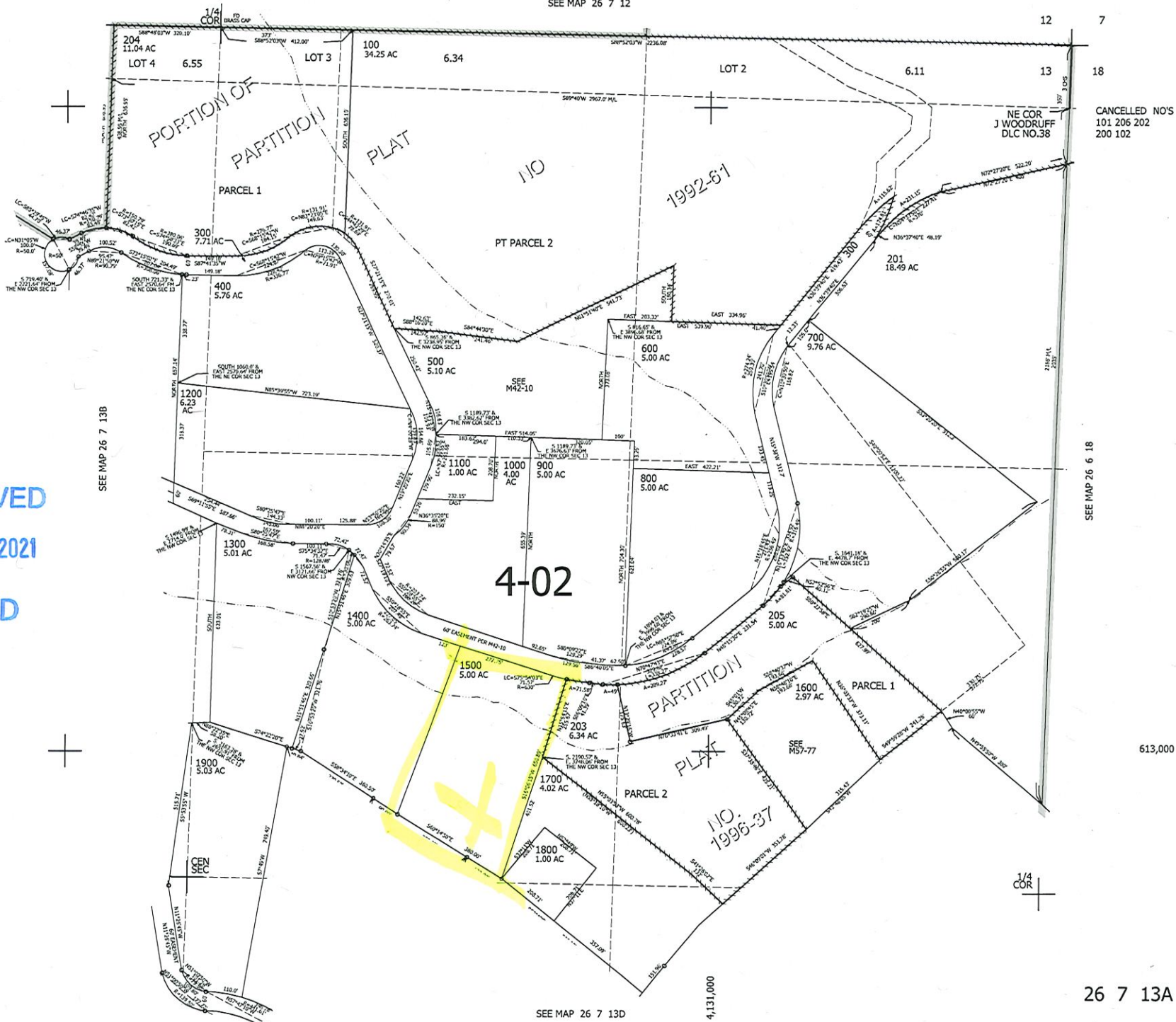
NE1/4 SEC.13 T.26S. R.7W. W.M.
DOUGLAS COUNTY

REVISED ON
12-12-13

26 7 13A

1" = 200'

SEE MAP 26 7 12



RECEIVED
FEB 16 2021
OWRD

CANCELLED NO'S
101 206 202
200 102

SEE MAP 26 6 18

613,000

26 7 13A

SEE MAP 26 7 13D

4,131,000